

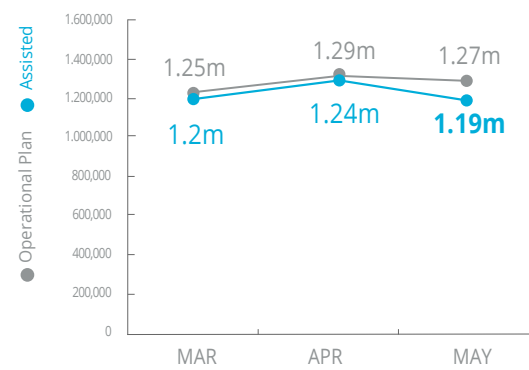


World Food Programme

Nigeria

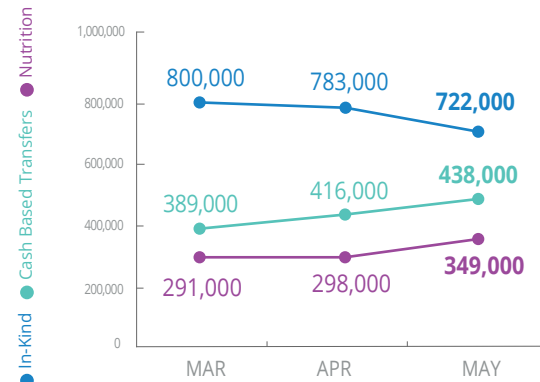
PEOPLE ASSISTED

Regional Emergency Operation 200777



OPERATIONAL PROFILE

by Activity



Note: Figures should not be added to avoid double-counting

FUNDING

Nigeria component of Regional Emergency Operation 200777

July – December 2018
Net funding requirement **USD56.7m**

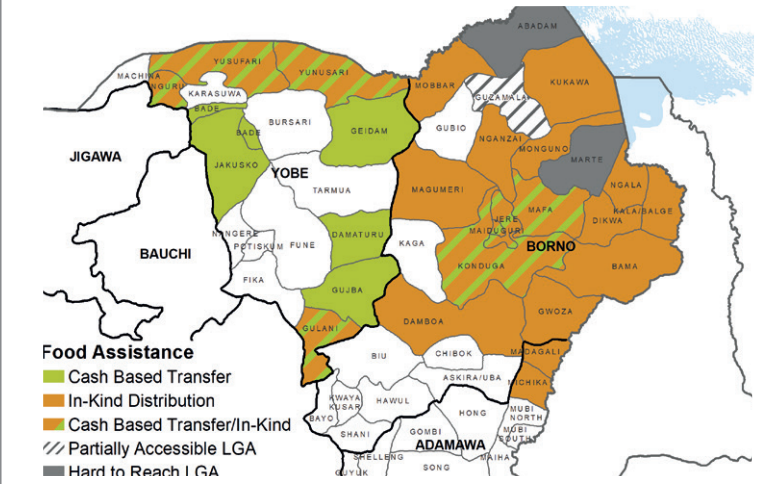
2018 LEVEL 3 RESPONSE
78% Received: USD125.2m
Requirement: USD161.5m

Regional Special Operation 200834
UN Humanitarian Air Services (UNHAS) Nigeria
52% Received: USD14.2m
2018 Requirement: USD27m

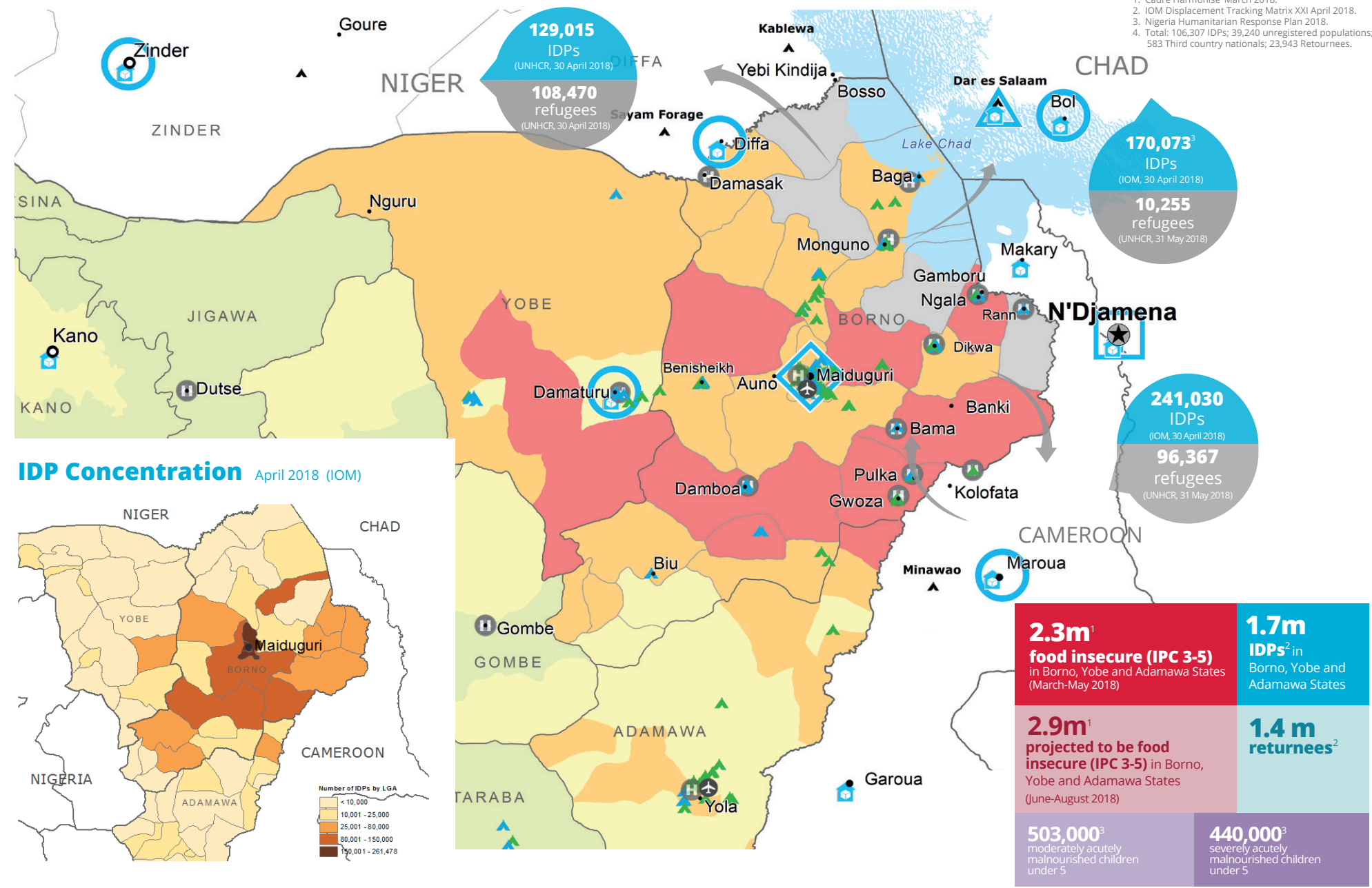
Special Operation 201032
Logistics and Emergency Telecommunications Sectors
15% Received: USD1.6m
2018 Requirement: USD10.6m

SOURCE: WFP, 21 JUNE 2018
SOURCE: WFP, 25 JUNE 2018

WFP OPERATIONAL PRESENCE AND FOOD ASSISTANCE MODALITIES

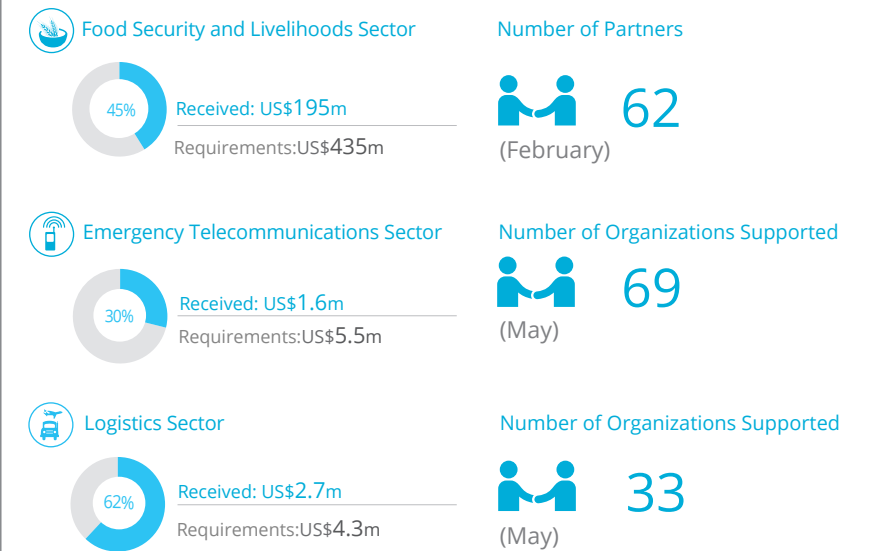


Source: WFP, 10 MAY 2018

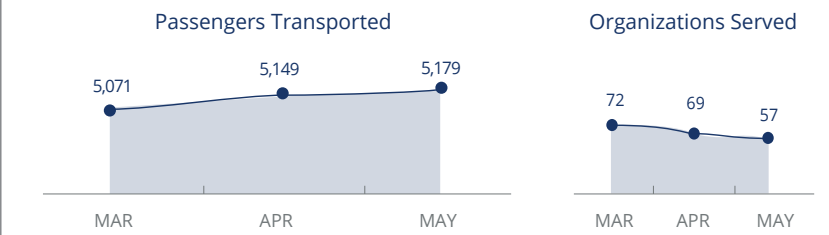


1. Cadre Harmonise' March 2018.
2. IOM Displacement Tracking Matrix XXI April 2018.
3. Nigeria Humanitarian Response Plan 2018.
4. Total: 106,307 IDPs; 39,240 unregistered populations; 583 Third country nationals; 23,943 Returnees.

WFP LED & SUPPORTED SECTORS



UN Humanitarian Air Service (UNHAS)



Sources: OCHA FTS, 25 June 2018; Clusters May 2018

WFP LEVEL 3 EMERGENCY
SINCE 11 AUGUST 2016

For more information, see the SITUATION REPORT and COUNTRY BRIEF
www.wfp.org/countries/nigeria

2A Regional Emergency Operation 200777
<http://documents.wfp.org/stellent/groups/public/documents/ep/WFP284303.pdf>

Produced by the WFP Operations Centre (OPSCEN) jointly with Country Office and Regional Bureau Dakar. This dashboard is based on best available information at the time of production. Future updates may vary as new information becomes available.

- CH Classification** (projected June-August 2018)
- No data
 - Minimal (Phase 1)
 - Stressed (Phase 2)
 - Crisis (Phase 3)
 - Emergency (Phase 4)
 - Famine (Phase 5)
- Operational Presence:**
- Country Office
 - Area Office
 - Sub Office
 - Field Office
 - Warehouse
- Refugee Camps:**
- Refugee Camp
 - IDP Camp
 - IDP Collective Center
 - UNHAS Connection
 - Ad-Hoc Rotary-Wing Destination
- Other:**
- National Capital
 - Major Town
 - Intermediate Town
 - International Boundary
 - Region Boundary

Sources: WFP, UNGIWG, GAUL, GLCSC, OCHA, UNHCR.

The designations employed and the presentation of material in the map(s) do not imply the expression of any opinion on the part of WFP concerning the legal or constitutional status of any country, territory, city or sea, or concerning the delimitation of its frontiers or boundaries. © World Food Programme 2018.