

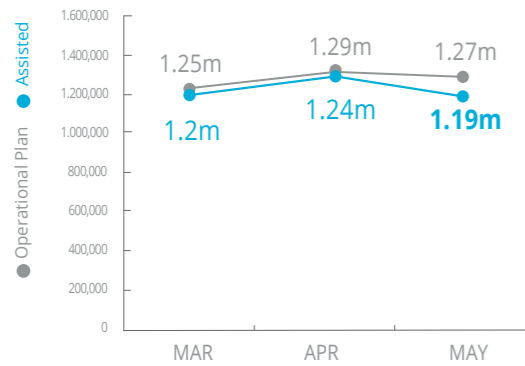


World Food Programme

# Nigeria

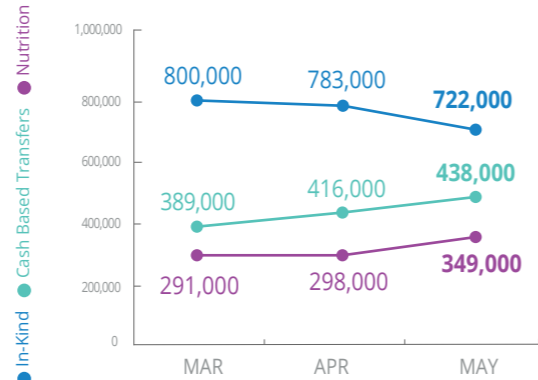
## PEOPLE ASSISTED

Regional Emergency Operation 200777



## OPERATIONAL PROFILE

by Activity



Note: Figures should not be added to avoid double-counting

## FUNDING

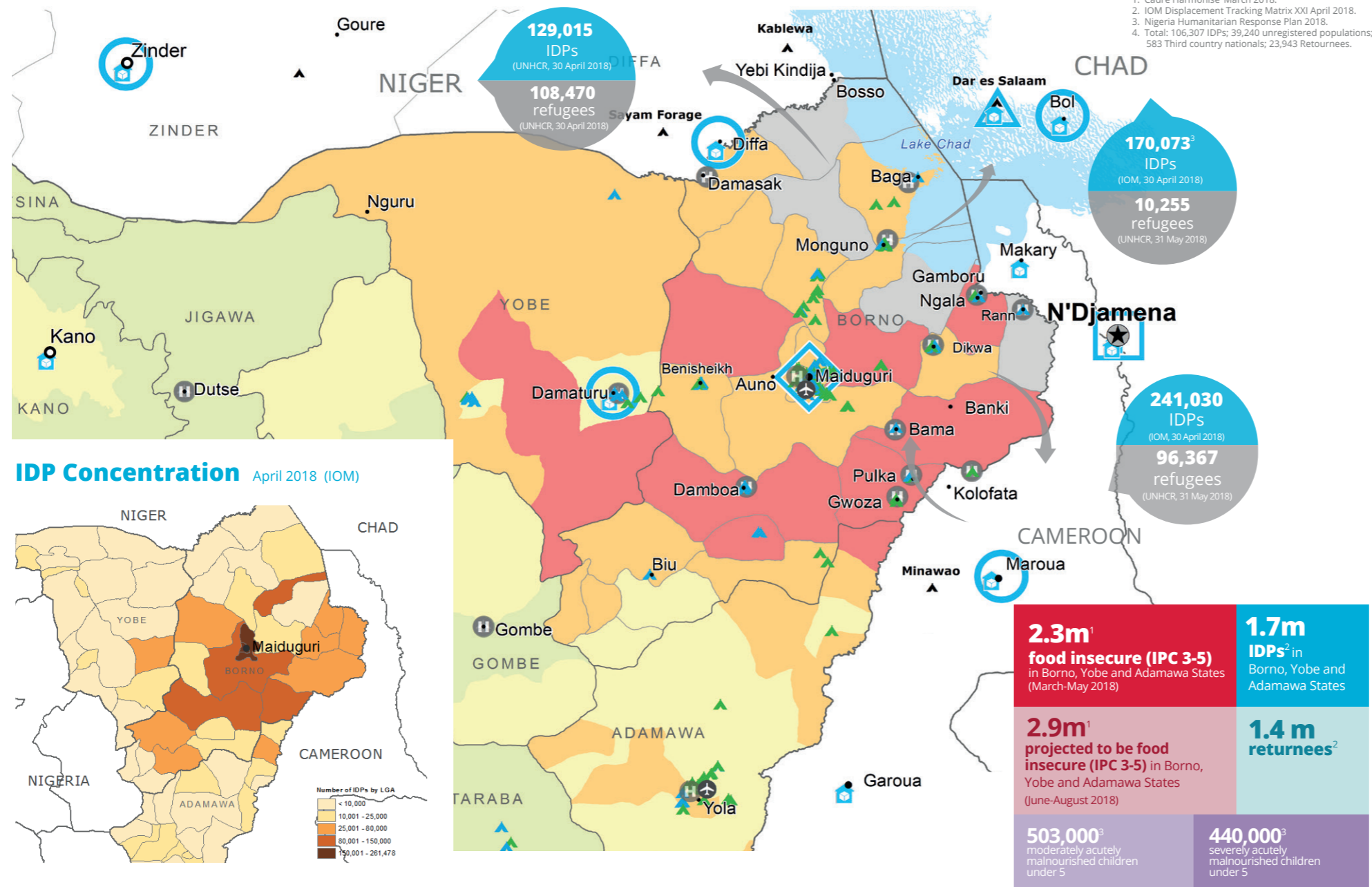
Nigeria component of Regional Emergency Operation 200777

July – December 2018  
Net funding requirement **USD56.7m**

**2018 LEVEL 3 RESPONSE**  
78% Received: USD125.2m  
Requirement: USD161.5m

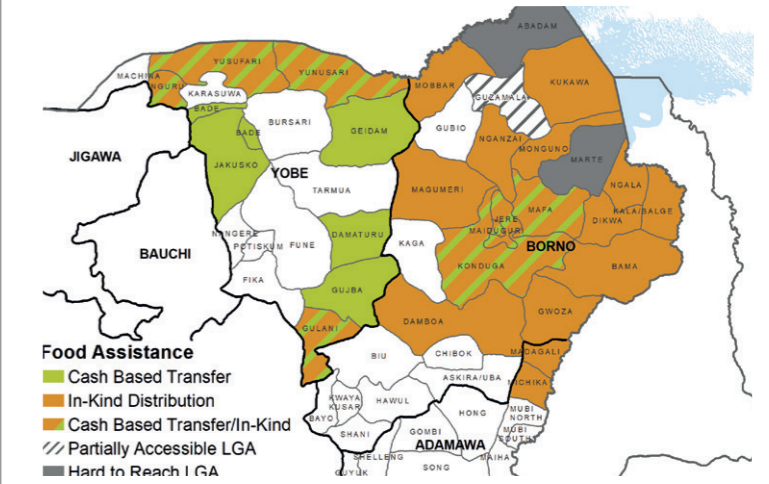
**Regional Special Operation 200834**  
UN Humanitarian Air Services (UNHAS) Nigeria  
52% Received: USD14.2m  
2018 Requirement: USD27m

**Special Operation 201032**  
Logistics and Emergency Telecommunications Sectors  
15% Received: USD1.6m  
2018 Requirement: USD10.6m

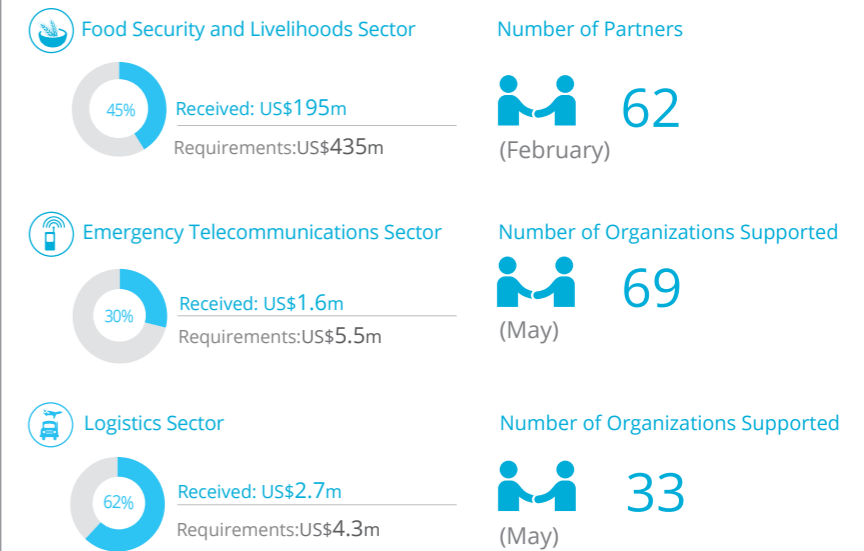


1. Cadre Harmonise' March 2018.  
 2. IOM Displacement Tracking Matrix XXI April 2018.  
 3. Nigeria Humanitarian Response Plan 2018.  
 4. Total: 106,307 IDPs; 39,240 unregistered populations; 583 Third country nationals; 23,943 Returnees.

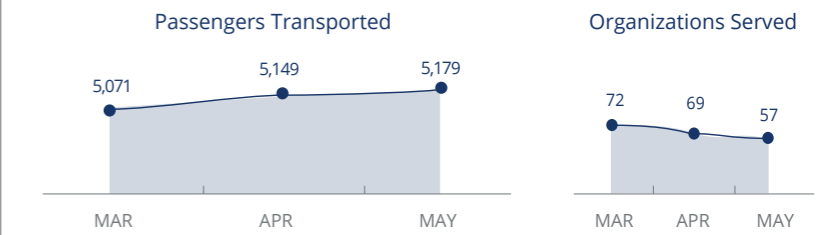
## WFP OPERATIONAL PRESENCE AND FOOD ASSISTANCE MODALITIES



## WFP LED & SUPPORTED SECTORS



## UN Humanitarian Air Service (UNHAS)



Sources: OCHA FTS, 25 June 2018; Clusters May 2018

## WFP LEVEL 3 EMERGENCY

SINCE 11 AUGUST 2016

For more information, see the SITUATION REPORT and COUNTRY BRIEF [www.wfp.org/countries/nigeria](http://www.wfp.org/countries/nigeria)

**2A Regional Emergency Operation 200777**  
<http://documents.wfp.org/stellent/groups/public/documents/ep/WFP284303.pdf>

Produced by the WFP Operations Centre (OPSCEN) jointly with Country Office and Regional Bureau Dakar. This dashboard is based on best available information at the time of production. Future updates may vary as new information becomes available.

**CH Classification**  
(projected June-August 2018)

- No data
- Minimal (Phase 1)
- Stressed (Phase 2)
- Crisis (Phase 3)
- Emergency (Phase 4)
- Famine (Phase 5)

- Country Office
- Area Office
- Sub Office
- Field Office
- Warehouse
- Refugee Camp
- IDP Camp
- IDP Collective Center
- UNHAS Connection
- Ad-Hoc Rotary-Wing Destination
- National Capital
- Major Town
- Intermediate Town
- International Boundary
- Region Boundary

Sources: WFP, UNGIWG, GAUL, GLCSC, OCHA, UNHCR.

The designations employed and the presentation of material in the map(s) do not imply the expression of any opinion on the part of WFP concerning the legal or constitutional status of any country, territory, city or sea, or concerning the delimitation of its frontiers or boundaries. © World Food Programme 2018.