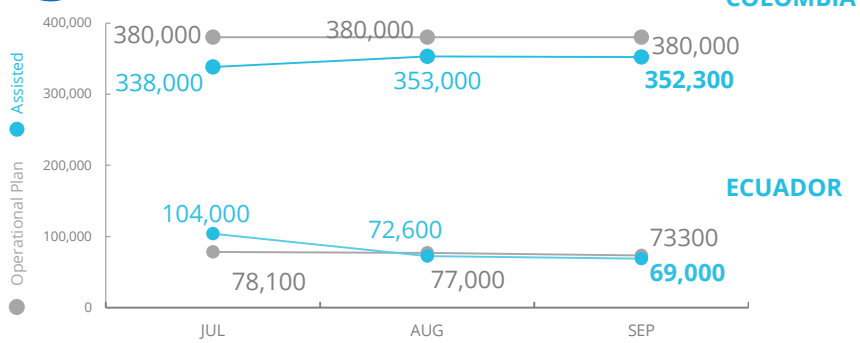


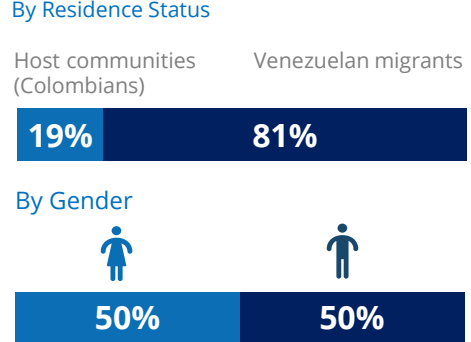
Colombia - Venezuela Border Crisis



PEOPLE ASSISTED BY WFP



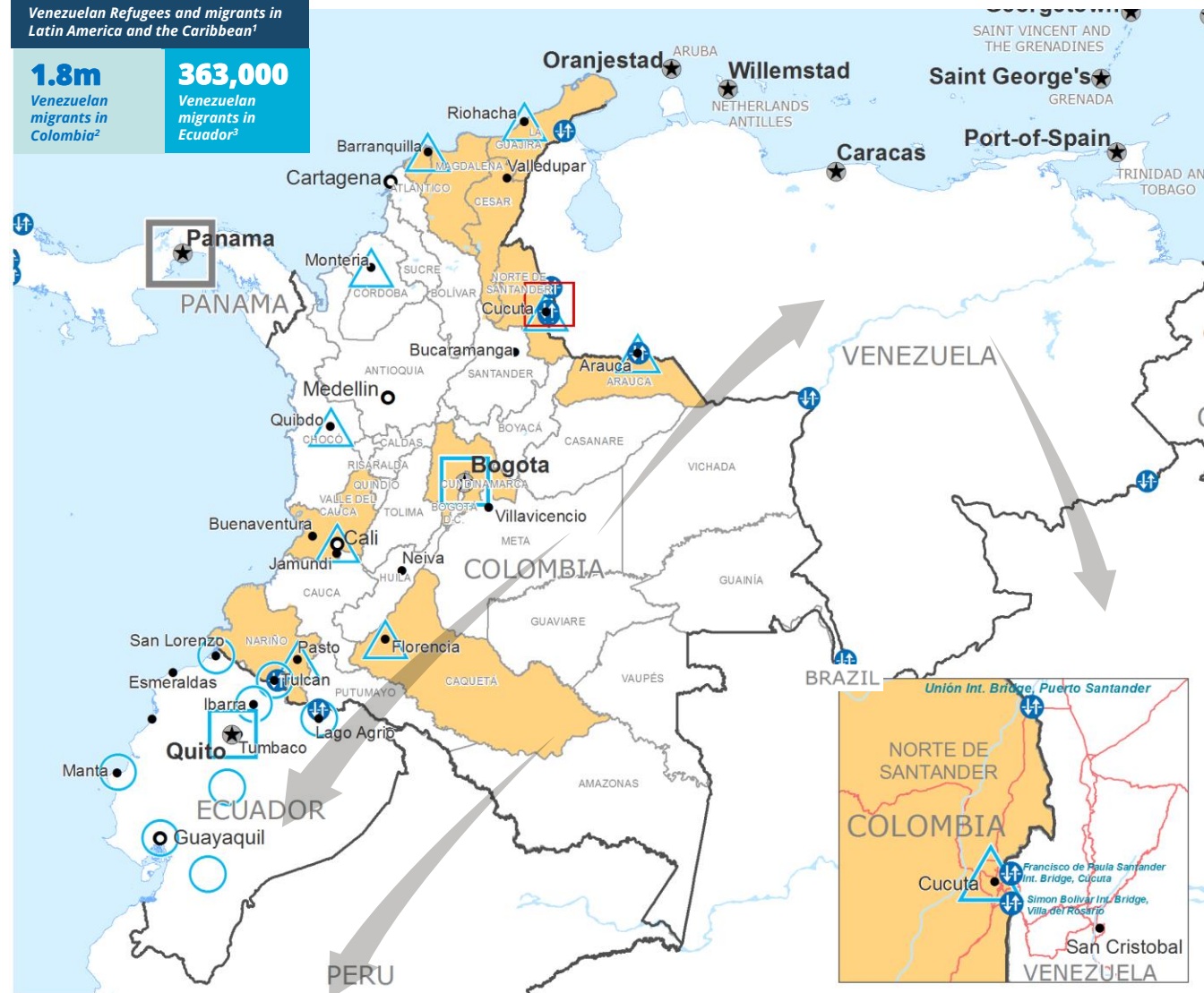
WFP Colombia



3.7m
Venezuelan Refugees and migrants in Latin America and the Caribbean¹

1.8m
Venezuelan migrants in Colombia²

363,000
Venezuelan migrants in Ecuador³



 Country Office
 ★ National Capital
 Border Crossing Point
 — International Boundary
 Department Boundary
 Sub Office
● Major Town
 WFP Operational Presence for L2 Response
 Field Office
● Intermediate Town

Sources: WFP, UNGIWG, GAUL, GLCSC, OCHA, UNHCR.

¹Refugee and Migrant Response Plan 2020 (RMRP 2020)

²Colombia Migration Authority, May 2020

³Government, June 2020

The designations employed and the presentation of material in the map(s) do not imply the expression of any opinion on the part of WFP the delimitation of its frontiers or boundaries.

© World Food Programme 2020.



FUNDING

Net Funding Requirements (US\$)

November 2020 – April 2021

WFP Colombia: L2
Emergency Response

76.2m

WFP Ecuador: Regional
Migrant Response

5m

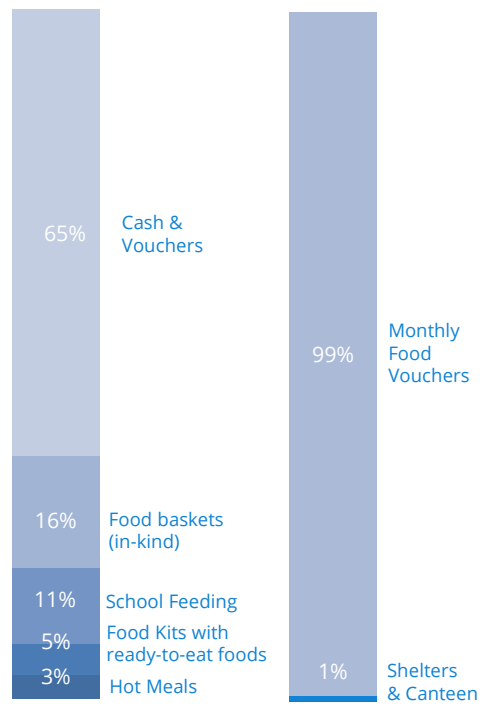


OPERATIONAL PROFILE

People reached
August 2020

WFP Colombia

WFP Ecuador



SOURCE: WFP, 05 NOV 2020



COVID-19 Operational Impact

- Status: WFP Response
- Colombia**
- ✔ School feeding: Adaptation to take-home rations
 - ✔ Food baskets (in-kind): Significant scale-up ongoing in remote areas
 - ✔ Cash & Vouchers: Expansion of CBT is ongoing as a safer delivery modality
 - ✔ Shock-responsive social protection (SRSP) pilot to support migrants and Colombians in extreme poverty
 - ! Hot meals: Most community kitchens are temporarily closed, smaller ones and those operating in shelters continue functioning
 - ✔ Relief support to Venezuelan returnees through food kits
 - ✔ Emergency relief support in the Colombian Amazon region, including for indigenous populations.
 - ✔ Expansion to urban areas, including cash assistance in Bogotá.
- Ecuador**
- ✔ Monthly Food Vouchers: The exceptional assistance provided to the most vulnerable households has come to an end, and normal targeting process resumed. Beneficiaries are still selected and assisted by phone.
 - ✘ Kits & Vouchers at borders: Suspended due to borders closure
 - ! Shelters & Canteens: 20 out of 24 shelters and canteens assisted vulnerable population. WFP supplies hygiene kits.
- ✔ New
 ✔ Ongoing
 ! Partially Suspended
 ✘ Suspended

WFP LEVEL 2 EMERGENCY SINCE 30 MARCH 2018

SITUATION REPORT and COUNTRY BRIEFS

