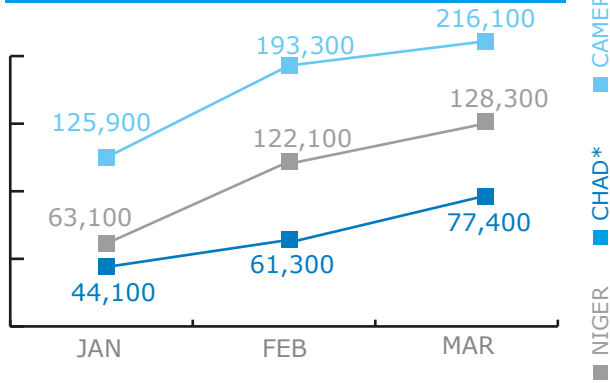


BENEFICIARIES

Reg. Emergency Operation 200777



Total people assisted in Cameroon, Chad and Niger in March: 421,800



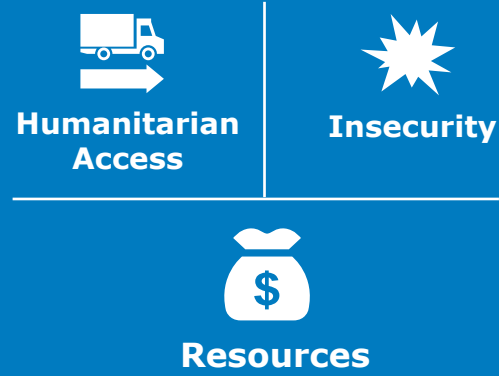
*Chad also assists vulnerable people in the Lake basin under PRRO 200713.

(MAR) ACTIVITIES

Reg. Emergency Operation 200777



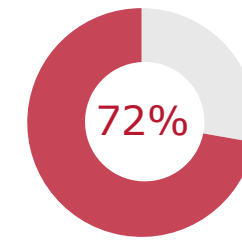
OPERATIONAL CHALLENGES



FUNDING



NET FUNDING REQUIREMENTS



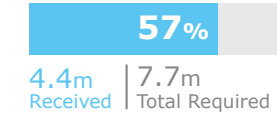
Regional Emergency Operation 200777
 June - November 2016
 Net Funding Requirements: **81.1m**
 Total Requirements: **113m**

Source: WFP, 25 May 2016

PROJECT FUNDING STATUS

Special Operation 200834 (UNHAS NIGERIA)

May 2015 - June 2016



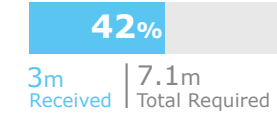
Special Operation 200792* (UNHAS NIGER)

Jan 2015 - Dec 2016



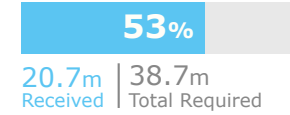
Special Operation 200895* (UNHAS CAMEROON)

Aug 2015 - Dec 2016



Special Operation 200785* (UNHAS CHAD)

Jan 2015 - Dec 2016



*Covers operations in the whole country, not only in areas affected by insecurity around Lake Chad.

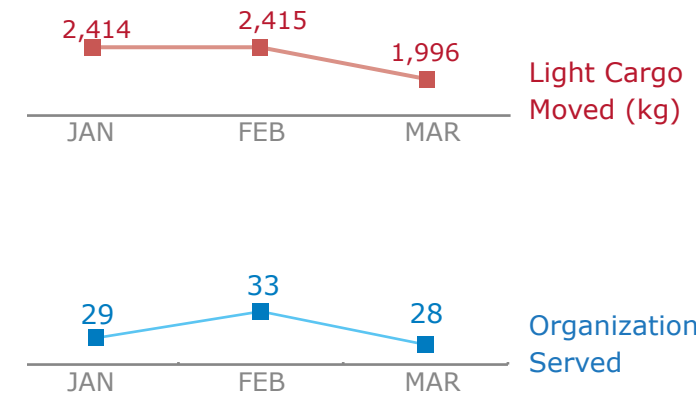
Source: WFP, 23 May 2016

COMMON SERVICES



UN Humanitarian Air Service (Nigeria)

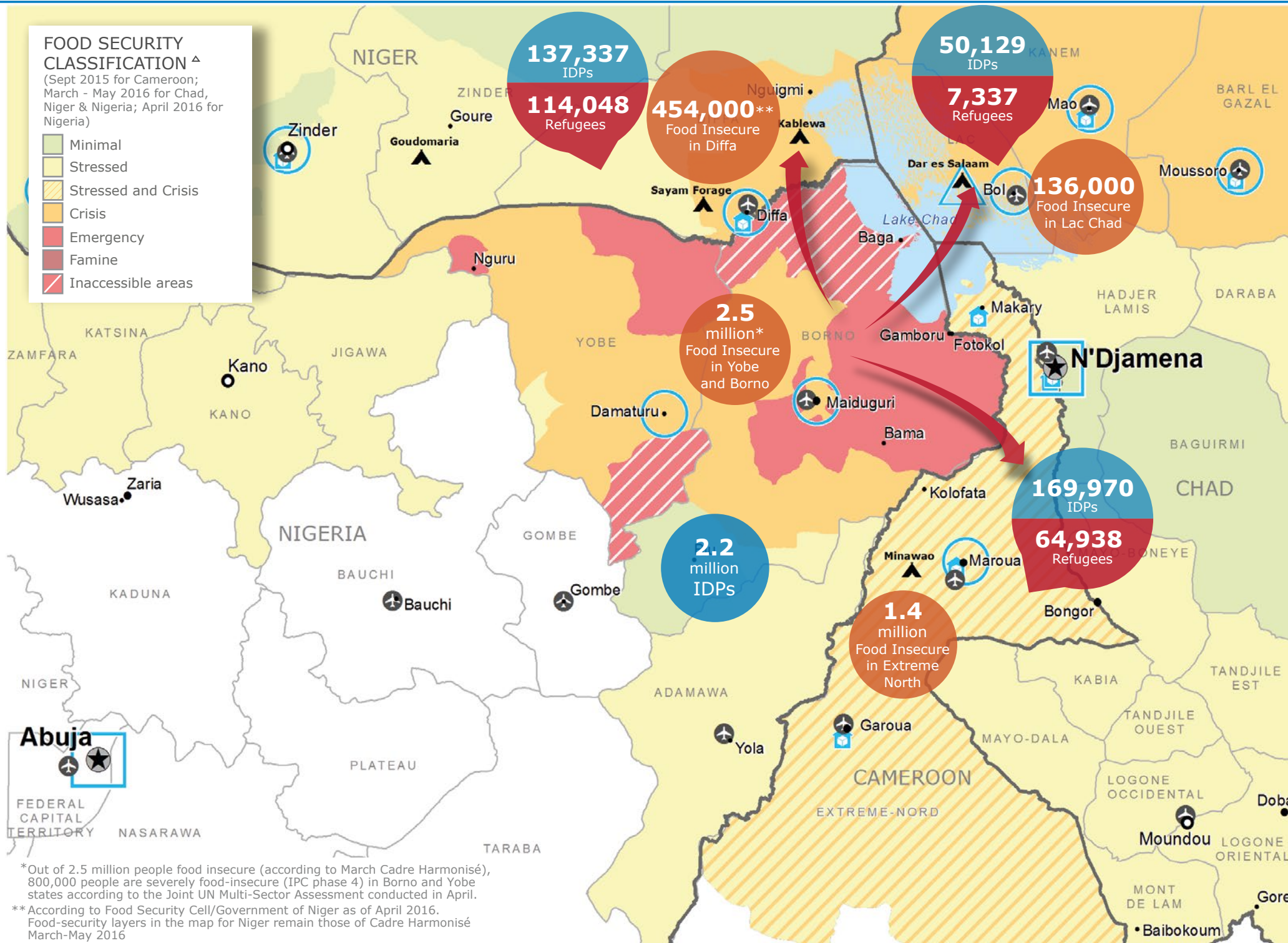
Source: WFP, 11 April 2016



Check the **COUNTRY BRIEF** and **SITUATION REPORT**
<http://www.wfp.org/countries/CAMEROON>
<http://www.wfp.org/countries/CHAD>
<http://www.wfp.org/countries/NIGER>

Produced by the WFP **Operations Centre (OPSCEN)**

This dashboard is based on best available information at the time of production. Future updates may vary as new information becomes available.



*Out of 2.5 million people food insecure (according to March Cadre Harmonisé), 800,000 people are severely food-insecure (IPC phase 4) in Borno and Yobe states according to the Joint UN Multi-Sector Assessment conducted in April.
 ** According to Food Security Cell/Government of Niger as of April 2016. Food-security layers in the map for Niger remain those of Cadre Harmonisé March-May 2016

- Country Office
- Refugee Camp
- National Capital
- International Boundary
- Sub Office
- Warehouse
- Major Town
- Region Boundary
- Field Office
- UNHAS Connection
- Intermediate Town
- Small Town

▲ Cadre Harmonisé March 2016 for Chad, Niger and Nigeria; EFSA Sept 2015 for Cameroon. Joint UN Multi-Sector Assessment April 2016 for Nigeria

Sources: WFP, UNGIWI, GAUL, GLCSC, UNHCR, IOM. The designations employed and the presentation of material in the map(s) do not imply the expression of any opinion on the part of WFP concerning the legal or constitutional status of any country, territory, city or sea, or concerning the delimitation of its frontiers or boundaries. © World Food Programme 2016