



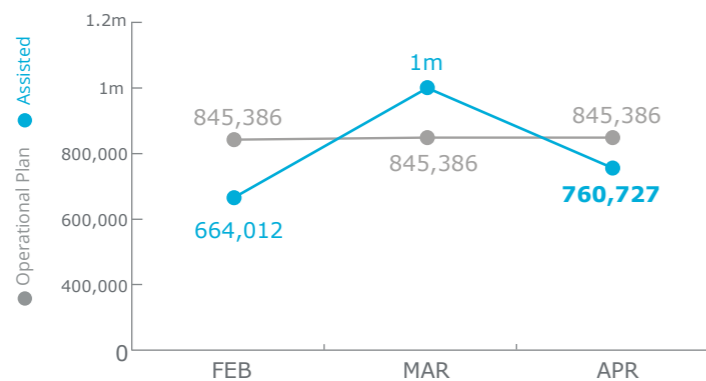
World Food Programme

# Iraq



## PEOPLE ASSISTED

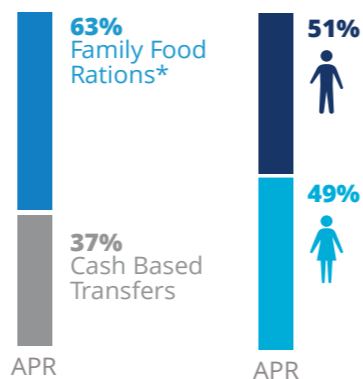
Transitional Interim Country Strategic Plan



SOURCE: WFP, 24 MAY 2018



## OPERATIONAL PROFILE



\*Displaced people reached with Immediate Response Rations are counted separately and are not included in the total monthly beneficiaries to avoid double counting, as they move on to receive Family Food Rations.



## FUNDING

Iraq Transitional Interim Country Strategic Plan (Jan-Dec 2018)

June - November 2018

# US\$ 37m

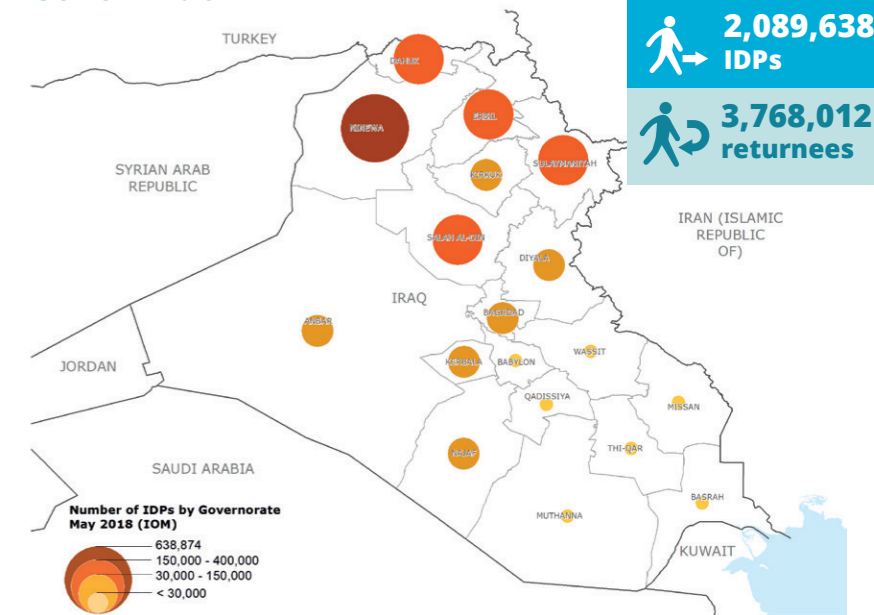
Net funding requirement\*

\* Does not include Strategic Outcome 5 of the T-ICSP (Provision of cluster services and common platforms)

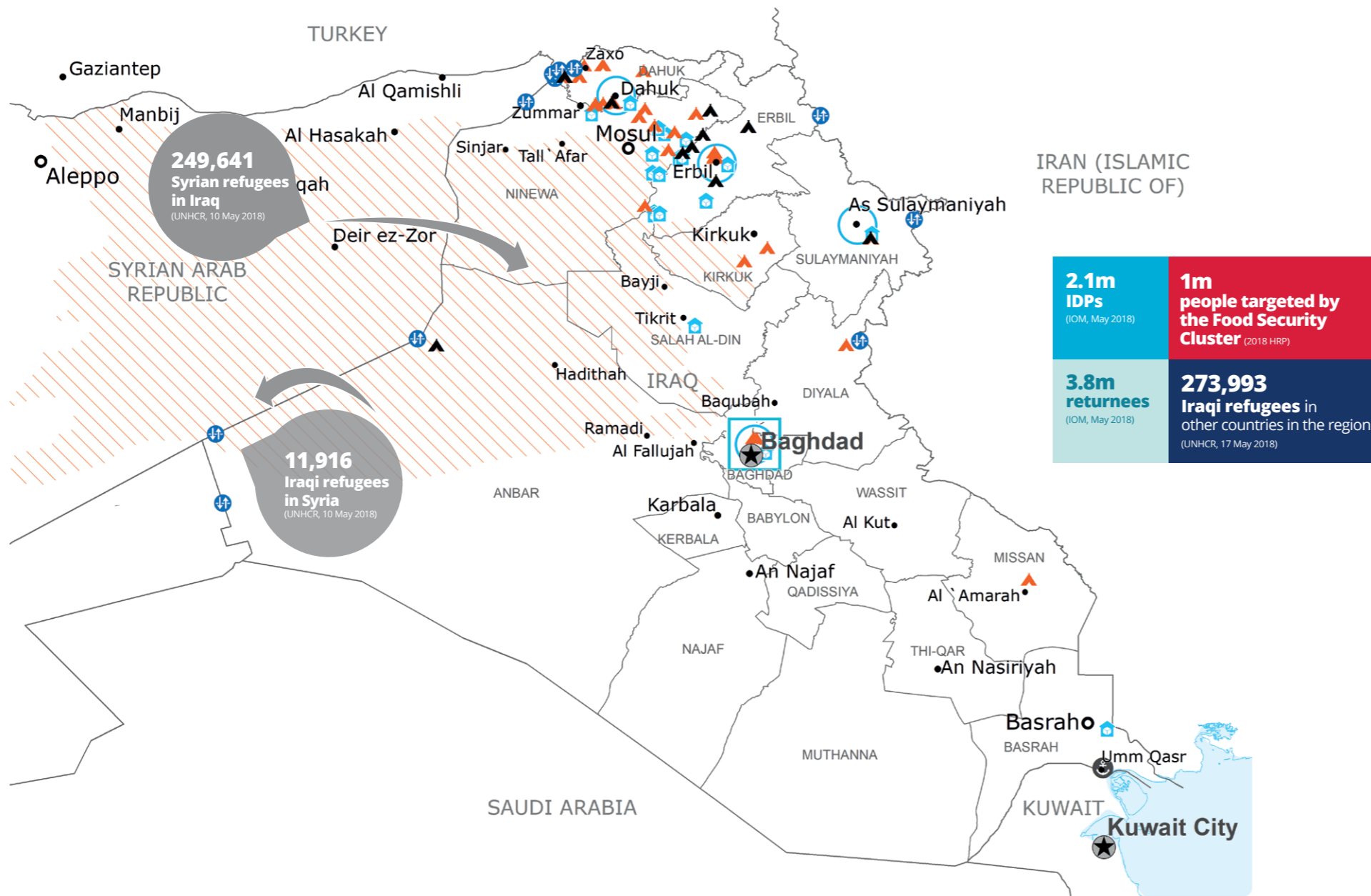
SOURCE: WFP, 24 MAY 2018

## IDPs BY LOCATION

AS OF 15 MAY 2018



SOURCE: IOM DTM ROUND 95, MAY 2018

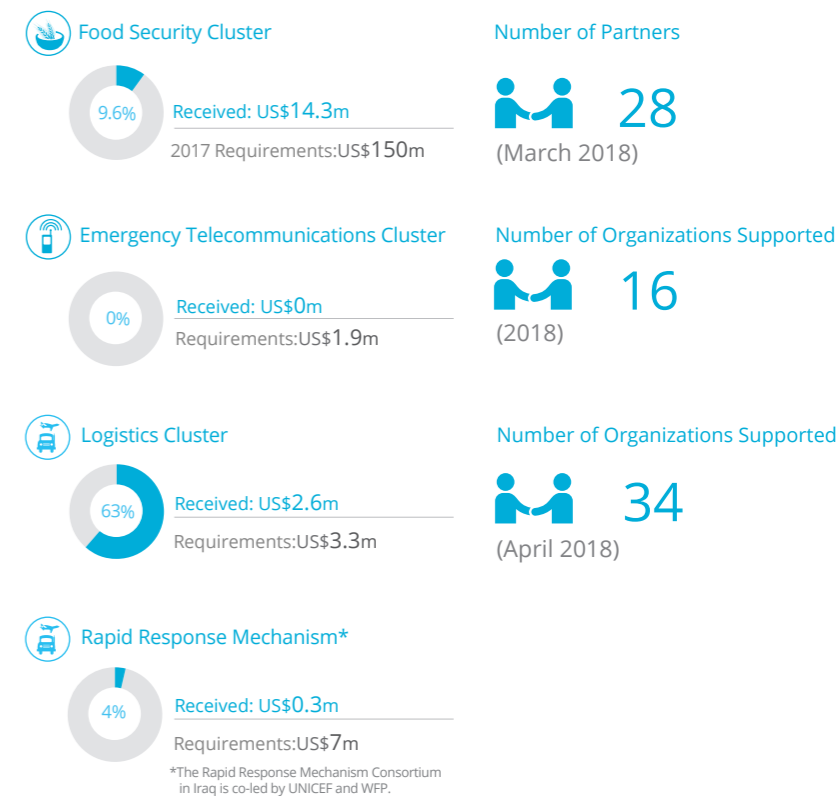


- Country Office
- Sub Office
- Logistics Hub Planned
- Warehouse
- Border Crossing Point
- Road Supply Route
- Waterway Supply Route
- UNHAS Route
- IDP Camp
- Refugee Camp
- National Capital
- Major Town
- Intermediate Town
- Small Town
- International Boundary
- Province Boundary
- Restricted Access Area

Sources: WFP, UNGIWG, GAUL, GLCSC, OCHA, UNHCR, IOM, INSO.

The designations employed and the presentation of material in the map(s) do not imply the expression of any opinion on the part of WFP concerning the legal or constitutional status of any country, territory, city or sea, or concerning the delimitation of its frontiers or boundaries. © World Food Programme 2018.

## WFP LED & CO-LED CLUSTERS



SOURCE: OCHA FTS, 28 MAY 2018; CLUSTERS, 18 MAY 2018

## WFP LEVEL 2 EMERGENCY

SINCE 30 NOVEMBER 2017 (LEVEL 3 EMERGENCY SINCE JUNE 2014)

For more information, see the SITUATION REPORT and COUNTRY BRIEF [www.wfp.org/countries/iraq](http://www.wfp.org/countries/iraq)

1 Iraq Transitional Interim Country Strategic Plan

Produced by the WFP Operations Centre (OPSCEN) jointly with Country Office and Regional Bureau Cairo. This dashboard is based on best available information at the time of production. Future updates may vary as new information becomes available.