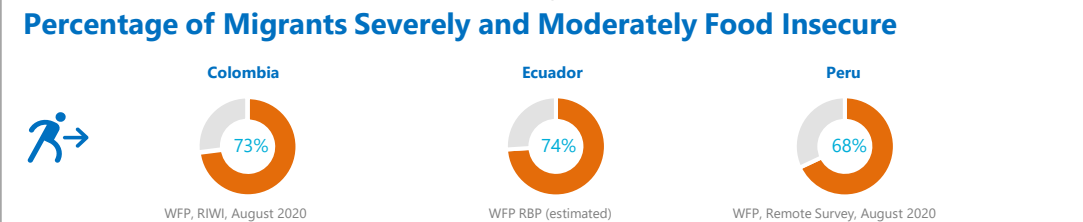
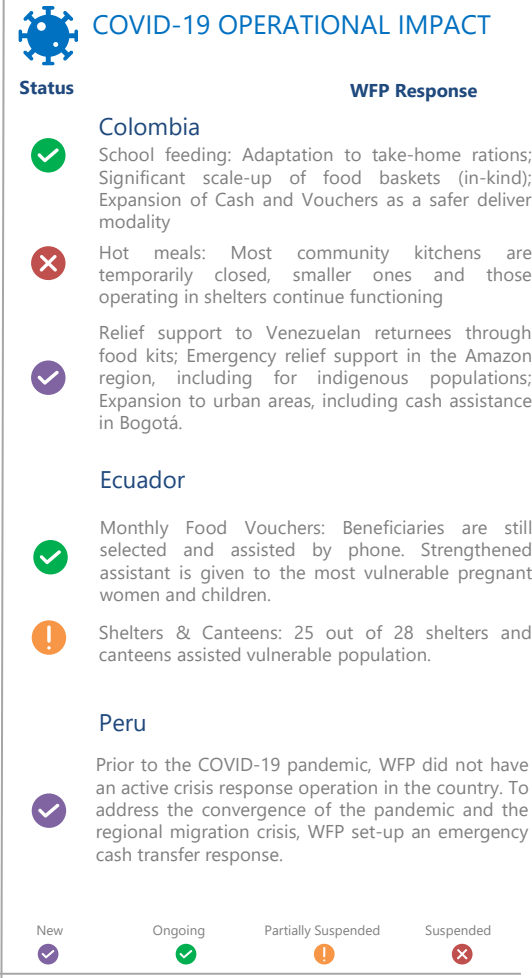
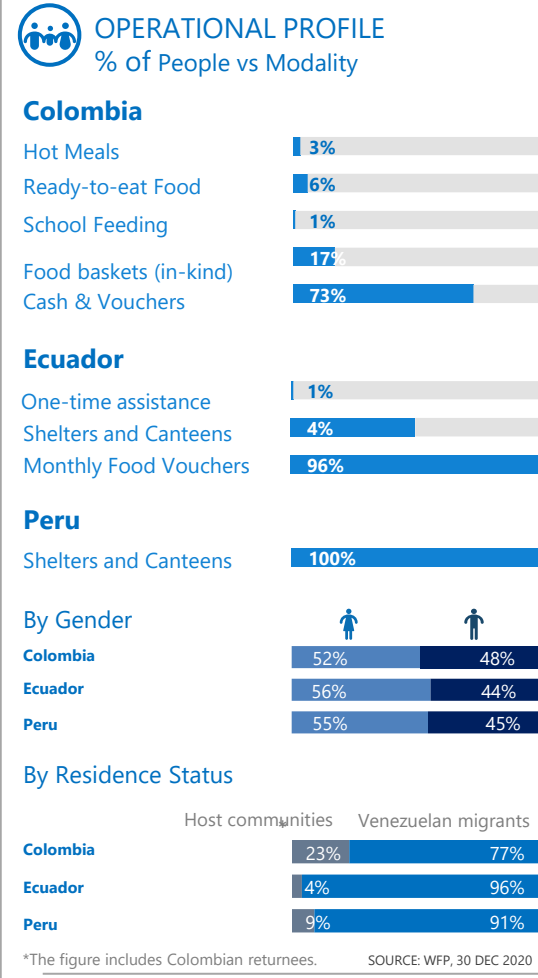
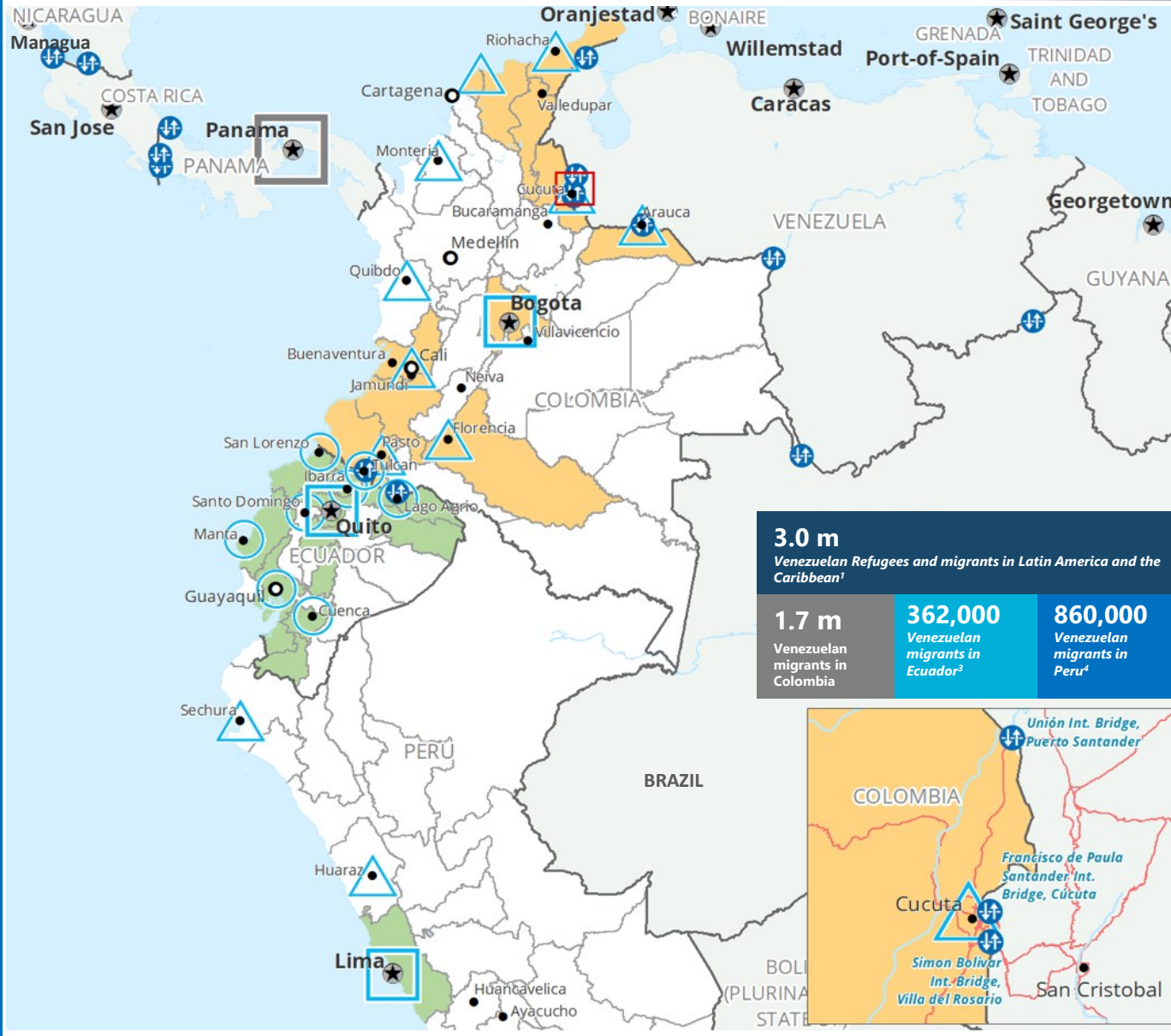
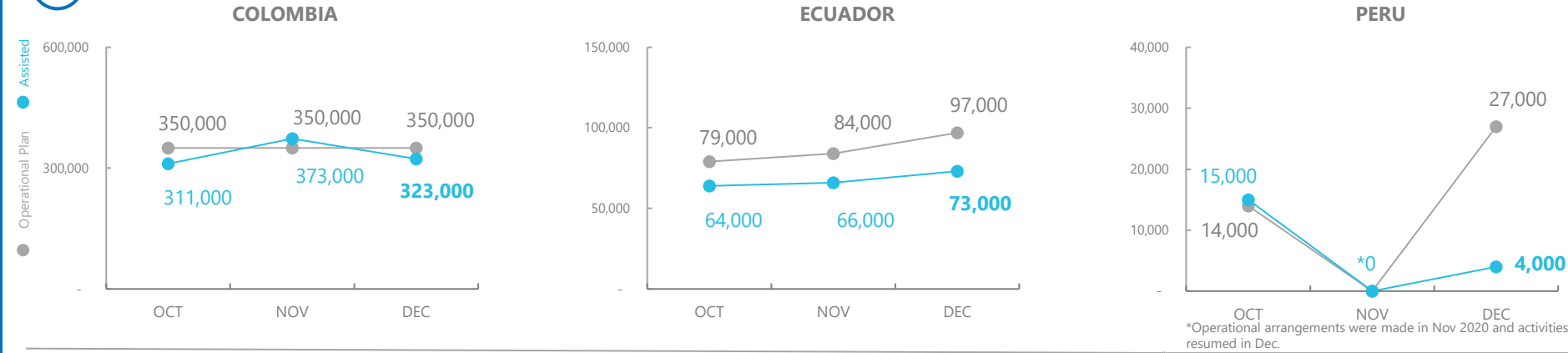


Sub-regional migrant crisis – Colombia, Ecuador, Peru

PEOPLE ASSISTED BY WFP



□ Regional Bureau ★ National Capital + Border Crossing Point — International boundaries
□ Country Office ● Major Town ■ WFP Operational Presence for L2 Response — Department boundaries
○ Sub Office • Intermediate Town ■ WFP Operational Presence related to the migrants crisis
△ Field Office

¹Refugee and Migrant Response Plan 2020 (RMRP 2020)
²Migración Colombia, February 2020
³Government, December 2020
⁴National Superintendence of Migrations October 2020

WFP LEVEL 2 EMERGENCY SINCE 30 MARCH 2018. L2 EXTENDED AND EXPANDED TO ECUADOR AND PERU ON 30 DECEMBER 2020.