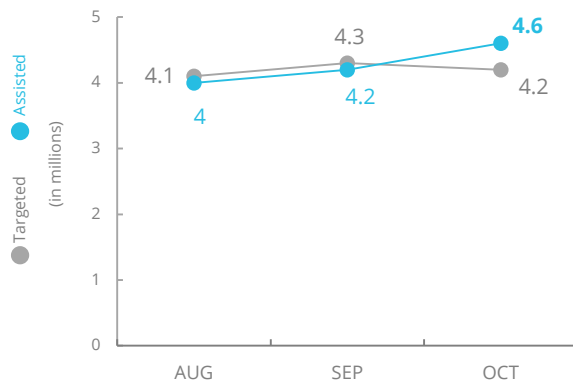
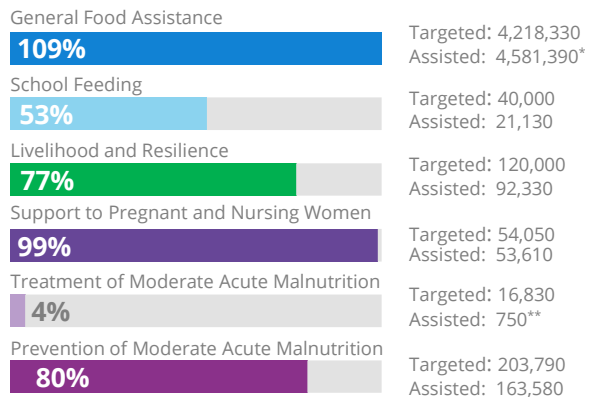


Syria

PEOPLE ASSISTED General Food Assistance (GFA)



OPERATIONAL PROFILE By Activity (October)



* Beneficiary reach above plan primarily due to the north-eastern Syria emergency response
** October dispatches low as stocks for distributions were provided over previous months

FUNDING Syria Interim Country Strategic Plan (ICSP)

December 2019 – May 2020

us\$149m

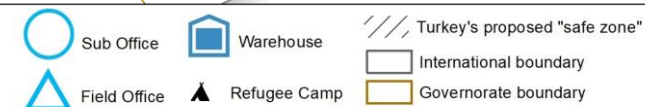
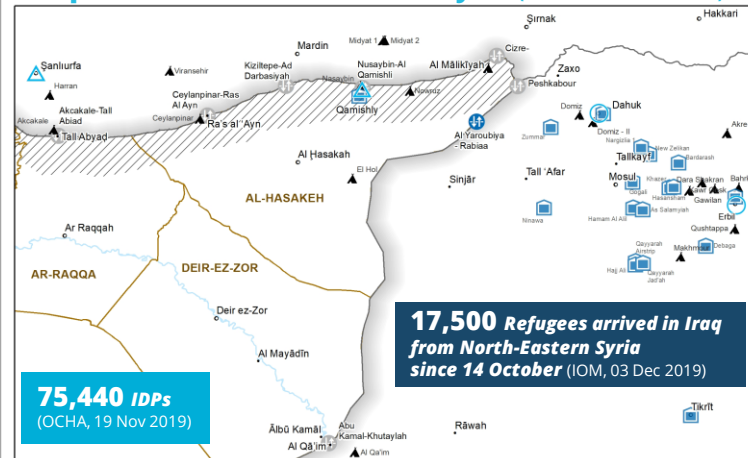
Net funding requirements

2019 LEVEL 3 RESPONSE
Requirements: US\$737.8m
Funded: US\$621.8m

84%

SOURCE: WFP, 01 DEC 2019

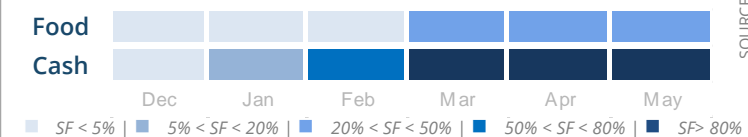
Displacements North-Eastern Syria (14 Oct – 02 Dec)



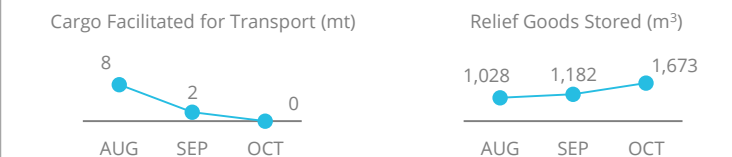
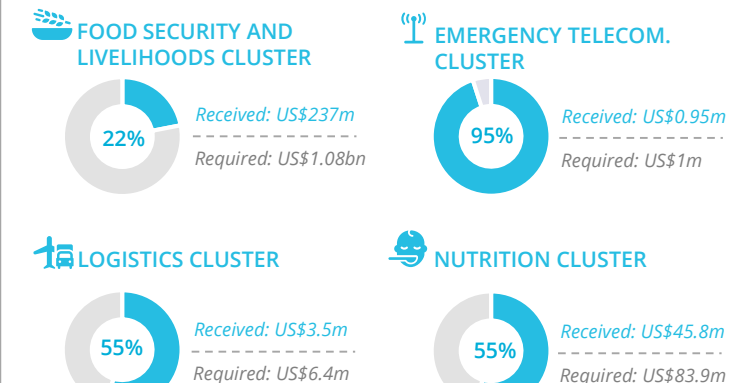
AVERAGE MONTHLY FUNDING REQUIREMENTS

Food: US\$46.3m **Cash: US\$5.9m**

EXPECTED SHORTFALLS



WFP-LED AND SUPPORTED CLUSTERS

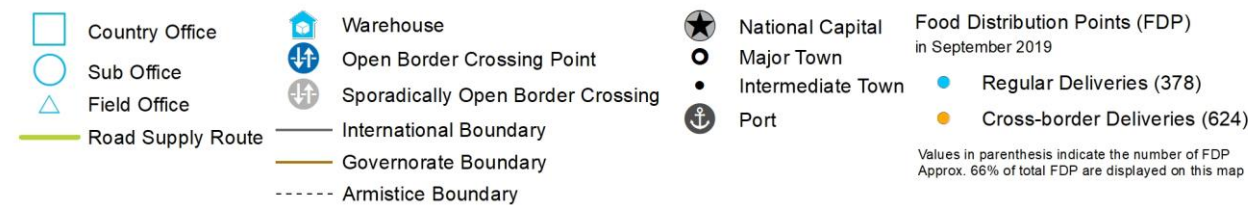
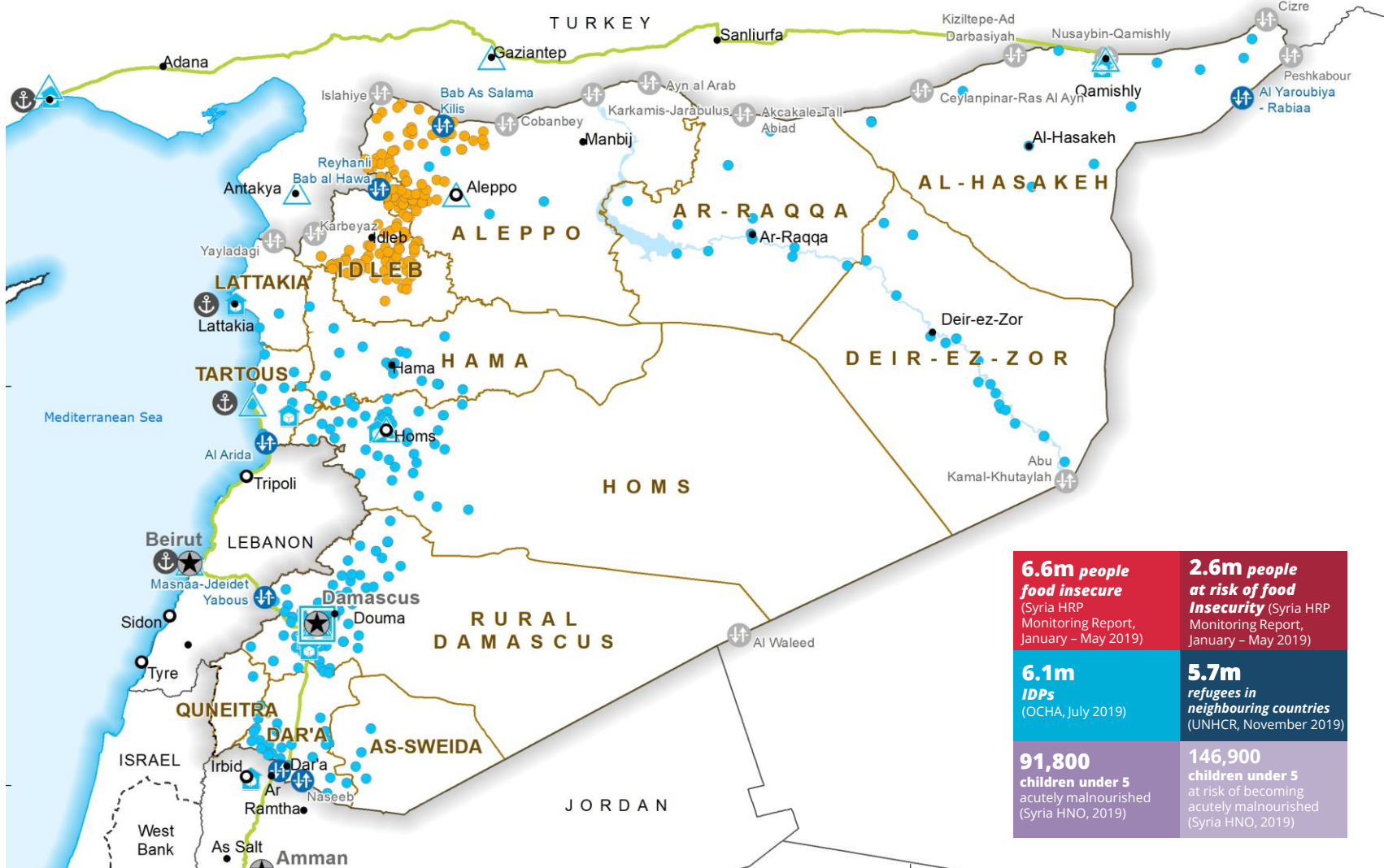


WFP LEVEL 3 EMERGENCY SINCE 14 DECEMBER 2012

For more information, see the [SITUATION REPORT](https://www1.wfp.org/countries/syrian-arab-republic) and [COUNTRY BRIEF](https://www1.wfp.org/countries/syrian-arab-republic)

Syria Interim Country Strategic Plan
<https://www1.wfp.org/operations/5y02-syrian-arab-republic-interim-country-strategic-plan-2019-2020>

Produced by the WFP Operations Centre (OPSCEN) jointly with Country Office and Regional Bureau Cairo. This dashboard is based on best available information at the time of production. Future updates may vary as new information becomes available.



Sources: WFP, UNGIWG, GeoNames, GAUL, GLCSC, OCHA, UNHCR

The designations employed and the presentation of material in the map(s) do not imply the expression of any opinion on the part of WFP concerning the legal or constitutional status of any country, territory, city or sea, or concerning the delimitation of its frontiers or boundaries.

© World Food Programme 2019.

SOURCE: WFP, 20 NOV 2019

SOURCE: OCHA/FTS, 01 DEC 2019

SOURCE: WFP, 01 DEC 2019

