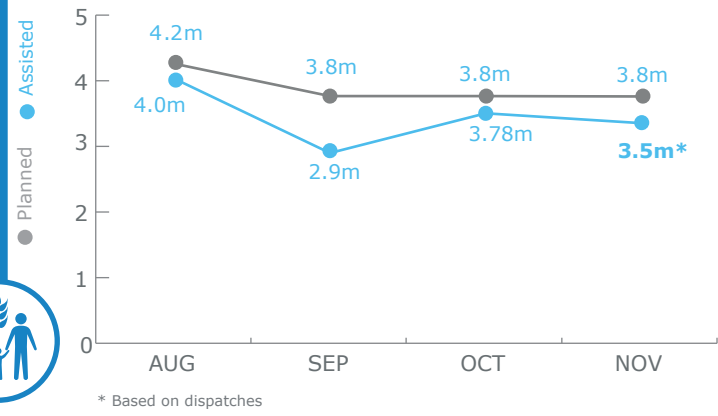


### PEOPLE ASSISTED

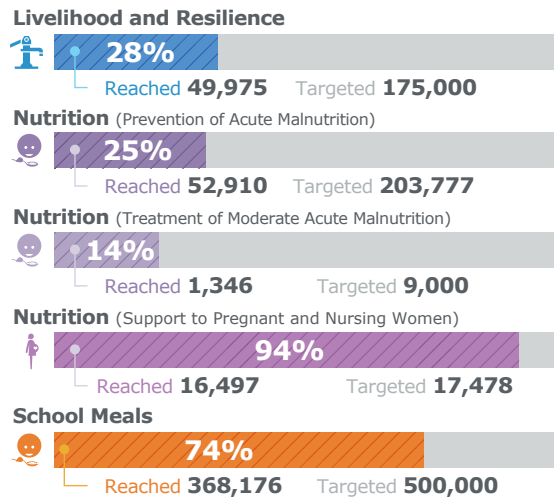
Protracted Relief and Recovery Operations 200988



#### PEOPLE ASSISTED THROUGH FOOD DISTRIBUTIONS



#### OTHER RELIEF ACTIVITIES - November 2017



### FUNDING

#### Syria Transitional Interim Country Strategic Plan (TICSP)



January - June 2018  
**US\$263m**  
Net Funding Requirements

2017 operations  
**100% funded**

Source: WFP, 07 December 2017

#### PROJECT FUNDING STATUS

Special Operation 200788 Logistics & Telecommunications Support to Humanitarian Operations in Syria (Jan 2015 - Dec 2017)

**104%**

**US\$13.6m**  
Total Received until the end of 2017

**US\$13.1m**  
Total Requirements in 2017

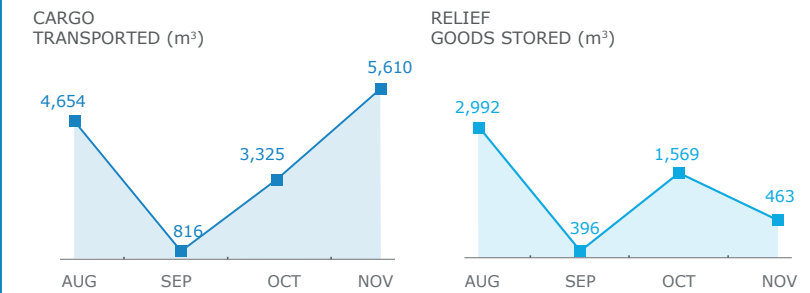
Source: PGG, 17 November 2017

**6.1m IDPs**  
(HNO, 2018)

**3.0m** in need in hard-to-reach and besieged areas (OCHA)

**10.5m** in need of Food & Livelihood Support (HNO, 2018)

#### WFP LED & CO-LED CLUSTERS



OCHA FTS, 12 December 2017; Clusters, 08 December 2017

### WFP LEVEL 3 EMERGENCY

SINCE 14 DECEMBER 2012

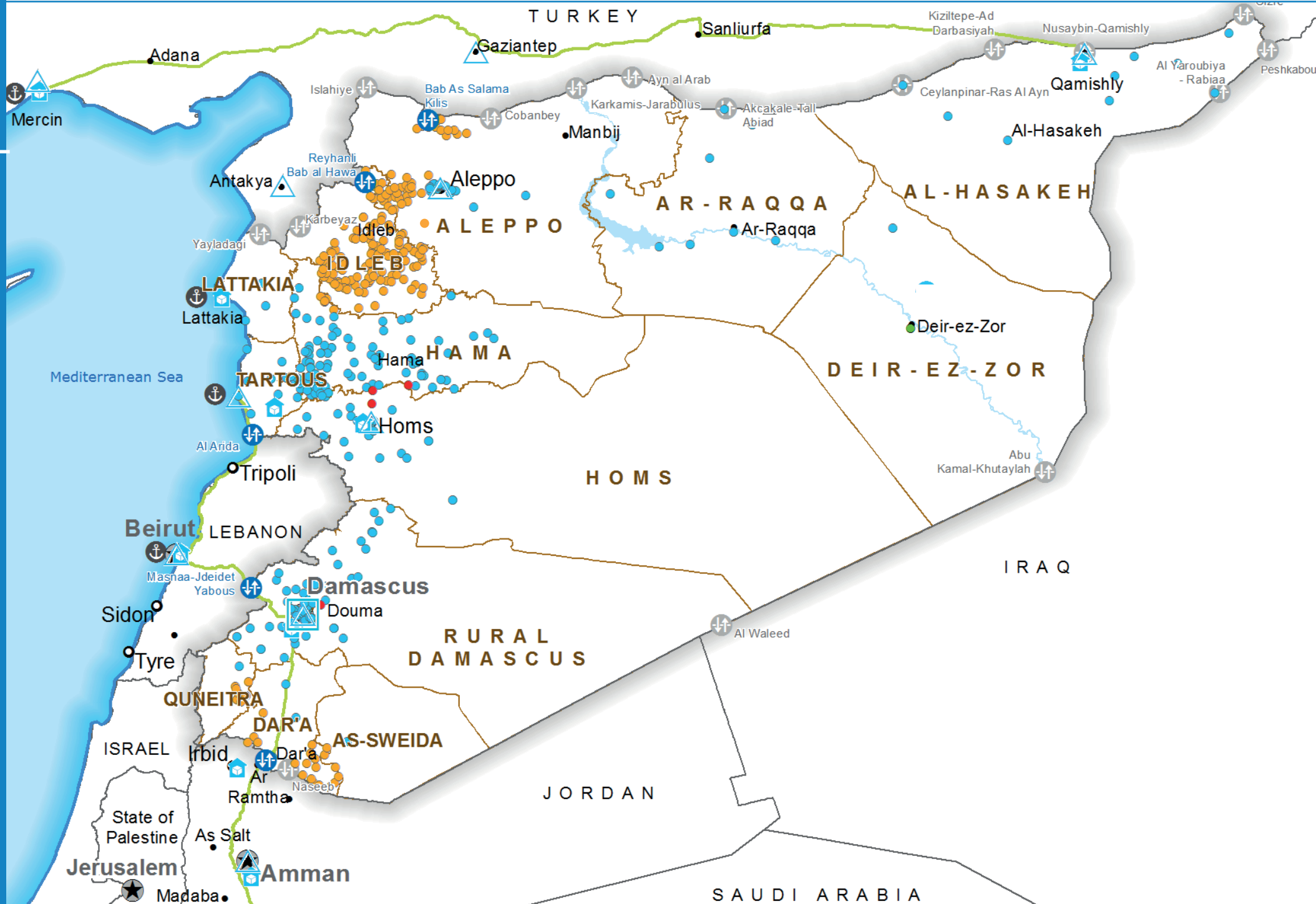
### IASC LEVEL 3 EMERGENCY

SINCE 15 JANUARY 2013

Check the **SITUATION REPORT**  
<https://www.wfp.org/countries/syria>

Jointly produced by the WFP Operations Centre (OPSCEN), the WFP Syria Country Office and the WFP Cairo Regional Bureau

This dashboard is based on best available information at the time of production. Future updates may vary as new information becomes available.



- Country Office
- Sub Office
- Field Office
- Road Supply Route
- Warehouse
- Open Border Crossing Point
- Sporadically Open Border Crossing
- International Boundary
- Governorate Boundary
- National Capital
- Major Town
- Intermediate Town
- Port
- Food Distribution Points (FDP) September 2017
- FDP - Regular Deliveries
- FDP - Cross-line Deliveries
- FDP - Cross-border Deliveries

Sources: OCHA, WFP, GLCSC, UNGIWG, UNHCR, Geonames

The designations employed and the presentation of material in the map(s) do not imply the expression of any opinion on the part of WFP concerning the legal or constitutional status of any country, territory, city or sea, or concerning the delimitation of its frontiers or boundaries. ©World Food Programme 2017