



World Food Programme

# WFP Cameroon

Situation Report

NW/SW response #01

November 2018



## In Numbers

**WFP SAYS NO to GENDER BASED VIOLENCE**

**4** provinces mainly affected (North West, South West, Littoral and West)

**4 million** people affected

**1.3 million** people in need of assistance

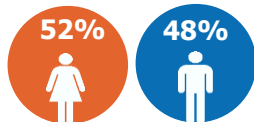
## Highlights

- In November 2018, 21,748 people (10,439 men, 11,309 women) from the North West and South West (NW/SW) regions residing in the Littoral region received food assistance.
- WFP Cameroon urgently requires US\$ 24 million in the next 6 months to provide food assistance through general food distribution to 400,000 vulnerable displaced and local host populations affected by the NW/SW crisis.

**21,748 People assisted**

November 2018

GENDER MARKER 2A



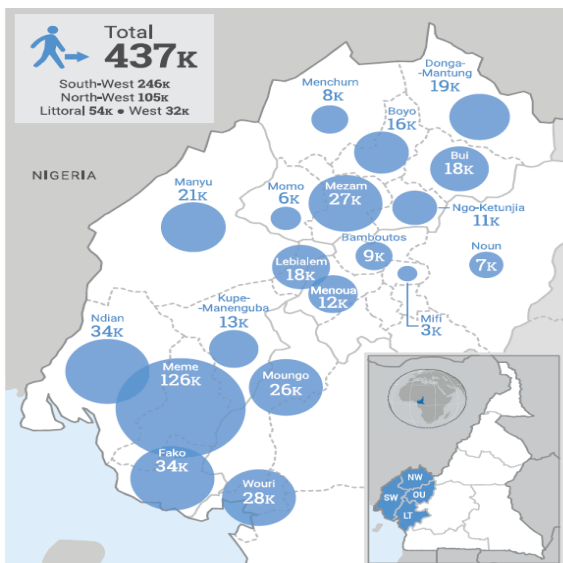
### WFP Net Funding Requirements

(Jan. 2019 – Jun. 2019)

#### Under Strategic Outcome 1; Activity 1

[Populations affected by NW/SW crisis have safe access to adequate and nutritious food.]

**USD 24 million**



OCHA: IDPs affected by NW/SW crisis.

## Situation Update

- Since June 2018, non-state armed groups (NSAG) have intensified their operations, notably around Kumba, Buea, Mamfé and Bamenda. While attacks were previously confined to rural areas and the Nigerian border, main town centres and peripheries are increasingly affected by the violence. On the other hand, security forces have intensified operations against NSAGs in the SW in October, and NW in November. Between March and October 2018, a drastic increase in the number of IDPs was recorded, going from 40,000 to a total of 440,000.
- Through joint efforts, WFP continues to coordinate with other agencies to assess the security situation and ensure favourable conditions on the ground for distributions (particularly in Kumba). A recent mission organized jointly with OCHA, UNDSS and the Logistics Cluster confirmed roads and access to markets have been significantly affected, as well as access to transport and warehouse facilities. Strengthened coordination on the ground is in place.

## WFP Response

- In an effort to respond to the growing needs of IDPs, WFP is scaling up its support to reach approximately 400,000 IDPs and local host populations affected by the NW/SW crisis who are in dire need of food assistance in the North West, South West, West and Littoral regions by April 2019. If the food security situation in NW/SW improves, WFP will gradually scale down its intervention after the lean season from July 2019, transitioning into recovery activities for the extremely vulnerable.

- WFP continues to build on its existing network of cooperating partners (CPs) to reach those in need located in difficult areas. Communication and partnerships with CPs are being strengthened to ensure that assistance is delivered in a timely manner, adhering to technical standards while ensuring it does not compromise the safety of beneficiaries.
- In December, WFP Cameroon is carrying out a mobile Vulnerability Analysis and Mapping (mVAM) in South West, North West, West and Littoral regions to assess levels of food insecurity. The remote survey on nutrition -mainly on Minimum Acceptable Diet (MAD) and Minimum Dietary Diversity for Women (MDD-W)- is to be conducted separately through telephone calls to targeted beneficiary households. Assessment results will be shared in January 2019.



## Food and Nutrition Assistance

- In November, 21,748 persons have been reached in the Littoral region. As an immediate response to the growing needs, distributions of unconditional food assistance to 50,000 vulnerable persons in the Littoral and West regions are ongoing. Another 50,000 IDPs are targeted for general food distribution in the South West region and the operation will start first in Kumba division by mid-December 2018.
- The daily ration is composed of 350 g of rice, 100 g of pulses, 50 g of super cereal, 35 g of vegetable oil and 5 g of salt, thus 540 g of food items representing the equivalent 2,100 Kcal/days.



## Supply Chain

- In October and November, a total of 539 metric tons of food commodities including super cereal, salt, rice, vegetable oil, yellow split peas were delivered to various distribution sites in the Littoral and South West regions.
- WFP is procuring food locally, regionally and internationally through open competition to ensure the food quality, cost-efficiency and timely delivery.
- Taking advantage of the Douala port, the major seaport in the Central Africa region, food is supplied through Douala to all distribution sites.

## Clusters and Common Services



### Food Security Cluster

- The cluster is still looking for a Food Security Cluster Coordinator. Meanwhile, WFP is identifying additional local partners with food assistance activities to ensure a harmonised strategy.



### Logistics Cluster

- The Logistics Cluster was activated in October to provide logistics support to the wider humanitarian community responding in the affected areas. So far, 27 organizations have attended the Logistics Cluster coordination meetings in Yaounde (the capital) and Buea (South West).
- Based on an initial assessment and partner needs, logistics coordination and information management services are currently offered to humanitarian actors on the ground. The Cluster is also working on warehouse and road assessments to support organizations' informed decision-making.
- Operational updates and maps are being published on <https://logcluster.org/ops/cmr18a>

## Coordination and Partnerships

- WFP continues to strengthen coordination with local partners such as the Cameroon Red Cross (CRC) and the Reach-Out to distribute food in sites with restricted access.

## Challenges and Constraints

- Access to people in need in the NW/SW regions is limited mainly due to security constraints, ongoing violent clashes, kidnappings, etc.

## Contacts

- Isabelle Wega, Communication Officer, [isabelleflore.wega@wfp.org](mailto:isabelleflore.wega@wfp.org)
- Yueyue Li, Partnership Officer, [yueyue.li@wfp.org](mailto:yueyue.li@wfp.org)
- For further information, visit the Cameroon page on [www.wfp.org/countries/cameroon](http://www.wfp.org/countries/cameroon) or follow our stories on Facebook <https://web.facebook.com/wfp.westafrica>

## WFP NW/SW Response

	Scale-up requirements between January 2019 and June 2020 (in USD)	Total allocated contributions for scale-up in 2019 (in USD)	6 Months Net Funding Requirements (in USD)	Planned number of beneficiaries	Women	Men
General Food Distribution	48 million	2.1 million (4%)	24 million	400 000	208,000	192 000