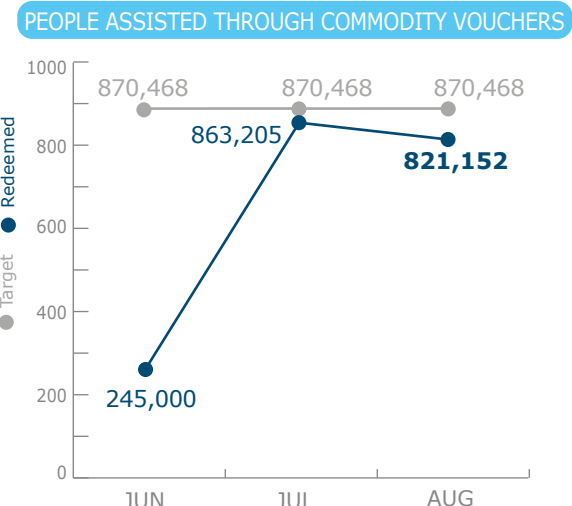
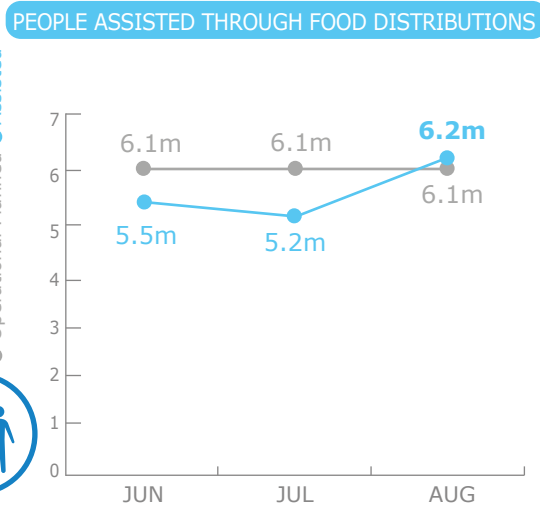


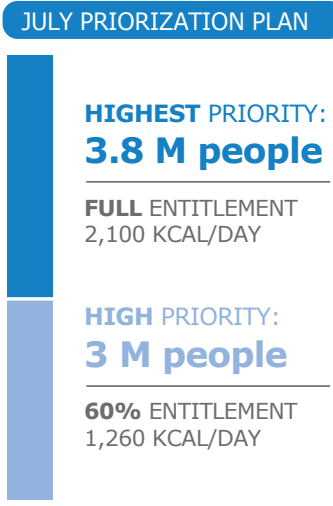
### PEOPLE ASSISTED

Emergency Operation 201068

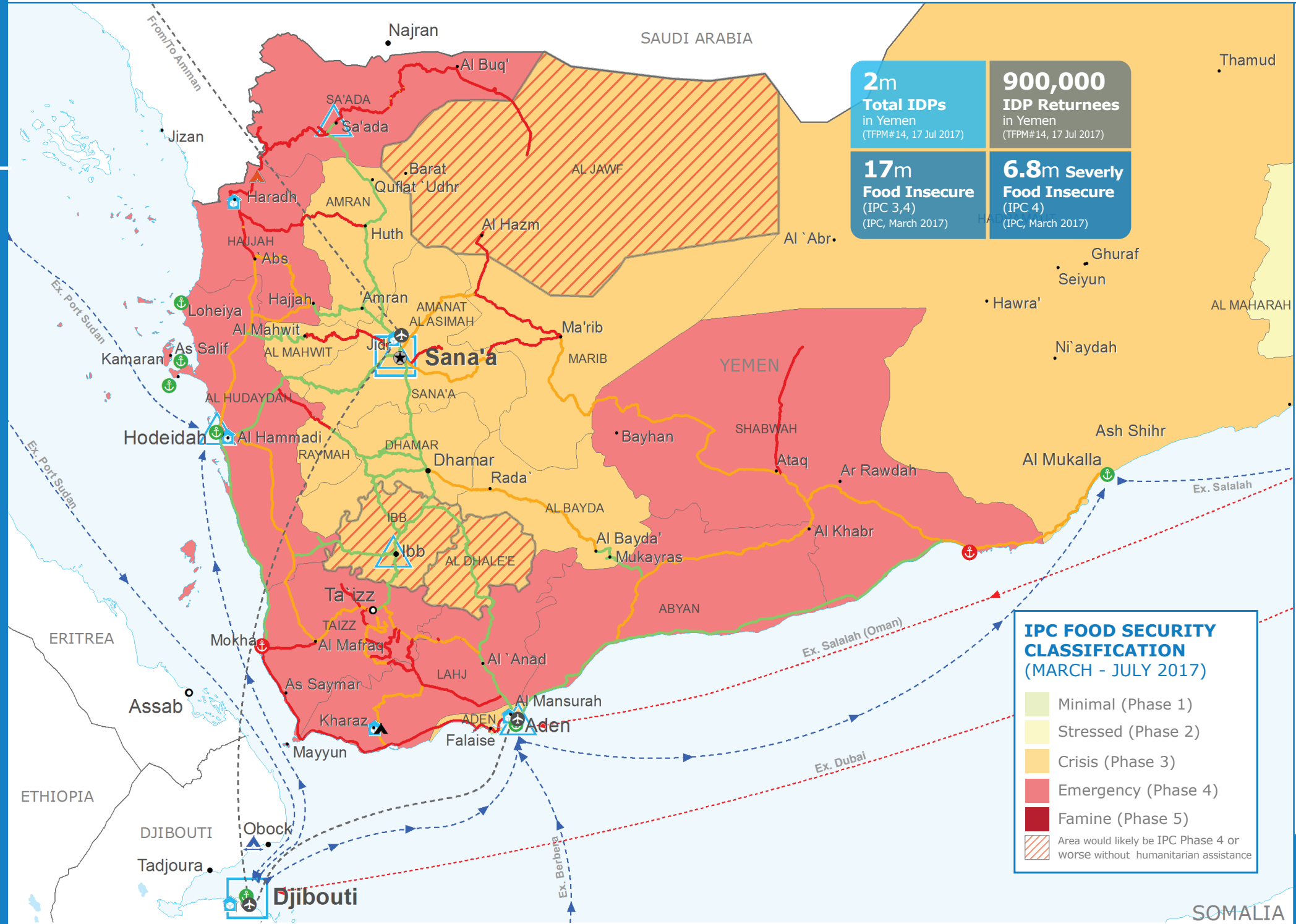
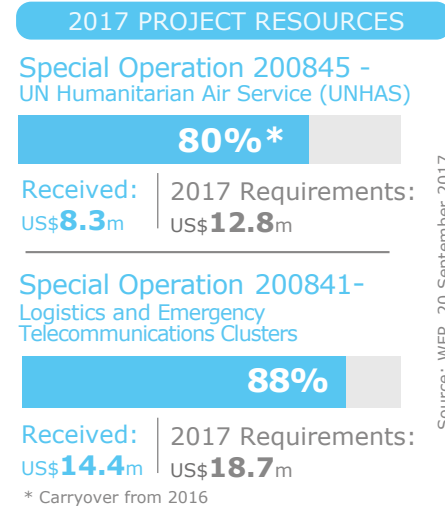


### PEOPLE TARGETED

Emergency Operation 201068



### FUNDING



**2m** Total IDPs in Yemen (TFPM#14, 17 Jul 2017)

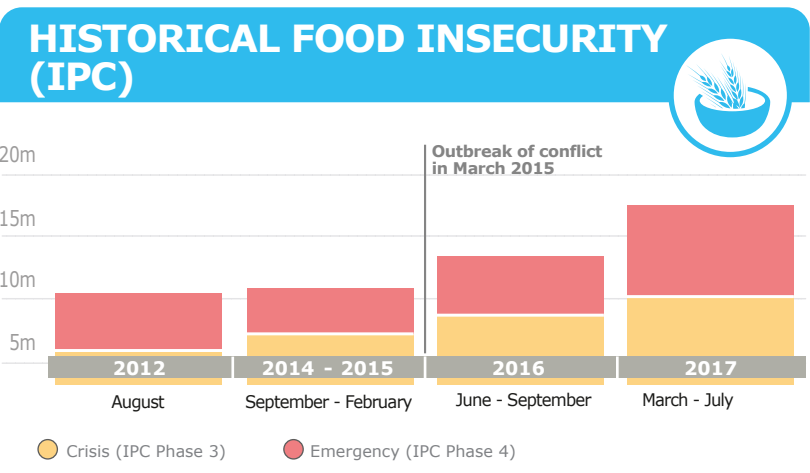
**900,000** IDP Returnees in Yemen (TFPM#14, 17 Jul 2017)

**17m** Food Insecure (IPC 3,4) (IPC, March 2017)

**6.8m** Severely Food Insecure (IPC 4) (IPC, March 2017)

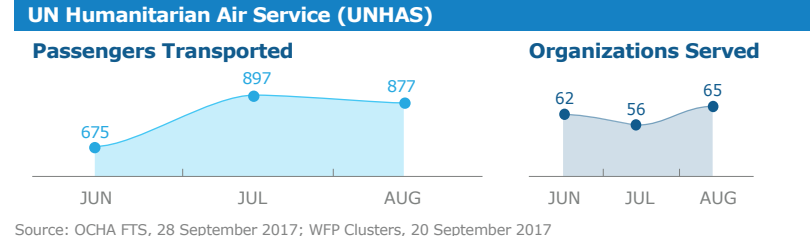
#### IPC FOOD SECURITY CLASSIFICATION (MARCH - JULY 2017)

- Minimal (Phase 1)
- Stressed (Phase 2)
- Crisis (Phase 3)
- Emergency (Phase 4)
- Famine (Phase 5)
- Area would likely be IPC Phase 4 or worse without humanitarian assistance



#### WFP LED & CO-LED CLUSTERS

Cluster	2017 Requirements	Received	Number of partners
Food Security and Agriculture Cluster	US\$1.1b	US\$480.6m	75 (2017)
Emergency Telecommunications Cluster	US\$3.2m	US\$1.5m	12 (July)
Logistics Cluster	US\$15.5m	US\$12.9m	23 (Apr), 24 (May), 21 (Jun), 29 (Jul)



### WFP LEVEL 3 EMERGENCY

SINCE 03 JULY 2015 IASC LEVEL 3 (SINCE 01 JULY 2015)

For more information, see the **SITUATION REPORT** and **COUNTRY BRIEF** [www.wfp.org/countries/yemen](http://www.wfp.org/countries/yemen)

- Country Office
- Field Office
- Warehouse
- IDP Camp
- Refugee Camp
- Transit Camp
- Sea Route Open
- Sea Route Closed
- UNHAS Connection
- UNHAS Route
- Port Operational
- Port with Restricted Access
- Port Closed
- Road Status
- Road Open
- Road With Restricted Access
- Closed Road
- National Capital
- Major Town
- Intermediate Town
- Small Town
- International Bounda
- Governorate Boundary

Sources: WFP, UNGIWG, GAUL, GLCSC, OCHA, UNHCR, Logistics Cluster, 16 June 2017. The designations employed and the presentation of material in the map(s) do not imply the expression of any opinion on the part of WFP concerning the legal or constitutional status of any country, territory, city or sea, or concerning the delimitation of its frontiers or boundaries. © World Food Programme 2017