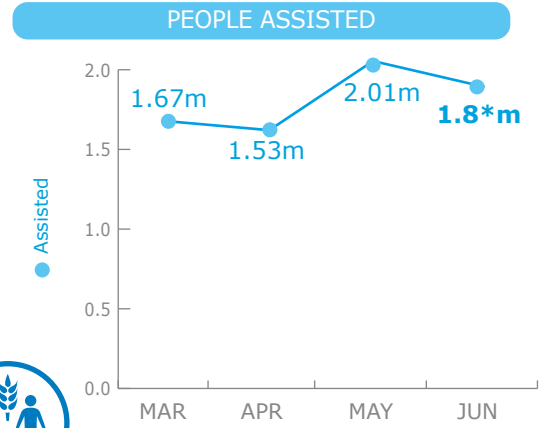


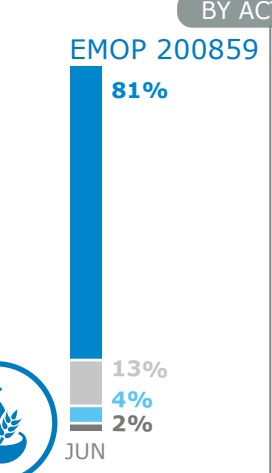
BENEFICIARIES

EMOP 200859 & PRRO 200572



*The decrease in number of people assisted in June is due to 21 flying days lost due to lack of flight clearance from aviation authorities.

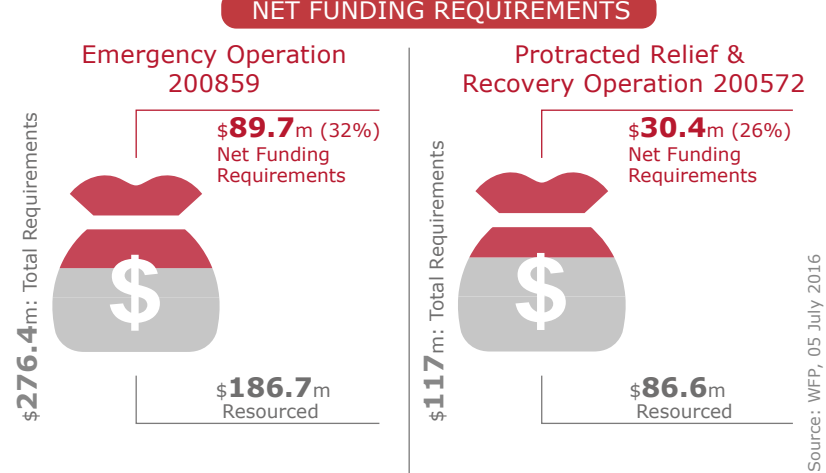
OPERATIONAL PROFILE



Percentages of activities include overlaps, i.e. beneficiaries that have been assisted with two or more different activities.

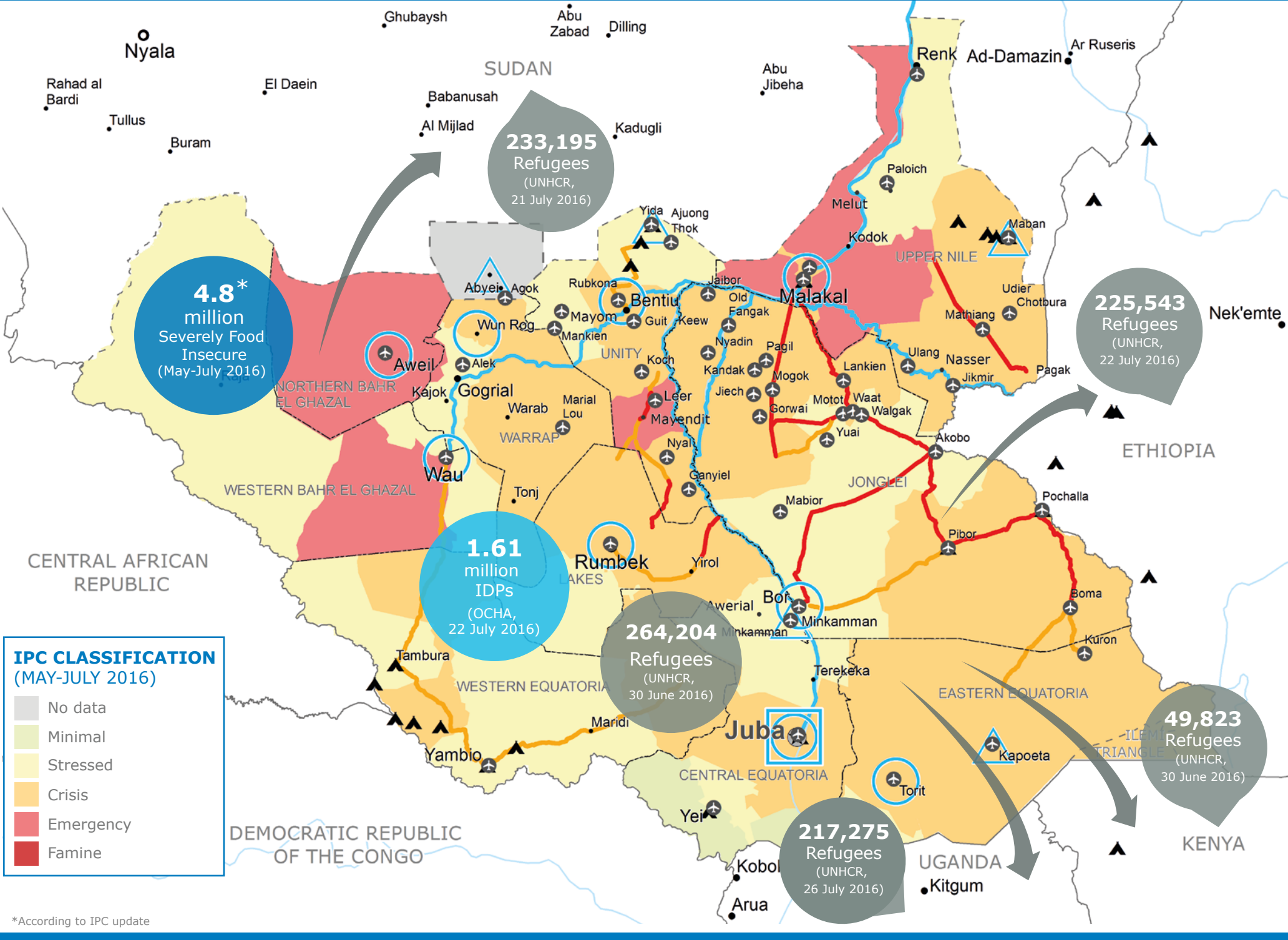
FUNDING

Six Month Outlook



PROJECT FUNDING STATUS

Special Operation 200778 Logistics Cluster	98%
Received: \$69.7m	Total Required: \$71m
Special Operation 200786 Humanitarian Air Service	77%
Received: \$90.8m	Total Required: \$117.9m
Special Operation 200931 Emergency Telecommunication Cluster	100%
Received: \$663,000	Total Required: \$663,000



IPC CLASSIFICATION (MAY-JULY 2016)

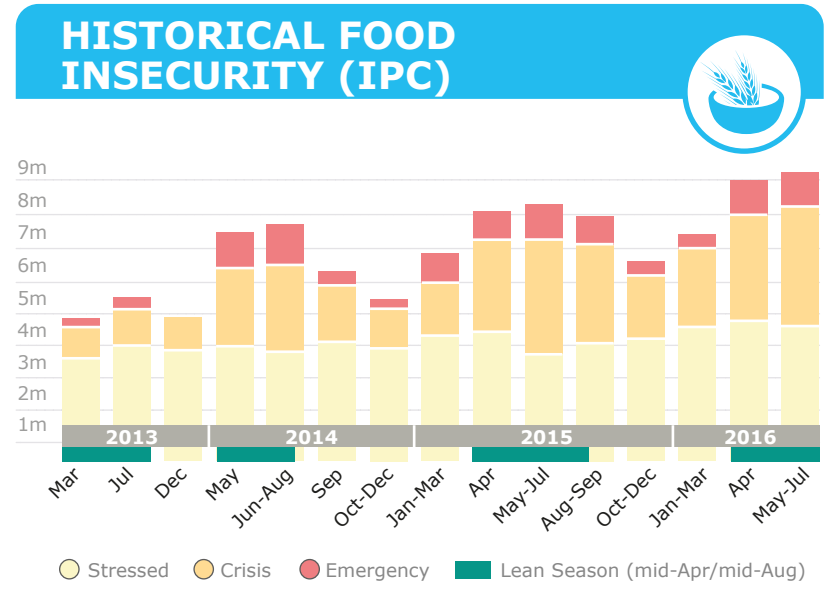
- No data
- Minimal
- Stressed
- Crisis
- Emergency
- Famine

- Country Office
- Sub Office
- Field Office
- Refugee / IDP Camp
- Barge Supply Route
- Closed Road
- Road with Limited Access
- National Capital
- Major Town
- Intermediate Town
- Small Town
- International Boundary
- Undetermined Boundary
- Abyei Region
- State Boundary

Sources: WFP, UNGIWG, GAUL, GLCSC, OCHA, UNHCR, IPC
 The designations employed and the presentation of material in the map(s) do not imply the expression of any opinion on the part of WFP concerning the legal or constitutional status of any country, territory, city or sea, or concerning the delimitation of its frontiers or boundaries.
 © World Food Programme 2016

OPERATIONAL CHALLENGES

- Insecurity
- Humanitarian Access
- Resources
- Rainy Season until October (3/4 prepositioned)
- Criminality
- Economic Volatility



WFP LEVEL 3 EMERGENCY

SINCE 23 DECEMBER 2013

Check the **SITUATION REPORT**
<https://www.wfp.org/countries/SOUTH-SUDAN>

2A EMOP 200859
<http://documents.wfp.org/stellent/groups/public/documents/ep/WFP284303.pdf>

Produced by the WFP **Operations Centre (OPSCEN)** jointly with Country Office and Regional Bureau Nairobi
 This dashboard is based on best available information at the time of production. Future updates may vary as new information becomes available.

