



WFP Mozambique Flood Response Update

28 May 2019



In Numbers

Cyclone Idai

- 1.85 million people affected
- 4 provinces and 50 districts affected
- 32,375 people displaced in 29 accommodation centres and 34,520 people displaced in 33 resettlement sites
- 1.5 million people received food assistance

Cyclone Kenneth

- 373,857 people in need of humanitarian assistance in Nampula and Cabo Delgado (HRP)
- 2 provinces and 21 districts affected
- 20,038 people displaced in accommodation centres
- 155,701 people received regular food assistance

Highlights

- Since 14 March, WFP has assisted **1.7 million** people affected by **Cyclone Idai** (Sofala, Manica, Tete and Zambezia provinces) and **Cyclone Kenneth** (Cabo Delgado and Nampula provinces).
- For **Cyclone Idai**, **1,507,159** people have been reached with food assistance.
- Since the beginning of the **Cyclone Kenneth** response, WFP has assisted **155,701** people with regular food rations, and **55,626** people with immediate assistance at the onset, in the disaster-affected districts of Macomia, Ibo, Quissanga, Pemba (Cabo Delgado) and Erati and Memba (Nampula).

Overview

- As the initial three-month emergency response phase for Cyclone Idai is expected to be completed by mid-June, WFP and partners are preparing the transition to recovery, reconstruction and resilience-building activities. Various assessments are ongoing to inform next steps and determine needs and assistance modalities.
- During the last week, several donor delegations have visited Beira. On 23 May, the Swedish Minister of International Development received a brief on WFP's Cyclone Idai operation. The delegation also took a flight over Buzi and visited the resettlement camp of Mandruzi.
- On 23 May, the third secretary of the Japanese Embassy visited Mutua resettlement camp and Mococho – a hard-to-reach area – along with WFP staff.
- On 28 May, a Canadian delegation visited WFP operations in Mandruzi resettlement camp, accompanied by WFP's Deputy Country Director. They witnessed WFP's first value voucher distribution at the site.
- On 25 May, during a high-level ceremony at the Beira Airport, WFP donated logistics equipment to the airport authorities. Mr. Jakob Kern, WFP Supply Chain Director, attended the ceremony as well as governmental officials and DFID representatives. The event was covered by local media.

WFP Response

Cyclone Idai

- WFP continues to expand the Cyclone Idai emergency response and, in collaboration with the authorities and humanitarian partners, assisted **1.5 million people** (1,507,159) with food assistance in 695 locations across the four disaster-affected provinces, through in-kind food distributions and commodity vouchers.
- As flood waters have receded, WFP has been able to access more locations by road, and air operations have been fully phased out. The third distribution cycle is ongoing and has so far reached 157,595 people.
- WFP continues to scale up **cash-based transfer (CBT)** programmes (commodity and value vouchers) aiming to reach 400,000 people. The third cycle of CBT interventions will prioritize the urban areas of Beira, Dondo and Nhamatanda with value vouchers and the semi-urban and rural areas of Beira and Tete with commodity vouchers. On 28 May, WFP launched the first value vouchers in Dondo covering 365 families.

- A retailers' expression of interest exercise was concluded this week and resulted in 9 additional retailers being identified for immediate contracting and 5 retailers being shortlisted for future needs in Beira, Dondo and Nhamatanda in support of the Cash Based Transfers (CBT) scale-up.
- The data enhancement process using the SCOPE system (WFP's beneficiary information and transfer management platform) continues to be implemented. So far, data for more than 10,000 households has been collected in Sofala, and assistance cards are now being distributed to beneficiaries. As of next week, data collection and issuance of cards will also start in the provinces of Manica and Tete.
- As operations progressively transition to the early recovery phase, WFP is preparing to implement its *Relief-Recovery-Resilience strategy* by focusing on humanitarian needs while introducing programmes and conditionalities that support recovery, reconstruction and resilience.

Affected Provinces	Number of beneficiaries reached
Sofala (Beira, Buzi, Caia, Cheringoma, Chibabava, Dondo, Gorongosa, Machanga, Maringue, Marromeu, Muanza, Nhamatanda)	1,015,245
Tete (Doa, Mutarara, Tete City)	125,990
Zambezia (Chinde, Derre, Gurue, Luabo, Lugela, Maganja da Costa, Milange, Molumbo Mopeia, Namacura, Nicoadala)	188,396
Manica (Gondola, Macate, Manica, Mossurize, Sussundenga, Vanduzi)	177,528
TOTAL	1,507,159

Cyclone Kenneth

- Since the beginning of the Cyclone Kenneth response, WFP in collaboration with government authorities and humanitarian partners, assisted **155,701 people** in the disaster-affected districts of Macomia, Ibo, Metuge and Quissanga (Cabo Delgado province) and Erati and Memba districts in Nampula province, through in-kind food distributions. Food distributions in these locations are accompanied by shelter material, health kits and, where possible, water purification tablets provided by humanitarian partners. In addition, WFP reached **55,626 people at the beginning of the response with assistance**, including High Energy Biscuits (HEB) and other food items.

Affected Provinces	Affected Districts in Cabo Delgado & Nampula	Number of beneficiaries reached
Cabo Delgado	Ibo	16,125
	Macomia	87,091
	Metuge	1,200
	Quissanga	9,775
	Macomia (Mucojo)	14,540
Nampula	Erati	19,250
	Memba	7,720
TOTAL		155,701

*Beneficiary figures reported are cumulative. This ensures that unique beneficiaries are counted, and not individuals reached multiple times. WFP is however reaching beneficiaries by cycles. Currently the response to Cyclone Idai is under the third cycle (15 May – 15 June).

The response to Cyclone Kenneth is still under the first cycle (25 April – 25 May). For the Kenneth response, WFP also reached 55,626 people with an emergency 3-day ration of HEB. These people are not reported in this table where the regularly assisted beneficiaries are reported by cycle of general food distributions.

Nutrition Assistance – Idai Response

- WFP is supporting the Ministry of Health's Nutrition Rehabilitation Programme with the provision of ready-to-use supplementary food (RUSF) and Super Cereal (CSB+) to treat moderate acute malnutrition in children under the age of five and acute malnutrition in pregnant and lactating women.
- In the past week, WFP dispatched enough ready-to-use supplementary food (RUSF) and Super Cereal (CSB+) to treat moderate acute malnutrition in 2,489 children aged 6 – 59 months and acute malnutrition in 2,240 Pregnant and Lactating Women (PLW) for one month, in health facilities in the districts of Namarroi, Inhassunge, Manganja da Costa, Milange in Zambezia province.
- WFP delivered RUSF to 39 health facilities and CSB+ to 38 health facilities in four districts (Buzi, Marromeu, Muanza, Nhamatanda), in Sofala, where the supplements until now were stored at district level.
- Data collection for the first monthly report of the National Nutrition Program in the 27 districts of Zambezia and Sofala has started. The results are expected by mid-June.
- On 21 May, WFP and UNICEF visited two health facilities in Dondo district, along with nutritionists from Nairobi, New York, and Maputo offices.

Protection

- The 24/7 inter-agency hotline Linha Verde has been operational for 12 days and over 350 cases have been registered so far. The Linha Verde team is analysing issues as they come in and referring cases to humanitarian partners in accordance with established processes based on the urgency of each case.
- Types of cases range from thanks for the support provided, requests for information, and complaints. Complaints span all intervention areas of food security, health, water, sanitation and hygiene (WASH), shelter and education.
- Dissemination materials are being provided to cooperating and external partners on Complaints and Feedback Mechanisms (CFM) and Linha Verde, allowing for wide outreach to beneficiaries at key humanitarian assistance delivery points.
- Prevention of Sexual Exploitation and Abuse (PSEA) trainings continue being co-facilitated on a weekly basis by WFP and PSEA co-chairs, aiming to reach 100% compliance rate among humanitarian workers.

Assessments

- **Crop and Food Security Assessment Mission (CFSAM)** data collection was finalized in all provinces, including Cabo Delgado and Nampula. It is hoped that findings will be presented at the donor conference in Beira on 1 June.
- **Rapid Emergency Food Security Assessment (EFSA)**: preliminary results for the provinces affected by Cyclone Idai have been published and IPC (Integrated Food Security Phase Classification) results are expected by mid-June. In Cabo Delgado province, data collection is ongoing in coordination with the Technical Secretariat for Food Security (SETSAN).

Funding Situation

WFP launched an appeal for USD 140 million for the **Cyclone Idai** emergency response. These funds are urgently required to allow WFP and partners to provide food and nutrition assistance to affected populations, as well as logistics and telecommunications support, for a period of 3 months. As of 27 May, **the funding shortfall stood at USD 70.7 million**, based on confirmed and high probability contributions.

WFP requires USD 30 million for the **Cyclone Kenneth** emergency response. As of 27 May, the **funding shortfall stood at USD 24 million**. These funds are required to enable the provision of food and nutrition assistance to affected populations, as well as logistics and telecommunications support to 320,000 people, for 3 months.

Humanitarian Coordination

Food Security Cluster



- In response to Cyclone Idai, **FSC partners had assisted 1,823,717 people** with food assistance as of 24 May, in the provinces of Sofala, Tete, Zambezia and Manica. As of May 2019, FSC partners have provided farming support (seeds and tools) to more than 118,000 farmers in the provinces of Sofala and Manica.
- In response to **Cyclone Kenneth**, **FSC partners had assisted 385,674 people** as of 27 May, in the provinces of Cabo Delgado and Nampula.
- Livelihoods interventions are being planned for the recovery phase of the Idai response, including through the distribution of kits of horticultural crop seeds in Manica, Sofala, Zambezia and Tete provinces. For the Kenneth response, this includes support to farmers, and farmers' associations, with fast-growing varieties of vegetable seeds, as well as support to 10,000 fishermen with fishing boats, fishing nets, engines and capacity building.

Logistics Cluster



Cyclone Idai

- The Logistics Cluster storage facility at Beira Airport will be closed following the ceasing of air operations, although common storage will still be available to the humanitarian community at the Logistics Cluster warehouse in Beira city. Common storage is

also available in Buzi and Nhamantanda.

- Following the scaling down of the response in Chimoio, the Logistics Cluster common storage space will close at the end of the month.
- The Logistics Cluster has supported 75 organizations throughout the Cyclone Idai response.

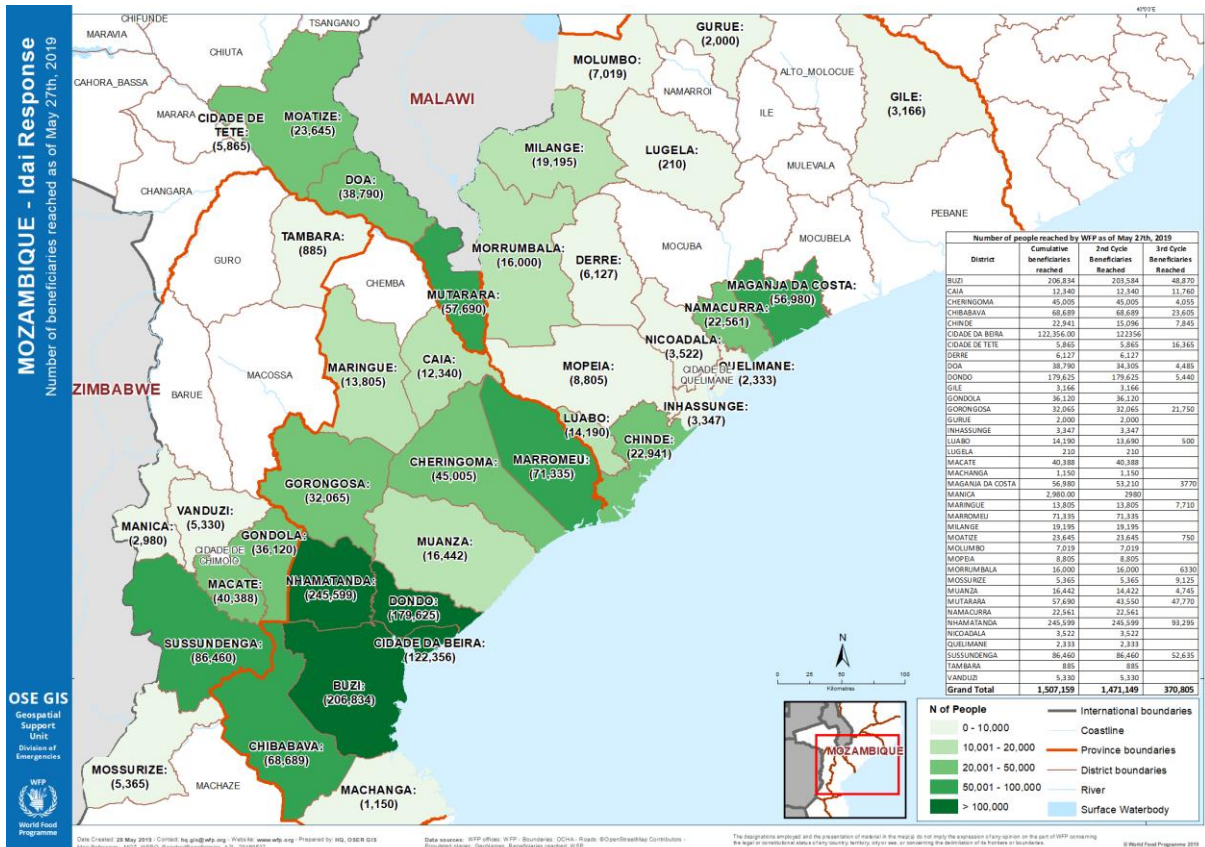
Cyclone Kenneth

- WFP, as lead agency of the Logistics Cluster, has made one Mi-8 helicopter available to the humanitarian community for the transport of cargo to remote and hard-to-reach areas. To date, 70 mt of relief items have been transported by helicopter on behalf of ten partners.
- Logistics Cluster common storage facilities in Pemba have so far received 235 mt of relief items for storage during the response. A mobile storage unit will also be made available to partners in Mucojo.
- The Logistics Cluster has supported rapid assessment and distribution missions coordinated by OCHA to areas still cut off following Cyclone Kenneth.
- The Logistics Cluster continues to facilitate a passenger transport service offered by UNHAS via one Caravan aircraft, travelling to Ibo and Matemo Islands. The service is expected to run until the end of May.

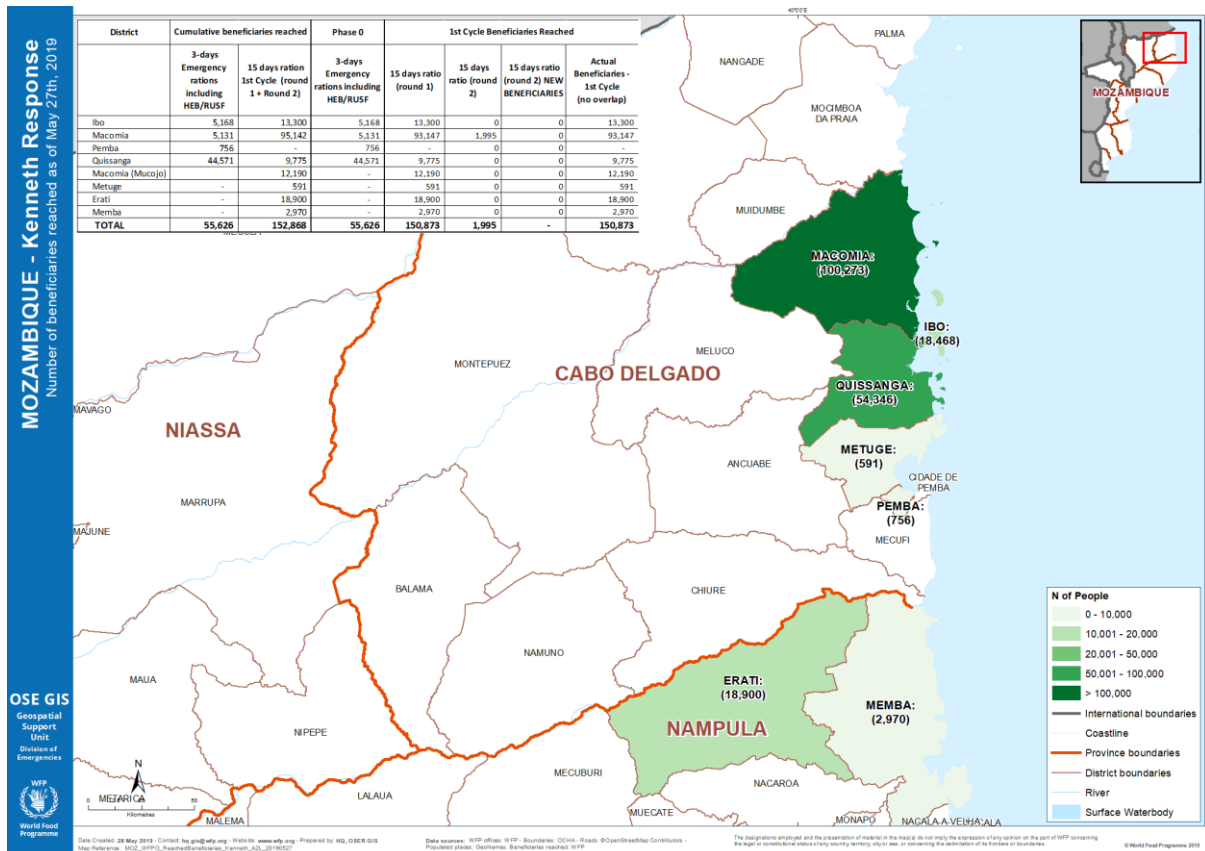
Emergency Telecommunications Cluster



- Since the beginning of the response to Cyclone Idai, the ETC has provided internet connectivity to over 1,800 users in Beira, Buzi and Nhamatanda, Sofala province, and 440 organizations have been supported.
- WFP is working with cluster partners (Ericsson response and the Government of Luxembourg) to re-establish vital networks that can accelerate the response by the Government and humanitarian agencies.
- ETC support to the Cyclone Kenneth response includes the provision of connectivity services in two sites in Pemba, and four sites on Ibo island.
- ETC has been requested to establish a Security Communications Centre in Macomia, Cabo Delgado, for three months to ensure the safety and security of the increasing number of humanitarians there. The ETC has installed a VHF (very high frequency) antenna on Ibo Island, covering Macomia and Mucoju.



Map indicating the number of people reached by WFP, in collaboration with partners, in provinces affected by Cyclone Idai and floods (as of 27 May).



Map indicating the number of people reached by WFP, in collaboration with partners, in provinces affected by Cyclone Kenneth and floods (as of 27 May).

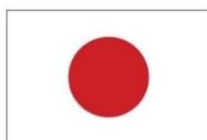
Emergency response to Tropical Cyclones Idai and Kenneth has been made possible thanks to generous contributions received so far from (in alphabetical order):



European Union
Civil Protection and
Humanitarian Aid



MINISTRY FOR FOREIGN
AFFAIRS OF ICELAND



From
the People of Japan

