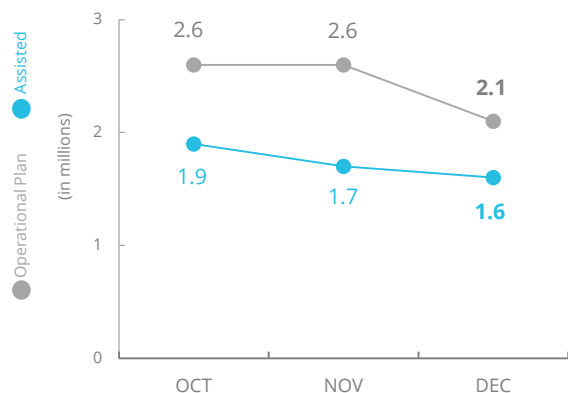


South Sudan



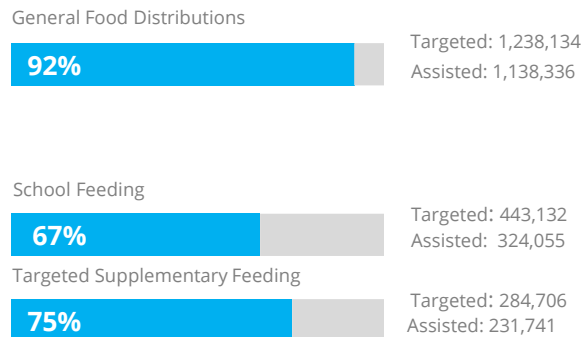
PEOPLE ASSISTED

South Sudan Interim Country Strategic Plan (ICSP)



OPERATIONAL PROFILE

By Activity (December)



SOURCE: WFP, 31 JAN 2020



FUNDING

South Sudan Interim Country Strategic Plan (ICSP)

February – July 2020

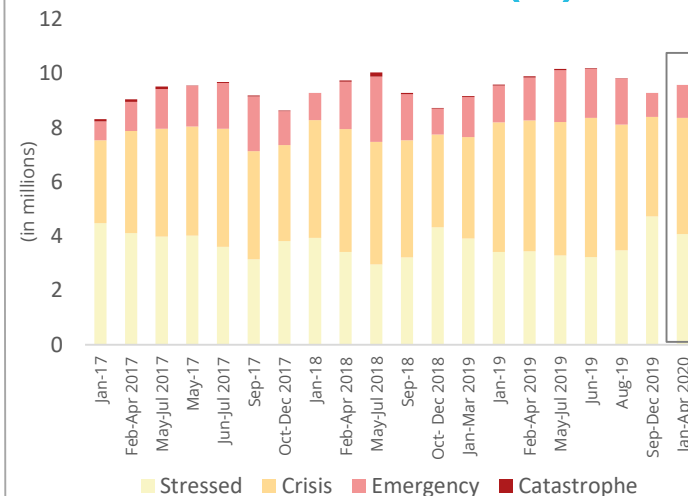
US\$ 331.0m
Net funding requirements

2020 LEVEL 3 RESPONSE
Requirements: US\$931.6m
Contributions: US\$335.4m

36%

SOURCE: WFP, 24 JAN 2020

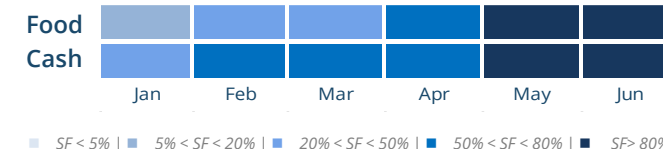
HISTORICAL FOOD INSECURITY (IPC) TRENDS



AVERAGE MONTHLY FUNDING REQUIREMENTS

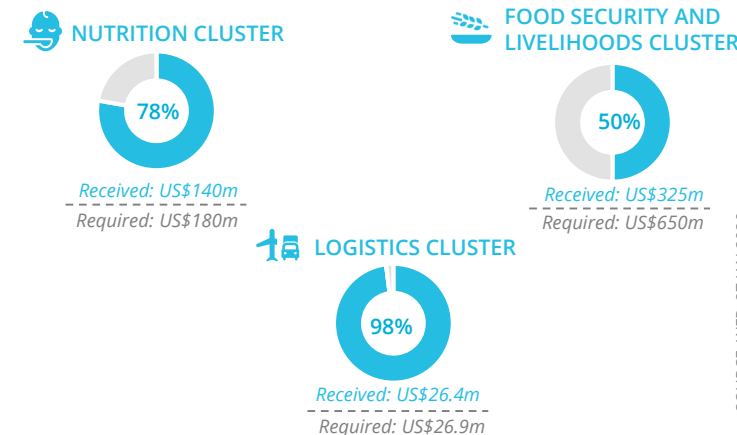
Food US\$ 89.3m | Cash US\$ 9.2m

EXPECTED SHORTFALLS



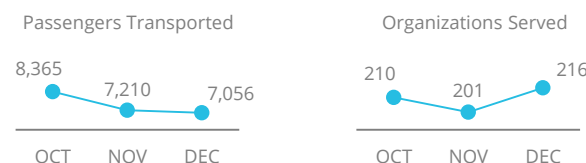
SOURCE: WFP, 27 JAN 2020

WFP-LED AND SUPPORTED CLUSTERS



SOURCE: WFP, 27 JAN 2020

UN HUMANITARIAN AIR SERVICES (UNHAS)



SOURCE: WFP, 24 JAN 2020

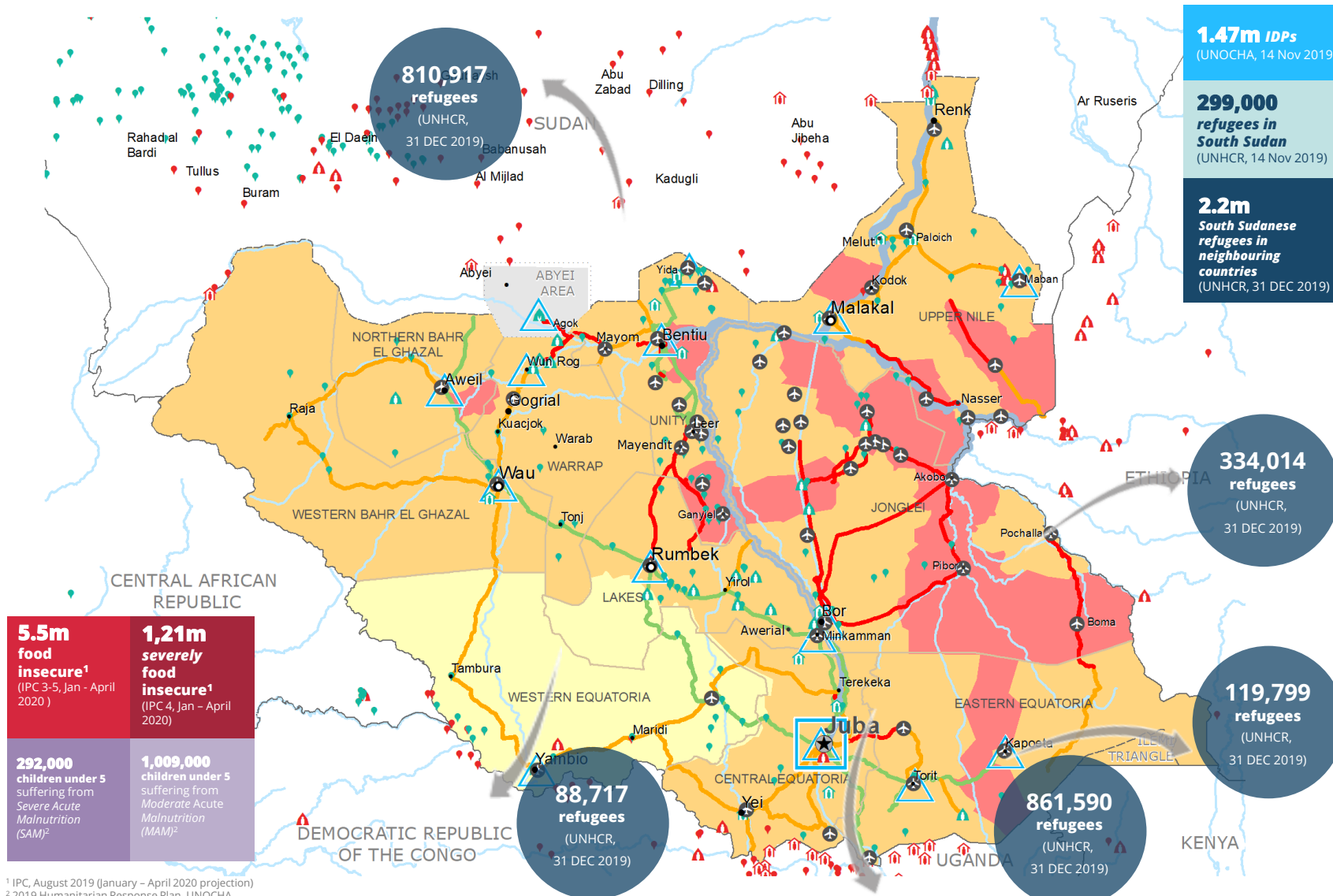
WFP LEVEL 3 EMERGENCY
SINCE 23 December 2013



For more information, see the [SITUATION REPORT](#) and [COUNTRY BRIEF](#)
www.wfp.org/countries/south-sudan

South Sudan Interim Country Strategic Plan
<http://documents.wfp.org/assets/media/public/documents/ipp/WFP20-033.pdf>

Produced by the WFP Operations Centre (OPSCEN) jointly with Country Office and Regional Bureau Nairobi. This dashboard is based on best available information at the time of production. Future updates may vary as new information becomes available.



¹ IPC, August 2019 (January – April 2020 projection)
² 2019 Humanitarian Response Plan, UNOCHA

IPC Food Security Classification

January - April 2020 Projection



Sources: WFP, UNGIWG, GAUL, GLCSC, OCHA, UNHCR. Access Constraints Map, 24 January 2020.

The designations employed and the presentation of material in the map(s) do not imply the expression of any opinion on the part of WFP concerning the legal or constitutional status of any country, territory, city or sea, or concerning the delimitation of its frontiers or boundaries. © World Food Programme 2019.