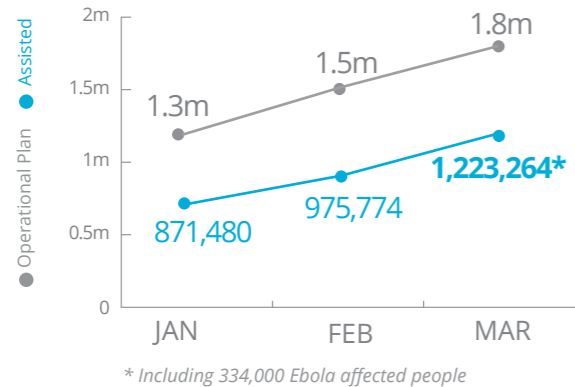


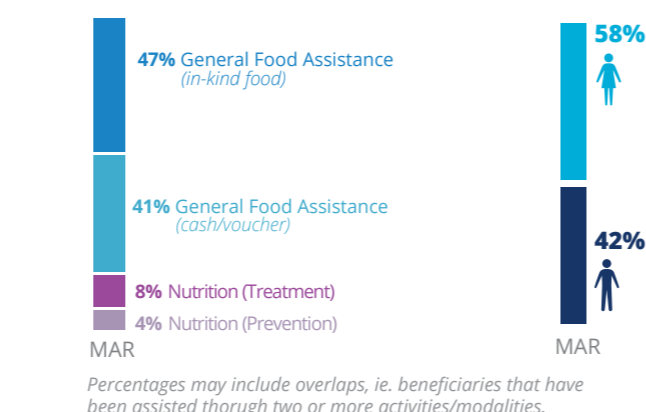
Democratic Republic of Congo

PEOPLE ASSISTED

DR Congo Interim Country Strategic Plan (ICSP)
(Activities in the six provinces covered by WFP L3 Emergency Response)



OPERATIONAL PROFILE



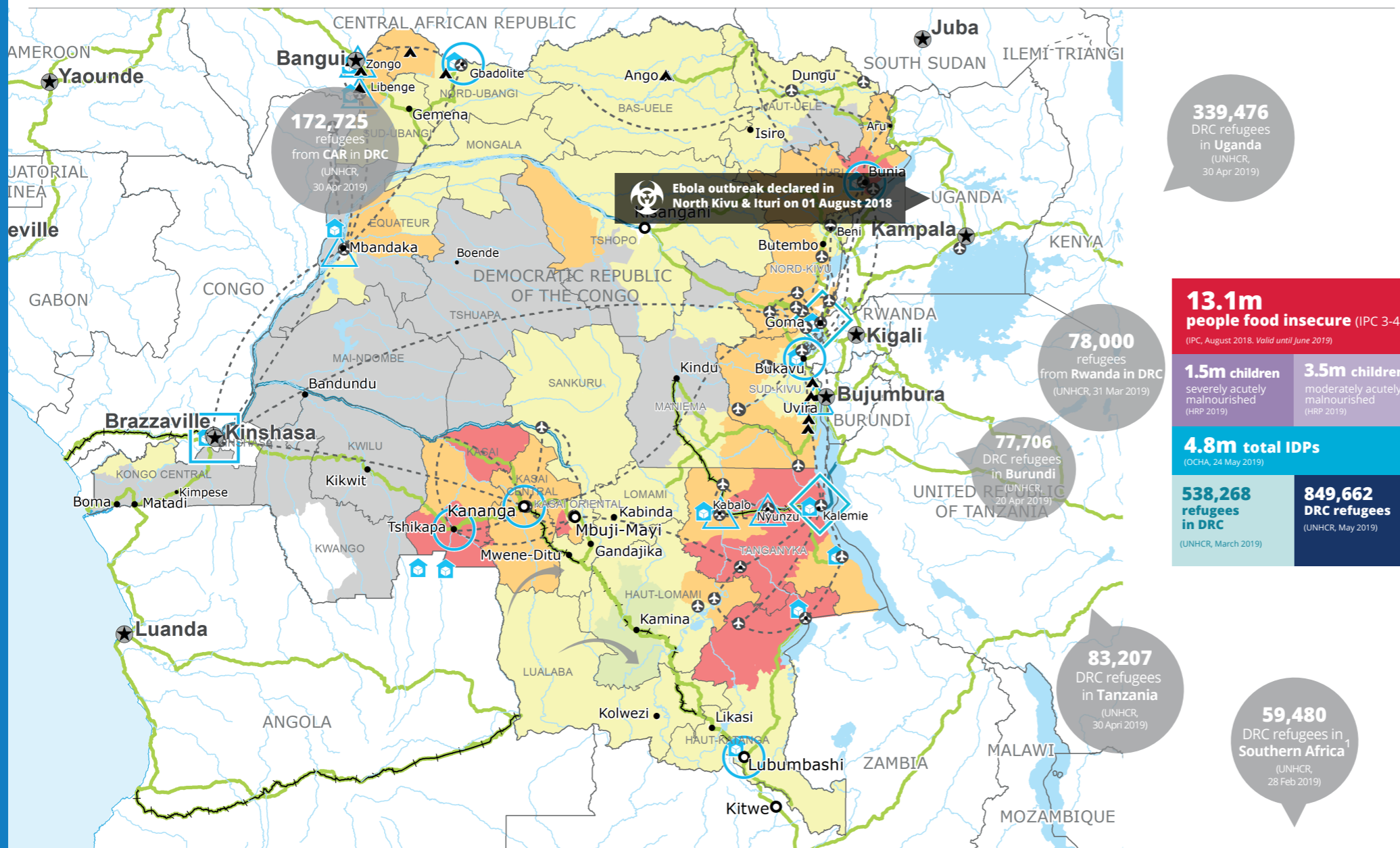
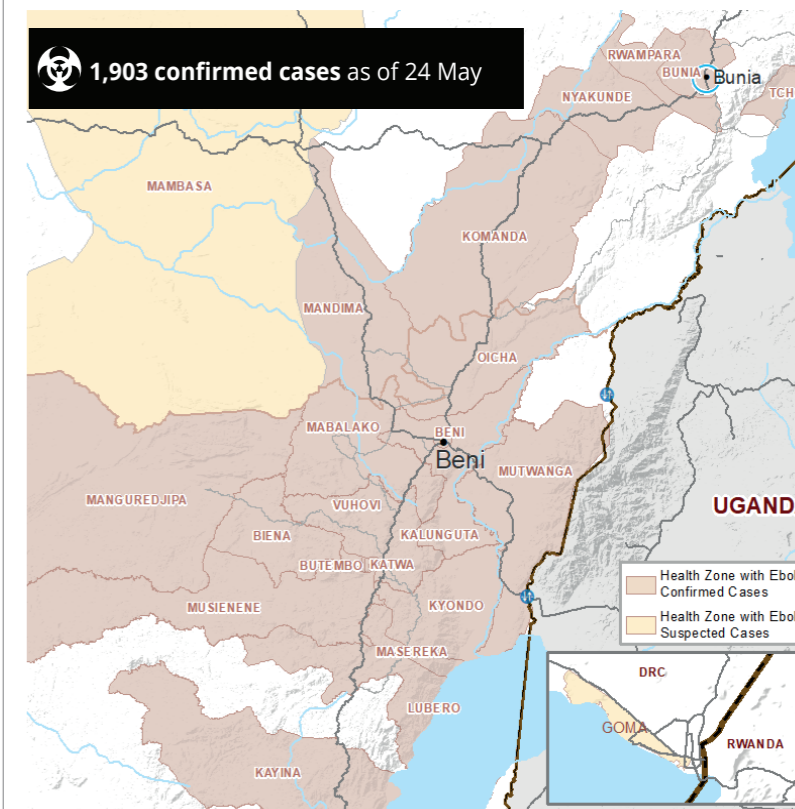
FUNDING

DR Congo Interim Country Strategic Plan (ICSP)

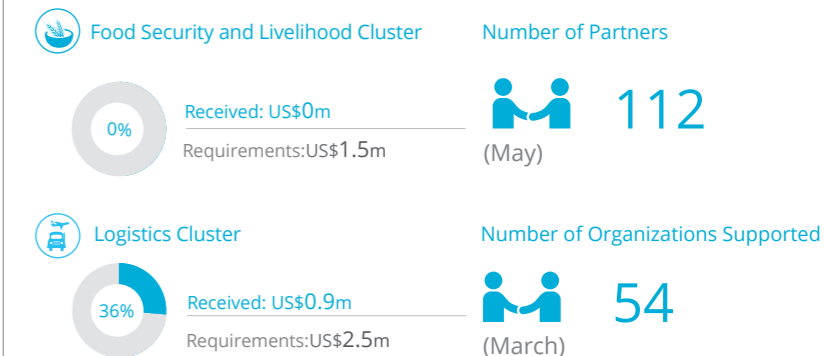
June - November 2019
US\$103.4m
Net funding requirement

2019 LEVEL 3 RESPONSE
REQUIREMENTS: US\$ 452.8

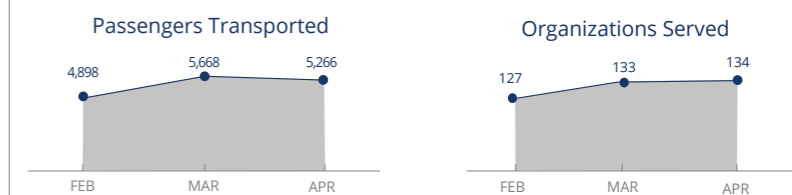
EBOLA AFFECTED HEALTH ZONES



WFP LED & SUPPORTED CLUSTERS



UN Humanitarian Air Service (UNHAS)



WFP LEVEL 3 EMERGENCY

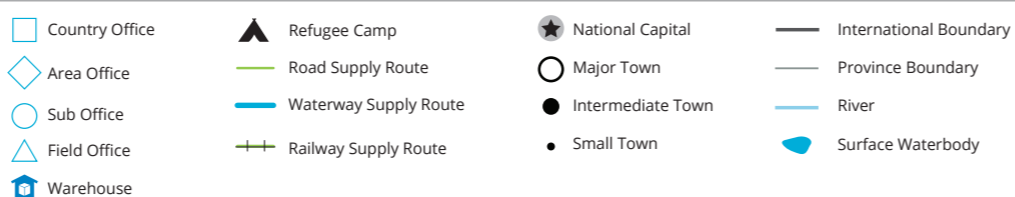
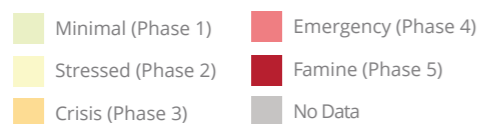
SINCE 06 OCTOBER 2017 (LEVEL 2 EMERGENCY SINCE 12 DEC 2013)

For more information, see the SITUATION REPORT and COUNTRY BRIEF
www.wfp.org/countries/congo-democratic-republic

2A Interim Country Strategic Plan (2018-2020)

Produced by the WFP Operations Centre (OPSCEN) jointly with Country Office and Regional Bureau Johannesburg. This dashboard is based on best available information at the time of production. Future updates may vary as new information becomes available.

IPC Food Security Classification (August 2018)



Sources: WFP, UNGIWG, GAUL, GLCSC, OCHA, UNHCR, IPC.
 The designations employed and the presentation of material in the map(s) do not imply the expression of any opinion on the part of WFP concerning the legal or constitutional status of any country, territory, city or sea, or concerning the delimitation of its frontiers or boundaries.
 © World Food Programme 2019.