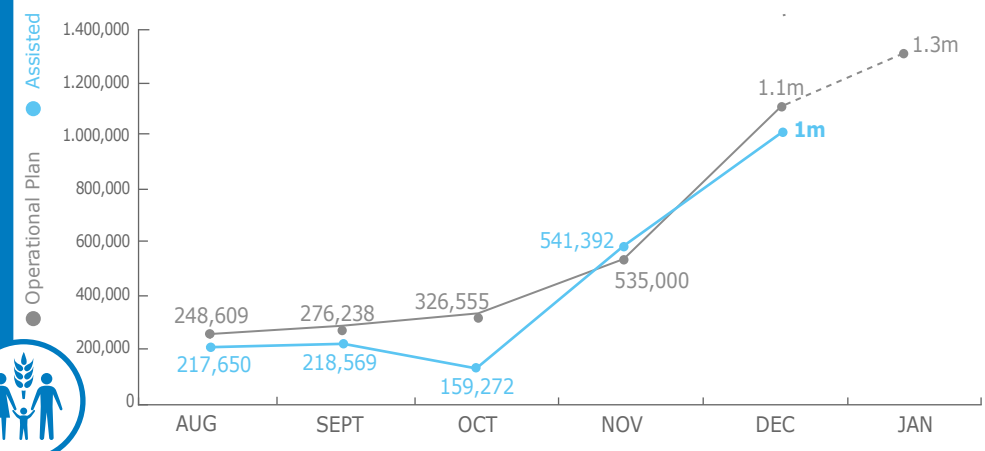
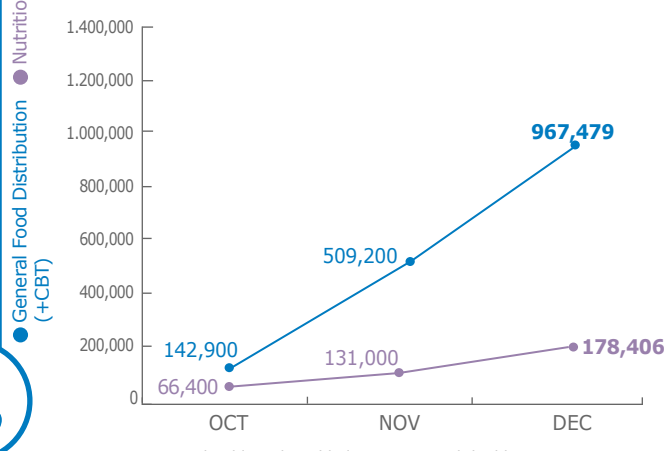


PEOPLE ASSISTED

Emergency Operation 200777

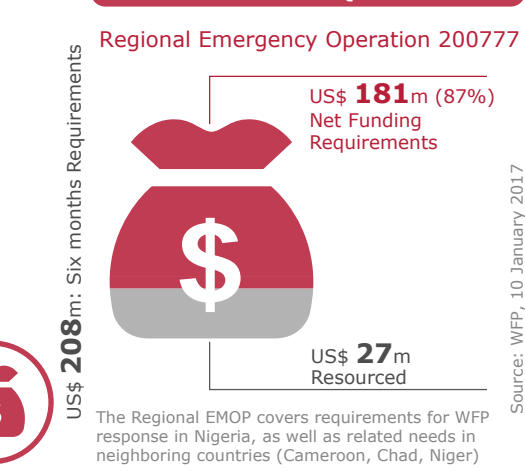


OPERATIONAL PROFILE



FUNDING

Jan - June 2017



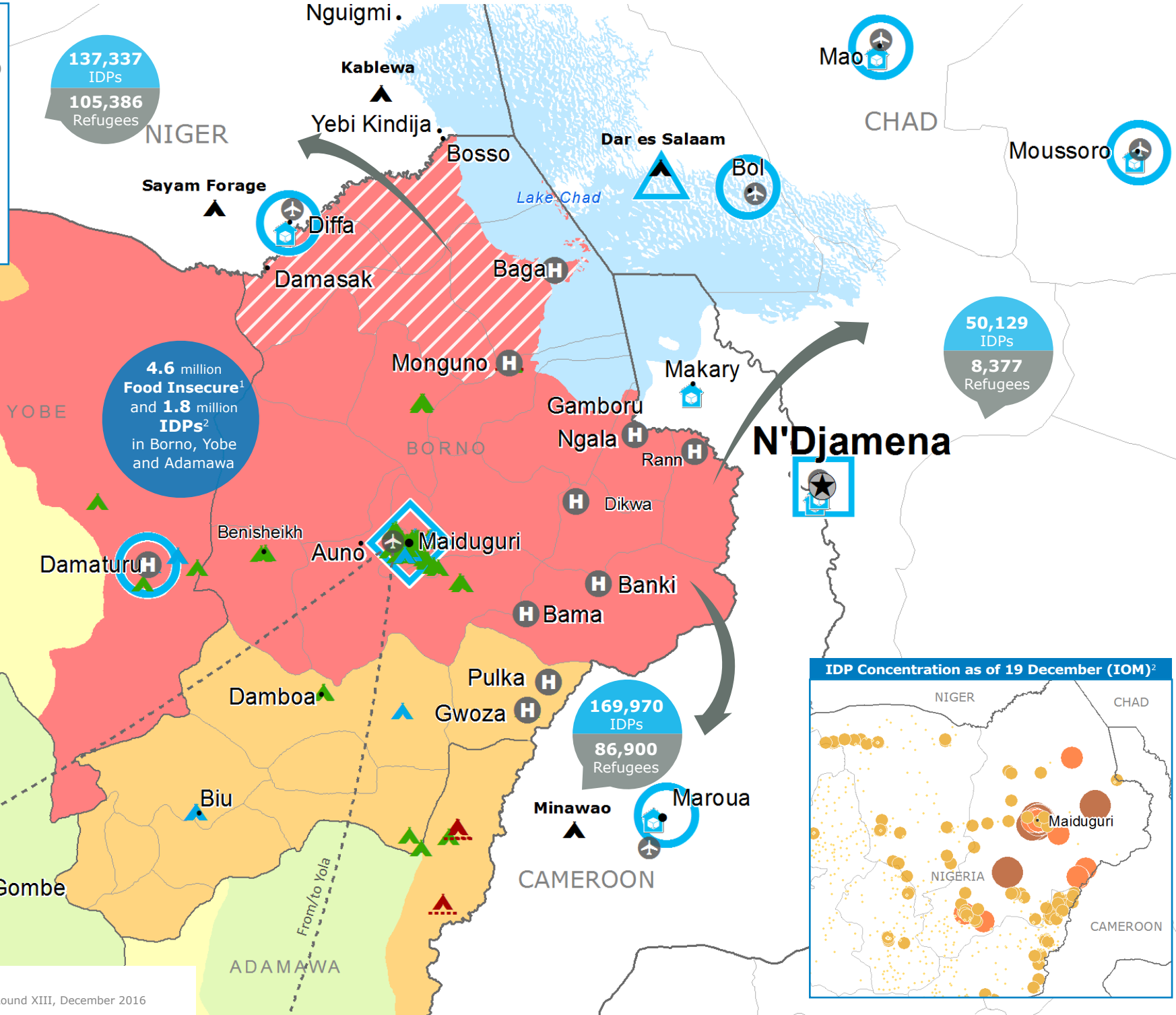
OPERATIONAL CHALLENGES

- Insecurity
- Humanitarian Access

Food Security Classification

(Cadre Harmonisé - October 2016)

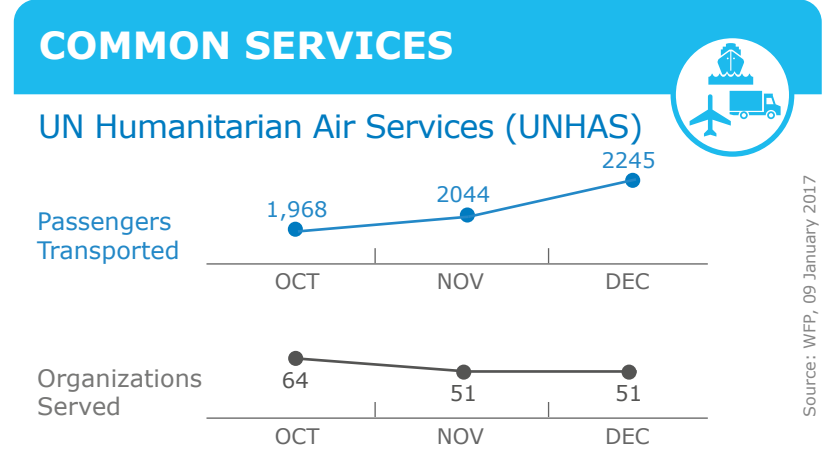
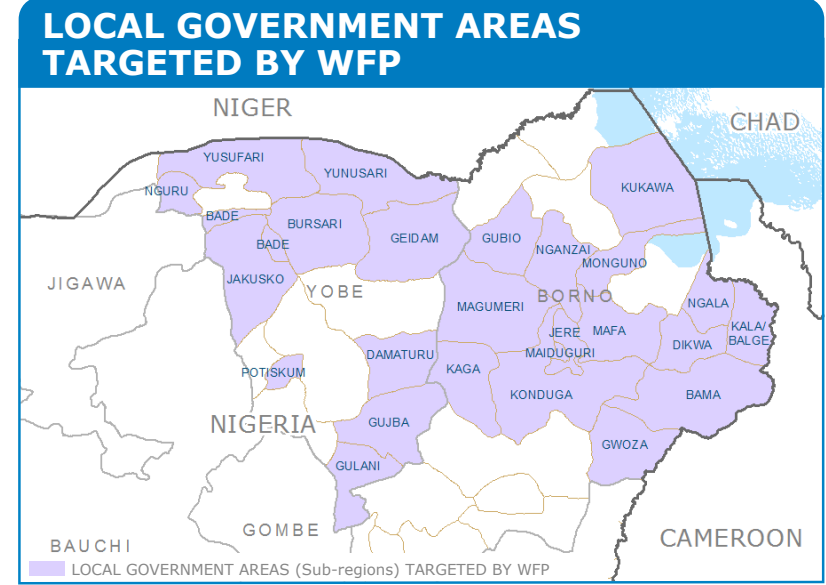
- Minimal (Phase 1)
- Stressed (Phase 2)
- Crisis (Phase 3)
- Emergency (Phase 4)
- Famine (Phase 5)
- Inaccessible areas



PROJECT RESOURCES: COMMON SERVICES

Special Operation 200834 UN Humanitarian Air Services (UNHAS) NIGERIA	Special Operation 201032 (Logistics and Emergency Telecommunication)
2016 Received: US\$ 19m	2016 Received: US\$ 2m
2017 Required: US\$ 12m	2017 Required: US\$ 10.1m

Source: WFP, 08 January 2017



WFP LEVEL 3 EMERGENCY

SINCE 11 AUGUST 2016

For more information, see the **SITUATION REPORT** and **COUNTRY BRIEF** www.wfp.org/countries/nigeria

2A Regional Emergency Operation 200777
documents.wfp.org/stellent/groups/public/documents/ep/WFP284303.pdf

1 Cadre Harmonisé October 2016
2 IOM Displacement Tracking Matrix, Round XIII, December 2016

- Country Office
- Area Office
- Sub Office
- Field Office
- UNHAS Connection
- Ad-Hoc Fixed-Wing Destination
- Ad-Hoc Rotary-Wing Destination
- UNHAS Route
- WFP Warehouse
- Refugee Camp
- IDPs Site Type
- IDP Camp
- IDP Collective Centre
- Transitional Centre
- Number of IDPs by Location as of December 2016 (IOM)
- National Capital
- Major Town
- Intermediate Town
- Small Town
- International Boundary
- Region Boundary

Sources: WFP, UNGIWG, GAUL, GLCSC, UNHCR, IOM, UNHCR Nigeria Displacement Dashboard June 2016

The designations employed and the presentation of material in the map(s) do not imply the expression of any opinion on the part of WFP concerning the legal or constitutional status of any country, territory, city or sea, or concerning the delimitation of its frontiers or boundaries. © World Food Programme 2017