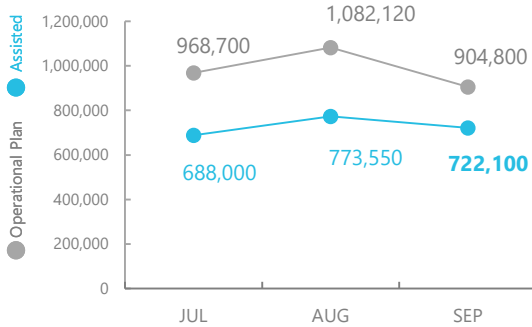


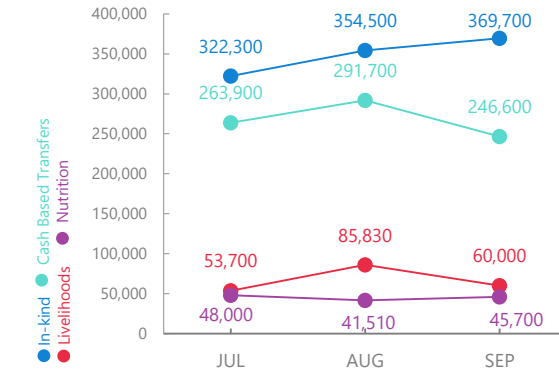
# Nigeria

## PEOPLE ASSISTED In Borno, Yobe and Adamawa States



SOURCE: WFP, 18 OCT 2019

## OPERATIONAL PROFILE By Activity



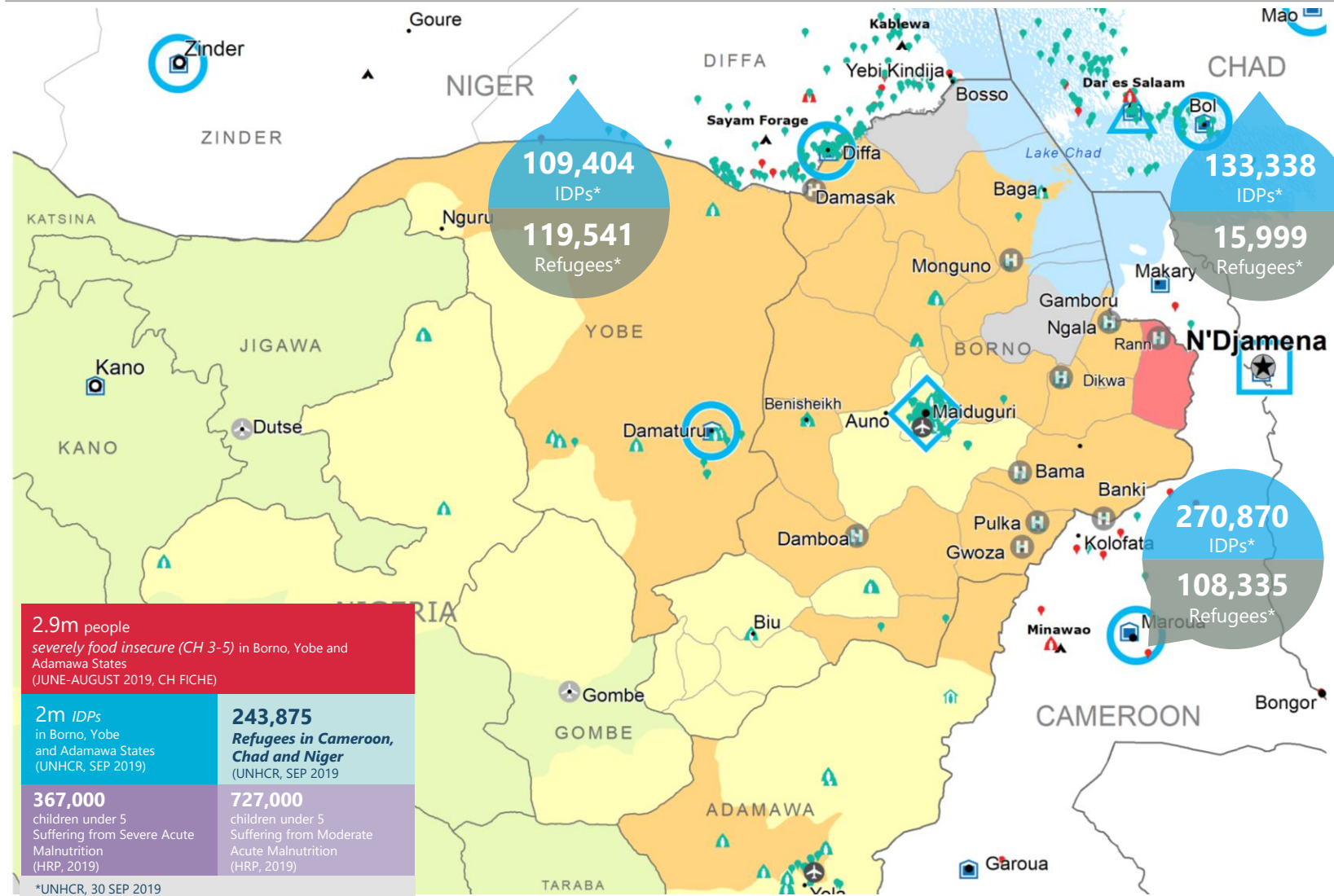
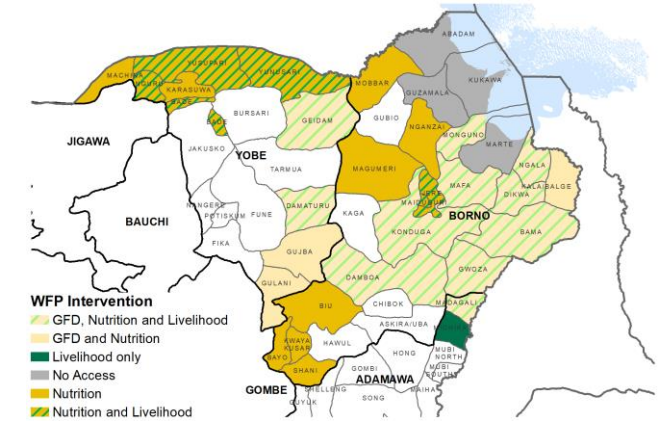
SOURCE: WFP, 25 OCT 2019

## FUNDING Nigeria Country Strategic Plan (CSP)

November 2019 – April 2020  
Net funding requirements

US\$77m

## WFP OPERATIONAL PRESENCE IN BORNO, YOBE AND ADAMAWA STATES



**2.9m people** severely food insecure (CH 3-5) in Borno, Yobe and Adamawa States (JUNE-AUGUST 2019, CH FICHE)

**2m IDPs** in Borno, Yobe and Adamawa States (UNHCR, SEP 2019)

**243,875 Refugees in Cameroon, Chad and Niger** (UNHCR, SEP 2019)

**367,000 children under 5** Suffering from Severe Acute Malnutrition (HRP, 2019)

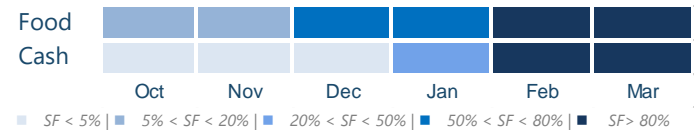
**727,000 children under 5** Suffering from Moderate Acute Malnutrition (HRP, 2019)

\*UNHCR, 30 SEP 2019

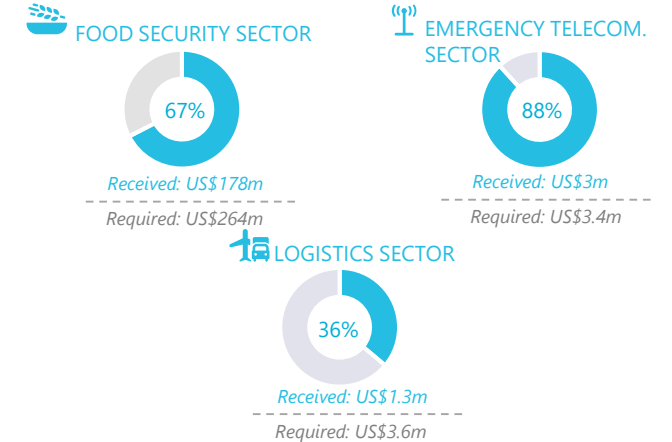
## AVERAGE MONTHLY FUNDING REQUIREMENTS

Food US\$ 9.6m | Cash US\$ 10.5m

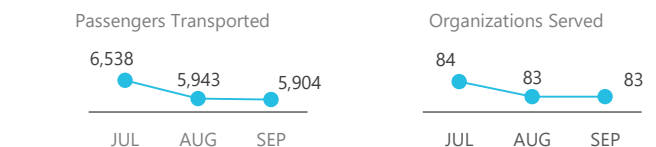
### EXPECTED SHORTFALLS



## WFP-LED AND CO-LED SECTORS



## UN HUMANITARIAN AIR SERVICES (UNHAS)



**WFP LEVEL 3 EMERGENCY**  
SINCE 11 AUGUST 2016

For more information, see the SITUATION REPORT and COUNTRY BRIEF  
<https://www.wfp.org/countries/nigeria>

Nigeria Country Strategic Plan  
<https://docs.wfp.org/api/documents/WFP-0000101930/download?ga=2.21171158-2010349590-1614781252-114077222-1558361645>

Produced by the WFP Operations Centre (OPSCEN) jointly with Country Office and Regional Bureau Dakar. This dashboard is based on best available information at the time of production. Future updates may vary as new information becomes available.

- CH Food Security Classification** (June - August 2019 Projection): No data, Crisis (Phase 3), Minimal (Phase 1), Emergency (Phase 4), Stressed (Phase 2), Famine (Phase 5)
- Country Office**: Country Office, Area Office, Sub Office, Field Office
- UNHAS Connection**: Ad-Hoc Fixed-Wing Destination, Ad-Hoc Rotary-Wing Destination, Warehouse
- IDP Camp**: IDP Center, IDP Location
- Refugee Camp**: Refugee Center, Refugee Location
- National Capital**: Major Town, Intermediate Town, Small town
- International Boundary**: Province boundary, River

Sources: WFP, UNGIWG, GAUL, GLCSC, OCHA, UNHCR.  
The designations employed and the presentation of material in the map(s) do not imply the expression of any opinion on the part of WFP the delimitation of its frontiers or boundaries. © World Food Programme 2018.