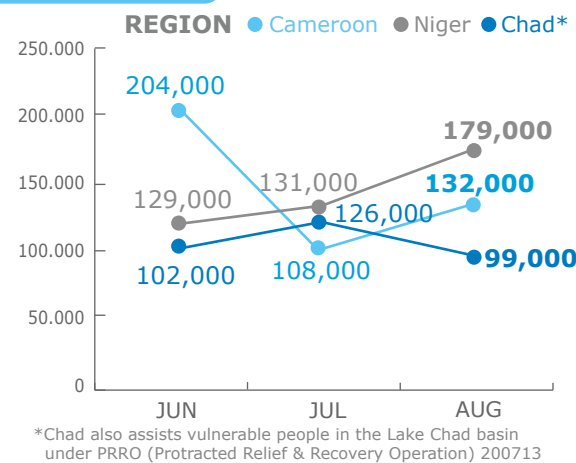
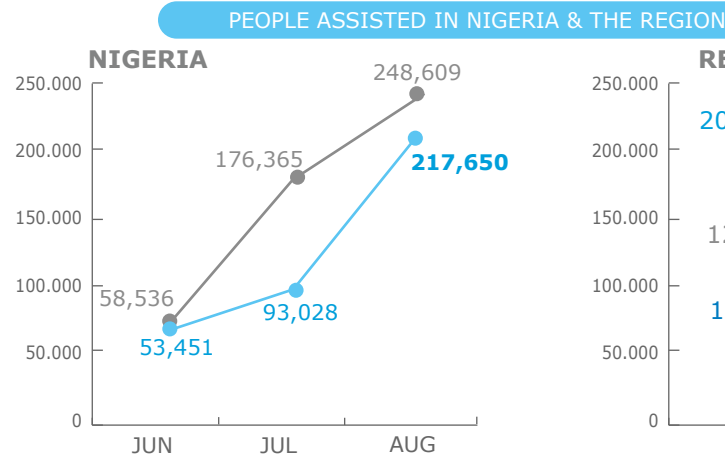


BENEFICIARIES

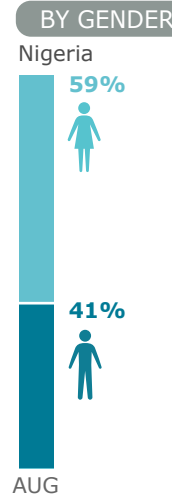
Reg. Emergency Operation 200777



Planned ● Assisted ●



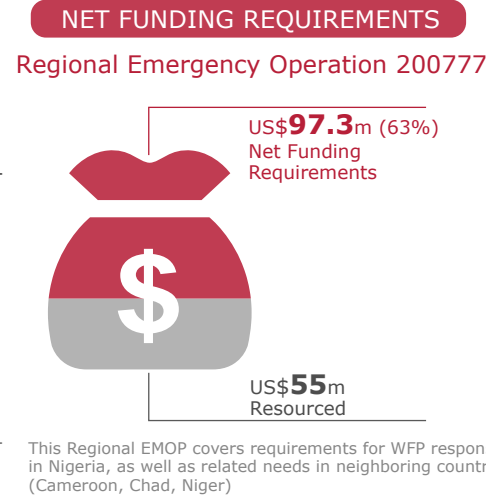
OPERATIONAL PROFILE



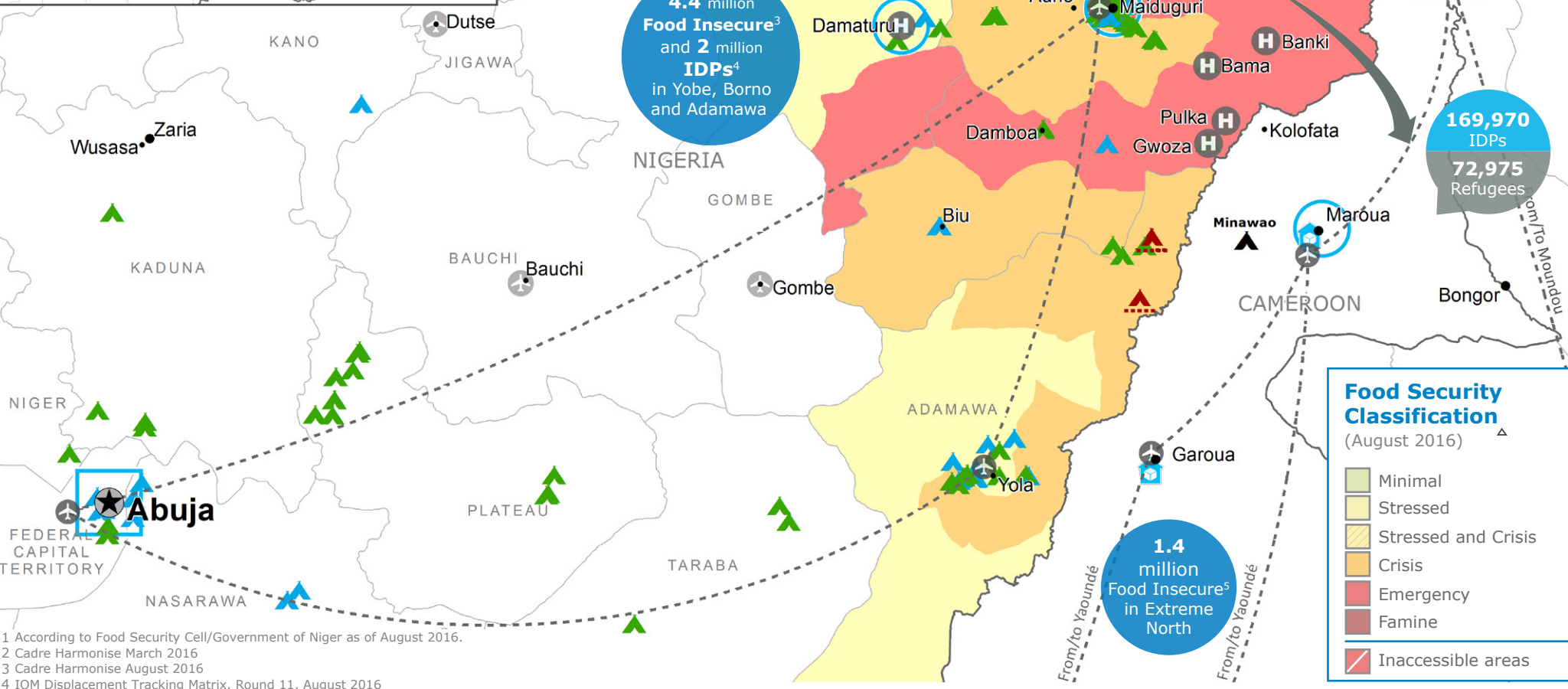
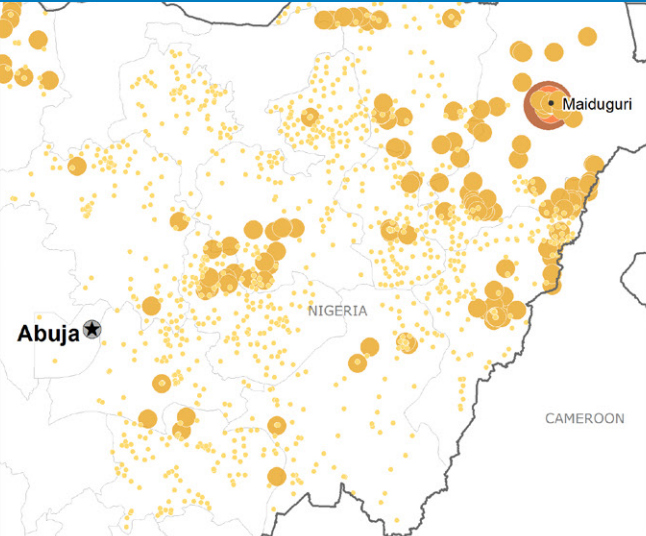
FUNDING

Aug 2016 - Jan 2017

US\$152.3m: Six months Requirements



IDP Concentration as of 31 August (IOM)



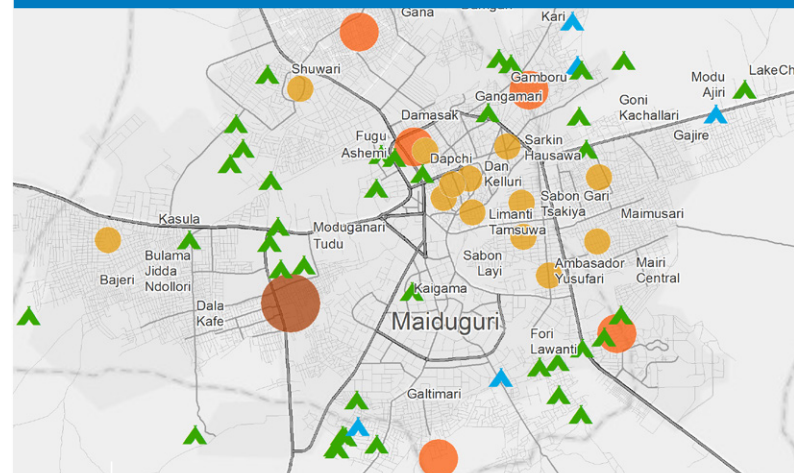
1 According to Food Security Cell/Government of Niger as of August 2016.
2 Cadre Harmonise March 2016
3 Cadre Harmonise August 2016
4 IOM Displacement Tracking Matrix, Round 11, August 2016
5 Emergency Food Security Assessment (EFSA) September 2015

Country Office	UNHAS Connection	UNHAS Route	IDPs Site Type	Number of IDPs in Hosted Communities - August 2015 (IOM)	National Capital	International Boundary
Sub Office	Ad-Hoc Fixed-Wing Destination	WFP Warehouse	IDP Camp	100,001 - 172,000	Major Town	Region Boundary
Field Office	Ad-Hoc Rotary-Wing Destination	Refugee Camp	IDP Collective Centre	5,001 - 100,000	Intermediate Town	
			Transitional Centre	1,001 - 5,000	Small Town	
				4 - 1,000		

2016 PROJECT RESOURCES: COMMON SERVICES

Special Operation	2016 Received	2016 Required	Special Operation	2016 Received	2016 Required
200834 (UNHAS NIGERIA)	61%	US\$6m	200792* (UNHAS NIGER)	79%	US\$8m
200895* (UNHAS CAMEROON)	72%	US\$3m	200785* (UNHAS CHAD)	71%	US\$18m

IDP CAMPS AND HOST COMMUNITIES IN MAIDUGURI AREA



OPERATIONAL CHALLENGES

- Insecurity
- Humanitarian Access
- Resources
- Economic Volatility
- Limited Partners

WFP LEVEL 3 EMERGENCY

SINCE 11 AUGUST 2016

For more information, see the **SITUATION REPORT** and **COUNTRY BRIEF**
<http://www.wfp.org/countries/nigeria>

2A REGIONAL EMOP 200777
<http://documents.wfp.org/stellent/groups/public/documents/ep/WFP284303.pdf>

Produced by the WFP **Operations Centre (OPSCEN)** jointly with Country Office and Regional Bureau Dakar
This dashboard is based on best available information at the time of production. Future updates may vary as new information becomes available.

Sources: WFP, UNGIWG, GAUL, GLCSC, UNHCR, IOM. UNHCR Nigeria Displacement Dashboard June 2016
The designations employed and the presentation of material in the map(s) do not imply the expression of any opinion on the part of WFP concerning the legal or constitutional status of any country, territory, city or sea, or concerning the delimitation of its frontiers or boundaries. © World Food Programme 2016

