



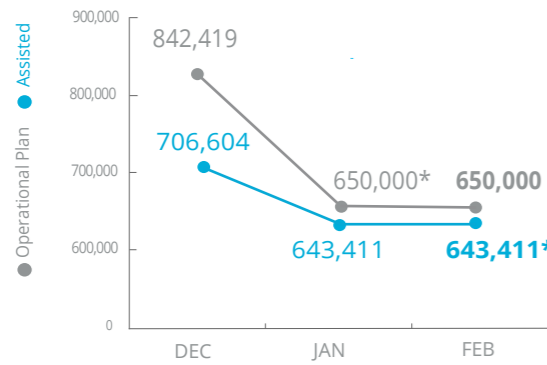
World Food Programme

Emergency Dashboard | March 2019

# Nigeria

## PEOPLE ASSISTED

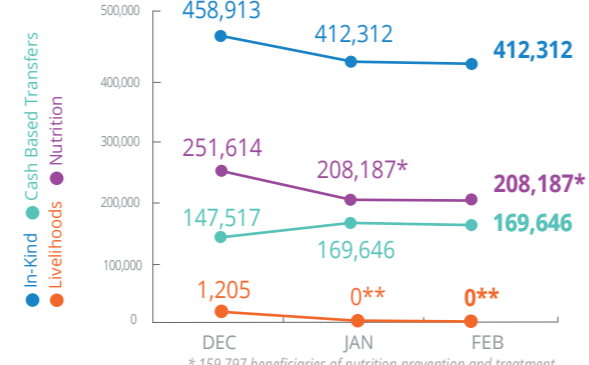
Borno, Yobe and Adamawa States



\*Operational Plan revised under the Country Strategic Plan  
 \*\*Two-month rations distributed in Jan to cover Jan and Feb needs

## OPERATIONAL PROFILE

by activity



\* 159,797 beneficiaries of nutrition prevention and treatment and 48,400 of Multi-Sector Nutrition Prevention activities  
 \*\* Preparatory activities are on-going.

## FUNDING

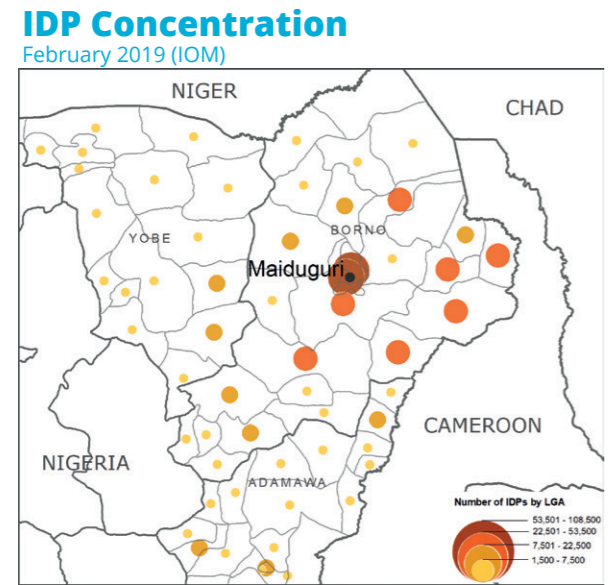
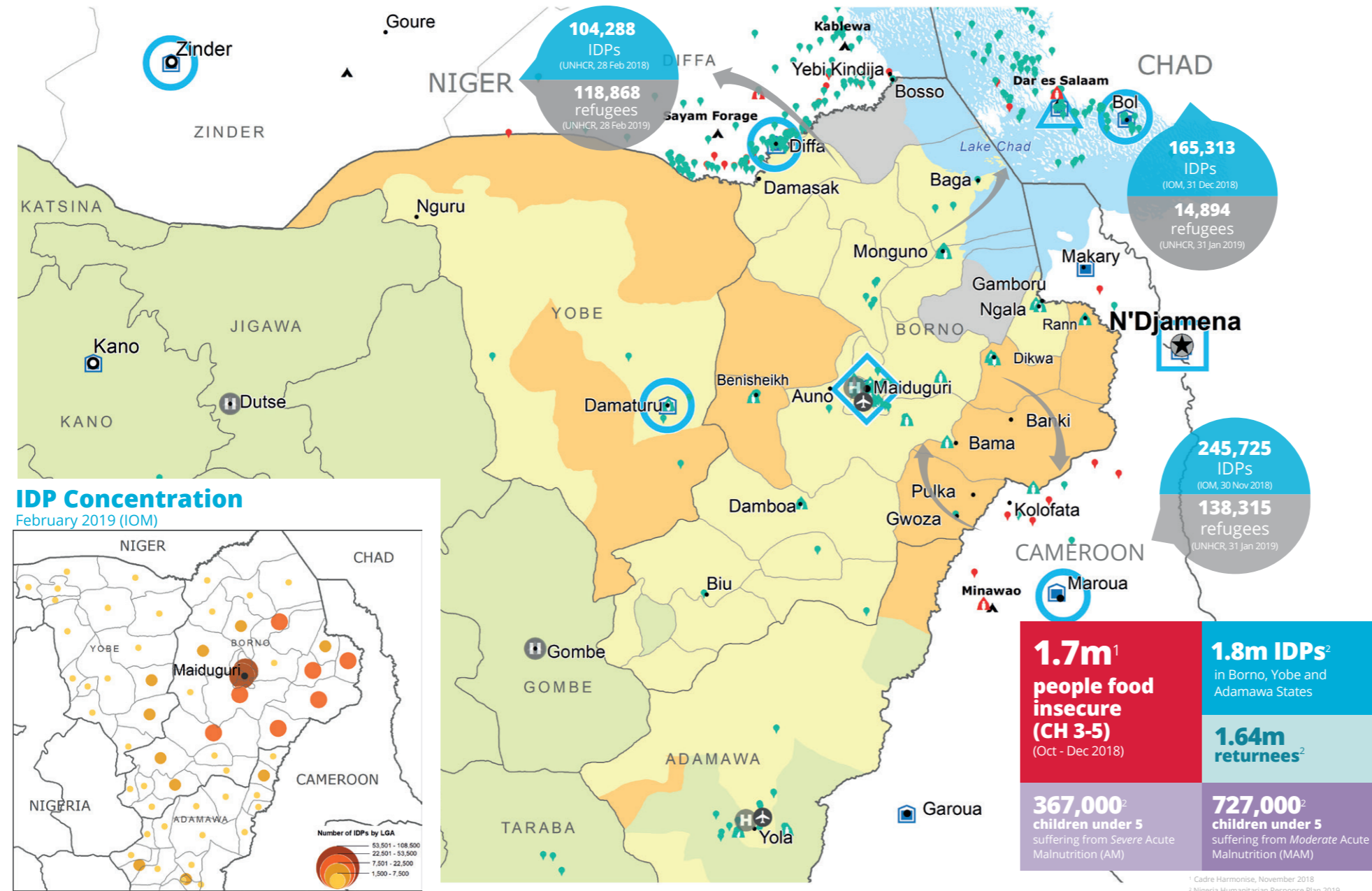
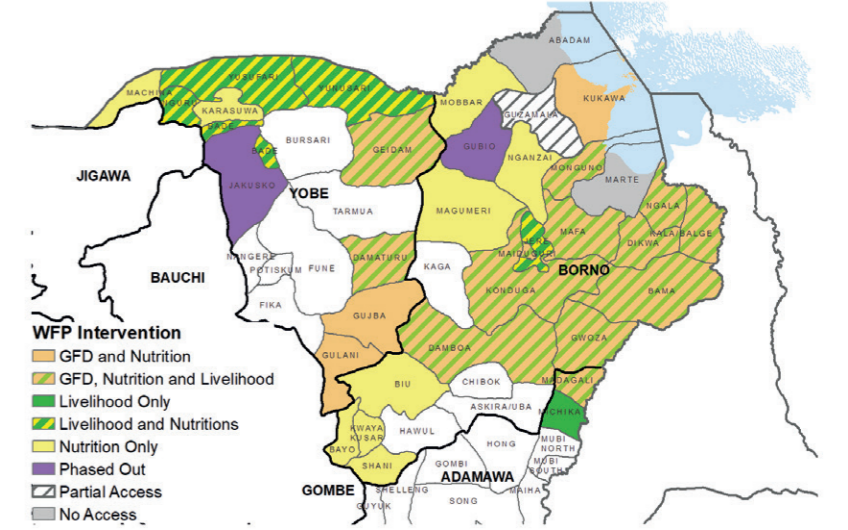
Nigeria Country Strategic Plan (CSP)

April - September 2019  
**Net funding requirement**  
**USD 58.1m**

**2019 LEVEL 3 RESPONSE**  
**REQUIREMENTS: USD 242.7m**

## WFP OPERATIONAL PRESENCE

GFD, NUTRITION AND LIVELIHOOD INTERVENTIONS IN ADAMAWA, BORNO AND YOBE STATES  
January to September 2019



**1.7m<sup>1</sup> people food insecure (CH 3-5)** (Oct - Dec 2018)

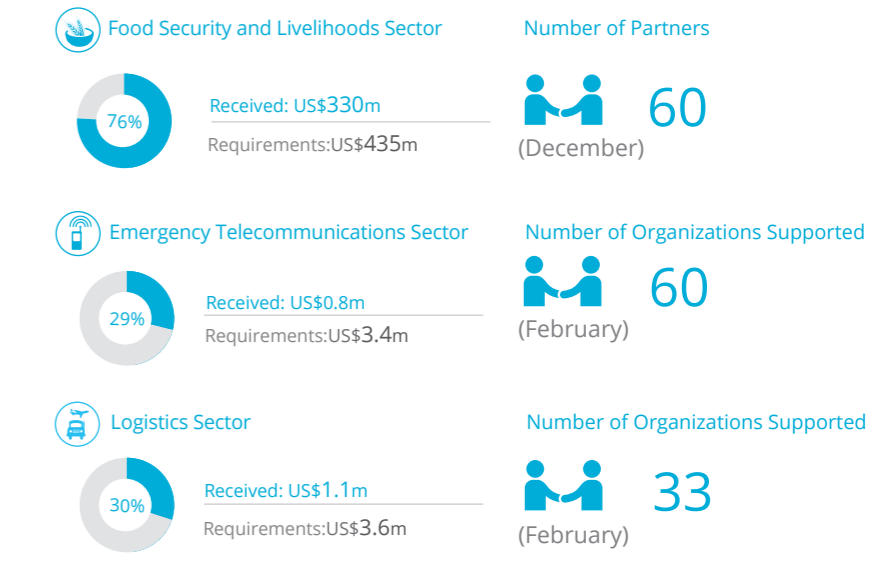
**1.8m IDPs<sup>2</sup> in Borno, Yobe and Adamawa States**

**1.64m returnees<sup>2</sup>**

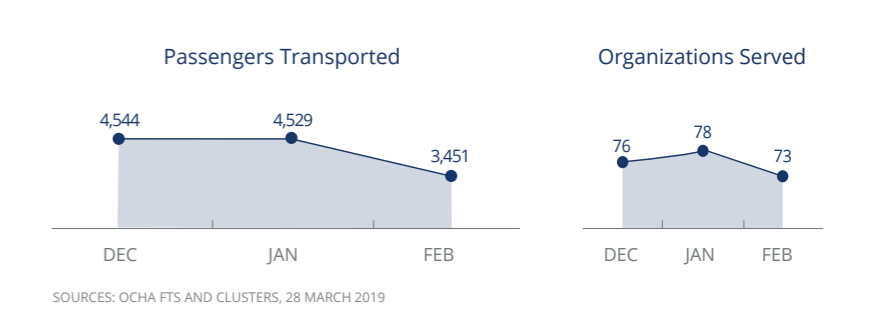
**367,000<sup>2</sup> children under 5 suffering from Severe Acute Malnutrition (AM)**

**727,000<sup>2</sup> children under 5 suffering from Moderate Acute Malnutrition (MAM)**

## WFP-LED AND SUPPORTED SECTORS



## UN Humanitarian Air Service (UNHAS)



**WFP LEVEL 3 EMERGENCY**  
 SINCE 11 AUGUST 2016

For more information, see the [SITUATION REPORT](#) and [COUNTRY BRIEF](#) [www.wfp.org/countries/nigeria](http://www.wfp.org/countries/nigeria)

**2A Regional Emergency Operation 200777**  
<http://documents.wfp.org/stellent/groups/public/documents/ep/WFP284303.pdf>

**IPC Food Security Classification** (Projected October - December 2018)

- No data
- Minimal (Phase 1)
- Stressed (Phase 2)
- Crisis (Phase 3)
- Emergency (Phase 4)
- Famine (Phase 5)

**Country Office**

- Country Office
- Area Office
- Sub Office
- Field Office

**UNHAS Connection**

- Ad-Hoc Fixed-Wing Destination
- Ad-Hoc Rotary-Wing Destination
- Warehouse

**IDP Camp**

- IDP Center
- IDP Location

**Refugee Camp**

- Refugee Center
- Refugee Location

**National Capital**

- National Capital
- Major Town
- Intermediate Town
- Small town

**International Boundary**

- International Boundary
- Province boundary
- River

Sources: WFP, UNGIWI, GAUL, GLCSC, OCHA, UNHCR.

The designations employed and the presentation of material in the map(s) do not imply the expression of any opinion on the part of WFP concerning the legal or constitutional status of any country, territory, city or sea, or concerning the delimitation of its frontiers or boundaries.

© World Food Programme 2018.

INTERNAL USE ONLY