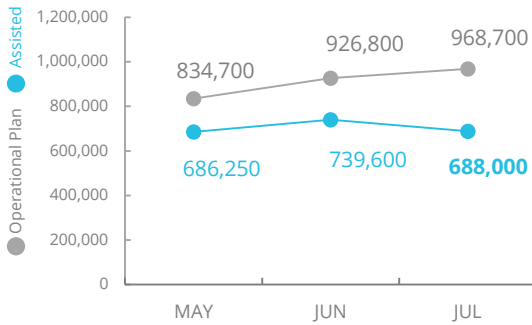


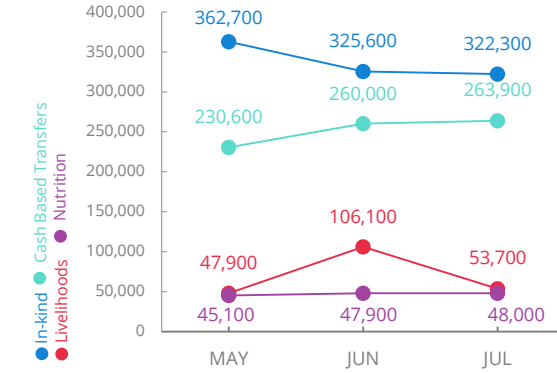
Nigeria

PEOPLE ASSISTED In Borno, Yobe and Adamawa States



SOURCE: WFP, 27 AUG 2019

OPERATIONAL PROFILE By Activity



FUNDING Nigeria Country Strategic Plan (CSP)

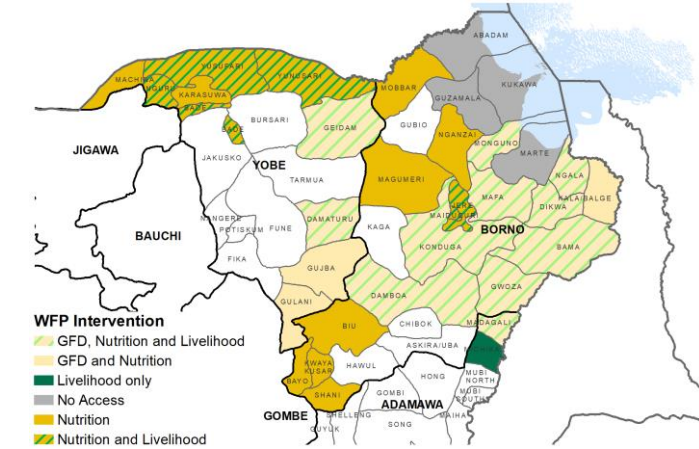
August 2019 - January 2020
Net funding requirements
us\$117.6m

2019 LEVEL 3 RESPONSE
Requirements: USD 242.7m
Contributions: USD 202.2m

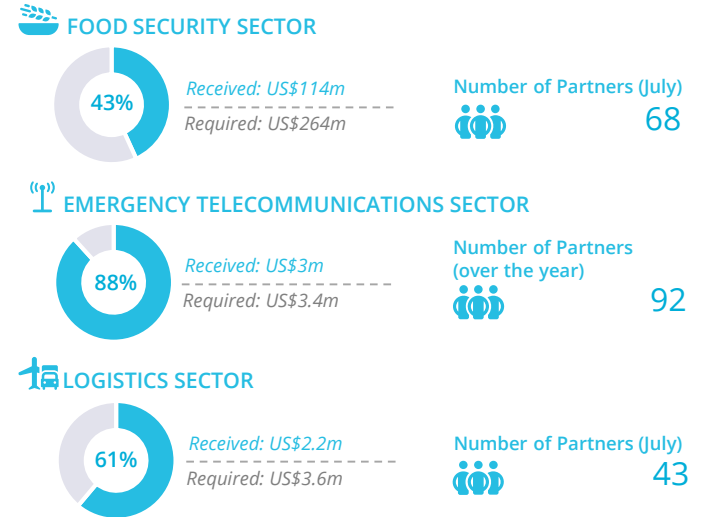
83%

SOURCE: WFP, 30 AUG 2019

WFP OPERATIONAL PRESENCE IN BORNO, YOBE AND ADAMAWA STATES

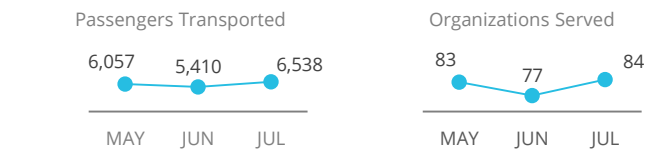


WFP-LED AND SUPPORTED SECTORS



SOURCE: CLUSTERS, 27 AUG 2019

UN HUMANITARIAN AIR SERVICES (UNHAS)



SOURCE: WFP, 27 AUG 2019

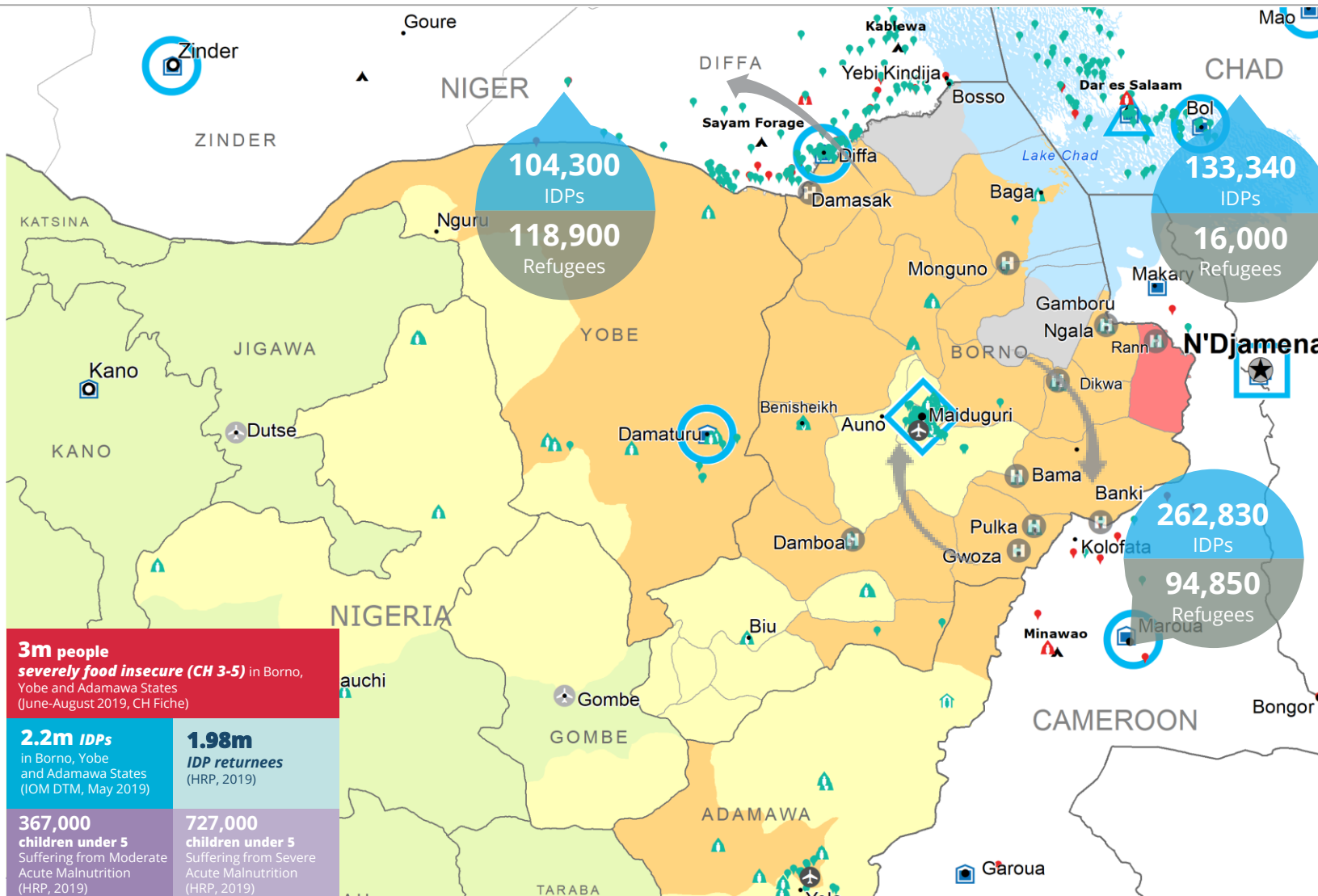
WFP LEVEL 3 EMERGENCY

SINCE 11 AUGUST 2016
IASC LEVEL 3 EMERGENCY SINCE AUGUST 2016

For more information, see the SITUATION REPORT and COUNTRY BRIEF
<https://www1.wfp.org/countries/nigeria>

Nigeria Country Strategic Plan
<https://docs.wfp.org/api/documents/WFP-0000101930/download.pdf?ga=2.21121158.2010349590.1564781252.114077222.1558363545>

Produced by the WFP Operations Centre (OPSCEN) jointly with Country Office and Regional Bureau Dakar. This dashboard is based on best available information at the time of production. Future updates may vary as new information becomes available.



3m people severely food insecure (CH 3-5) in Borno, Yobe and Adamawa States (June-August 2019, CH Fiche)

2.2m IDPs in Borno, Yobe and Adamawa States (IOM DTM, May 2019)

1.98m IDP returnees (HRP, 2019)

367,000 children under 5 Suffering from Moderate Acute Malnutrition (HRP, 2019)

727,000 children under 5 Suffering from Severe Acute Malnutrition (HRP, 2019)



Sources: WFP, UNGIWG, GAUL, GLCSC, OCHA, UNHCR.

The designations employed and the presentation of material in the map(s) do not imply the expression of any opinion on the part of WFP concerning the legal or constitutional status of any country, territory, city or sea, or concerning the delimitation of its frontiers or boundaries. © World Food Programme 2018.