

# Induction Session for Members and Observers of the WFP Executive Board

15 January 2018

## Working in Partnership



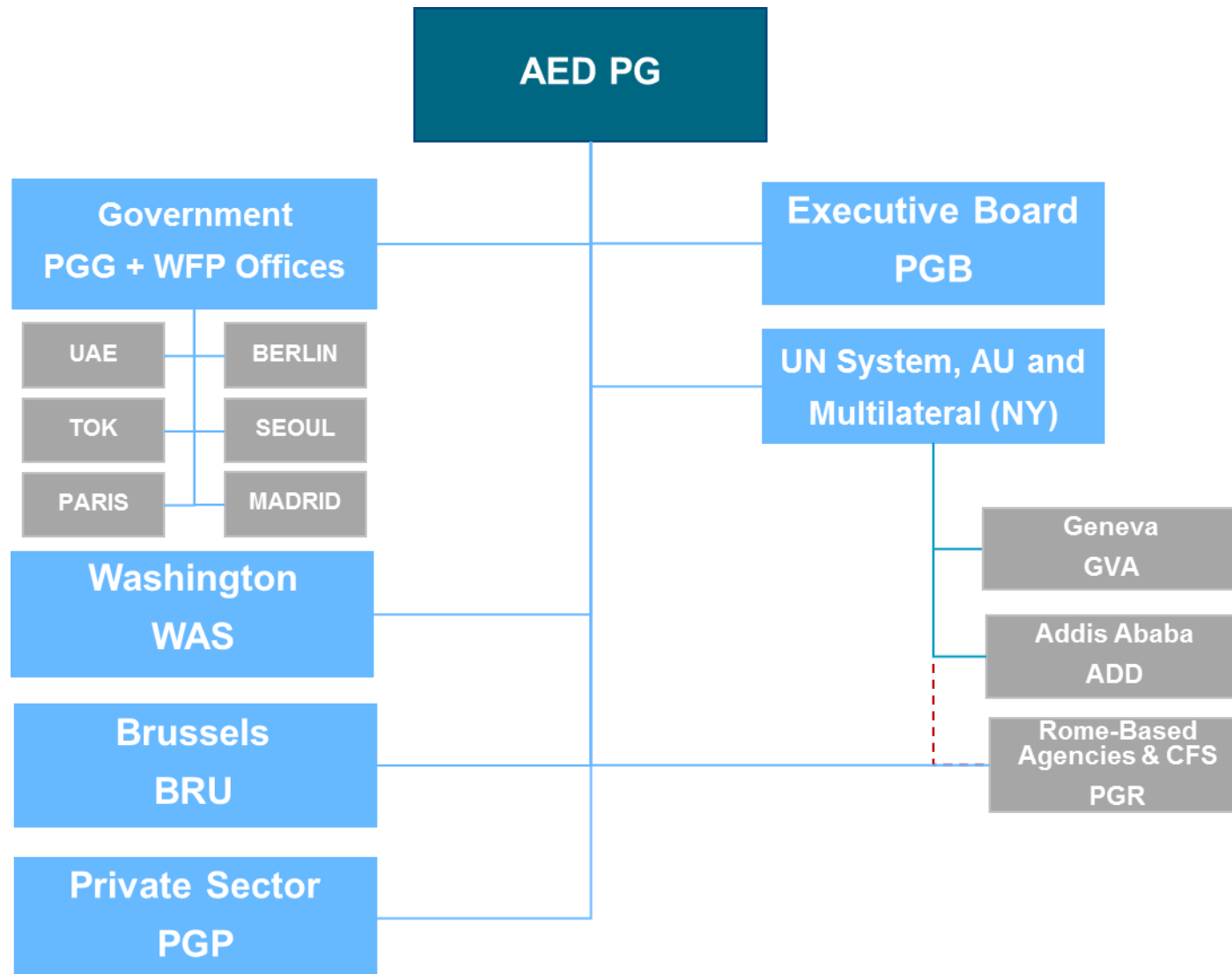
**World Food Programme**

# Agenda Items

---

- **Organigram**
- **Partnerships and Governance (PG) Department's vision**
- **WFP's Corporate Partnership Strategy**
- **WFP Definition of Partnership**
- **WFP Partners**
- **Resource Mobilization Results in 2017**

# Organigram



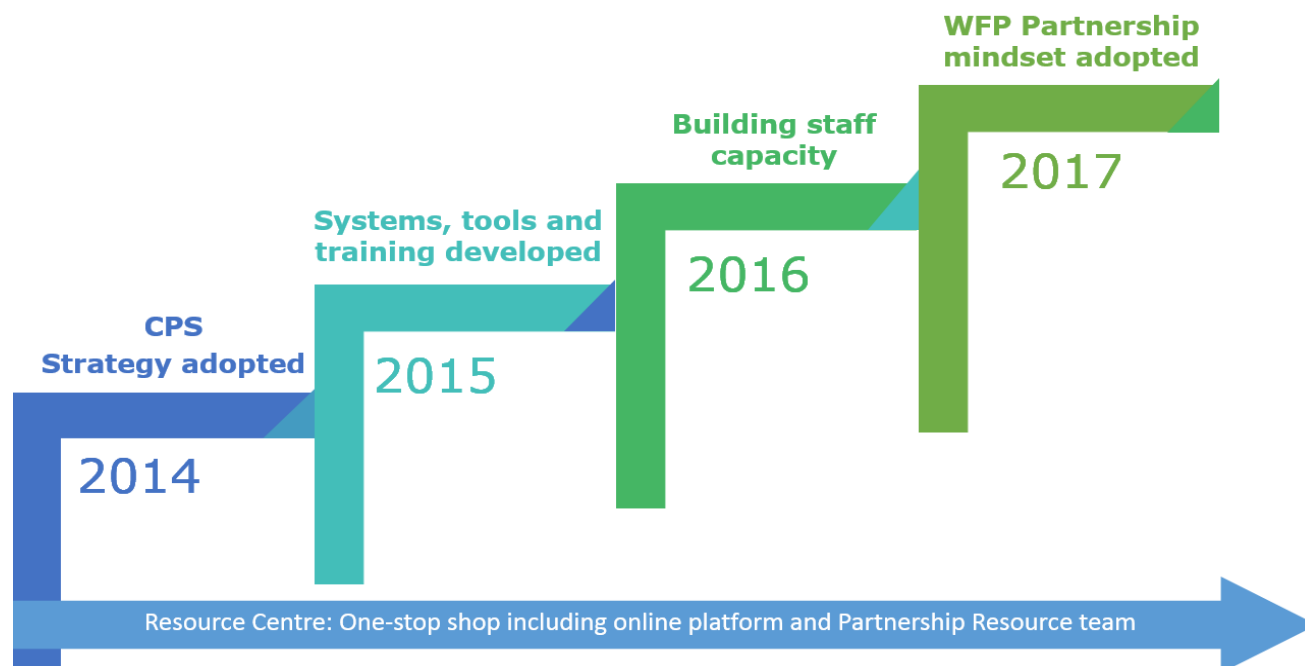
## **PG's vision**

---

**PG provides leadership and expertise to WFP's global partnership and resource mobilization efforts, ensuring that WFP gets maximum resources to fully meet the needs of the people we serve, in order to support Member States in achieving Zero Hunger and Agenda 2030.**

# WFP Corporate Partnership Strategy (CPS)

- Adopted by the Executive Board June 2014
- Provides WFP's definition and principles of partnership
- Promotes a strategic approach to partnering and communicates WFP's value as a partner



# WFP Definition of Partnership

---

**“Collaborative relationships between actors that achieve better outcomes for the people we serve by:**

- *Combining and leveraging complementary resources of all kinds;***
- *Working together in a transparent, equitable and mutually beneficial way;***
- *Sharing risks, responsibilities and accountability.***

# WFP Partners

## **Governments**

Government and Host Governments

## **Private Sector**

Additional funding and valuable expertise (transport, food, information and communications technology, logistics, finance and human resources)

## **NGOs**

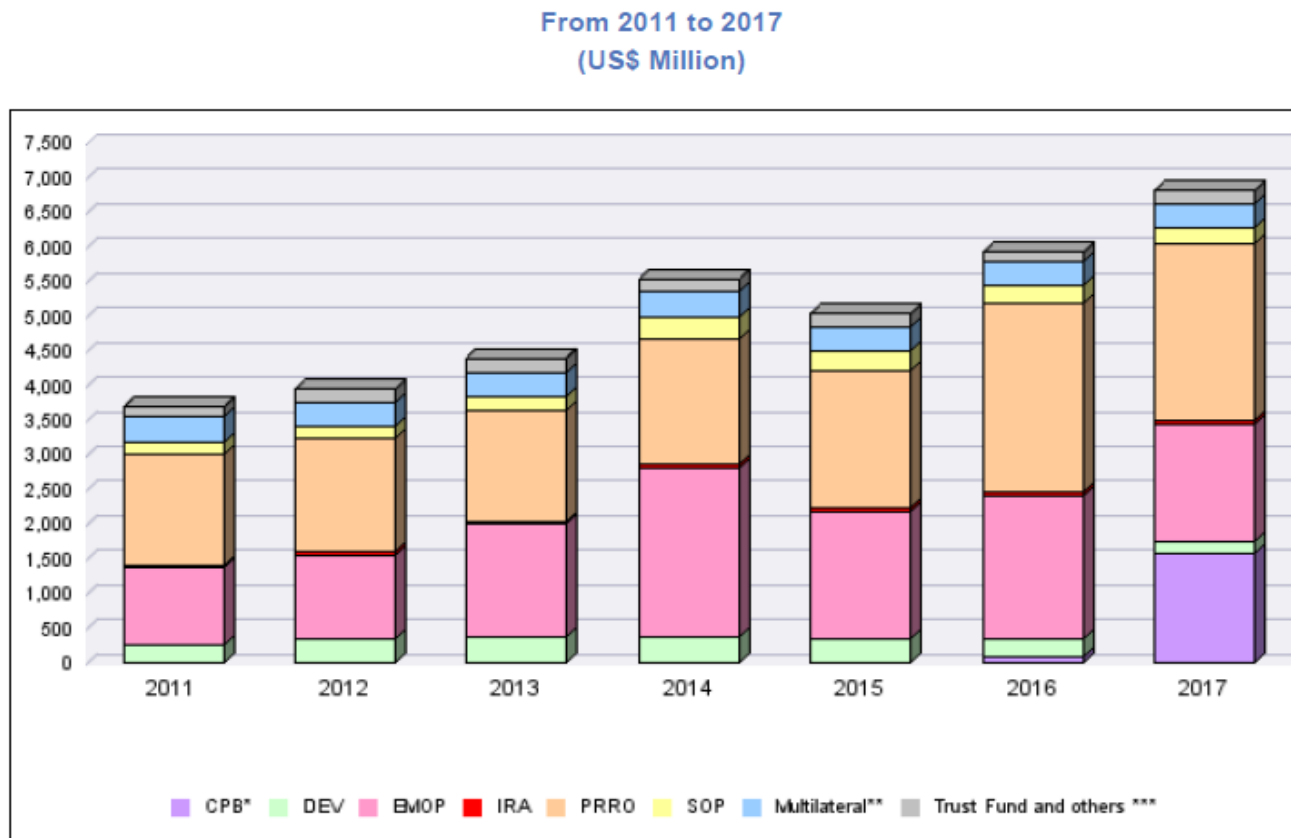
Local cultural knowledge  
Operational Capacity

## **UN System – Rome-Based Agencies**

UN Reform; Technical advice and non-food resources  
in both crises and development situations

# Resource Mobilization Results in 2017

As of 7 January 2018, WFP has received **USD6.8 billion\*** of confirmed contributions in 2017 from 91 government donors as well as private sector and other funding sources (Financial Institutions, Private Sector, Pooled funding).



Note(\*): Multilateral funds with no programme category specified

Note(\*\*): Contributions to Special Accounts, General Fund and pending allocation



# Partnerships motto

---

**If you want to travel fast, travel alone.  
If you want to travel far, travel  
together.**