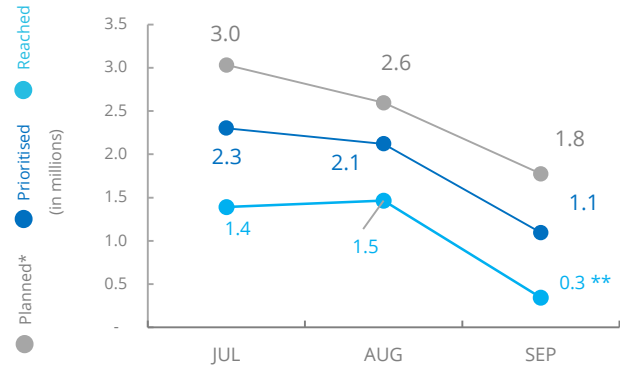


Central Sahel



PEOPLE ASSISTED Across Burkina Faso, Mali and Niger



SOURCE: WFP, 25 SEPT 2019 * Needs based planning ** Provisional figures



FUNDING Burkina Faso, Mali and Niger Country Strategic Plans

October 2019 – March 2020
Net funding requirements (needs based)

BURKINA FASO	us\$34.8m
MALI	us\$58.6m
NIGER	us\$38.4m

Total: us\$131.8m

SOURCE: WFP, 27 SEPT 2019

EXPECTED PIPELINE BREAKS

SOURCE: WFP, 25 SEP 2019

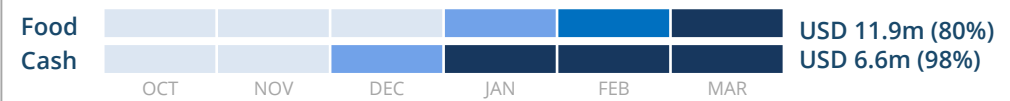
BURKINA FASO



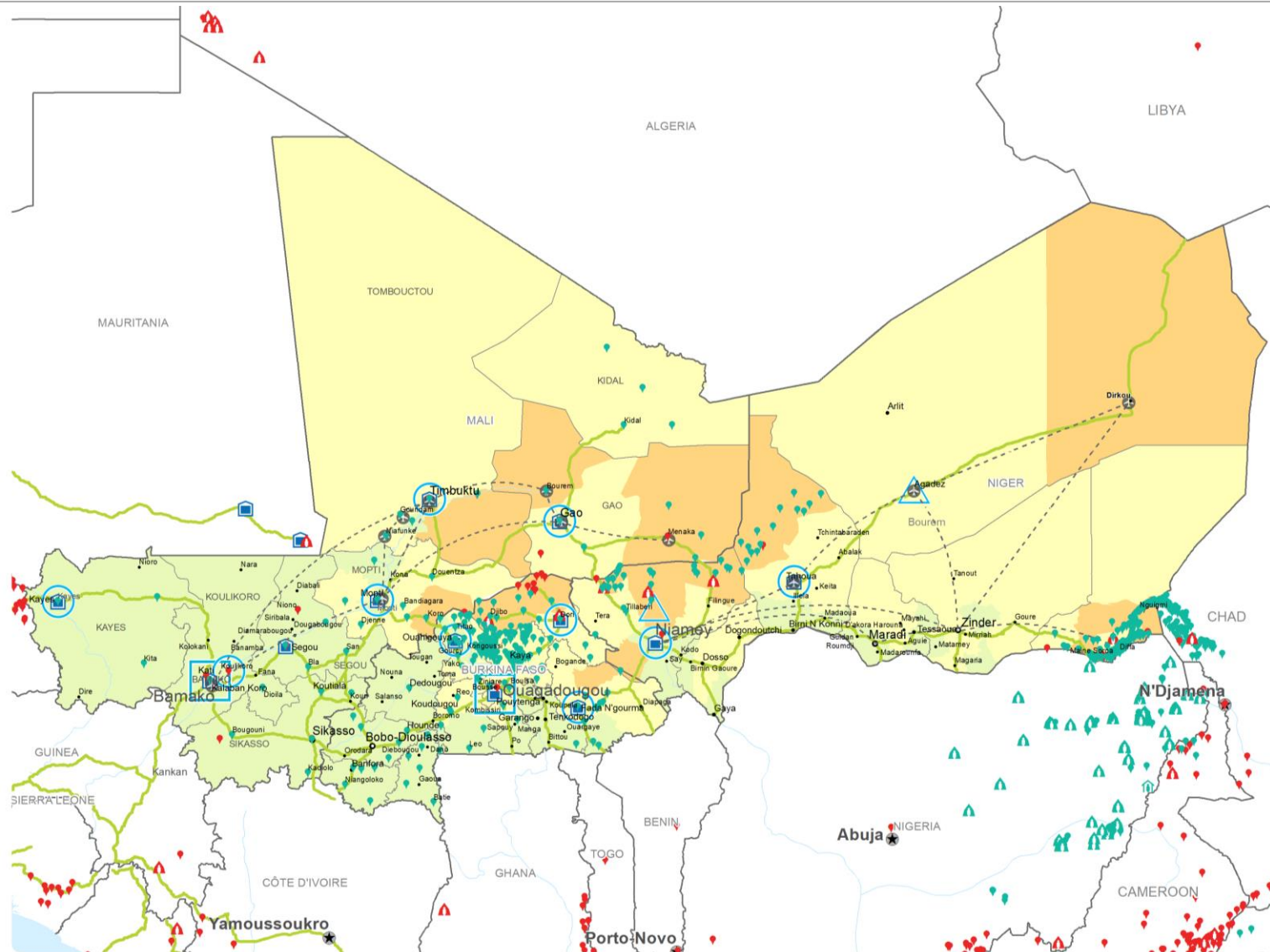
MALI



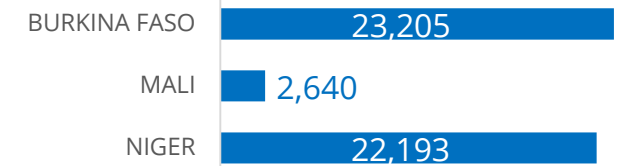
NIGER



Monthly shortfall: SF < 5% | 5% < SF < 20% | 20% < SF < 50% | 50% < SF < 80% | SF > 80%



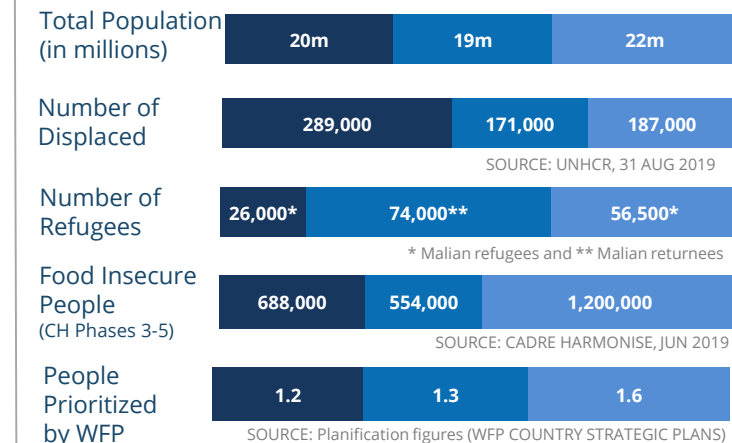
FOOD REQUIREMENTS 48k MT in total (Crisis Response Component only)



CASH REQUIREMENTS USD 44m in total (Crisis Response Component only)



KEY FIGURES



WFP LEVEL 3 EMERGENCY

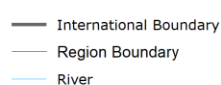
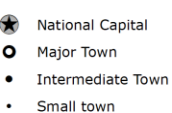
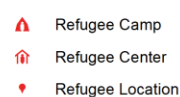
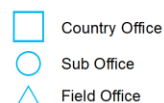
SINCE 09 SEPTEMBER 2019
REGIONAL LEVEL 3 EMERGENCY COVERING WFP OPERATIONS IN BURKINA FASO, MALI AND NIGER

For more information, see the SITUATION REPORT and COUNTRY BRIEF
<https://opweb.wfp.org/emergencies/407>

Produced by the WFP Operations Centre (OPSCEN) jointly with Country Office and Regional Bureau Dakar. This dashboard is based on best available information at the time of production. Future updates may vary as new information becomes available.

CH Food Security Classification

June - August 2019 Projection



Sources: WFP, UNGIWG, GAUL, GLCSC, OCHA, UNHCR.

The designations employed and the presentation of material in the map(s) do not imply the expression of any opinion on the part of WFP concerning the legal or constitutional status of any country, territory, city or sea, or concerning the delimitation of its frontiers or boundaries. © World Food Programme 2019.