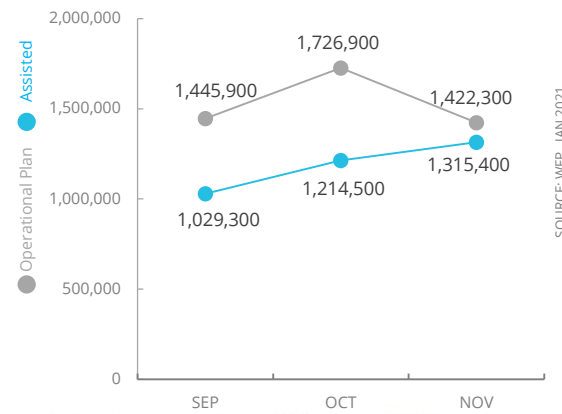


Democratic Republic of Congo

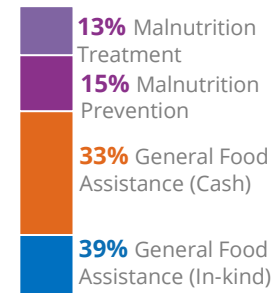
PEOPLE ASSISTED

DR Congo Interim Country Strategic Plan

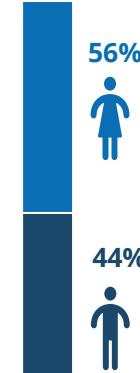


OPERATIONAL PROFILE

By Activity



By Gender



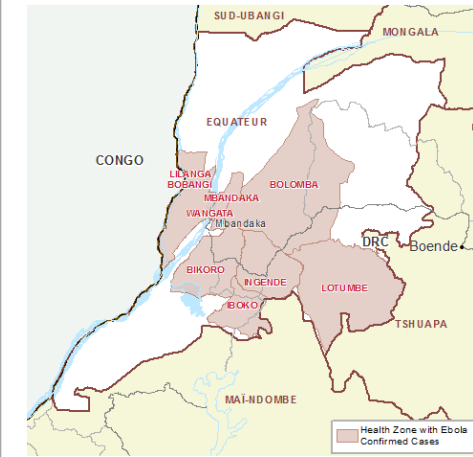
COVID-19 OPERATIONAL IMPACT

Status WFP Response adjusted

- Extended distribution timelines
- Crowd control and social distancing measures at distribution sites
- Mandatory hygiene measures at distribution sites
- School feeding through take home rations

✔ Ongoing
 ! Partially Suspended
 ✘ Suspended

EBOLA OUTBREAK IN EQUATEUR PROVINCE (As of 18 Nov)



CASES
 130 cases
 55 deaths
 75 survivors

11th DRC Ebola outbreak was officially declared over on 18 November 2020

FUNDING

DR Congo Country Strategic Plan (CSP)

January 2021 – June 2021

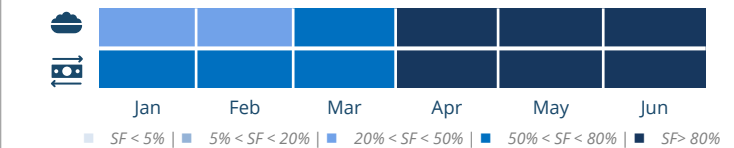
Net funding requirements
US\$191m

2020 LEVEL 3 RESPONSE
Requirements **US\$ 662.5m**

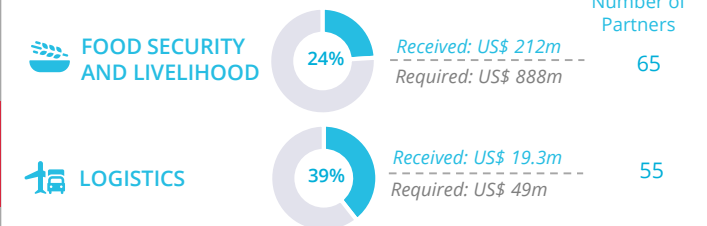
AVERAGE MONTHLY FUNDING REQUIREMENTS (US\$)

39.3m (Operational Plan) vs 20.4m (Interim Country Strategic Plan)

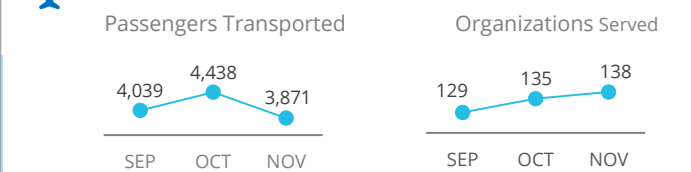
EXPECTED SHORTFALLS



WFP-LED AND SUPPORTED CLUSTERS



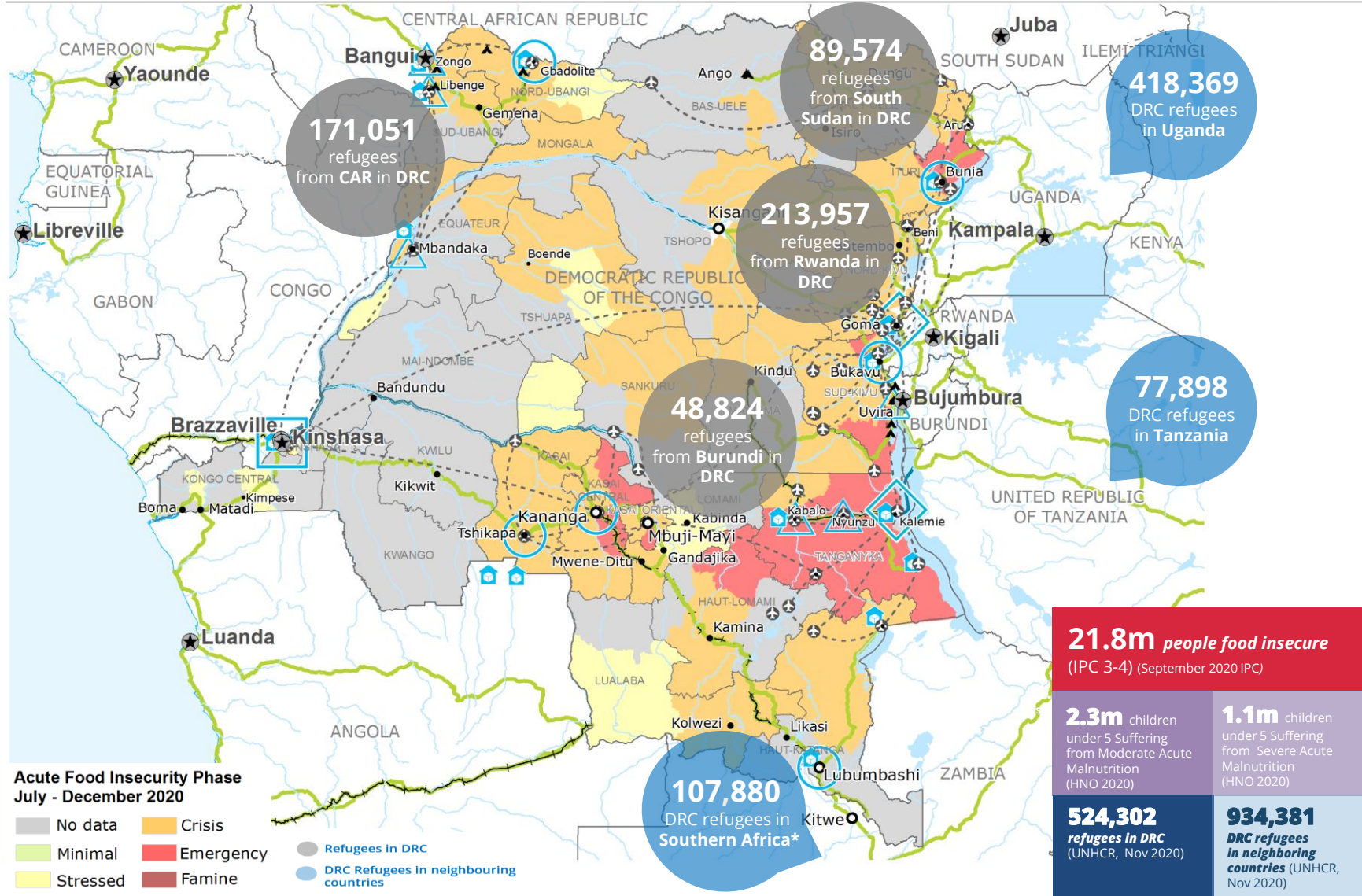
UN HUMANITARIAN AIR SERVICES (UNHAS)



WFP LEVEL 3 EMERGENCY

SITUATION REPORT and COUNTRY BRIEF

Gender and Age Marker **3**



* Includes Botswana, Eswatini, Lesotho, Madagascar, Malawi, Namibia, South Africa and Zimbabwe.
Sources: WFP, UNGIWI, GAUL, GLCSC, OCHA, UNHCR, IPC.
The designations employed and the presentation of material in the map(s) do not imply the expression of any opinion on the part of WFP concerning the legal or constitutional status of any country, territory, city or sea, or concerning the delimitation of its frontiers or boundaries.
© World Food Programme 2020.