



World Food Programme

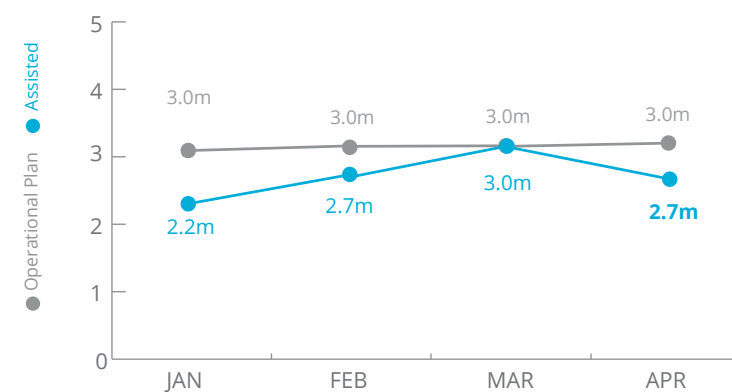
# Syria



## PEOPLE ASSISTED

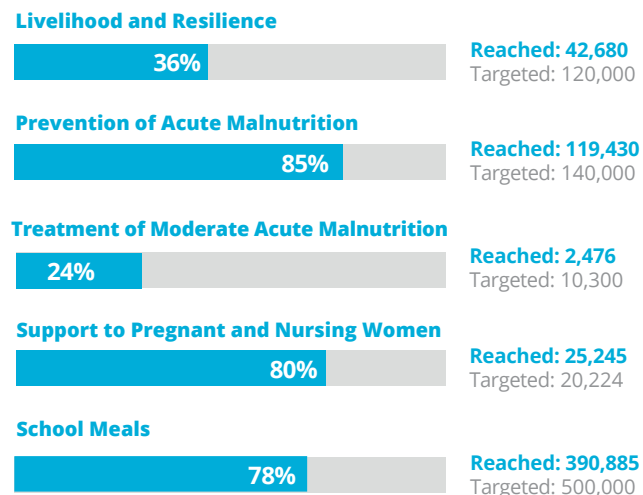
Transitional Interim Country Strategic Plan (T-ICSP)

Through Food Distributions



SOURCE: WFP, 16 MAY 2018

## OTHER ACTIVITIES MARCH 2018



## FUNDING

Syria Transitional Interim Country-Strategic Plan (T-ICSP)

June - November 2018

# US\$176m

Net funding requirement

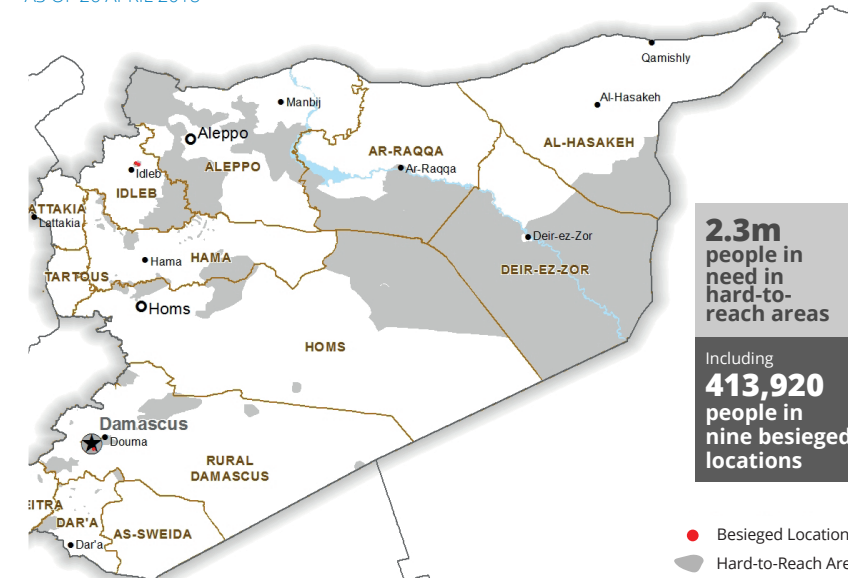
2018 LEVEL 3 RESPONSE



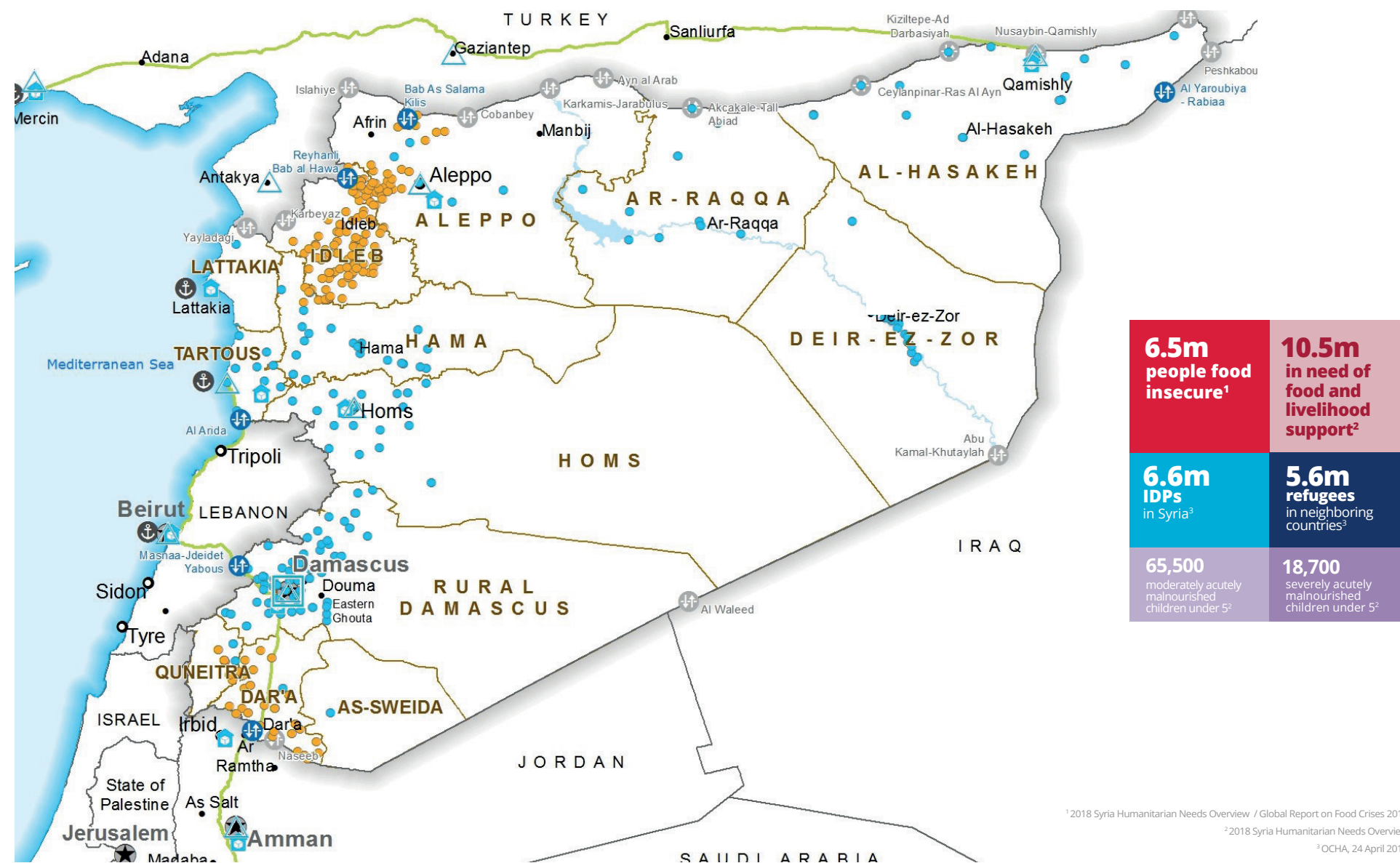
SOURCE: WFP, 24 MAY 2018

## BESIEGED AND HARD-TO-REACH AREAS

AS OF 26 APRIL 2018



SOURCE: OCHA, 01 MAY 2018



<sup>1</sup>2018 Syria Humanitarian Needs Overview / Global Report on Food Crises 2018

<sup>2</sup>2018 Syria Humanitarian Needs Overview

<sup>3</sup>OCHA, 24 April 2018

### Food Distribution Points (FDP)

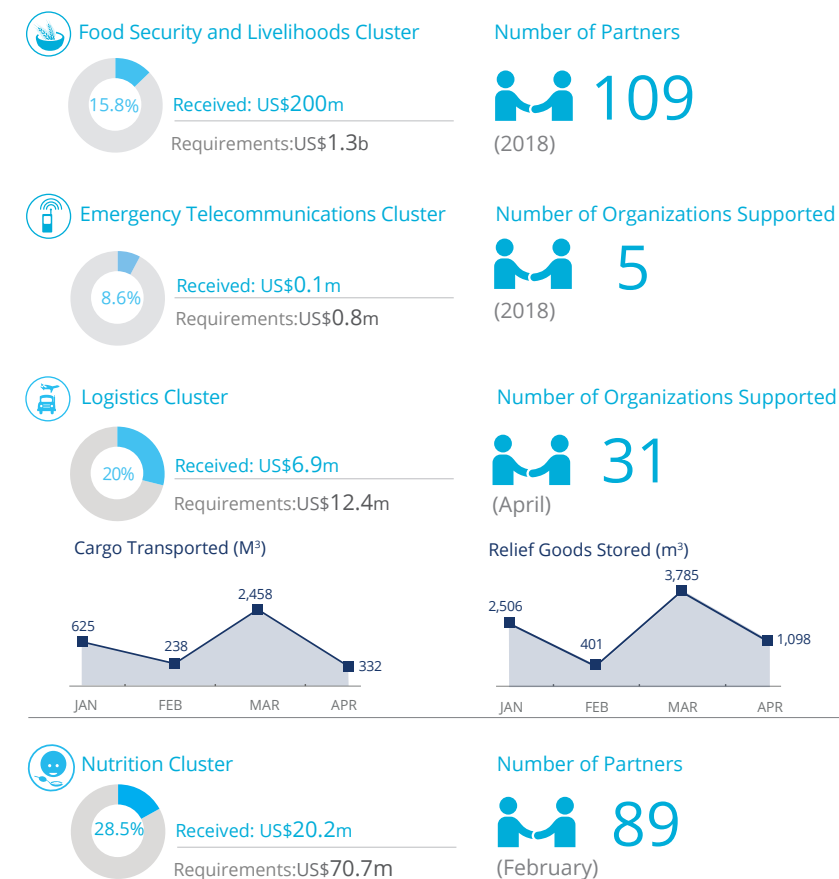
(January 2018)

- FDP Regular Deliveries
- FDP Cross-line Deliveries
- FDP Cross-border Deliveries
- Country Office
- Sub Office
- Field Office
- Warehouse
- Road Supply Route
- Open Border Crossing Point
- Sporadically Open Border Crossing Point
- Port
- National Capital
- Major Town
- Intermediate Town
- International Boundary
- Governor Boundary
- River
- Surface Waterbody

Sources: OCHA, WFP, GLCS, UNGI, UNHCR, Geonames.

The designations employed and the presentation of material in the map(s) do not imply the expression of any opinion on the part of WFP concerning the legal or constitutional status of any country, territory, city or sea, or concerning the delimitation of its frontiers or boundaries. © World Food Programme 2018.

## WFP LED & CO-LED CLUSTERS



SOURCES: OCHA FTS, 28 MAY 2018; CLUSTERS, 18 MAY 2018

## WFP LEVEL 3 EMERGENCY

SINCE 14 DECEMBER 2012

IASC LEVEL 3 EMERGENCY SINCE 15 JANUARY 2013

For more information, see the SITUATION REPORT and COUNTRY BRIEF [www.wfp.org/countries/syria](http://www.wfp.org/countries/syria)

**2A** Syria Transitional Interim Country Strategic Plan  
<http://documents.wfp.org/stellent/groups/public/documents/ep/WFP284303.pdf>

Produced by the WFP Operations Centre (OPSCEN) jointly with Country Office and Regional Bureau Dakar. This dashboard is based on best available information at the time of production. Future updates may vary as new information becomes available.