

Project Number: 200490 | Project Category: **Regional PRRO**

Project Approval Date: November 05, 2013 | Planned Start Date: January 01, 2014

Actual Start Date: February 01, 2014 | Project End Date: December 31, 2017

Financial Closure Date: N/A

Contact Info

Regis Chapman

Regis.Chapman@wfp.org

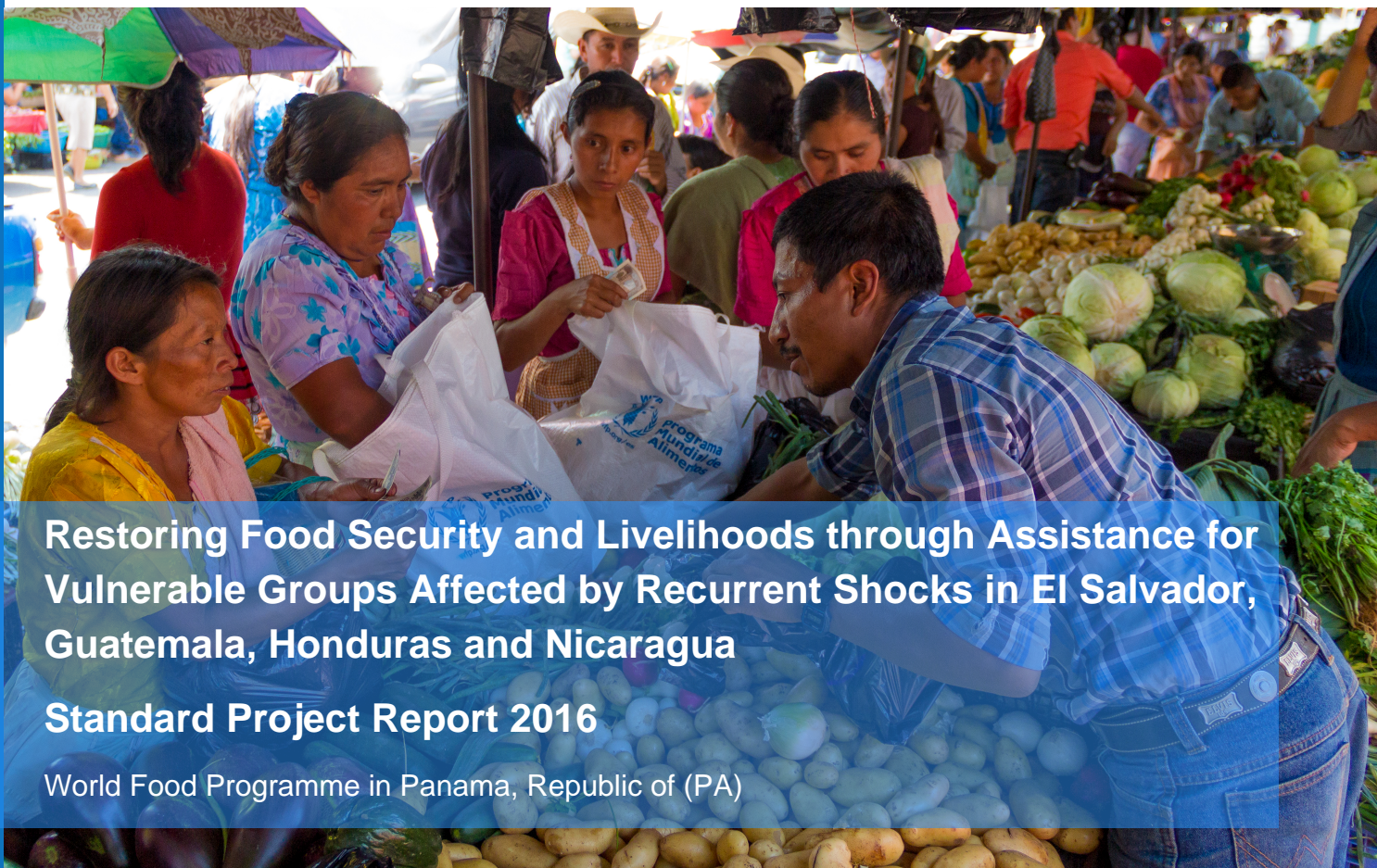
Regional Director

Miguel Barreto

Further Information

<http://www.wfp.org/countries>

SPR Reading Guidance



Restoring Food Security and Livelihoods through Assistance for Vulnerable Groups Affected by Recurrent Shocks in El Salvador, Guatemala, Honduras and Nicaragua

Standard Project Report 2016

World Food Programme in Panama, Republic of (PA)



World Food Programme

wfp.org

Table Of Contents

Regional Context

Project Objectives and Results

Project Objectives

Project Activities

Operational Partnerships

Performance Monitoring

Results/Outcomes

Progress Towards Gender Equality

Protection and Accountability to Affected Populations

Supply Chain

Implementation of Evaluation Recommendations and Lessons Learned

Capacity Strengthening

Figures and Indicators

Data Notes

Overview of Project Beneficiary Information

Participants and Beneficiaries by Activity and Modality

Participants and Beneficiaries by Activity (excluding nutrition)

Project Indicators

Resource Inputs from Donors

Regional Context

In Central America -particularly in Honduras, El Salvador, Nicaragua and Guatemala- food insecurity is closely related to natural disasters and poverty. This sub-region is exposed to **recurrent shocks** (earthquakes, hurricanes, floods, coffee rust, drought and other disasters) and the poorest communities suffer from the repercussions of consecutive crises. Central American countries report the highest scores on the World Risk Index (*UNU-EHS*). According to the Global Climate Risk Index [1], three out of the four countries covered by this regional operation (Honduras, Guatemala and Nicaragua) rank among the ten most shock-affected countries between 1996 and 2015. Between 2015-2016, a record-breaking El Niño phenomenon has caused extreme climate anomalies with impact on hydrological cycles, livelihoods and agriculture; thus, aggravating the already critical situation of vulnerable and food insecure populations in the region.

Between September 2014 and December 2016, WFP conducted a series of Emergency Food Security Assessments (EFSA) to measure drought impacts on food security, in collaboration with government counterparts and other partners. As part of these assessments, household surveys included questions regarding migration of household members caused by drought. Results highlighted a notable level of outmigration. Consequently, WFP and the International Organisation for Migration (IOM), with the support of the Department of International Development at the London School of Economics and Political Science (LSE), conducted an initial exploratory study on the potential links between migration, food insecurity and violence in the Northern Triangle (El Salvador, Guatemala and Honduras). This exploratory study, published in September 2015, concluded that there is a correlation between food insecurity, migration and violence in the three countries.

In August 2016, WFP, in coordination with the Inter-American Development Bank (IDB), the Organization of American States (OAS), the International Organisation for Migration (IOM) and the International Fund for Agricultural Development (IFAD), initiated an in-depth study as a follow up to the 2015 exploratory research on the **links between migration, violence and food security**. Although this study is not yet finalized, preliminary results point out that emigration trends from Central America are related to food insecurity with environmental and climate factors as potential triggers for outmigration. The study revealed that nearly three quarters (72 percent) of households are already applying emergency and irreversible coping strategies such as selling land, reflecting their limited resilience against shocks. Moreover, violence played an important role in triggering outmigration in El Salvador, where violence is directly related to food insecurity; yet this was not the case for Guatemala and Honduras.

The September-December 2016 **EFSA results** indicated that 900,000 people in Guatemala and 715,000 people in Honduras are in severe and moderate food insecurity, due mainly to the lack of food reserves and the increasing cost of food and other household expenditures. Figures concerning El Salvador from early 2016 reported 190,000 food insecure people. As a result, **1.8 million people** in the Dry Corridor were in need of food assistance due to the impact of the drought in 2016.

The 2016 EFSA results also highlighted that the majority of the drought-affected households have adopted negative and irreversible coping strategies that compromise their ability to confront future crises. The past three years of drought were characterized by low crop production which gradually weakened household's resilience capacity. Possibilities of recovery are limited, especially for those households that only rely on one harvest (the so-called "primera") during the agricultural calendar year. For 2016, only Honduras indicated an improvement in the production of basic grains.

[1] Global Climate Risk Index, German Watch, 2017

Project Objectives and Results

Project Objectives

Through this regional protracted relief and recovery operation (PRRO), WFP supports government response to sudden and slow-onset emergencies affecting the food and nutrition security and livelihoods of vulnerable populations in Central America. The overall function of the PRRO is to increase emergency preparedness and ensure rapid response by serving as a contingency operation; thus, granting WFP the flexibility to rapidly respond to different types and scales of shocks including earthquakes, hurricanes, floods, coffee rust, drought and other disasters.

The protracted effects of four years of drought and below average rainfall in the Dry Corridor of Central America have generated significant losses in income and agricultural production negatively affecting the livelihoods of the most vulnerable, particularly subsistence farmers and day laborers in Guatemala, El Salvador and Honduras. In 2016, there were no official reports of losses in Nicaragua.

The objectives of the PRRO are to save lives and protect livelihoods (WFP Strategic Objective 1) through relief assistance, and to help establish and stabilize livelihoods and food security (WFP Strategic Objective 2) through recovery assistance. These objectives are in line with national strategies and emergency preparedness and response plans, as well as with WFP's strategic vision for Latin America and the Caribbean.

In 2016, a budget revision was carried out for a twelve-month extension in time, from 1 January to 31 December 2017. This extension will enable WFP to continue assisting populations affected by sudden and slow-onset emergencies in Central America, particularly, to avoid the worsening of the food security situation of vulnerable populations in the Dry Corridor.

Additionally, as WFP is transitioning to a new Strategic Plan linked to the Sustainable Development Goals, the extension period will allow for greater alignment of WFP operations in the four Central America countries and define strategies in the transition to Country Strategic Plans (CSPs), the new WFP Strategic Plan and the new Financial Framework.



Approved Budget for Project Duration (USD)

Cost Category	
Capacity Dev.t and Augmentation	1,651,200
Direct Support Costs	19,891,402
Food and Related Costs	44,884,229
Indirect Support Costs	12,706,671
Cash & Voucher and Related Costs	115,097,041
Total	194,230,543

Project Activities

In line with the government priorities and the findings of the WFP Emergency Food Security Assessment (EFSA), the PRRO has been providing relief and recovery assistance to populations affected by the four-year drought, responding to the needs of severely and moderately food insecure populations, mainly subsistence farmers and daily wage laborers. Vulnerable families with pregnant and lactating women, children and elderly members and food insecure female-headed households were prioritized for receiving assistance.

PRRO food assistance has been provided through in-kind and cash-based transfers (CBT) or a combination of these transfer modalities, depending on cost-efficiency, effectiveness and beneficiaries' preferences in each

country. CBTs often proved to be the most appropriate transfer modality in the context of functioning and integrated markets of Central America. The 2016 external evaluation of the PRRO 200490 highlighted that WFP partners, beneficiaries, and governments consider cash-based transfers an efficient, flexible and timely form of food assistance in the drought-affected Central American countries. The Government of Nicaragua, however, preferred to receive in-kind food assistance.

Food assistance-for-assets and food assistance-for-training activities were carried out in Guatemala, Honduras and El Salvador. Beneficiary households participated in these activities between 90 to 180 days. In each context, WFP determined the most appropriate activity and transfer modality to best achieve the strategic objectives of the operation. Target households engaged in the creation of household and community assets, such as infrastructure for soil and water conservation and treatment, rehabilitation and construction of roads, rehabilitation of houses, creation and/or improvement of latrines and other sanitary infrastructures, rehabilitation of family gardens and small agroforestry projects aiming to reduce disaster risk and to facilitate the recovery of livelihoods. Assets and training sessions were selected through community-based participatory approaches, considering seasonality, livelihoods, gender, and nutritional aspects.

The operation supported WFP's Strategic Objectives 1 and 2 (WFP Strategic Plan 2014-2017).

Strategic Objective 1: Save lives and protect livelihoods in emergencies.

Outcome 1: Stabilized or improved food consumption over assistance period for targeted households and/or individuals

Activity: Relief food assistance (General Food Distribution-GFD)

In **El Salvador**, given the high impact of the drought on the food security of affected populations, beneficiaries were assisted with general food assistance as per donor requirement (United Nations Central Emergency Response Fund), in the form of a value voucher for a period of 90 days. Vouchers were to be redeemed in supermarkets and other selected shops close to the communities. The transfer value amounted to USD 61.5 for an average family of five. The selection of the voucher modality was deemed the most appropriate from a beneficiaries protection perspective and it was also seen by the country office as an adequate mitigation action to possible security risks. Furthermore, Super Cereal Plus was provided as a complement to households with children aged 6-59 months in order to maintain their nutritional status and thereby prevent micronutrient deficiencies.

WFP **Nicaragua** supported the Government's immediate response strategy with the distribution of an additional meal to schoolchildren in the Dry Corridor. The assistance took place through the National School Meal Programme, which worked as a shock-responsive social safety net. During times of crises and stress, such as the lean season, the school meals programme has served as a valuable mechanism to prevent families from adopting negative coping strategies, including withdrawing their kids from school. The government strategy included general food distribution to families affected by drought, strengthening of nutrition monitoring and health interventions, and support to small-scale agriculture. The Government prioritized the 51 municipalities most affected by the drought in the Dry Corridor. WFP filled in the operational gaps of this intervention to support the Government to reach all schools in targeted areas. Pre and primary school-aged children received a breakfast provided by the Government through its regular school meals programme and WFP provided a lunch composed of maize, rice, beans, vegetable oil and Super Cereal. WFP and the Government pooled their resources to ensure that school children in these 51 municipalities received a complete food ration for two months.

Guatemala and Honduras did not provide unconditional food assistance to beneficiaries.

Strategic Objective 2: Helping to establish and stabilize livelihoods and food security through relief and recovery assistance

Outcome 2: Adequate food consumption reached or maintained over assistance period for targeted households. Improved dietary diversity for targeted school children.

Activities: Food assistance for assets

In Guatemala, Honduras and El Salvador, WFP implemented food assistance for asset creation in the most food insecure areas of the Dry Corridor during the lean season.

In **Guatemala**, the selection of communities followed criteria set by local authorities and WFP at departmental and municipal levels. WFP targeted 464 communities of 14 selected municipalities in the provinces of Chiquimula, Jutiapa and Baja Verapaz in the Dry Corridor. Through a participatory approach at the community level that considered seasonality, livelihoods and gender issues, participants in food assistance-for-assets activities implemented soil and water conservation practices, aiming to reduce risks and mitigate the effects of disasters, as well as to recover livelihoods. Registration of beneficiaries was done using SCOPE, WFP's digital platform for

beneficiary and transfer management. Assistance was planned for 180 days, from April to September 2016, through a combination of in-kind and cash transfers. Beneficiaries collected three monthly cash transfers at a local branch of the Rural Development Bank (BANRURAL) in the local currency equivalent of USD 75 per household. The fourth and fifth deliveries covered 45 days each. Beneficiaries received USD 86.68 in cash (or 77 percent of the entitlement of a household of five members) and a food basket composed of beans (6.8 kg), oil (3.7 kg) and Super Cereal (13.5 kg), valued at USD 25.82 or 23 percent of the entitlement.

In Guatemala, the planned 2015 food assistance targeted at 9 departments with more than 94,000 drought-affected households was carried out early 2016. This late distribution and an additional in-kind donation received resulted in higher distributions of Super Cereal and beans.

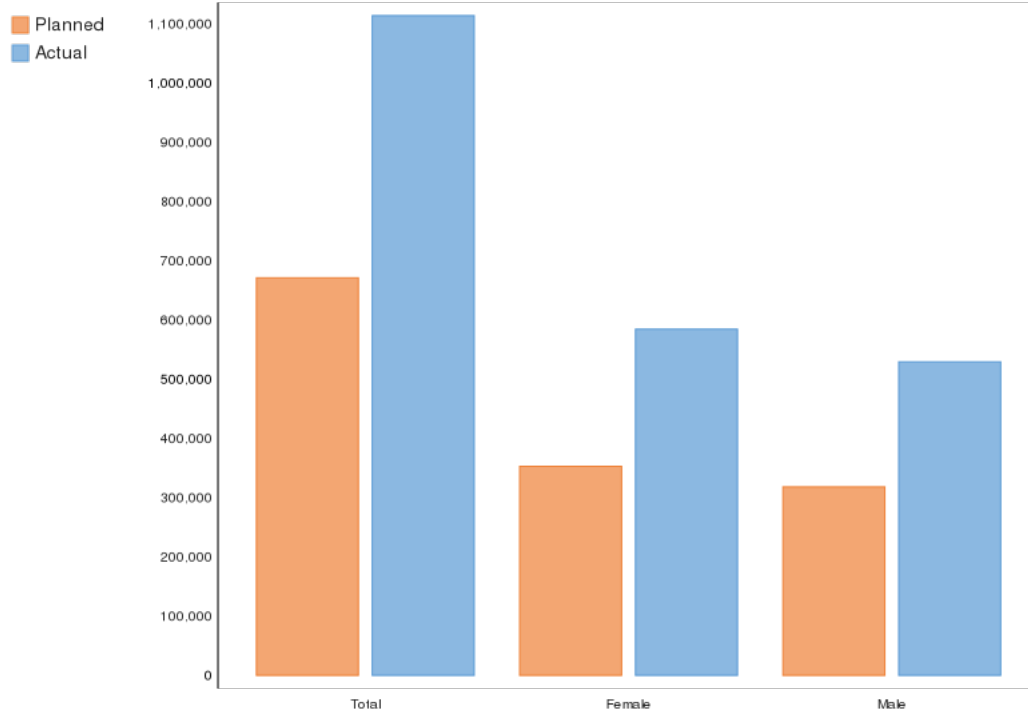
Awareness-raising activities on nutrition and hygiene complemented the food assistance for assets. This initiative was conducted by WFP, jointly with UNFPA, as an additional support to the beneficiaries. As part of its social protection network, the Ministry of Social Development reinforced nutrition education activities at community and household levels through the deployment of trained community volunteers (*madres guía*) who conducted awareness raising sessions for participating families.

In Honduras, local emergency committees - composed of representatives from the health, education, human rights and gender sectors of the municipal authorities, as well as community leaders - were responsible for the selection of targeted communities and beneficiary households, as well as for the prioritization of the assets to be rehabilitated and/or created. Assistance was provided for 90 days to targeted households engaged in asset creation activities, such as soil conservation and treatment, rehabilitation and construction of roads, rehabilitation of houses, creation and/or improvement of latrines and other sanitary infrastructures, rehabilitation of family gardens and small agroforestry projects. Monthly entitlements were calculated on the basis of the household's size: USD 75 for households with 5 members or less and USD 120 for large families.

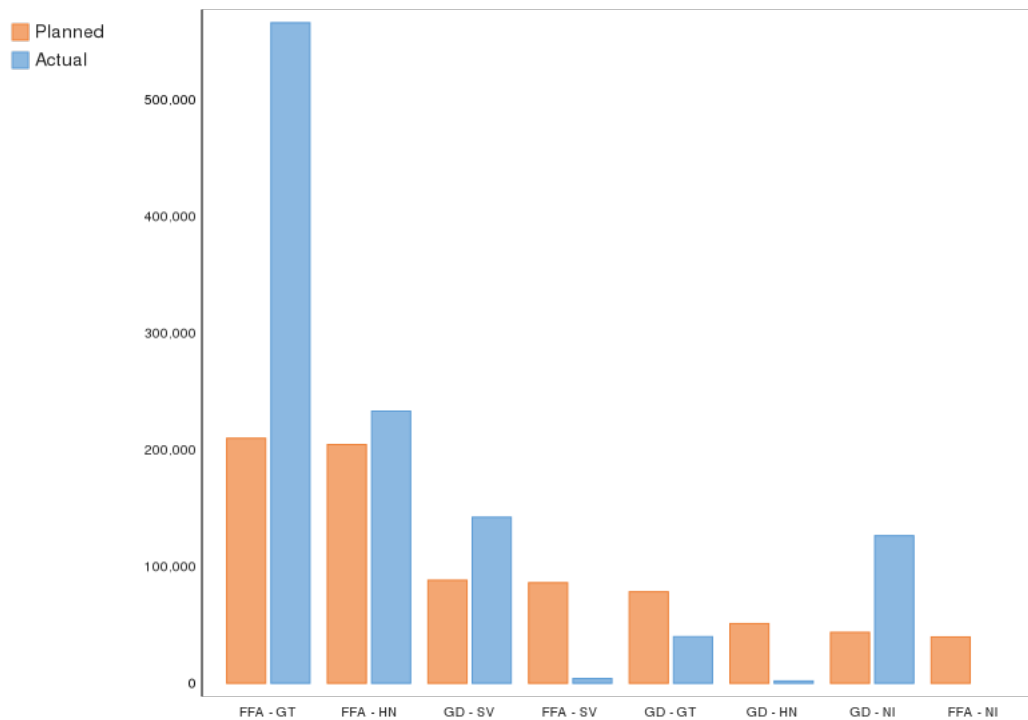
Transfers were done through immediate cash collection mechanisms provided by commercial banks and micro financial institutions (MFIs) in the proximity of communities. Entitlements were provided also via mobile phone based e-money - this transfer infrastructure was scaled up based on successful pilot project. WFP used MFIs for cash distributions and with the participation of local small shops ("*pulperías*") and a network of shops supplying basic products at government mandated price ceilings. Beneficiaries could receive cash and also make purchases in these shops. Whereas working with *pulperías* was highly time demanding for WFP staff, it was very positive in terms of empowering women who owned and managed these shops. This linkage has also benefited other sectors of the local economy.

In **El Salvador**, food assistance for assets was implemented in an optional manner in some communities, in close collaboration with government institutions. This is because two of the main donors (CERF and the Government of El Salvador) requested the provision of unconditional assistance. The selection of beneficiaries was carried out by WFP and local authorities in accordance with agreed vulnerability criteria. The conditional assistance was provided through an electronic value vouchers redeemable at supermarkets and selected shops for a period of 90 days. Asset creation activities focused on soil and water conservation as well as creation of community and household gardens. Critical to the success of the interventions was WFP's support in developing Community Based Participatory Plans to inform work at field level.

Annual Project Beneficiaries

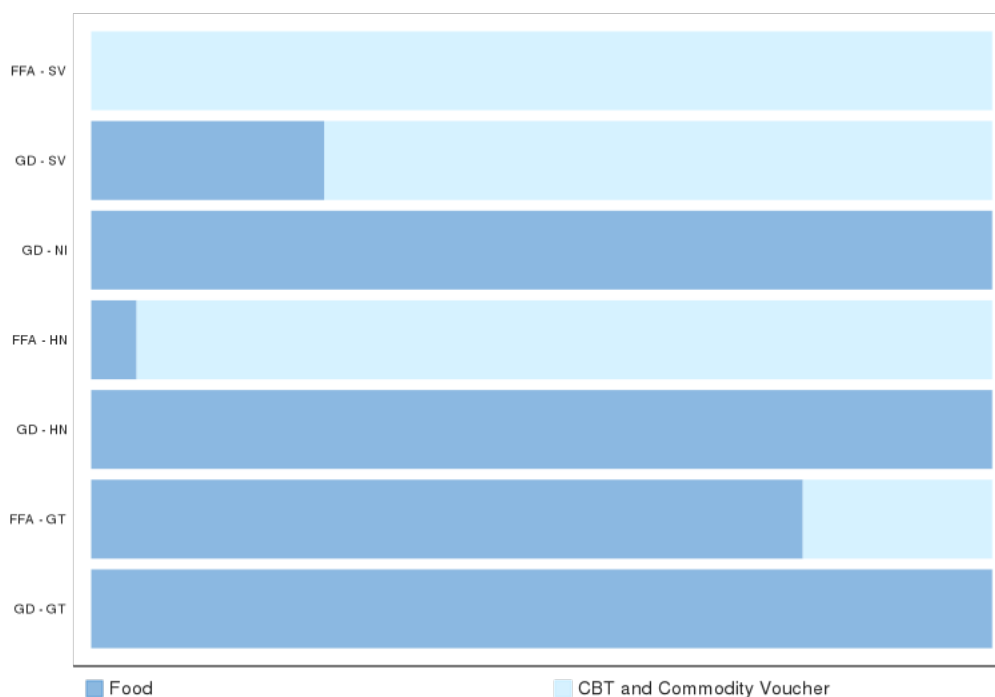


Annual Project Beneficiaries by Activity



FFA: Food-Assistance-for-Assets
 FFA: Food-Assistance-for-Assets
 GD: General Distribution (GD)
 FFA: Food-Assistance-for-Assets
 GD: General Distribution (GD)
 GD: General Distribution (GD)
 GD: General Distribution (GD)
 GD: General Distribution (GD)
 FFA: Food-Assistance-for-Assets

Modality of Transfer by Activity



GD: General Distribution (GD)
 FFA: Food-Assistance-for-Assets
 GD: General Distribution (GD)
 FFA: Food-Assistance-for-Assets
 GD: General Distribution (GD)
 GD: General Distribution (GD)
 FFA: Food-Assistance-for-Assets



Annual Project Food Distribution

Commodity	Planned Distribution (mt)	Actual Distribution (mt)	% Actual v. Planned
Commodity-El Salvador			
Beans	232	-	-
Biscuits	9	-	-
Corn Soya Blend	477	360	75.4%
Iodised Salt	5	-	-
Maize	694	-	-
Rice	853	596	69.9%
Vegetable Oil	139	200	144.3%
Subtotal	2,410	1,157	48.0%
Commodity-Guatemala			
Beans	604	1,967	325.7%
Corn Soya Blend	99	1,658	1,668.6%
Iodised Salt	5	-	-

Commodity	Planned Distribution (mt)	Actual Distribution (mt)	% Actual v. Planned
Maize	2,856	1,650	57.8%
Rice	1,169	551	47.1%
Vegetable Oil	388	169	43.6%
Subtotal	5,121	5,995	117.1%
Commodity-Honduras			
Beans	425	82	19.3%
Corn Soya Blend	65	65	100.4%
Iodised Salt	3	-	-
Maize	1,416	-	-
Rice	1,416	310	21.9%
Vegetable Oil	274	93	34.1%
Subtotal	3,598	550	15.3%
Commodity-Nicaragua			
Beans	225	80	35.4%
Corn Soya Blend	236	33	13.9%
Iodised Salt	10	-	-
Maize	751	136	18.1%
Rice	751	125	16.6%
Vegetable Oil	121	0	-
Subtotal	2,094	373	17.8%
Total	13,223	8,075	61.1%

Cash Based Transfer and Commodity Voucher Distribution for the Project (USD)

Modality	Planned (USD)	Actual (USD)	% Actual v. Planned
Commodity-El Salvador			
Cash	-	61,246	-
Commodity Voucher	-	1,430,018	-
Value Voucher	6,776,532	2,349,513	34.7%
Commodity-Guatemala			
Cash	11,366,752	10,077,569	88.7%
Value Voucher	7,885,972	-	-
Commodity-Honduras			
Cash	15,597,110	10,270,863	65.9%

Modality	Planned (USD)	Actual (USD)	% Actual v. Planned
Value Voucher	4,397,469	-	-
Total	46,023,835	24,189,209	52.6%

Operational Partnerships

In line with WFP's policy on partnerships and with the aim of improving performance towards achieving the Zero Hunger Challenge, WFP has been fostering and strengthening partnerships with different stakeholders throughout the project.

The key driver of partnerships under the PRRO is the shared commitment by governments and other stakeholders to the PRRO's objective of effective food assistance to the most vulnerable and shock-affected households and the restoration of their livelihoods. WFP has an extensive network of partners at regional and national levels that include United Nations agencies; regional inter-governmental organizations; international, national and local NGOs; private sector and civil society organizations.

At country level, WFP's main partners are national governments and their institutions, including ministries of Agriculture, Labor, Environment and Natural Resources, Health, Governance and Territorial Development; national disaster management authorities (NDMAs), specialized food security institutions, as well as sub-national and local government authorities. These partnerships were key at all stages of planning and implementation of the operation. In addition, WFP leads the United Nations Emergency Technical Team (UNETT), which is the emergency coordinating body of the United Nations system, in Honduras, Nicaragua and El Salvador. In Guatemala the UNETT coordination was assigned to another UN agency.

In **Guatemala**, the main cooperating partners included: The Ministry of Agriculture, Livestock and Food (MAGA), the Regional Coordination and Rural Extension Unit (DICORER) which provided agricultural extension support for food assistance for assets, and the Ministry of Social Development (MIDES) supporting cash-based transfers (CBT) including sensitization activities. Regarding field level agreements, WFP worked with the Italian International Cooperation Foundation (COOPI) to carry out post-distribution monitoring and outcome monitoring using WFP's standard procedures and mobile data collection platform (GRASP).

WFP **Honduras** has worked closely with the Technical Unit for Food Security and Nutrition (UTSAN), within the Ministry of General Coordination entrusted with planning, coordination and performance of monitoring and evaluation of food security and nutrition programmes. The Unit for Agricultural Science and Technology (DICTA) and the Ministry of Agriculture (SAG) remained key partners in the implementation of the PRRO. The close coordination with these partners allowed WFP to target food assistance prioritizing the most affected households in the Dry Corridor and to continue performing key monitoring and data analysis functions which eventually helped making better informed decisions. WFP also established new partnerships in vulnerability assessment and mapping, and in monitoring and evaluation with the Latin American Faculty for Social Studies (FLACSO), FAO and NGOs. These partners supported WFP in conducting Emergency Food Security Assessments, post distribution monitoring and data collection and analysis. Additionally, WFP has been supporting the work of the Observatory for Food Security and Nutrition (OBSAN) with the Autonomous University of Honduras (UNAH) in secondary data collection and analysis. OBSAN has been involved in the Integrated Context Analysis exercise at national level and supported the WFP mobile vulnerability data analysis (mVAM) and validation [1].

In **Nicaragua**, coordination with government partners is led by the Ministry of Foreign Affairs, which ensured complementarity and alignment between WFP interventions and government programmes. WFP Nicaragua partnered with the Integral Education Nutrition Programme of the Ministry of Education (PINE). PINE was a key partner to determine the appropriate lunch ration for school children, contributed to design logistic routes, and participated in targeting and coordination of food distributions. WFP was able to provide adequate resources and identified sufficient stocks of food to meet requirements. The joint efforts resulted in complementary allocation of resources to better respond to the needs of school children.

In **El Salvador**, at the national level, the Ministry of Health through the National Council for Food and Nutrition Security (CONASAN) mobilized USD 1.4 million from the government Emergency Fund (FOPROMID). FOPROMID funds were entrusted to WFP and the implementation was coordinated with the Ministry of Health, Ministry of Governance and Territorial Development and its six departmental governments. The initiative contributed to enhanced inter-governmental coordination to reach the most vulnerable communities affected by food insecurity.

Also, WFP fostered synergies with a series of national programmes such as: Ciudad Mujer, providing training sessions to women on women's rights and agriculture; the Ministry of Agriculture and Livestock, facilitating trainings on issues related to soil management and organic fertilizer production and the Ministry of Labor, promoting spaces

for community participation in fairs at the departmental and municipal levels. To reach the highest number of households, the Government asked not to budget for food assistance for asset creation activities. Still, WFP offered optional trainings.

At the regional level, PRRO activities benefit from the coordination among the regional organizations based in Panama as well as from different regional groups and platforms such as the Risk, Emergency and Disaster Regional Working Group for Latin America and the Caribbean (REDLAC), UNDG LAC Protection Group and Resilience Group among others.

[1] The WFP mobile Vulnerability Analysis and Mapping (mVAM) project collects food security data through short mobile phone surveys, using sms, live telephone interviews and an interactive voice response system.

Performance Monitoring

The regional PRRO is managed from four country offices, nine sub-offices and twenty-eight field monitors strategically located to oversee operations, particularly across the Dry Corridor. **Monitoring activities** were carried out to ensure accountability, to avail of real-time data to inform decision makers, and to provide evidence of lessons learned subsequently to be shared with local partners.

In line with WFP's normative framework for monitoring and evaluation (M&E), all country offices designed **M&E plans** to collect, analyze and report outcome and process monitoring information. These plans were elaborated in close coordination with government entities and carried out with the Latin American Faculty of Social Sciences (Facultad Latinoamericana de Ciencias Sociales, FLACSO) in Honduras and Italian Cooperation Foundation (Cooperazione Internazionale, COOPI) in Guatemala. In El Salvador, monitoring activities were only carried out by WFP staff. In Nicaragua, WFP supported the Government in conducting monitoring activities.

Following up on the recommendations of centralized evaluation of this operation, **M&E arrangements** were further enhanced. Led by a dedicated regional M&E expert, sampling methodologies were developed and outcome studies conducted in El Salvador, Guatemala and Honduras. In addition, systematic monitoring of project sites has been carried out based on a random sampling of households and communities.

The evaluation also recommended the introduction of a standardized database to manage outputs and outcomes of the project. In June 2016, all offices introduced **COMET**, the corporate platform for managing programme operations effectively. The platform was used to capture and analyze all output information directly from the field. COMET allows for the comparison of field data with commitments made during programme design and has enhanced performance management of the operation.

The introduction of innovative **platforms for mobile data collection** have led to cost-savings. In this operation, WFP relies on the Geo-referenced Real-time Acquisition of Statistics Platform (GRASP), the Open Data Kit (ODK collect), and the Census and Survey Processing System (CSPRO). All these platforms used tablets and smartphones to capture and store real-time information, thus facilitating data collection, cleaning, and aggregation, thus increasing the cost-efficiency and effectiveness of data analysis to inform programme implementation.

A **project baseline** was conducted based on a representative sample of beneficiary households. Information collected during follow-up surveys allowed to measure progress towards the achievement of intended project outcomes. Baselines were carried out prior to the start of food assistance, while follow-ups took place three weeks after the final transfer. Because of the longer period of assistance, Guatemala could carry out a baseline and two follow-up surveys on outcomes using a panel of households.

WFP monitored the distribution of food and cash-based transfers (CBT) up to their final delivery points. In case of cash-based transfers, WFP worked closely with local and national government authorities to assess the proximity of financial service providers, transport costs, waiting times, information received on the assistance, and safety problems experienced in relation to the food assistance provided. In addition, WFP continuously monitored market functioning, food prices, availability of nutritious quality food and infrastructure.

The cross-cutting indicators on **gender equality and protection and accountability** to affected populations, were measured using focus group discussions and post-distribution monitoring to gather information on household food needs and intra-household decisions on food and cash transfers. During beneficiary contact monitoring, WFP used the opportunity to inform beneficiaries about programme objectives, beneficiary selection, transfer modalities, and beneficiary feedback mechanisms. Related information was also disseminated through posters and flyers at distribution points.

In 2016, increased importance was given to heighten WFP's accountability towards beneficiaries. A variety of traditional and innovative **feedback and complaints mechanisms** were introduced. In El Salvador, feedback was obtained during regular monitoring exercises through questionnaires and focus groups. In Guatemala, suggestion boxes and a toll-free beneficiary hotline were put in place to complement to information gathered through informal checks and focus groups discussions. WFP Honduras provided a phone number to which beneficiaries could send short messages stating their complaints. In Nicaragua, beneficiary feedback was obtained mainly through government institutions and implementing partners.

Results/Outcomes

In 2016, the regional PRRO proved its effectiveness to achieve planned strategic objectives and operational outcomes. Key results per country are summarized below.

WFP **Guatemala** used a combination of transfer modalities, according to beneficiary preference and WFP's availability of resources. In total, over USD 10 million of cash and nearly 6,000 mt of food were transferred to more than 600,000 drought-affected people. As part of the government drought response plan, over 94,000 households had started receiving food assistance late 2015 and continued to receive support up to early 2016. Food assistance to these beneficiaries was provided in-kind: rice and beans from an in-kind donation were complemented with maize and Super Cereal supplied by the Government. The extended assistance to beneficiaries under the 2015 drought response plan resulted in a higher than planned amount of food distributed and beneficiaries assisted.

In addition, about 24,000 households received either cash transfers or a mix of cash and food assistance as an incentive for their participation in asset creation activities. The food basket was composed of beans, oil and super cereal, corresponding to a daily transfer of USD 0.50 per person. The combination of transfer modalities proved to be very effective, as it provided both basic staples and the flexibility to complement these with fresh produce according to beneficiary needs and preferences. The reliance on combined transfers has resulted in a lower amount of CBT distributed than planned.

Assisted communities created a wide range of assets, including tree nurseries and forests to protect water sources, barriers and gullies to conserve soil, and vegetable gardens for dietary diversification and improved food security. WFP assistance increase the number of functioning assets in 83 percent of communities. These assets will help communities adapt to climate change.

In order to address the effect of the prolonged drought, the Government and WFP decided to extend the provision of food assistance in the most affected areas to 180 days. By the end of the assistance period, beneficiaries had attained acceptable food consumption.

The household food consumption score (FCS) [1] is a measure for dietary diversity, food frequency and the relative nutritional importance of consumed food. By the end of the intervention, 99 percent of households reached acceptable or borderline food consumption, corresponding to an adequate food intake of households. This change is considered a substantial improvement, for the 27 percent of households with poor or borderline food consumption levels at the baseline stage.

Prior to the assistance, one third of households only consumed four or less food groups. Food assistance resulted in a more diversified diet, including the consumption of foods rich in animal proteins and vitamins [2]. These positive results are likely related to the wide range of options provided by cash-based transfers, including the purchase of meat, eggs, dairy products, vegetables and fruits, that the most vulnerable families can usually not afford.

In addition, WFP assistance significantly decreased families' reliance on negative strategies to cope with the effects of prolonged drought. Compared to the beginning of the lean season in March 2016, households resorted less to assets-based coping strategies, such as selling of assets and agricultural inputs to meet food needs. Furthermore, only very few households continued applying consumption-based coping strategies such as consuming less expensive food, spending savings or borrowing money.

In 2016, WFP **Honduras** assisted over 235,000 beneficiaries with USD 10.2 million in cash and 550 mt of food. About 96 percent of targeted beneficiaries received CBT, while 4 percent were assisted with in-kind food distributions. In view of the heightened needs addressed by the national response drought plan, WFP, in coordination with the national Government, increased the number of assisted beneficiaries in the most affected municipalities while reducing the length of assistance from 180 to 90 days.

In order to better address household food needs, the Government and WFP jointly decided to provide CBT entitlements based on family size.: USD 75 for households with 5 or less members and USD 120 for larger families. Household surveys and focus group discussions confirmed the appropriateness of the differentiated approach in order to achieve food security for all. The change in the provision of entitlements was well understood and accepted

by both small and large families.

Cash transfers were distributed using commercial bank services, Micro Financial Institutions (MFIs), and e-money, notifying beneficiaries of the receipt of their entitlements through text messages. A mobile money pilot initiative had started in 2015 to assist 400 households in one municipality, which was then scaled up to reach 2,300 households in 5 municipalities during 2016. Cash transfers had a positive effect on the local economy, by stimulating demand and revitalizing rural markets and production. The use of MFIs for cash distributions proved to be particularly successful as it generated additional benefits, such as increased access to credit and financial services near local markets and beneficiaries' homes. MFIs saw an increase in demand for their services, expanded cash flow and heightened credibility at the local level.

WFP and its partners implemented various activities at the local level in order to enhance community livelihoods and resilience to shocks. Communities identified and prioritized the creation of assets, such as the rehabilitation of agricultural land, the rehabilitation and construction of roads to improve access to communities and markets, and the rehabilitation of residential homes to enhance living conditions and minimize risks related to the transmission of mosquito-transmitted diseases such as zika, chikungunya or dengue.

Water reservoirs and harvesting significantly reduced the daily workload of women. The government provided matching funds for material costs and technical support, while WFP supported the labor-intensive activities through the assets creation program. Overall, outputs were satisfactorily achieved in line with community plans. The minor underachievement in outputs is attributable to limited availability of seeds, plants or construction materials supplied by local counterparts. In order to enhance synergies in the creation of community assets, WFP will strengthen its collaboration with national government counterparts, such as the Ministry of Agriculture and the Institute for Forest Conservation and NGOs.

WFP Honduras was successful in preventing a further deterioration of food security in targeted households affected by the fourth consecutive year of the El Niño-induced drought. By the end of the assistance period, about 85 percent of households had acceptable food consumption, which represents a slight improvement compared to the baseline. However, due to the severity and recurrence of the crisis, food assistance could only prevent a further deterioration of consumption levels in indigenous areas and the most vulnerable and remote regions.

Almost all assisted households increased the quality of their diet by consuming at least one additional food group (mainly animal protein and vegetables). After the assistance, the proportion of households consuming 6 of the 7 food groups had increased, reducing to almost zero the share of households that consumed less than 4 food groups.

The average Coping Strategy Index (CSI) [3] has not changed significantly, which indicates that WFP assistance prevented a further deterioration of household food security. Nonetheless, the reliance on certain negative coping strategies decreased. Almost all households reduced the use of assets-based coping strategies like selling productive assets or reducing expenses for agricultural input. Regarding consumption-based coping strategies, targeted households relied less on strategies such as reducing the number of meals, or reducing the consumption of adults to feed the children.

In **El Salvador**, the regional PRRO provided 146,400 beneficiaries with over USD 2.3 million and over 1,100 mt of food assistance. Based on beneficiary preference and WFP's availability of resources, beneficiaries received 90 days of food assistance through different modalities. About 4 percent of beneficiaries only received in-kind transfers, 30 percent received a combination of CBT and in-kind transfers and about 65 percent received only CBT. Although assistance was planned to last for 180 days, heightened needs have led to the provision of 90 days of food assistance to a larger group of beneficiaries.

In light of the prolonged drought, two donors requested that beneficiaries be assisted with unconditional transfers. This has resulted in a lower number of beneficiaries participating in asset creation activities. Nonetheless, the interest and commitment of beneficiaries to their longer-term food security was reflected by an attendance rate of 80 percent in optional training sessions.

Asset creation activities focused on the reactivation of livelihoods and soil conservation. The creation of household and community gardens ensured food access, while improving families' dietary diversity and income opportunities. Other activities, such as the construction of infiltration ditches, contributed to increased water availability in community aquifers for human consumption and productive use. Activities related to the rehabilitation of roads, bridges or latrines were particularly appreciated by beneficiaries, who often continued working on these assets on a self-help basis, resulting in higher overall outputs of the project.

All asset creation activities were complemented with trainings aimed to support beneficiaries and increase their knowledge on topics such as healthy diets, family economics, water sanitation and hygiene, and efficient use of the voucher received. Focus group discussions indicated that beneficiaries appreciated trainings and were interested in learning more about these topics.

Food security of participating households improved. The last follow-up survey indicates 96 percent of households with acceptable food consumption. This an important achievement considering that at baseline stage, almost 40 percent of the households had poor or borderline food consumption. Only 1 percent of the households reported poor food consumption at the end of the assistance.

Similarly, by the end of the assistance cycle, targeted households consumed a more diverse and balanced diet that included dairy products and vegetables. Cash based transfers provided access to a wide range of food, encouraging a diversification of diets.

The use of coping strategies decreased as a result of the food assistance. Beneficiaries no longer relied on one or the other food consumption-based coping strategy, leading to a 30 percent reduction in the value of the CSI compared against its baseline value. Less households used coping strategies such as borrowing food, or relying on help from friends and family. Likewise, households utilizing crisis or emergency livelihood-based coping strategies, reduced practices such as borrowing money, beg for money, and sell tools and land, which led to a nearly 50% reduction against the baseline value of this indicator.

WFP interventions **in Nicaragua** were aligned with government priorities. In a changing context, where the government was better prepared to respond to recurrent crises, WFP quickly adapted its strategy and ensured a cohesive approach to emergency response. The overall PRRO strategy for Nicaragua was jointly revised with the Government. WFP had originally planned to provide general food distributions and food-for-assets activities within the PRRO, yet the Government requested WFP support to scale-up its school meals programme in the Dry Corridor. Therefore, technical assistance activities increased, while food distributions were reduced. In 2016, planned outputs in terms of targeted schoolchildren and technical assistance were reached.

WFP provided food assistance in the Dry Corridor through the government social safety net programme. About 126,000 children in pre and primary schools were reached with a complete food basket for two months. WFP targeted all schoolchildren in 51 drought-affected municipalities. Schoolchildren received two meals: a breakfast and a lunch before going home. The breakfast was provided by the Ministry of Education's National School Meals Programme, while the lunch was provided by WFP and the Government as part of the joint drought-response. The National School Meals Programme was utilized as a platform for this intervention. The Ministry of Education indicated that the additional meal was an effective incentive to keep children in school and mitigate the impact of food scarcity at home. The meal was also a direct resource transfer to poor rural food-insecure households that were able to count on at least two meals a day for their school-aged children in a predictable and timely manner during the lean season.

WFP provided two training sessions and 10 workshops in emergency preparedness and reached about 1500 people, half of them women. Trainees included SINAPRED staff, community members, neighborhood volunteers, the fire department, and community leaders at national sub-regional and local levels. Participants enhanced their skills and knowledge on emergency preparedness, disaster risk reduction and management, food security in emergencies and emergency food storage. Furthermore, over 7,500 informative brochures on topics ranging from anti-seismic constructions to tsunami response plans were produced and distributed.

Those with greatest exposure to shocks were also the most vulnerable, living in remote communities and hampered by poverty and poor infrastructure. Accordingly, support was also provided at household level targeting communities at high risk of natural hazards in eight departments: Managua, Leon, Matagalpa, Nueva Segovia, Chontales, Jinotega, Boaco and Estelí. People became equipped with knowledge and tools, such as community response plans to natural disasters. A total of 234 people participated in the revision of community response plans. Among the participants were shopkeepers, civil defense, volunteers, local police, community leaders and members. In addition, 1,119 people received training on prevention of fire hazards and local emergency preparedness.

The skills acquired through these trainings as well as contingency and response plans were tested out during emergency simulation exercises. In 2016, four simulation exercises at national level were carried out by SINAPRED, with the participation of the private sector, schools, religious institutions, government institutions, medical and rescue brigades and the general population. Simulations used a multi-hazard approach, including earthquakes, hurricanes, floods, volcanic eruptions and fires scenarios.

The largest emergency simulation exercise called "Safeguarding Lives" included the participation of more than half a million people nationwide, reaching 152 out of the 153 municipalities in the country. This included the evacuation of 82 communities at highest risk of a tsunami threat. The participation in this national exercise was higher than expected, originally estimated by the Government between 250,000 to 350,000 participants. Moreover, an emergency simulation was carried out specifically for the Caribbean coast of Nicaragua, one of the most hazard prone areas, with a participation of more than 82,000 people.

WFP transferred planning and monitoring tools, such as methodologies for seasonal livelihood planning (SLP) and emergency food security assessments to SINAPRED, through a workshop in the department of Chinandega. SLPs are part of the corporate three-pronged approach to resilience programming and activity planning. This methodology

was adapted to focus on disaster preparedness. A total of 99 people participated, of which almost 60 percent were women, including staff from government institutions at central and local level and community leaders.

Based on existing needs and with the guidance of SINAPRED, WFP also provided technical equipment and supplies required to ensure an effective response to national entities. The national Emergency Task Force was equipped with laptops, radios, Wi-Fi systems, routers and more. Supplies were also provided to the firefighters.

[1] The household Food Consumption Score (FCS) is a measure of dietary diversity, food frequency and the relative nutritional importance of the food consumed. An acceptable FCS reflects a high probability that a household's food intake is adequate.

[2] The Dietary Diversity Score (DDS) measures the number of different food groups consumed over a given period. An increase in the score shows an increase in the quality of the diet.

[3] The Coping Strategy Index (CSI) measures the frequency and severity of behaviors households engage in when faced with food shortages. An increase in the CSI implies a deterioration of the food security situation of the household.

Progress Towards Gender Equality

In Central America, women of all ages, regions, economic status and ethnic origin, continue to face challenges due to unequal access to resources, gender based violence (GBV) and pervasive social norms that reinforce traditional gender roles, such as women's solely responsibility of unpaid domestic and care work within the household, limited decision-making power in regard to the use of income, restricted participation in community structures as well as lack of equal access to opportunities. All these, have a direct impact on their own and their family's food security and nutrition status.

In order to integrate gender equality and women's empowerment to achieve Zero Hunger, WFP's Gender Policy (2015-2020) and the Regional Gender Strategy (2016-2010) provide a framework to ensure that the different food security and nutrition needs of women, men, girls and boys are met.

According to the monitoring data available for three of the four countries (Guatemala, Honduras and El Salvador) on the corporate gender indicators, significant progress has been made in joint decision-making in the family over the use of money and resources. According to the Women's Empowerment in Agriculture Index, control over the use of own income is one of the three top contributors to women's empowerment. WFP works in all four countries with male and female beneficiaries on raising awareness about the benefits of gender equality and joint engagement in decision making on issues related to household nutrition and food security.

In **Guatemala and El Salvador**, both women and men participate in cooking and training sessions to improve their knowledge on nutrition, with the triple objective to improve families' knowledge on nutrition, increase the purchase of nutritious foods and diversify families' diets. In the case of **El Salvador**, the presence of a male trainer has increased the number of participating men. This initiative is part WFP's efforts to shift traditional roles at household level towards a fair and equal distribution of domestic and care work, in order to improve the food security and nutrition of the population.

In **all four** countries assisted under the PRRO, most of the women who occupy leadership positions in committees were trained on organization and leadership skills, on roles and functions as members of the committees, and on transfer modalities. In El Salvador, women were very receptive of trainings received, as these allowed them to increase group cohesion. For instance, women worked together for the maintenance of community gardens, which allowed them to reduce expenditures and increase their access to a variety of seasonal vegetables.

In mid-2016, WFP **Honduras** supported a gender and age analysis of the WFP assisted population in order to better understand gender dynamics around food security and nutrition. The analysis, carried out by an external consultant with the participation of WFP, government counterparts and partners, included the review of best practices, identification of gaps and potential opportunities that may inform current programming and the upcoming WFP Country Strategy Plan (CSP) formulation. A gender and protection risk matrix was jointly elaborated and validated by the external consultant and WFP Honduras. The external consultant met with government counterparts, partners, WFP staff and key-informants, including local authorities and local market actors. Several focus group discussions with men and women of all ages, as well as children, were organized in various communities and municipalities of the Dry Corridor to strengthen the gender and age analysis. Following up on the recommendations presented by the study, WFP Honduras has started to systematically include gender related questions into data collection and qualitative monitoring tools and make use of the gender and protection risks analysis.

WFP has strengthened partnerships with the Government at the national level while advocating for gender equality and women empowerment. **In Nicaragua**, where the Government has a strong gender strategy, the role of WFP is focused on strengthening partnership and advocacy. The visit of the WFP Gender Office Director presented a good opportunity to reinforce collaboration with Government and partners. Training sessions and workshops were implemented jointly with SINAPRED and included gender modules to learn identify and address the different needs of men, women of all ages, as well as children, during emergency situations. These trainings reached SINAPRED technical staff, municipal governments, civil defense, community leaders and members, national and local government institutions and local community organizations.

As a strong advocacy, the four countries have been highly engaged in last year Orange Campaign “16 days of activism to eradicate violence against women and girls”. **Guatemala** was reaching communities providing video sessions and discussions around the topic of gender-based violence and gender equality, while WFP **Honduras** supported the National Institute of Women in disseminating radio messages that emphasize the link between food security, gender-based violence and sexual and reproductive health. In collaboration with partners and cooperatives, **Nicaragua and El Salvador** raised awareness through conferences, and using "cine-forums" and wall art as tools to reach the population.

Protection and Accountability to Affected Populations

In compliance with its protection policy and in line with the principle of ‘do no harm’, WFP and its partners mainstreamed protection issues throughout the project intervention cycle. Beneficiaries’ and participants’ security during distributions and community activities has been ensured, respect for beneficiaries’ integrity and the non-discrimination principle have been applied, as confirmed by monitoring. WFP regularly conducts security assessments to evaluate the situation before and during any intervention.

Nicaragua is considered as one of the safest countries in Central America; despite security risks being low, WFP Nicaragua and government partners ensured that all activities, including trainings were held during daylight hours and in locations near communities to avoid walking long-distances and risks of theft or assault. Training sessions of the National System of Disaster Attention, Prevention and Mitigation (SINAPRED) included protection measures during emergencies.

In Honduras, El Salvador and Guatemala, the so-called “Northern Triangle of Violence” additional measures were put in place by WFP to mitigate any possible risk of violence and extortion. WFP **Honduras** established close coordination mechanisms with local committees, authorities, cooperating partners and financial service providers in order to put in place prevention and mitigation measures such as organized joint transport between communities and cash distribution points. Local authorities supported safe environments with their presence in nearby areas. No major safety incidents were reported in relation to project activities. When cash-based transfers were introduced in **El Salvador**, WFP selected a cash transfer service provider based on a sound risk analysis. WFP chose a micro-financial institution with many points of withdrawal, inside supermarkets, pharmacies, and national post offices, to ease access for beneficiaries and to prevent robbery/extortion. As a result, no security incident has been reported.

In all four countries, the targeted population has been properly and regularly informed by WFP staff, partners and local committees about the programme benefits and entitlements, including ration size, distribution dates and logistics arrangements. In **Guatemala**, all community activities have been communicated to beneficiaries also in local languages, even in the most remote communities. In **Nicaragua**, communities targeted by WFP are remote, difficult to access and characterized by weather extremes. This was taken into consideration when planning activities. Schools were informed of food rations and distribution schedule.

In order to protect the most vulnerable, soft conditionalities were applied for disabled people, pregnant and lactating women, and the elderly, when participating in food assistance for asset creation activities.

As a means to ensure the effectiveness, transparency and accountability of WFP's food assistance, WFP established complaints and feedback mechanisms for its beneficiaries. These mechanisms ranged from traditional suggestion boxes to telephone helplines free-of-charge (**Guatemala and Honduras**). Calls were mostly related to exclusion and replacement of beneficiaries, third-party complaints, referrals, request of information on delivery days, and ‘thank you’ messages. All issues raised were duly addressed and beneficiaries were informed about actions taken.

Supply Chain

Given the increased reliance on cash-based transfers, WFP has considerably reduced food-related procurement and logistics.

WFP reduced the costs of Landside Transport Storage and Handling (LTSH). WFP ensured timely, continuous and cost-effective provision of entitlements and introduced price and quality control of food items provided. WFP also invited small traders to ensure food was easily accessible for beneficiaries in remote rural areas.

Cash-based transfers empowered beneficiaries to select items from a wide range of nutritious foods. In order to ensure the quality of products selected by the beneficiaries, WFP regularly monitors its suppliers, including shops, supermarkets and associations included in the supplier selection process. Actions were taken to ensure selected suppliers comply with WFP in terms of food handling, warehouse management, quality control and good logistics practices.

In July 2016, WFP introduced the Logistics Execution Support System (LESS) which serves as the corporate supply chain online management system to track food supplies in real time.

In Guatemala, the Rural Development Bank—BANRURAL was contracted for a 2-year period on the basis of its cost-efficiency and geographical coverage in the countryside. Using the SCOPE beneficiary registration system, WFP provided payment list instructions and a letter of authorization to BANRURAL which included beneficiary information and payment dates. BANRURAL made all arrangements for payments at cash collection points. WFP printed beneficiary ID cards that were matched with the unique ID provided by the Government and allowed beneficiaries to collect cash. WFP transferred of funds to the bank 2-3 days in advance of the payment schedule. WFP coordinated with local authorities and suppliers for markets to be open on the day of cash collection, in order to increase beneficiaries' access to local markets with quality and nutritious foods at competitive prices.

WFP Honduras strengthened the logistics capacity of the Permanent Contingency Commission (COPECO) through emergency preparedness and response trainings, as well as through the supply of logistics equipment such as pallets and digital scales.

In WFP Nicaragua, the Supply Chain Committee composed of Resources Management, Donor Relations, Programme, Procurement, Logistics and Finance staff, seeks to reduce lead times, ensure the timely delivery of quality food, analyze the funding situation, make recommendations to management to enhance the functioning of WFP's supply chain. A procurement plan was drafted to optimize the allocation of available resources. All commodities procured in 2016 for the PRRO were locally purchased. Food was delivered by suppliers to government warehouse in Managua. This warehouse is managed by WFP and the Ministry of Education. Distribution plans and logistics routes were jointly planned with government partners. Food was delivered to schools in a timely manner; teachers, school administrators and communities were informed on food delivery schedules.

WFP El Salvador has been using voucher transfers relying on a major supermarket chain. The chosen transfer infrastructure allowed timely, continuous and cost-effective provision of entitlements and enabled price and quality control of food items provided. In order to strengthen capacities of small producers, as per government development policy, WFP also invited small traders to ensure food was easily accessible from beneficiaries in remote rural areas.



Annual Food Purchases for the Project (mt)

Commodity	Local	Regional/International	Total
Beans	128	-	128
Maize	343	-	343
Total	471	-	471
Percentage	100.0%	-	

Implementation of Evaluation Recommendations and Lessons Learned

WFP has been providing uninterrupted support to four Central American countries under regional PRROs since 1999. During this time, WFP kept learning on how best to serve beneficiaries and support government emergency response. This learning process continued in 2016, and was reinforced by the findings and recommendations of the 2015 PRRO external evaluation conducted by Fundacion DARA Internacional, and was complemented by a series of programmatic reviews.

Most of the findings of the external evaluation showed that the operation had adequately addressed immediate hunger among affected populations and protected their livelihoods, the programme had adapted to the changing needs of beneficiaries, issues had been rightly positioned and resources mobilized at regional and international levels, and the relations with international organizations had improved.

The PRRO has demonstrated its advantages as a regional operation, yet further efforts are required to address particular country-specific issues. The PRRO has provided a flexible response to beneficiary needs and has continued to adapt to changing requirements. Different transfers have been used to address beneficiary needs and preferences. Cash transfers have proven to be an effective modality, resulting in a timely response, reducing logistical challenges, supporting local economies, increasing participatory approaches and strengthening social protection systems.

Additional work has been conducted in order to enhance beneficiary needs assessments, targeting and activity design, including enhanced emergency food security assessment tools. Early warning capacity building activities were also reviewed.

In Honduras, food assistance was provided proportional to the size of the household to better meet food security and nutrition needs. The initiative was successfully piloted and upscaled. In order to optimize interventions, Honduras conducted a comprehensive systematization of experiences on the different transfer modalities used. In Guatemala, the provision of food assistance proportional to the size of the household was not deemed appropriate.

The evaluation found a weak **gender approach** in the PRRO implementation. This *has been* strengthened by hiring of a regional gender expert to support local implementation and gender mainstreaming. As a result, field missions took place in Honduras and El Salvador, a food security and nutrition analysis according to gender and age was conducted and gender was mainstreamed in qualitative data collection methodologies. Guatemala and Nicaragua could already benefit from nationally recruited gender experts. As a follow-up to the regional gender strategy, the Regional Bureau launched a “Regional gender toolbox” with documents, tools, links and information in Spanish to facilitate the work on gender in the region. This toolbox, will complement the upcoming HQ Gender Toolkit.

More efforts have been done in **creating synergies with development projects** in order to respond to specific local needs and livelihoods of beneficiaries. To this extent, the WFP Regional Bureau has been supporting the update of Seasonal Livelihood Programming (SLP) calendars.

Further work was done linking **WFP emergency interventions to national social safety nets**. The response in Nicaragua clearly paves the way towards this direction. WFP supported the Government of Nicaragua through its largest social safety net programme, the National School Meals Programme, in order to provide schoolchildren with a second meal in municipalities most affected by the drought in the Dry Corridor. This represented an incentive for parents to keep their children in school and prevented a further deterioration of children's nutritional status. Furthermore, the school meals served as a powerful shock-responsive mechanism to respond to weather extremes and provide assistance to the most vulnerable populations during times of hardship, such as droughts, alleviating the economic burden and food needs at home.

WFP commissioned a Study on Shock-Responsive Social Protection in Latin America and the Caribbean, the first one of this type in the region, undertaken by Oxford Policy Management (OPM) with the objective to generate evidence and inform practice for improved emergency preparedness and response linked to more flexible national social protection systems. A literature review was completed and two of the three case studies have been conducted, including Guatemala covering Central America. The full study is expected to be completed in March 2017.

Last but not least, WFP has secured multi-year development funds to complement resilience building activities in the Dry Corridor of the four countries, to enhance the impact of the intervention.

To strengthen programme design of a successor operation with additional themes, WFP *is* currently working on an in-depth **Migration and Food Security Study**, conducted in coordination with the Inter-American Development Bank (IDB), the Organization of American States (OAS), the International Organization for Migration (IOM) and

International Fund for Agricultural Development (IFAD) as a follow up to the 2015 exploratory research on the links between migration, violence and food security. The 2016 study comprises a comprehensive analysis of primary and secondary data with a focus on the Dry Corridor of the Central American Northern Triangle (Guatemala, Honduras and El Salvador). Preliminary findings indicate a clear linkage between food security and migration which reinforces the need to more comprehensively address the underlying vulnerabilities throughout the Dry Corridor.

Capacity Strengthening

WFP has been supporting government priorities by upscaling its capacity strengthening activities in 2016 and 2017, with the aim of broadening the scope of social protection programmes to reduce food and nutrition security (Strategic Objective 2). These capacity strengthening activities, at regional and country levels, have been at the core of WFP interventions through the PRRO.

WFP **Guatemala** has been working with different government institutions in order to increase the capacity of the Government in food-assistance. Among them, the Ministry of Agriculture, Livestock and Food (MAGA) through its Rural Development Learning Centres (CADER) established at municipal level. CADER experts, or extension workers, have been trained by WFP on various subjects such as: the Three-Pronged Approach (3PA); the use of a tool, developed by WFP Guatemala, for the prioritization and selection of targeted families; and, on the process of data collection through GRASP (collection of data through mobile devices in real time) for the verification of asset creation. CADER experts are responsible for the planning, technical assistance, community trainings and supervision of household and community assets creation and maintenance.

Also, through a joint WFP-UNFPA initiative, to raise awareness among households on nutrition and hygiene aspects, these two agencies trained the Ministry of Social Development (MIDES) 'madres-guias' (already under its social protection network) on nutrition and hygiene aspects as well as on the use of cash for improved food security. In turn, MIDES approved the support of "madres guia" in providing nutrition education activities, at community level, to WFP participating families. The Municipal Woman's Offices supported capacity-building activities in leadership and self-esteem to madres-guia who then replicated these trainings to the PRRO's participating families.

Among other Guatemalan Government partners, is worth mentioning the Ministry of Health (MoH) whose staff at community level, followed-up on the nutritional status of acutely malnourished children and provided health care services including supplementation and vaccination. With the National Coordination for Disaster Reduction (CONRED) of Guatemala, WFP signed an agreement to support emergency response operations.

WFP **Honduras** has been providing technical assistance to the government's Permanent Contingency Commission (COPECO) -at national and sub-national level- in emergency preparedness through workshops related to warehouse management of food and non-food items. Several regional workshops have been carried out to collect inputs for updating the national contingency plan in collaboration with the Government and other UN agencies. With regards to logistics, the country office provided COPECO warehouses with telecommunication equipment in order to strengthen their response capacities in case of a natural disaster. Moreover, twenty-eight COPECO staff from eight departments participated in a three-day workshop on warehouse management held in December 2016 in Tegucigalpa.

Likewise, **WFP Nicaragua** has been working with the National System for Disaster Attention, Prevention and Mitigation (SINAPRED) to boost their emergency preparedness and response capacities at the national, regional and local level, providing trainings and capacity strengthening to both technical staff and community members. As part of the training programme, activities also included transferring of planning and monitoring tools, provision of equipment and supplies and trainings on the 72-hour Emergency Food Security Assessment for national institutions to ensure adequate response to emergencies. Additionally, WFP Nicaragua, in support of the Government, distributed school meals in those municipalities mostly affected by drought in the Dry Corridor. Nicaraguan Government used its largest social safety net programme, the National School Meals Programme, using an innovative approach to respond to the crisis situation resulted from drought. With WFP support, it provided school children with a second meal to generate incentives for sustained school attendance and prevent further nutritional deterioration. The school meal has highlighted the connection between nutrition and education since schools offer a platform to provide children with protection and nutritional support and, inversely, food generates key incentives to maintain children in school. The school meal has become an essential tool of the Government to reach people in need, especially in remote places, where schools are often the only local institution available. Additionally, the Government of Nicaragua provided family rations and is working on a long term strategy with the World Bank in order to sustainably respond to recurring crises.

In **El Salvador**, WFP trained The National Food Security and Nutritional Council (CONASAN) and the Technical Nutritional and Food Security Council (COTSAN) on WFP's Emergency Food Security Assessment (EFSA)

methodology to assess food security situation in the first 72 hours of a disaster. A total of 55 participants were trained. Also, WFP jointly with UNICEF, developed an emergency tool kit, with guidelines, on how to effectively respond to different kinds of disasters such as: volcanoes, earthquakes, tsunamis, floods. The tool kits were delivered to the National Civil Protection Agency to be used by all emergency commissions at departmental, municipal and community levels. The National Contingency plan in case of earthquake and tsunami was updated in 2016 in coordination with government institutions at the national level.

Figures and Indicators

Data Notes

© WFP/Miguel Vargas C. Market day after PRRO 200490 cash distribution in Chiquimula, Guatemala.

Overview of Project Beneficiary Information

Table 1: Overview of Project Beneficiary Information

Beneficiary Category	Planned (male)	Planned (female)	Planned (total)	Actual (male)	Actual (female)	Actual (total)	% Actual v. Planned (male)	% Actual v. Planned (female)	% Actual v. Planned (total)
Total Beneficiaries	318,287	353,043	671,330	529,476	584,571	1,114,047	166.4%	165.6%	165.9%
Total Beneficiaries (Commodity-Guatemala)	118,712	130,449	249,161	284,810	321,170	605,980	239.9%	246.2%	243.2%
Total Beneficiaries (Commodity-Honduras)	103,575	126,594	230,169	105,836	129,354	235,190	102.2%	102.2%	102.2%
Total Beneficiaries (Commodity-Nicaragua)	30,800	30,800	61,600	65,632	60,850	126,482	213.1%	197.6%	205.3%
Total Beneficiaries (Commodity-El Salvador)	65,200	65,200	130,400	73,198	73,197	146,395	112.3%	112.3%	112.3%
Commodity-Guatemala									
By Age-group:									
Children (under 5 years)	21,670	28,503	50,173	48,478	72,718	121,196	223.7%	255.1%	241.6%
Children (5-18 years)	50,133	50,889	101,022	121,196	121,196	242,392	241.7%	238.2%	239.9%
Adults (18 years plus)	46,909	51,057	97,966	115,136	127,256	242,392	245.4%	249.2%	247.4%
By Residence status:									
Residents	118,711	130,450	249,161	284,811	321,169	605,980	239.9%	246.2%	243.2%
Commodity-Honduras									
By Age-group:									
Children (under 5 years)	27,620	34,525	62,145	28,223	35,279	63,502	102.2%	102.2%	102.2%
Children (5-18 years)	34,525	41,430	75,955	35,279	42,334	77,613	102.2%	102.2%	102.2%
Adults (18 years plus)	41,430	50,639	92,069	42,334	51,741	94,075	102.2%	102.2%	102.2%
By Residence status:									
Residents	103,576	126,593	230,169	105,837	129,353	235,190	102.2%	102.2%	102.2%
Commodity-Nicaragua									
By Age-group:									
Children (under 5 years)	8,193	8,316	16,509	14,116	13,087	27,203	172.3%	157.4%	164.8%

Beneficiary Category	Planned (male)	Planned (female)	Planned (total)	Actual (male)	Actual (female)	Actual (total)	% Actual v. Planned (male)	% Actual v. Planned (female)	% Actual v. Planned (total)
Children (5-18 years)	10,164	10,287	20,451	51,516	47,763	99,279	506.8%	464.3%	485.4%
Adults (18 years plus)	12,443	12,197	24,640	-	-	-	-	-	-
By Residence status:									
Residents	30,800	30,800	61,600	65,632	60,850	126,482	213.1%	197.6%	205.3%
Commodity-El Salvador									
By Age-group:									
Children (under 5 years)	6,520	5,216	11,736	7,320	5,856	13,176	112.3%	112.3%	112.3%
Children (5-18 years)	22,168	20,864	43,032	24,887	23,423	48,310	112.3%	112.3%	112.3%
Adults (18 years plus)	36,512	39,120	75,632	40,991	43,918	84,909	112.3%	112.3%	112.3%
By Residence status:									
Residents	65,200	65,200	130,400	73,197	73,198	146,395	112.3%	112.3%	112.3%

Participants and Beneficiaries by Activity and Modality

Table 2: Beneficiaries by Activity and Modality

Activity	Planned (food)	Planned (CBT)	Planned (total)	Actual (food)	Actual (CBT)	Actual (total)	% Actual v. Planned (food)	% Actual v. Planned (CBT)	% Actual v. Planned (total)
Commodity-Guatemala									
General Distribution (GD)	15,680	62,720	78,400	39,920	-	39,920	254.6%	-	50.9%
Food-Assistance-for-Assets	74,199	135,761	209,960	449,155	119,590	566,060	605.3%	88.1%	269.6%
Commodity-Honduras									
General Distribution (GD)	10,240	40,960	51,200	2,000	-	2,000	19.5%	-	3.9%
Food-Assistance-for-Assets	50,650	153,920	204,570	11,750	221,440	233,190	23.2%	143.9%	114.0%
Commodity-Nicaragua									
General Distribution (GD)	43,700	-	43,700	126,482	-	126,482	289.4%	-	289.4%
Food-Assistance-for-Assets	39,750	-	39,750	-	-	-	-	-	-
Commodity-El Salvador									
General Distribution (GD)	53,040	35,380	88,400	48,895	140,230	142,330	92.2%	396.4%	161.0%
Food-Assistance-for-Assets	17,240	68,960	86,200	-	4,065	4,065	-	5.9%	4.7%

Annex: Participants by Activity and Modality

Activity	Planned (food)	Planned (CBT)	Planned (total)	Actual (food)	Actual (CBT)	Actual (total)	% Actual v. Planned (food)	% Actual v. Planned (CBT)	% Actual v. Planned (total)
Commodity-Guatemala									
General Distribution (GD)	3,136	12,544	15,680	7,984	-	7,984	254.6%	-	50.9%
Food-Assistance-for-Assets	14,840	27,152	41,992	89,831	23,918	113,212	605.3%	88.1%	269.6%
Commodity-Honduras									
General Distribution (GD)	2,048	8,192	10,240	400	-	400	19.5%	-	3.9%
Food-Assistance-for-Assets	10,130	30,784	40,914	2,350	44,288	46,638	23.2%	143.9%	114.0%
Commodity-Nicaragua									
General Distribution (GD)	8,740	-	8,740	126,482	-	126,482	1,447.2%	-	1,447.2%
Food-Assistance-for-Assets	7,950	-	7,950	-	-	-	-	-	-
Commodity-El Salvador									
General Distribution (GD)	10,608	7,072	17,680	9,779	28,046	28,466	92.2%	396.6%	161.0%
Food-Assistance-for-Assets	3,448	13,792	17,240	-	813	813	-	5.9%	4.7%

Participants and Beneficiaries by Activity (excluding nutrition)

Table 3: Participants and Beneficiaries by Activity (excluding nutrition)

Beneficiary Category	Planned (male)	Planned (female)	Planned (total)	Actual (male)	Actual (female)	Actual (total)	% Actual v. Planned (male)	% Actual v. Planned (female)	% Actual v. Planned (total)
Commodity-Guatemala									
General Distribution (GD)									
People participating in general distributions	7,683	7,997	15,680	3,912	4,072	7,984	50.9%	50.9%	50.9%
Total participants	7,683	7,997	15,680	3,912	4,072	7,984	50.9%	50.9%	50.9%
Total beneficiaries	36,848	41,552	78,400	19,561	20,359	39,920	53.1%	49.0%	50.9%
Food-Assistance-for-Assets									
People participating in asset-creation activities	20,576	21,416	41,992	55,474	57,738	113,212	269.6%	269.6%	269.6%
Total participants	20,576	21,416	41,992	55,474	57,738	113,212	269.6%	269.6%	269.6%
Total beneficiaries	98,681	111,279	209,960	266,048	300,012	566,060	269.6%	269.6%	269.6%
Commodity-Honduras									
General Distribution (GD)									
People participating in general distributions	4,608	5,632	10,240	180	220	400	3.9%	3.9%	3.9%
Total participants	4,608	5,632	10,240	180	220	400	3.9%	3.9%	3.9%

Beneficiary Category	Planned (male)	Planned (female)	Planned (total)	Actual (male)	Actual (female)	Actual (total)	% Actual v. Planned (male)	% Actual v. Planned (female)	% Actual v. Planned (total)
Total beneficiaries	23,040	28,160	51,200	900	1,100	2,000	3.9%	3.9%	3.9%
Food-Assistance-for-Assets									
People participating in asset-creation activities	18,411	22,503	40,914	20,987	25,651	46,638	114.0%	114.0%	114.0%
Total participants	18,411	22,503	40,914	20,987	25,651	46,638	114.0%	114.0%	114.0%
Total beneficiaries	92,057	112,513	204,570	104,936	128,254	233,190	114.0%	114.0%	114.0%
Commodity-Nicaragua									
General Distribution (GD)									
People participating in general distributions	4,369	4,371	8,740	65,632	60,850	126,482	1,502.2%	1,392.1%	1,447.2%
Total participants	4,369	4,371	8,740	65,632	60,850	126,482	1,502.2%	1,392.1%	1,447.2%
Total beneficiaries	21,849	21,851	43,700	65,632	60,850	126,482	300.4%	278.5%	289.4%
Food-Assistance-for-Assets									
People participating in asset-creation activities	3,975	3,975	7,950	-	-	-	-	-	-
Total participants	3,975	3,975	7,950	-	-	-	-	-	-
Total beneficiaries	19,875	19,875	39,750	-	-	-	-	-	-
Commodity-El Salvador									
General Distribution (GD)									
People participating in general distributions	8,486	9,194	17,680	13,664	14,802	28,466	161.0%	161.0%	161.0%
Total participants	8,486	9,194	17,680	13,664	14,802	28,466	161.0%	161.0%	161.0%
Total beneficiaries	44,200	44,200	88,400	71,165	71,165	142,330	161.0%	161.0%	161.0%
Food-Assistance-for-Assets									
People participating in asset-creation activities	8,275	8,965	17,240	390	423	813	4.7%	4.7%	4.7%
Total participants	8,275	8,965	17,240	390	423	813	4.7%	4.7%	4.7%
Total beneficiaries	43,100	43,100	86,200	2,032	2,033	4,065	4.7%	4.7%	4.7%

Project Indicators

Outcome Indicators

Outcome	Project End Target	Base Value	Previous Follow-up	Latest Follow-up
Commodity-Guatemala				

Outcome	Project End Target	Base Value	Previous Follow-up	Latest Follow-up
SO2 Support or restore food security and nutrition and establish or rebuild livelihoods in fragile settings and following emergencies				
Adequate food consumption reached or maintained over assistance period for targeted households				
FCS: percentage of households with poor Food Consumption Score				
<i>GUATEMALA, Project End Target: 2016.12, Households interviews, Base value: 2016.03, WFP programme monitoring, Households interviews, Previous Follow-up: 2016.07, WFP programme monitoring, Households interviews, Latest Follow-up: 2016.12, WFP programme monitoring, Households interviews</i>	=5.00	11.10	9.20	1.05
FCS: percentage of households with borderline Food Consumption Score				
<i>GUATEMALA, Project End Target: 2016.12, Households interviews, Base value: 2016.03, WFP programme monitoring, Households interviews, Previous Follow-up: 2016.07, WFP programme monitoring, Households interviews, Latest Follow-up: 2016.12, WFP programme monitoring, Households interviews</i>	=15.00	26.10	14.30	10.65
FCS: percentage of households with acceptable Food Consumption Score				
<i>GUATEMALA, Project End Target: 2016.12, Households interviews, Base value: 2016.03, WFP programme monitoring, Households interviews, Previous Follow-up: 2016.07, WFP programme monitoring, Households interviews, Latest Follow-up: 2016.12, WFP programme monitoring, Households interviews</i>	=80.00	62.80	76.50	88.30
FCS: percentage of households with poor Food Consumption Score (female-headed)				
<i>GUATEMALA, Project End Target: 2016.12, Households interviews, Base value: 2016.03, WFP programme monitoring, Households interviews, Previous Follow-up: 2016.07, WFP programme monitoring, Households interviews, Latest Follow-up: 2016.12, WFP programme monitoring, Households interviews</i>	=5.00	9.00	13.00	1.60
FCS: percentage of households with poor Food Consumption Score (male-headed)				
<i>GUATEMALA, Project End Target: 2016.12, Households interviews, Base value: 2016.03, WFP programme monitoring, Households interviews, Previous Follow-up: 2016.07, WFP programme monitoring, Households interviews, Latest Follow-up: 2016.12, WFP programme monitoring, Households interviews</i>	=5.00	12.10	6.20	0.50
FCS: percentage of households with borderline Food Consumption Score (female-headed)				
<i>GUATEMALA, Project End Target: 2016.12, Households interviews, Base value: 2016.03, WFP programme monitoring, Households interviews, Previous Follow-up: 2016.07, WFP programme monitoring, Households interviews, Latest Follow-up: 2016.12, WFP programme monitoring, Households interviews</i>	=15.00	27.00	18.80	10.60
FCS: percentage of households with borderline Food Consumption Score (male-headed)				
<i>GUATEMALA, Project End Target: 2016.12, Households interviews, Base value: 2016.03, WFP programme monitoring, Households interviews, Previous Follow-up: 2016.07, WFP programme monitoring, Households interviews, Latest Follow-up: 2016.12, WFP programme monitoring, Households interviews</i>	=15.00	25.70	10.80	10.70
FCS: percentage of households with acceptable Food Consumption Score (female-headed)				
<i>GUATEMALA, Project End Target: 2016.12, Households interviews, Base value: 2016.03, WFP programme monitoring, Households interviews, Previous Follow-up: 2016.07, WFP programme monitoring, Households interviews, Latest Follow-up: 2016.12, WFP programme monitoring, Households interviews</i>	=80.00	64.00	68.20	87.80

Outcome	Project End Target	Base Value	Previous Follow-up	Latest Follow-up
FCS: percentage of households with acceptable Food Consumption Score (male-headed)				
GUATEMALA, Project End Target: 2016.12, Households interviews, Base value: 2016.03, WFP programme monitoring, Households interviews, Previous Follow-up: 2016.07, WFP programme monitoring, Households interviews, Latest Follow-up: 2016.12, WFP programme monitoring, Households interviews	=80.00	62.20	83.00	88.80
Diet Diversity Score				
GUATEMALA, Project End Target: 2016.12, Households interviews, Base value: 2016.03, WFP programme monitoring, Households interviews, Previous Follow-up: 2016.07, WFP programme monitoring, Households interviews, Latest Follow-up: 2016.12, WFP programme monitoring, Households interviews	>6.00	4.90	6.12	6.45
Diet Diversity Score (female-headed households)				
GUATEMALA, Project End Target: 2016.12, Households interviews, Base value: 2016.03, WFP programme monitoring, Households interviews, Previous Follow-up: 2016.07, WFP programme monitoring, Households interviews, Latest Follow-up: 2016.12, WFP programme monitoring, Households interviews	>6.00	4.86	5.80	6.31
Diet Diversity Score (male-headed households)				
GUATEMALA, Project End Target: 2016.12, Households interviews, Base value: 2016.03, WFP programme monitoring, Households interviews, Previous Follow-up: 2016.07, WFP programme monitoring, Households interviews, Latest Follow-up: 2016.12, WFP programme monitoring, Households interviews	>6.00	4.92	6.37	6.59
CSI (Food): Coping Strategy Index (average)				
GUATEMALA, Project End Target: 2016.12, Households interviews, Base value: 2016.03, WFP programme monitoring, Households interviews, Previous Follow-up: 2016.07, WFP programme monitoring, Households interviews, Latest Follow-up: 2016.12, WFP programme monitoring, Households interviews	=7.00	14.36	8.97	2.20
CSI (Asset Depletion): Coping Strategy Index (average)				
GUATEMALA, Project End Target: 2016.12, Households interviews, Base value: 2016.03, WFP programme monitoring, Households interviews, Previous Follow-up: 2016.07, WFP programme monitoring, Households interviews, Latest Follow-up: 2016.12, WFP programme monitoring, Households interviews	=6.00	7.68	9.14	5.53
Improved access to assets and/or basic services, including community and market infrastructure				
CAS: percentage of communities with an increased Asset Score				
GUATEMALA, Project End Target: 2016.12, Focus groups interviews, Base value: 2016.03, WFP programme monitoring, Focus group interviews, Latest Follow-up: 2016.12, WFP programme monitoring, Focus Groups interviews	=80.00	0.00	-	83.87
Commodity-Honduras				
SO1 Save lives and protect livelihoods in emergencies				
Stabilized or improved food consumption over assistance period for targeted households and/or individuals				
FCS: percentage of households with poor Food Consumption Score				
ALL PRRO HN LOCATIONS, Project End Target: 2016.12, Base value: 2015.11, WFP survey, EFSA, Latest Follow-up: 2016.12, WFP programme monitoring, PDM	=1.40	7.10	-	6.90

Outcome	Project End Target	Base Value	Previous Follow-up	Latest Follow-up
FCS: percentage of households with borderline Food Consumption Score				
<i>ALL PRRO HN LOCATIONS, Project End Target: 2016.12, PDM, Base value: 2015.11, WFP survey, EFSA, Latest Follow-up: 2016.12, WFP programme monitoring, PDM</i>	=8.00	10.40	-	8.30
FCS: percentage of households with acceptable Food Consumption Score				
<i>ALL PRRO HN LOCATIONS, Project End Target: 2016.12, PDM, Base value: 2015.11, WFP survey, EFSA, Latest Follow-up: 2016.12, WFP programme monitoring, PDM</i>	=90.60	82.50	-	84.80
FCS: percentage of households with poor Food Consumption Score (female-headed)				
<i>ALL PRRO HN LOCATIONS, Project End Target: 2016.12, EFSA, Base value: 2015.11, WFP survey, EFSA, Latest Follow-up: 2016.12, WFP programme monitoring, PDM</i>	=1.40	7.20	-	9.20
FCS: percentage of households with poor Food Consumption Score (male-headed)				
<i>ALL PRRO HN LOCATIONS, Project End Target: 2016.12, PDM, Base value: 2015.11, WFP survey, EFSA, Latest Follow-up: 2016.12, WFP programme monitoring, PDM</i>	=1.40	7.00	-	1.60
FCS: percentage of households with borderline Food Consumption Score (female-headed)				
<i>ALL PRRO HN LOCATIONS, Project End Target: 2016.12, PDM, Base value: 2015.11, WFP programme monitoring, PDM, Latest Follow-up: 2016.12, WFP programme monitoring, PDM</i>	=8.00	14.40	-	10.50
FCS: percentage of households with borderline Food Consumption Score (male-headed)				
<i>ALL PRRO HN LOCATIONS, Project End Target: 2016.12, PDM, Base value: 2015.11, WFP survey, EFSA, Latest Follow-up: 2016.12, WFP programme monitoring, PDM</i>	=8.00	9.60	-	3.10
FCS: percentage of households with acceptable Food Consumption Score (female-headed)				
<i>ALL PRRO HN LOCATIONS, Project End Target: 2016.12, PDM, Base value: 2015.11, WFP survey, EFSA, Latest Follow-up: 2016.12, WFP programme monitoring, PDM</i>	=90.60	78.40	-	80.30
FCS: percentage of households with acceptable Food Consumption Score (male-headed)				
<i>ALL PRRO HN LOCATIONS, Project End Target: 2016.12, PDM, Base value: 2015.11, WFP survey, EFSA, Latest Follow-up: 2016.12, WFP programme monitoring, PDM</i>	=90.60	83.40	-	95.30
Diet Diversity Score				
<i>ALL PRRO HN LOCATIONS, Project End Target: 2016.12, PDM, Base value: 2015.11, WFP survey, EFSA, Latest Follow-up: 2016.12, WFP programme monitoring, PDM</i>	>5.90	5.55	-	6.20
Diet Diversity Score (female-headed households)				
<i>ALL PRRO HN LOCATIONS, Project End Target: 2016.12, PDM, Base value: 2015.11, WFP survey, EFSA, Latest Follow-up: 2016.12, WFP programme monitoring, PDM</i>	=5.80	5.50	-	5.80
Diet Diversity Score (male-headed households)				
<i>ALL PRRO HN LOCATIONS, Project End Target: 2016.12, PDM, Base value: 2015.11, WFP survey, EFSA, Latest Follow-up: 2016.12, WFP programme monitoring, PDM</i>	=5.80	5.60	-	6.30
CSI (Food): Coping Strategy Index (average)				
<i>ALL PRRO HN LOCATIONS, Project End Target: 2016.12, PDM, Base value: 2015.11, WFP survey, EFSA, Latest Follow-up: 2016.12, WFP programme monitoring</i>	=14.10	14.40	-	16.00

Outcome	Project End Target	Base Value	Previous Follow-up	Latest Follow-up
CSI (Asset Depletion): Coping Strategy Index (average)				
<i>ALL PRRO HN LOCATIONS, Project End Target: 2016.12, PDM, Base value: 2015.11, WFP survey, EFSA, Latest Follow-up: 2016.12, WFP programme monitoring</i>	=5.80	6.10	-	4.90
Commodity-El Salvador				
SO1 Save lives and protect livelihoods in emergencies				
Stabilized or improved food consumption over assistance period for targeted households and/or individuals				
FCS: percentage of households with poor Food Consumption Score				
<i>EL SALVADOR, Project End Target: 2016.12, Base value: 2016.04, WFP programme monitoring, Households interviews, Latest Follow-up: 2016.06, WFP programme monitoring, Household Interviews</i>	=3.00	7.00	-	0.81
FCS: percentage of households with borderline Food Consumption Score				
<i>EL SALVADOR, Project End Target: 2016.12, Base value: 2016.04, WFP programme monitoring, Households interviews, Latest Follow-up: 2016.06, WFP programme monitoring, Household Interviews</i>	=7.00	30.00	-	3.19
FCS: percentage of households with acceptable Food Consumption Score				
<i>EL SALVADOR, Project End Target: 2016.12, Base value: 2016.04, WFP programme monitoring, Household Interviews, Latest Follow-up: 2016.06, WFP programme monitoring, Household Interviews</i>	=90.00	63.00	-	96.00
FCS: percentage of households with poor Food Consumption Score (female-headed)				
<i>EL SALVADOR, Project End Target: 2016.12, Base value: 2016.04, WFP programme monitoring, Households interviews, Latest Follow-up: 2016.06, WFP programme monitoring, Household Interviews</i>	=3.00	7.03	-	0.44
FCS: percentage of households with poor Food Consumption Score (male-headed)				
<i>EL SALVADOR, Project End Target: 2016.12, Base value: 2016.04, WFP programme monitoring, Households interviews, Latest Follow-up: 2016.06, WFP programme monitoring, Household Interviews</i>	=3.00	6.56	-	1.34
FCS: percentage of households with borderline Food Consumption Score (female-headed)				
<i>EL SALVADOR, Project End Target: 2016.12, Base value: 2016.04, WFP programme monitoring, Households interviews, Latest Follow-up: 2016.06, WFP programme monitoring, Household Interviews</i>	=7.00	31.32	-	1.76
FCS: percentage of households with borderline Food Consumption Score (male-headed)				
<i>EL SALVADOR, Project End Target: 2016.12, Base value: 2016.04, WFP programme monitoring, Households interviews, Latest Follow-up: 2016.06, WFP programme monitoring, Household Interviews</i>	=7.00	29.00	-	5.37
FCS: percentage of households with acceptable Food Consumption Score (female-headed)				
<i>EL SALVADOR, Project End Target: 2016.12, Base value: 2016.04, WFP programme monitoring, Household Interviews, Latest Follow-up: 2016.06, WFP programme monitoring, Household Interviews</i>	=90.00	61.65	-	97.80

Outcome	Project End Target	Base Value	Previous Follow-up	Latest Follow-up
FCS: percentage of households with acceptable Food Consumption Score (male-headed)				
<i>EL SALVADOR, Project End Target: 2016.12, Base value: 2016.04, WFP programme monitoring, Household Interviews, Latest Follow-up: 2016.06, WFP programme monitoring, Household Interviews</i>	=90.00	64.44	-	93.29
Diet Diversity Score				
<i>EL SALVADOR, Project End Target: 2016.12, Base value: 2016.04, WFP programme monitoring, Households interviews, Latest Follow-up: 2016.06, WFP programme monitoring, Household Interviews</i>	=6.00	5.66	-	6.62
Diet Diversity Score (female-headed households)				
<i>EL SALVADOR, Project End Target: 2016.12, Base value: 2016.04, WFP programme monitoring, Households interviews, Latest Follow-up: 2016.06, WFP programme monitoring, Household Interviews</i>	=6.00	5.58	-	6.71
Diet Diversity Score (male-headed households)				
<i>EL SALVADOR, Project End Target: 2016.12, Base value: 2016.04, WFP programme monitoring, Households interviews, Latest Follow-up: 2016.06, WFP programme monitoring, Household Interviews</i>	=6.00	5.76	-	6.48
CSI (Food): Coping Strategy Index (average)				
<i>EL SALVADOR, Project End Target: 2016.12, Base value: 2016.04, WFP programme monitoring, Households interviews, Latest Follow-up: 2016.06, WFP programme monitoring, Household Interviews</i>	=8.00	12.77	-	6.54
CSI (Asset Depletion): Coping Strategy Index (average)				
<i>EL SALVADOR, Project End Target: 2016.12, Base value: 2016.04, WFP programme monitoring, Household Interviews, Latest Follow-up: 2016.06, WFP programme monitoring, Household Interviews</i>	=4.50	7.47	-	3.43

Output Indicators

Output	Unit	Planned	Actual	% Actual vs. Planned
Commodity-Guatemala				
SO2: Food-Assistance-for-Assets				
Hectares (ha) of cultivated land treated and conserved with physical soil and water conservation measures only	Ha	39,586	38,466	97.2%
Hectares (ha) of forests planted and established	Ha	1,205	1,197	99.3%
Hectares (ha) of forests restored	Ha	175	172	98.2%
Hectares (ha) of land cleared	Ha	25,095	25,085	100.0%
Hectares of small-scale irrigation system developed	Ha	20	29	146.0%
Kilometers (km) of drinking water supply line constructed/rehabilitated	Km	231	230	99.6%
Kilometers (km) of live fencing created	Km	42	42	99.5%
Kilometres (km) of mountain trails constructed	Km	11	11	100.0%

Output	Unit	Planned	Actual	% Actual vs. Planned
Kilometres (km) of mountain trails rehabilitated	Km	83	83	99.4%
Number of assets built, restored or maintained by targeted communities and individuals	asset	106	103	97.2%
Number of assisted communities with improved physical infrastructures to mitigate the impact of shocks, in place as a result of project assistance	community	44	44	100.0%
Number of classrooms constructed	classroom	7	7	100.0%
Number of culverts and drainage controls repaired	item	37	36	97.3%
Number of excavated community water ponds for livestock uses constructed (3000-15,000 cbmt)	water pond	25	25	100.0%
Number of family gardens established	garden	7,785	7,771	99.8%
Number of health centres constructed/rehabilitated	health center	1	1	100.0%
Number of latrines rehabilitated or constructed	latrine	2,445	2,428	99.3%
Number of new nurseries established	nursery	865	856	98.9%
Number of people trained (Skills: Livelihood technologies)	individual	37,058	36,834	99.4%
Number of people trained in hygiene promotion	individual	300	253	84.3%
Number of shallow wells constructed	shallow well	2,715	2,703	99.6%
Number of villages assisted	centre/site	2,071	2,046	98.8%
Number of water filters distributed to households	unit	12,023	11,719	97.5%
Tonnes of compost manure produced	Mt	6,863	6,688	97.5%
Commodity-Honduras				
SO2: Food-Assistance-for-Assets				
Hectares (ha) of cultivated land treated and conserved with physical soil and water conservation measures only	Ha	4,386	3,800	86.6%
Hectares (ha) of forests planted and established	Ha	100	96	96.0%
Hectares (ha) of land cultivated	Ha	2,100	1,765	84.0%
Kilometres (km) of feeder roads built and maintained	Km	200	180	90.0%
Number of assisted communities with improved physical infrastructures to mitigate the impact of shocks, in place as a result of project assistance	community	700	652	93.1%
Number of community gardens established	garden	125	91	72.8%
Number of family gardens established	garden	3,400	3,308	97.3%
Number of farm ponds constructed for micro irrigation and lined (120 cbmt)	water pond	150	135	90.0%
Number of health centres constructed/rehabilitated	health center	30	23	76.7%
Number of households who received fuel efficient stoves	household	80	78	97.5%
Number of houses constructed/rehabilitated	house	4,900	4,100	83.7%
Number of latrines rehabilitated or constructed	latrine	223	151	67.7%
Number of tree seedlings produced	tree seedling	90,000	79,825	88.7%
Commodity-Nicaragua				

Output	Unit	Planned	Actual	% Actual vs. Planned
SO1: Capacity Development - Emergency Preparedness				
Number of female government/national partner staff receiving technical assistance and training	individual	700	738	105.4%
Number of government/national partner staff receiving technical assistance and training	individual	1,400	1,487	106.2%
Number of male government/national partner staff receiving technical assistance and training	individual	700	750	107.1%
Quantity of equipment (computers, furniture) distributed	item	15	17	113.3%
SO1: General Distribution (GD)				
Number of institutional sites assisted	site	1,900	1,988	104.6%
SO2: Capacity Development - Emergency Preparedness				
Number of technical support activities provided on food security monitoring and food assistance	activity	7	7	100.0%
Quantity of tablets/phones distributed	item	10	10	100.0%
WFP expenditures for technical assistance to strengthen national capacity	US\$	33,000	33,185	100.6%
Commodity-EI Salvador				
SO1: General Distribution (GD)				
Number of timely food distributions as per schedule	instance	100	13	13.0%
SO2: Food-Assistance-for-Assets				
Kilometers (km) of live fencing created	Km	1	1	100.0%
Kilometres (km) of feeder roads rehabilitated and maintained	Km	1	4	400.0%
Number of bridges rehabilitated	bridge	1	3	300.0%
Number of community gardens established	garden	200	31	15.5%
Number of family gardens established	garden	2,000	430	21.5%
Number of kitchens or food storage rooms rehabilitated or constructed	kitchen/food storage room	100	7	7.0%
Number of latrines rehabilitated or constructed	latrine	1	20	2,000.0%
Number of new nurseries established	nursery	1	5	500.0%

Gender Indicators

Cross-cutting Indicators	Project End Target	Base Value	Previous Follow-up	Latest Follow-up
Commodity-EI Salvador				
Proportion of households where females and males together make decisions over the use of cash, voucher or food				
<i>EL SALVADOR, General Distribution (GD), Project End Target: 2016.12, Base value: 2016.04, Latest Follow-up: 2016.06</i>	=70.00	40.00	-	50.00

Cross-cutting Indicators	Project End Target	Base Value	Previous Follow-up	Latest Follow-up
Proportion of households where females make decisions over the use of cash, voucher or food				
<i>EL SALVADOR, General Distribution (GD), Project End Target: 2016.12, Base value: 2016.04, Latest Follow-up: 2016.06</i>	=15.00	38.00	-	27.00
Proportion of households where males make decisions over the use of cash, voucher or food				
<i>EL SALVADOR, General Distribution (GD), Project End Target: 2016.12, Base value: 2016.04, Latest Follow-up: 2016.06</i>	=15.00	22.00	-	23.00
Proportion of women beneficiaries in leadership positions of project management committees				
<i>EL SALVADOR, General Distribution (GD), Project End Target: 2016.12, Base value: 2016.04, Latest Follow-up: 2016.06</i>	=60.00	36.00	-	58.00
Proportion of women project management committee members trained on modalities of food, cash, or voucher distribution				
<i>EL SALVADOR, General Distribution (GD), Project End Target: 2016.12, Base value: 2016.04, Latest Follow-up: 2016.06</i>	=100.00	40.00	-	93.00
Commodity-Guatemala				
Proportion of households where females and males together make decisions over the use of cash, voucher or food				
<i>GUATEMALA, Food-Assistance-for-Assets, Project End Target: 2016.12, Base value: 2016.07, Latest Follow-up: 2016.12</i>	=33.00	29.00	-	1.00
Proportion of households where females make decisions over the use of cash, voucher or food				
<i>GUATEMALA, Food-Assistance-for-Assets, Project End Target: 2016.12, Base value: 2016.07, Latest Follow-up: 2016.12</i>	=34.00	68.00	-	74.00
Proportion of households where males make decisions over the use of cash, voucher or food				
<i>GUATEMALA, Food-Assistance-for-Assets, Project End Target: 2016.12, Base value: 2016.07, Latest Follow-up: 2016.12</i>	=33.00	3.00	-	25.00
Proportion of women beneficiaries in leadership positions of project management committees				
<i>GUATEMALA, Food-Assistance-for-Assets, Project End Target: 2016.12, Base value: 2016.07, Latest Follow-up: 2016.12</i>	>50.00	57.00	-	69.00
Proportion of women project management committee members trained on modalities of food, cash, or voucher distribution				
<i>GUATEMALA, Food-Assistance-for-Assets, Project End Target: 2016.12, Base value: 2016.07, Latest Follow-up: 2016.12</i>	>60.00	60.00	-	76.00
Commodity-Honduras				
Proportion of households where females and males together make decisions over the use of cash, voucher or food				
<i>HONDURAS, Food-Assistance-for-Assets, Project End Target: 2016.12, Base value: 2016.04, Latest Follow-up: 2016.12</i>	=50.00	40.00	-	50.00

Cross-cutting Indicators	Project End Target	Base Value	Previous Follow-up	Latest Follow-up
Proportion of households where females make decisions over the use of cash, voucher or food				
<i>HONDURAS, Food-Assistance-for-Assets, Project End Target: 2016.12, Base value: 2016.04, Latest Follow-up: 2016.12</i>	=30.00	40.00	-	40.00
Proportion of households where males make decisions over the use of cash, voucher or food				
<i>HONDURAS, Food-Assistance-for-Assets, Project End Target: 2016.12, Base value: 2016.04, Latest Follow-up: 2016.12</i>	=20.00	20.00	-	10.00
Proportion of women beneficiaries in leadership positions of project management committees				
<i>HONDURAS, Food-Assistance-for-Assets, Project End Target: 2016.12, Base value: 2016.04, Latest Follow-up: 2016.12</i>	=60.00	50.00	-	60.00
Proportion of women project management committee members trained on modalities of food, cash, or voucher distribution				
<i>HONDURAS, Food-Assistance-for-Assets, Project End Target: 2016.12, Base value: 2016.04, Latest Follow-up: 2016.12</i>	>60.00	40.00	-	52.00
Commodity-Nicaragua				
Proportion of women project management committee members trained on modalities of food, cash, or voucher distribution				
<i>NICARAGUA, General Distribution (GD), Project End Target: 2016.12, Base value: 2015.12, Latest Follow-up: 2016.12</i>	>60.00	0.00	-	48.00

Protection and Accountability to Affected Populations Indicators

Cross-cutting Indicators	Project End Target	Base Value	Previous Follow-up	Latest Follow-up
Commodity-El Salvador				
Proportion of assisted people (men) informed about the programme (who is included, what people will receive, where people can complain)				
<i>EL SALVADOR, General Distribution (GD), Project End Target: 2016.12, Base value: 2016.04, Latest Follow-up: 2016.06</i>	=100.00	78.00	-	94.00
Proportion of assisted people (men) who do not experience safety problems travelling to, from and/or at WFP programme site				
<i>EL SALVADOR, General Distribution (GD), Project End Target: 2016.12, Base value: 2016.04, Latest Follow-up: 2016.06</i>	=100.00	88.00	-	98.00
Proportion of assisted people (women) informed about the programme (who is included, what people will receive, where people can complain)				
<i>EL SALVADOR, General Distribution (GD), Project End Target: 2016.12, Base value: 2016.04, Latest Follow-up: 2016.06</i>	=100.00	82.00	-	98.00

Cross-cutting Indicators	Project End Target	Base Value	Previous Follow-up	Latest Follow-up
Proportion of assisted people (women) who do not experience safety problems travelling to, from and/or at WFP programme sites				
<i>EL SALVADOR, General Distribution (GD), Project End Target: 2016.12, Base value: 2016.04, Latest Follow-up: 2016.06</i>	=100.00	92.00	-	100.00
Proportion of assisted people informed about the programme (who is included, what people will receive, where people can complain)				
<i>EL SALVADOR, General Distribution (GD), Project End Target: 2016.12, Base value: 2016.04, Latest Follow-up: 2016.06</i>	=100.00	80.00	-	96.00
Proportion of assisted people who do not experience safety problems travelling to, from and/or at WFP programme site				
<i>EL SALVADOR, General Distribution (GD), Project End Target: 2016.12, Base value: 2016.04, Latest Follow-up: 2016.06</i>	=100.00	90.00	-	99.00
Commodity-Guatemala				
Proportion of assisted people (men) informed about the programme (who is included, what people will receive, where people can complain)				
<i>GUATEMALA, Food-Assistance-for-Assets, Project End Target: 2016.12, Base value: 2016.07, Latest Follow-up: 2016.12</i>	=80.00	74.00	-	79.00
Proportion of assisted people (men) who do not experience safety problems travelling to, from and/or at WFP programme site				
<i>GUATEMALA, Food-Assistance-for-Assets, Project End Target: 2016.12, Base value: 2016.07, Latest Follow-up: 2016.12</i>	=90.00	100.00	-	100.00
Proportion of assisted people (women) informed about the programme (who is included, what people will receive, where people can complain)				
<i>GUATEMALA, Food-Assistance-for-Assets, Project End Target: 2016.12, Base value: 2016.07, Latest Follow-up: 2016.12</i>	=80.00	76.00	-	79.00
Proportion of assisted people (women) who do not experience safety problems travelling to, from and/or at WFP programme sites				
<i>GUATEMALA, Food-Assistance-for-Assets, Project End Target: 2016.12, Base value: 2016.07, Latest Follow-up: 2016.12</i>	=90.00	99.70	-	99.70
Proportion of assisted people informed about the programme (who is included, what people will receive, where people can complain)				
<i>GUATEMALA, Food-Assistance-for-Assets, Project End Target: 2016.12, Base value: 2016.07, Latest Follow-up: 2016.12</i>	=80.00	75.00	-	79.00
Proportion of assisted people who do not experience safety problems travelling to, from and/or at WFP programme site				
<i>GUATEMALA, Food-Assistance-for-Assets, Project End Target: 2016.12, Base value: 2016.07, Latest Follow-up: 2016.12</i>	=90.00	99.85	-	99.85
Commodity-Honduras				
Proportion of assisted people (men) informed about the programme (who is included, what people will receive, where people can complain)				
<i>HONDURAS, Food-Assistance-for-Assets, Project End Target: 2016.12, Base value: 2016.04, Latest Follow-up: 2016.12</i>	>90.00	97.70	-	60.00

Cross-cutting Indicators	Project End Target	Base Value	Previous Follow-up	Latest Follow-up
Proportion of assisted people (men) who do not experience safety problems travelling to, from and/or at WFP programme site				
<i>HONDURAS, Food-Assistance-for-Assets, Project End Target: 2016.12, Base value: 2016.04, Latest Follow-up: 2016.12</i>	>100.00	90.00	-	100.00
Proportion of assisted people (women) informed about the programme (who is included, what people will receive, where people can complain)				
<i>HONDURAS, Food-Assistance-for-Assets, Project End Target: 2016.12, Base value: 2016.04, Latest Follow-up: 2016.12</i>	>90.00	100.00	-	100.00
Proportion of assisted people (women) who do not experience safety problems travelling to, from and/or at WFP programme sites				
<i>HONDURAS, Food-Assistance-for-Assets, Project End Target: 2016.12, Base value: 2016.04, Latest Follow-up: 2016.12</i>	>100.00	100.00	-	100.00
Proportion of assisted people informed about the programme (who is included, what people will receive, where people can complain)				
<i>HONDURAS, Food-Assistance-for-Assets, Project End Target: 2016.12, Base value: 2016.04, Latest Follow-up: 2016.12</i>	=90.00	98.50	-	80.00
Proportion of assisted people who do not experience safety problems travelling to, from and/or at WFP programme site				
<i>HONDURAS, Food-Assistance-for-Assets, Project End Target: 2016.12, Base value: 2016.04, Latest Follow-up: 2016.12</i>	=100.00	95.00	-	100.00

Partnership Indicators

Cross-cutting Indicators	Project End Target	Latest Follow-up
Commodity-El Salvador		
Amount of complementary funds provided to the project by partners (including NGOs, civil society, private sector organizations, international financial institutions and regional development banks)		
<i>EL SALVADOR, General Distribution (GD), Project End Target: 2016.12, Latest Follow-up: 2016.06</i>	=137,922.00	26,879.00
Number of partner organizations that provide complementary inputs and services		
<i>EL SALVADOR, General Distribution (GD), Project End Target: 2016.12, Latest Follow-up: 2016.06</i>	=6.00	4.00
Proportion of project activities implemented with the engagement of complementary partners		
<i>EL SALVADOR, General Distribution (GD), Project End Target: 2016.12, Latest Follow-up: 2016.06</i>	=100.00	100.00
Commodity-Guatemala		
Amount of complementary funds provided to the project by partners (including NGOs, civil society, private sector organizations, international financial institutions and regional development banks)		
<i>GUATEMALA, Food-Assistance-for-Assets, Project End Target: 2016.12, Latest Follow-up: 2016.12</i>	>2,000,000.00	4,498,288.00
Number of partner organizations that provide complementary inputs and services		
<i>GUATEMALA, Food-Assistance-for-Assets, Project End Target: 2016.12, Latest Follow-up: 2016.12</i>	>3.00	5.00
Proportion of project activities implemented with the engagement of complementary partners		
<i>GUATEMALA, Food-Assistance-for-Assets, Project End Target: 2016.12, Latest Follow-up: 2016.12</i>	=80.00	90.00

Cross-cutting Indicators	Project End Target	Latest Follow-up
Commodity-Honduras		
Amount of complementary funds provided to the project by partners (including NGOs, civil society, private sector organizations, international financial institutions and regional development banks)		
<i>HONDURAS, Food-Assistance-for-Assets, Project End Target: 2016.12, Latest Follow-up: 2016.12</i>	=190,000.00	220,000.00
Number of partner organizations that provide complementary inputs and services		
<i>HONDURAS, Food-Assistance-for-Assets, Project End Target: 2016.12, Latest Follow-up: 2016.12</i>	=20.00	20.00
Proportion of project activities implemented with the engagement of complementary partners		
<i>HONDURAS, Food-Assistance-for-Assets, Project End Target: 2016.12, Latest Follow-up: 2016.12</i>	=100.00	100.00
Commodity-Nicaragua		
Number of partner organizations that provide complementary inputs and services		
<i>NICARAGUA, General Distribution (GD), Project End Target: 2016.12, Latest Follow-up: 2016.12</i>	>1.00	2.00
Proportion of project activities implemented with the engagement of complementary partners		
<i>NICARAGUA, General Distribution (GD), Project End Target: 2016.12, Latest Follow-up: 2016.12</i>	=100.00	100.00

Resource Inputs from Donors

Resource Inputs from Donors

Donor	Cont. Ref. No.	Commodity	Purchased in 2016 (mt)	
			In-Kind	Cash
Canada	CAN-C-00529-01	Maize	-	122
MULTILATERAL	MULTILATERAL	Beans	-	128
USA	USA-C-01069-04	Maize	-	221
USA	USA-C-01160-01	Corn Soya Blend	25	-
		Total	25	471