



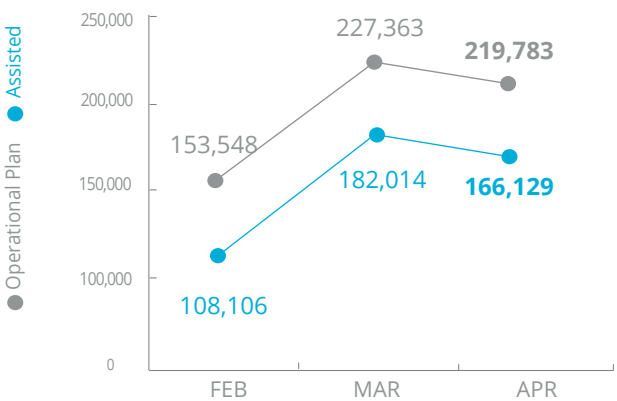
World Food Programme

Burkina Faso

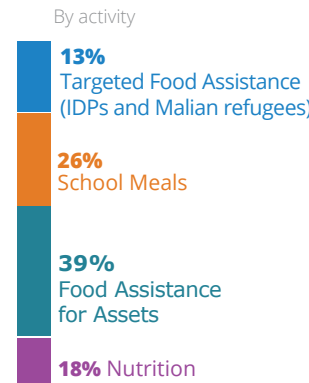


PEOPLE ASSISTED

Burkina Faso Country Strategic Plan (CSP)



OPERATIONAL PROFILE



SOURCE: WFP, 30 MAY 2019



FUNDING

Burkina Faso Country Strategic Plan (CSP)

June - November 2019

Net funding requirement

US\$43.1m*

2019 EMERGENCY PLAN (FEBRUARY 2019)

37%

Allocated Contributions: US\$37.7m

Requirement: US\$62.6m

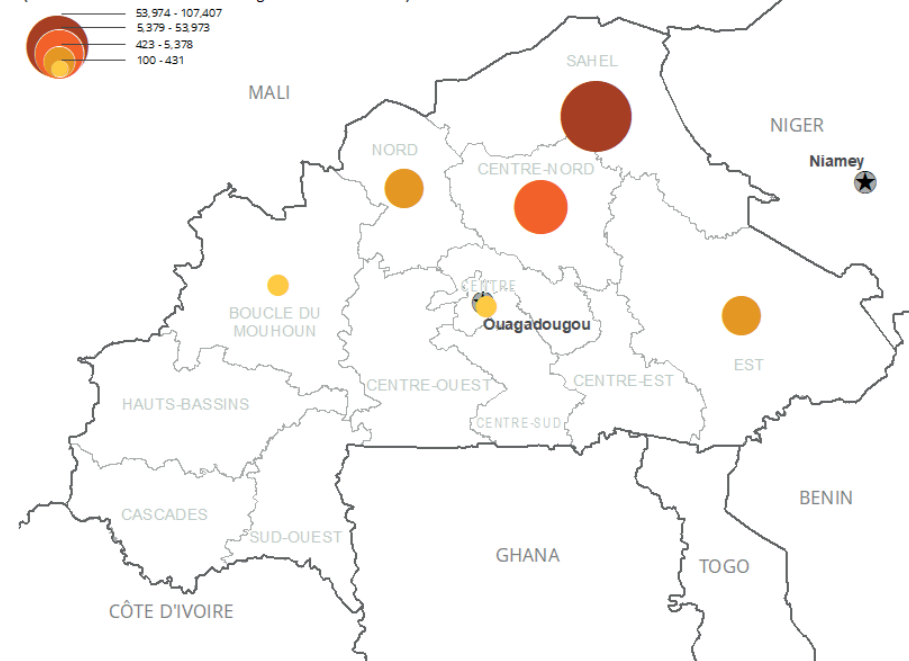
* including Budget Revision 3 and related scale-up plan

SOURCE: WFP, 19 JUNE 2019

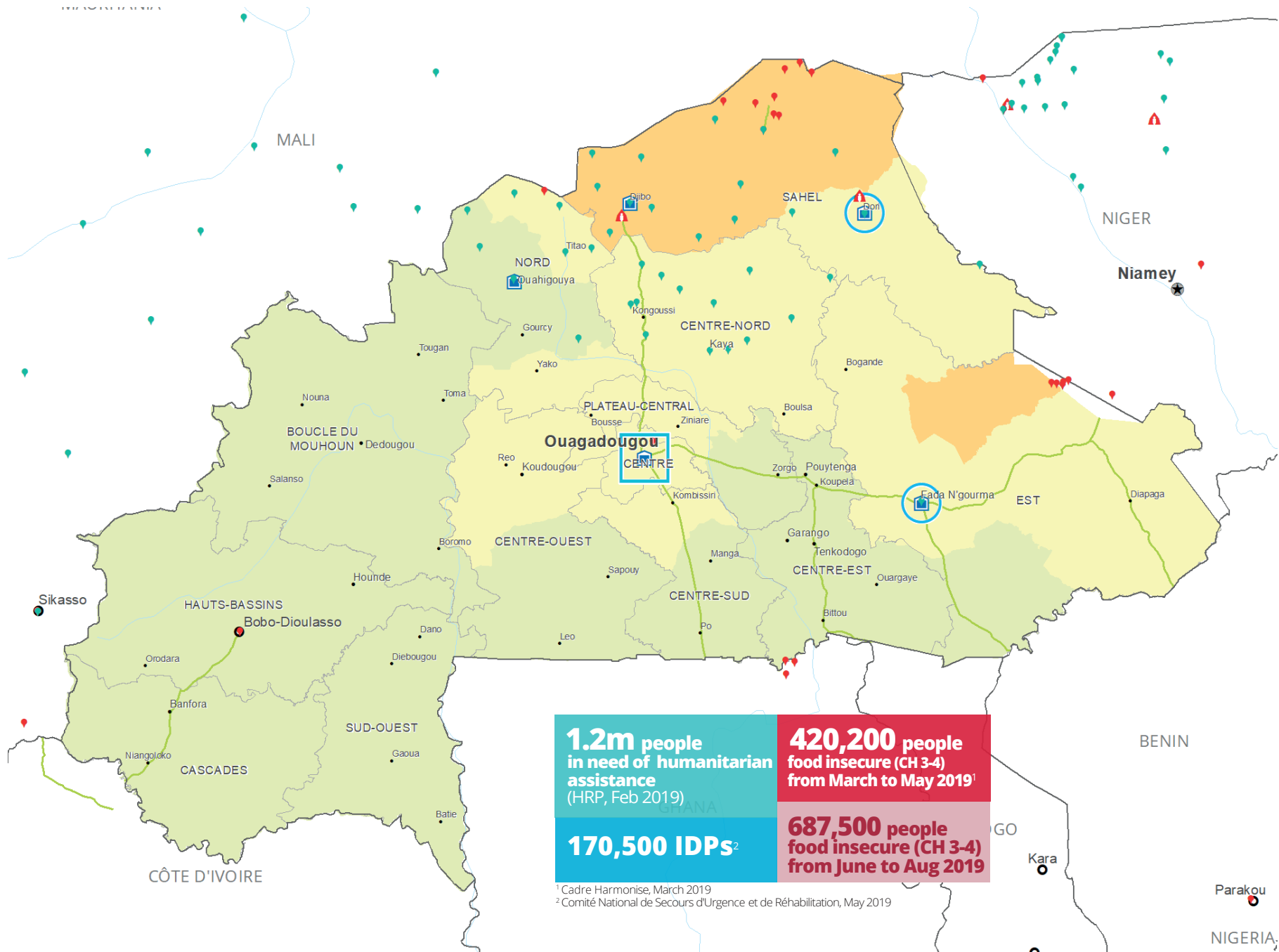
INTERNAL DISPLACEMENT REGISTRATION

AS OF MAY 2019

Number of IDPs by Region - May 2019
(Source: Comité National de Secours d'Urgence et de Réhabilitation)

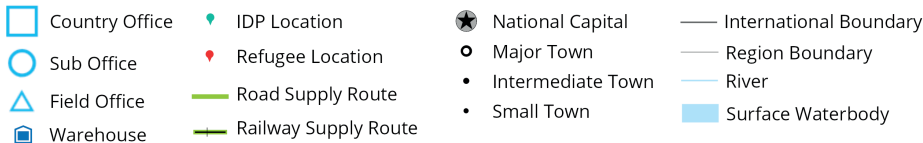


SOURCE: IOM, MAY 2019



¹ Cadre Harmonisé, March 2019

² Comité National de Secours d'Urgence et de Réhabilitation, May 2019



CH Food Security Classification
June - August 2019 Projection

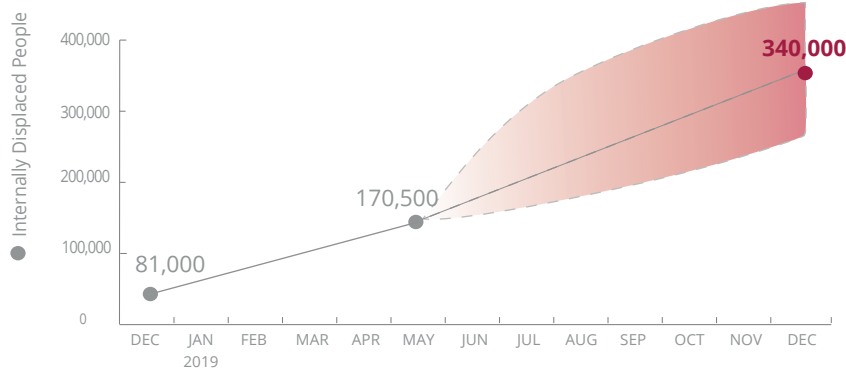
- Minimal (Phase 1)
- Stressed (Phase 2)
- Crisis (Phase 3)

Sources: WFP, OCHA, UNHCR,

The designations employed and the presentation of material in the map(s) do not imply the expression of any opinion on the part of WFP concerning the legal or constitutional status of any country, territory, city or sea, or concerning the delimitation of its frontiers or boundaries. © World Food Programme 2019.



INTERNAL DISPLACEMENT PROJECTION



SOURCE: OCHA, JUNE 2019



UN Humanitarian Air Service (UNHAS) PROJECTED NEW OPERATIONS

- Djibo (Sahel)
- Gorom-Gorom (Sahel)
- Fada N'Gourma (East)
- Dori (Sahel)
- Ouahigouya (North)

WFP LEVEL 2 EMERGENCY

SINCE 03 May 2019

For more information, see the latest SITUATION REPORT and COUNTRY BRIEFS
www.wfp.org/countries/burkina-faso



Country Strategic Plan (2019-2023)

<http://documents.wfp.org/stellent/groups/public/documents/ep/WFP284303.pdf>

Produced by the WFP Operations Centre (OPSCEN) jointly with Country Office and Regional Bureau Dakar. This dashboard is based on best available information at the time of production. Future updates may vary as new information becomes available.