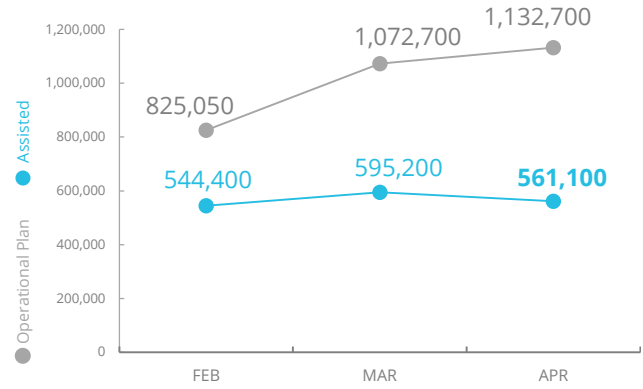


Central African Republic



PEOPLE ASSISTED BY WFP

Food Assistance

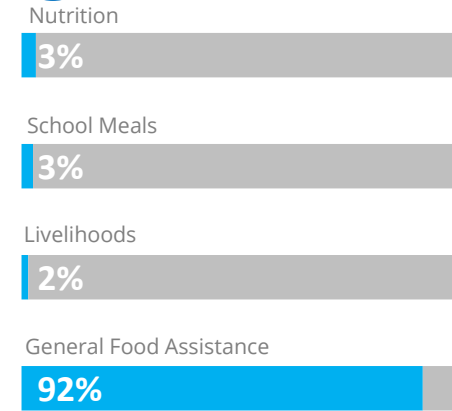


SOURCE: WFP, 10 JUNE 2020



OPERATIONAL PROFILE

People reached (April)



COVID-19 Operational Impact

Assisted	Status	WFP Response
18,600	⚠️	Malnutrition Activities only
15,000	⚠️	Some schools distributed food for Home-grown school feeding
8,700	⚠️	Beneficiaries received food for activities completed before the suspension of FFA
519,000	✅	GFA: Implemented



Funding

Central African Republic Country Strategic Plan (CSP)

June - November 2020

US\$ 93m
Net funding requirements

2020 COUNTRY STRATEGIC PLAN (CSP)
Requirements: USD 228m
Contributions: USD 93.7m

41%

SOURCE: WFP, 22 MAY 2020

AVERAGE MONTHLY FUNDING REQUIREMENTS (US\$)

🍽️ 13 m

🏠 4.7m

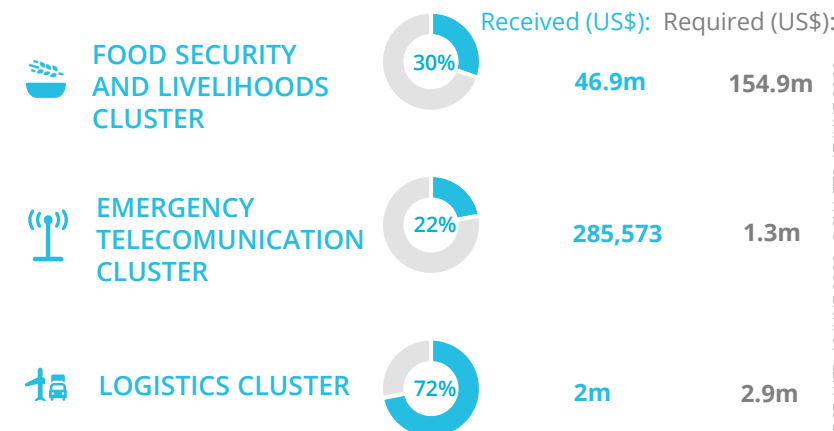
EXPECTED SHORTFALLS



■ SF < 5% | ■ 5% < SF < 20% | ■ 20% < SF < 50% | ■ 50% < SF < 80% | ■ SF > 80%

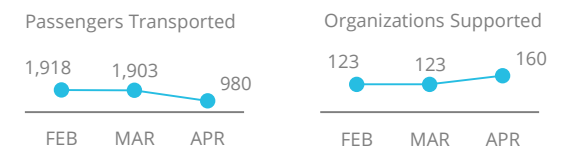
SOURCE: WFP, 17 JUNE 2020

WFP-LED AND SUPPORTED CLUSTERS

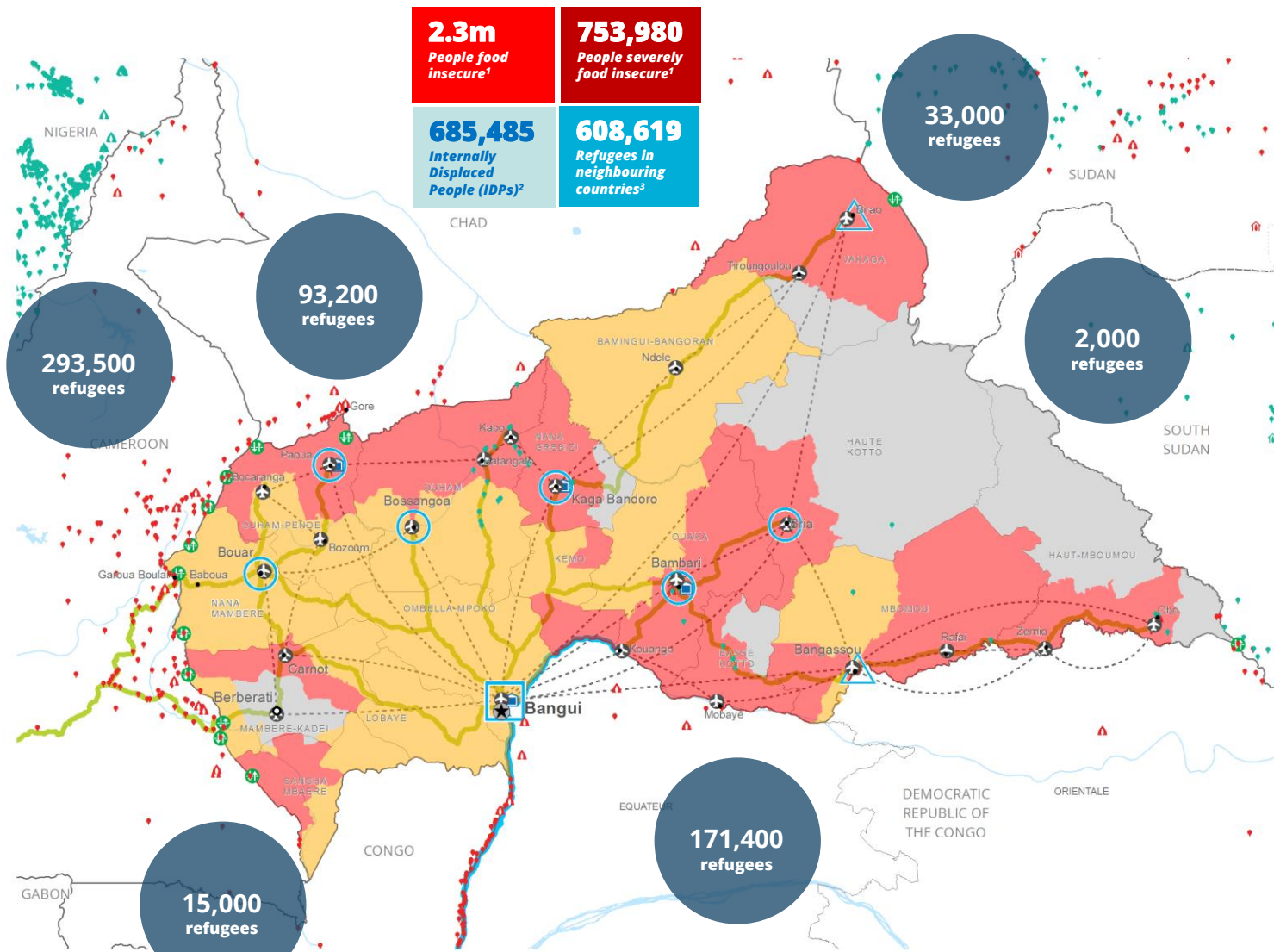


SOURCE: WFP, 10 JUNE 2020; OCHA FTS, 17 JUNE 2020

UN HUMANITARIAN AIR SERVICES (UNHAS)



SOURCE: WFP, 10 JUNE 2020



¹ IPC, MAY 2020
² CMP, MAY 2020
³ UNHCR, MAY 2020

Acute Food Insecurity Phase May - August 2020

- No data
- Crisis
- Minimal
- Stressed
- Emergency
- Famine

Country Office

- Country Office
- Sub Office
- Field Office
- Warehouse

Supply Routes

- Road Supply Route
- Waterway Supply Route
- UNHAS Connection
- UNHAS Route

Border Crossing Point

- Border Crossing Point
- IDP Camp
- IDP Center
- IDP Location

Refugee Camp

- Refugee Camp
- Refugee Center
- Refugee Location

National Capital

- National Capital
- Major Town
- Intermediate Town
- Small town

International Boundary

- International Boundary
- Province boundary
- River

WFP LEVEL 2 EMERGENCY SINCE 30 MARCH 2018

SITUATION REPORT and COUNTRY BRIEFS

