

SOUTH SUDAN RESPONSE UPDATE

- An estimated 4.8 million people throughout South Sudan are facing grave food insecurity and require urgent humanitarian assistance. According to the Integrated Food Security Phase Classification (IPC) update (April 2016), this is a significant increase from the first quarter of 2016 and the same period last year. The highest proportions of populations in Crisis, Emergency and Catastrophe were recorded in Northern and Western Bahr el Ghazal, and Unity States. The Greater Upper Nile also remains structurally fragile and vulnerable as a result of the protracted conflict.
- The conflict exacerbated by inflation and high commodity prices has resulted in reduced access to food, to which the FSL-C has initiated the Urban Programming Working Group, to focus partners on the need implement responsible market based programmes.

- Priorities for the FSL-C are to improve access to food-including direct distribution of in-kind assistance and cash programming; and to invest in livelihoods activities to extent possible with the distribution of crop, vegetable, and fishing kits.
- The FSL-C partners are only 46% funded as of mid-2016 within the Humanitarian Response Plan and some US\$230 million are required for partners to meet urgent unmet requirements. It is essential that funding and support on access issues are addressed in the near future to avoid a further deterioration of the food security situation and prolonged human suffering.

KEY FACTS & FIGURES

FSC Strategic Objectives

SO1: Ensure continued and regular access to food for the most vulnerable population

44%

Target Reached (Calculated on a monthly basis)

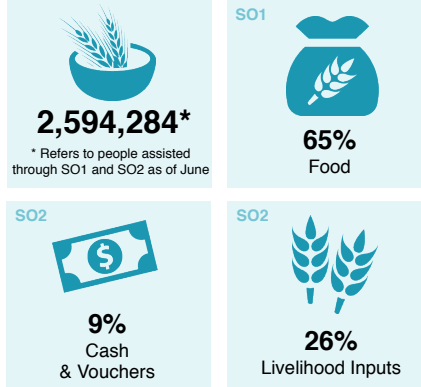
SO2: Protect livelihoods and promote livelihoods based coping capacities of the most vulnerable population at risk of hunger and malnutrition

33%

Target Reached (Calculated on a yearly basis)

Note: FSL partners have distributed all the planned inputs of the 2016 Livelihoods Response as of June 2016. Due to delays of reporting actuals reached from partners in the field, the Objective does not appear as fully reached.

RESPONSES BY MODALITY



PEOPLE TARGETED

4.23 MILLION

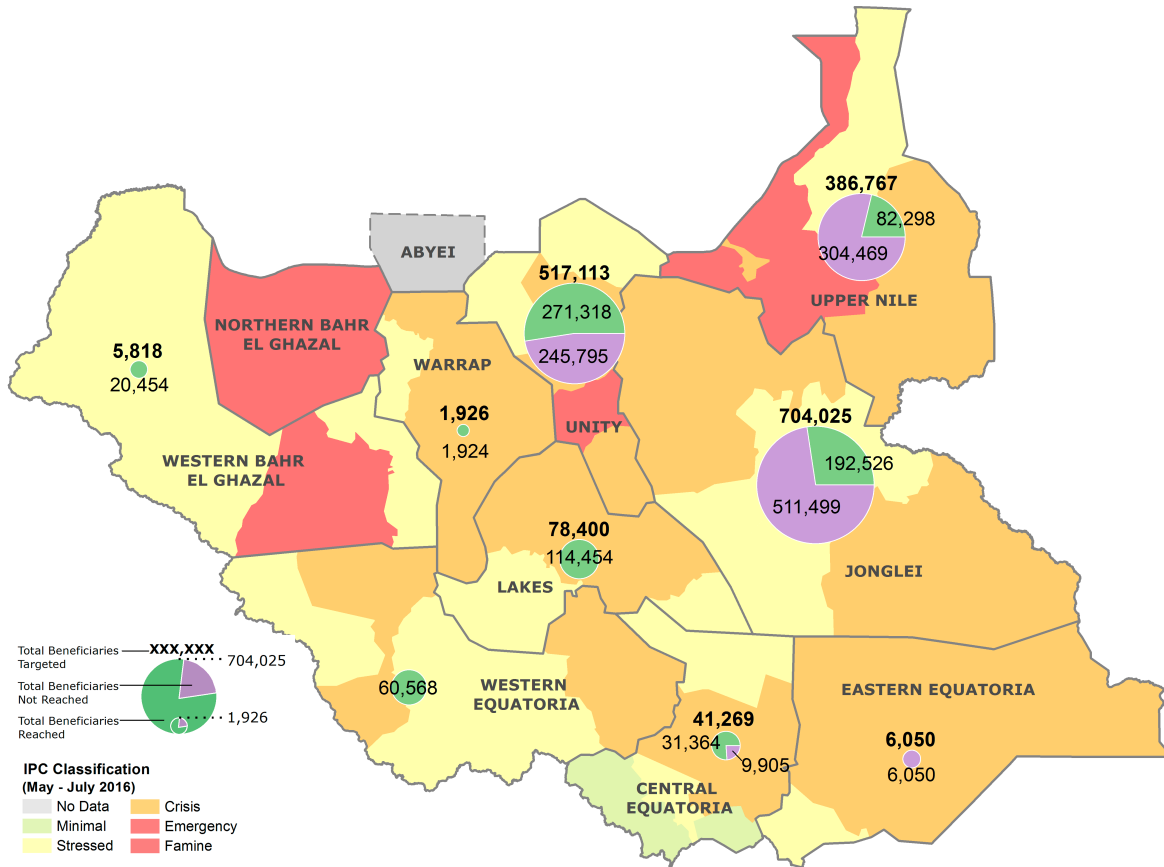
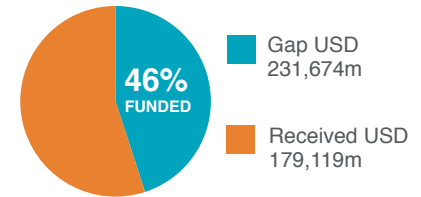
51% men **49%** women

PARTNERS

34 Humanitarian Response Plan Partners participating in FSC

FUNDING REQUIREMENTS

\$424.8 MILLION



EMERGENCY LIVELIHOOD SUPPORT – JUNE 2016

