

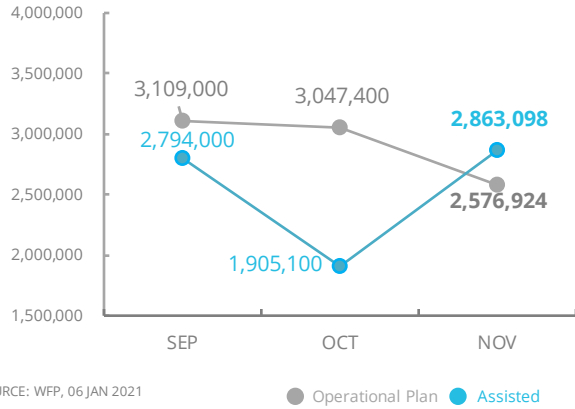


World Food Programme

Emergency Dashboard | December 2020

Central Sahel

PEOPLE ASSISTED Across Burkina Faso, Mali and Niger



SOURCE: WFP, 06 JAN 2021



COVID-19 OPERATIONAL IMPACT ✔ Ongoing ➔ Alternate Modality ⚠ Partially Suspended ✖ Suspended

BURKINA FASO

- ✔ General Food Assistance (GFA) and Nutrition in emergencies: Mitigation measures in place (Beneficiaries reached: 636,102 77%)
- ✔ Regular Nutrition Programming: Mitigation measures in place (Beneficiaries reached: 27,010 119%)
- ✔ Food for Assets (FFA) (Beneficiaries reached: N/A)
- ✔ School feeding activities (Beneficiaries reached: N/A)

MALI

- ✔ General Food Assistance (GFA): Mitigation measures in place (Beneficiaries reached: 463,800 100%)
- ✔ Nutrition: Mitigation measures in place (Beneficiaries reached: 21,000 100%)
- ✔ Food for Assets: Replacing community-based activities with individual household activities (Beneficiaries reached: 57,300 100%)
- ➔ School feeding activities (Beneficiaries reached: 86,200 59%)

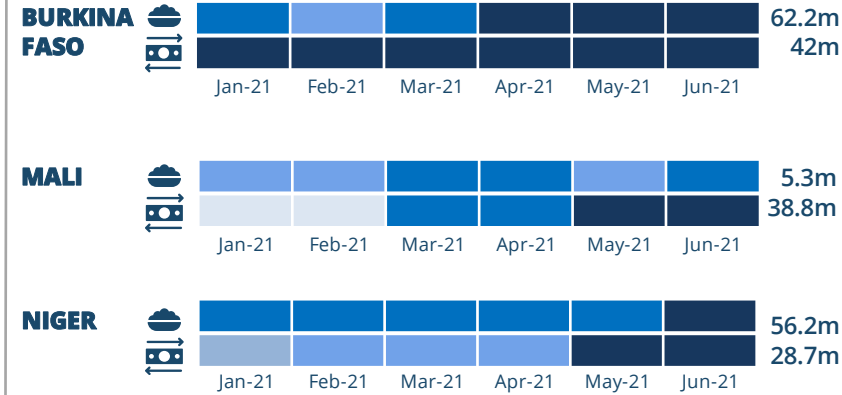
NIGER

- ✔ GFA: Mitigation measures in place (Beneficiaries reached: 647,600 95%)
- ✔ Nutrition: Mitigation measures in place (Beneficiaries reached: 106,300 104%)
- ✔ Food for Assets (FFA) (Beneficiaries reached: N/A)
- ➔ School feeding activities (Beneficiaries reached: N/A)

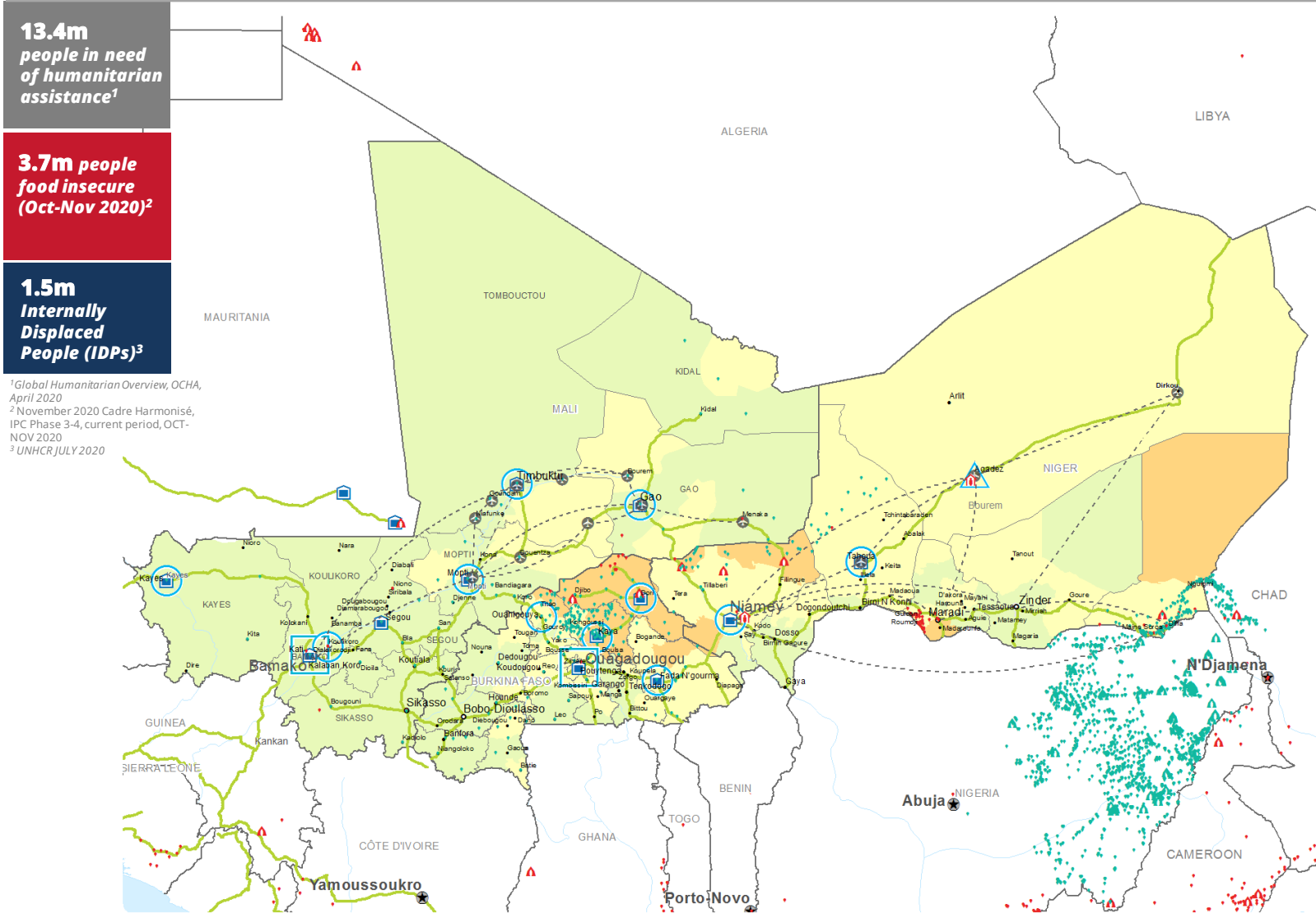
EXPECTED PIPELINE BREAKS (US\$)

SOURCE: WFP, 08 JAN 2021

6 month shortfalls



Monthly shortfall: SF < 5% | 5% < SF < 20% | 20% < SF < 50% | 50% < SF < 80% | SF > 80%



13.4m people in need of humanitarian assistance¹

3.7m people food insecure (Oct-Nov 2020)²

1.5m Internally Displaced People (IDPs)³

¹ Global Humanitarian Overview, OCHA, April 2020
² November 2020 Cadre Harmonisé, IPC Phase 3-4, current period, OCT-NOV 2020
³ UNHCR JULY 2020



FUNDING Burkina Faso, Mali and Niger Country Strategic Plans

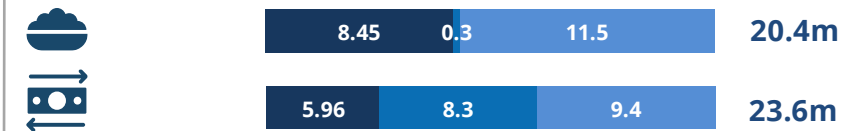
January - June 2021

Net funding requirements (needs based) (US\$)

BURKINA FASO	103.7m	} 226.2m
MALI	58.5m	
NIGER	64m	

SOURCE: WFP, 08 JAN 2021

AVERAGE MONTHLY REQUIREMENTS (US\$) - January



KEY FIGURES

Category	BURKINA FASO	MALI	NIGER	Source
Total Population (in millions)	20.9m	20.5m	21.8m	UNFPA, JUN, 2020
Internally Displaced People	1,074,993	287,500	265,500	CONASUR, DEC 2020
Refugees (does not include returnees)	20,032	42,800	228,700	UNHCR, JUL, OCT 2020
Food Insecure People (CH Phases 3-5)	2,020,039	436,867	1,228,778	November 2020 Cadre Harmonisé, IPC Phase 3-4, current period, OCT-NOV 2020
People Prioritized by WFP	1,200,000	1,000,000	2,600,000	Planification figures (WFP COUNTRY STRATEGIC PLANS)

CH Food Security Classification October - December 2020

- No data
- Minimal (Phase 1)
- Stressed (Phase 2)
- Crisis (Phase 3)
- Emergency (Phase 4)
- Famine (Phase 5)

- Country Office
- Sub Office
- Field Office
- IDP Camp
- IDP Center
- IDP Location
- Refugee Camp
- Refugee Center
- Refugee Location
- Warehouse
- UNHAS Connection
- UNHAS Route
- Road Supply Route
- National Capital
- Major Town
- Intermediate Town
- Small town
- International Boundary
- Region Boundary
- River

Produced by the WFP Operations Centre (OPSCEN) jointly with Country Office and Regional Bureau Dakar. This dashboard is based on best available information at the time of production. Future updates may vary as new information becomes available.

WFP LEVEL 3 EMERGENCY SINCE 09 SEPTEMBER 2019

SITUATION REPORT and COUNTRY BRIEF



SAVING LIVES
CHANGING LIVES