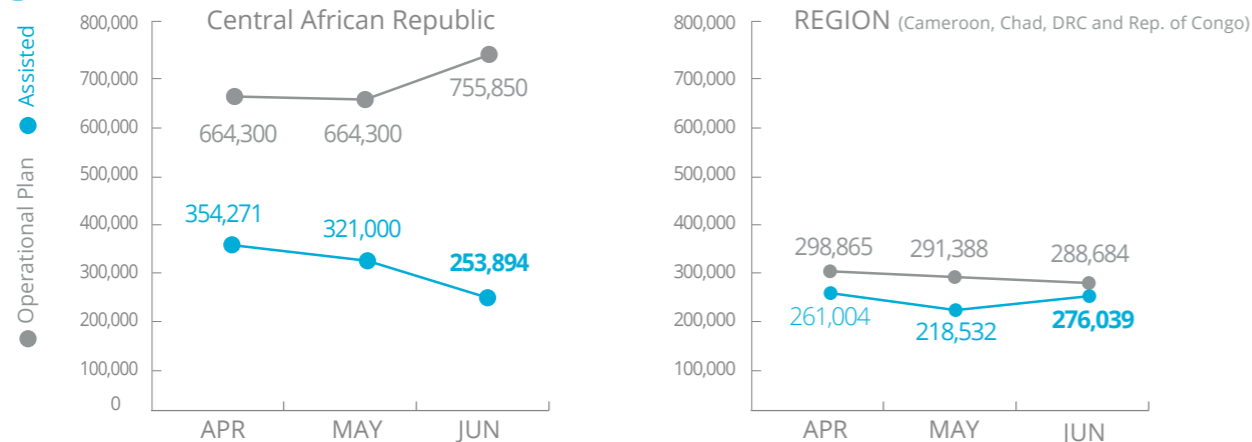


Central African Republic

PEOPLE ASSISTED Regional Emergency Operation 200799



SOURCE: WFP, 27 JULY 2018

FUNDING

C.A.R. Interim Country Strategic Plan (2018-2020)

August – December 2018

US\$54.6m
Net funding requirement



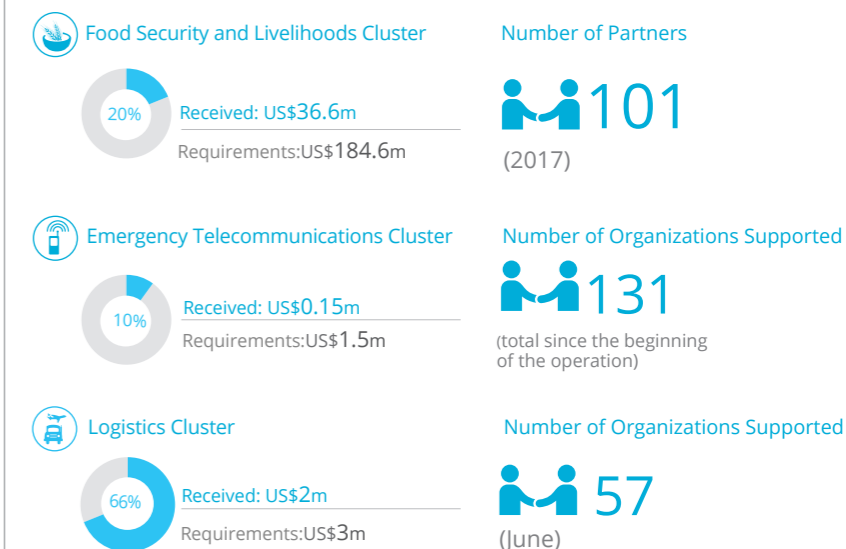
SOURCE: WFP, 30 JULY 2018

HUMANITARIAN ACCESS RESTRICTIONS

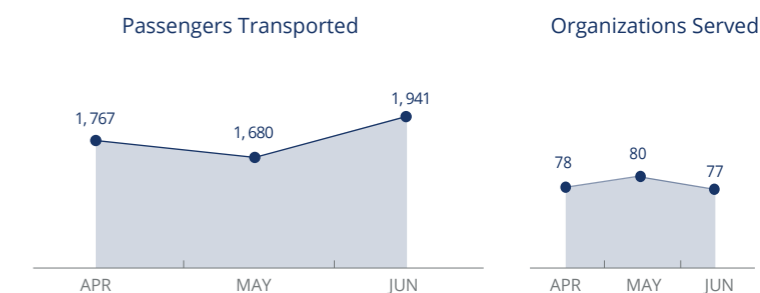


Source: HNO 2018

WFP LED & SUPPORTED CLUSTERS



UN Humanitarian Air Service (UNHAS)



Sources: OCHA FTS, 10 July 2018; Clusters, 30 July 2018

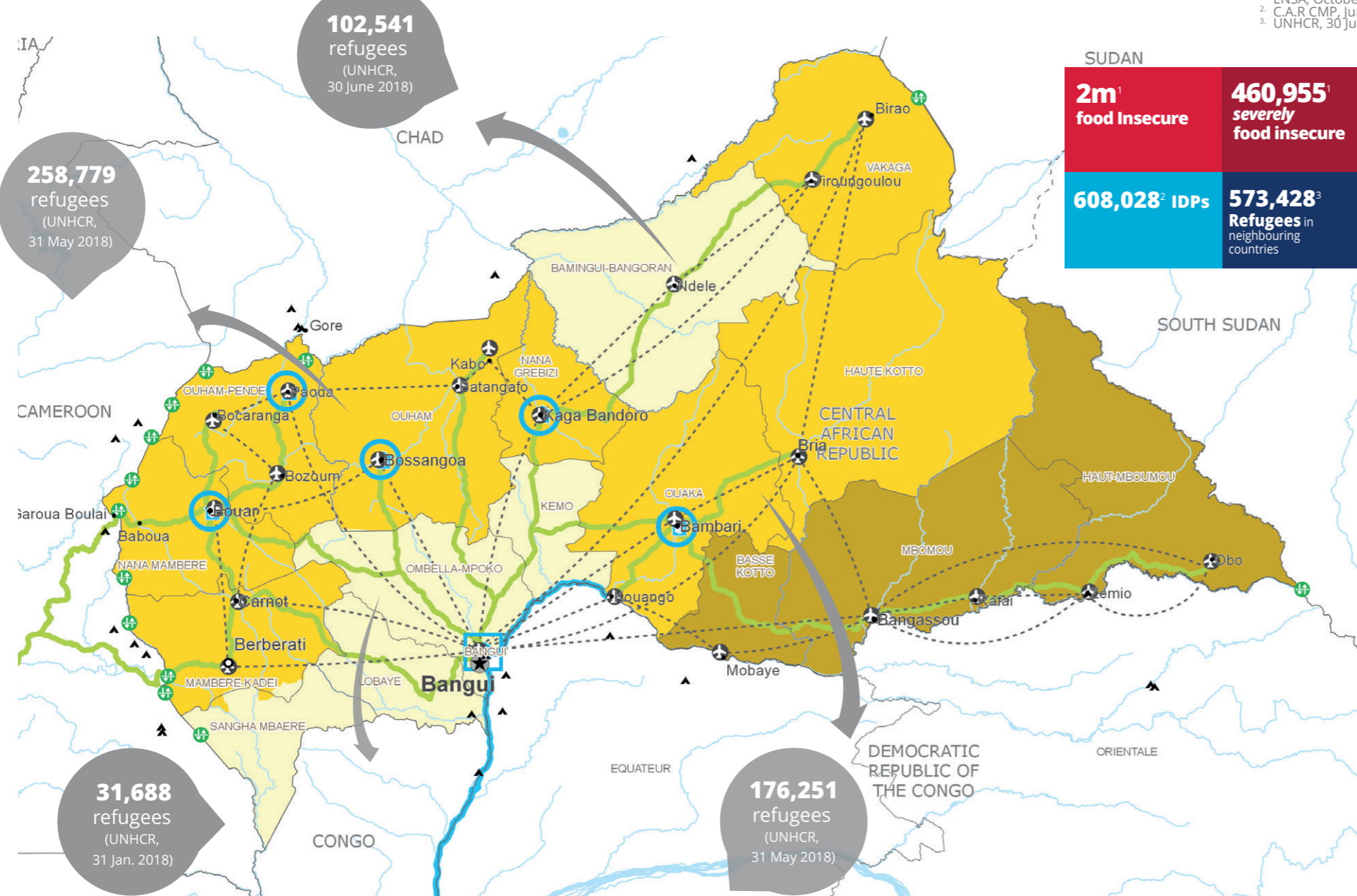
WFP LEVEL 2 EMERGENCY

SINCE 02 JUNE 2015

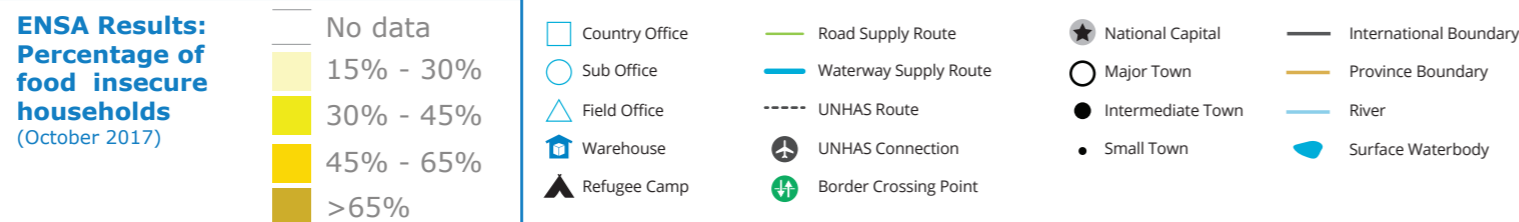
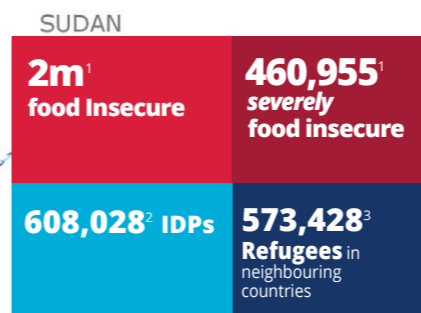
For more information, see the SITUATION REPORT and COUNTRY BRIEF
www.wfp.org/countries/central-african-republic

2A C.A.R Interim Country Strategic Plan (2018-2020)
<http://documents.wfp.org/stellent/groups/public/documents/ep/WFP284303.pdf>

Produced by the WFP Operations Centre (OPSCEN) jointly with Country Office and Regional Bureau Dakar. This dashboard is based on best available information at the time of production. Future updates may vary as new information becomes available.



1. ENSA, October 2017
2. C.A.R CMP, June 2018
3. UNHCR, 30 June 2018



Sources: WFP, UNGIWG, GAUL, GLCSC, OCHA, UNHCR.

The designations employed and the presentation of material in the map(s) do not imply the expression of any opinion on the part of WFP concerning the legal or constitutional status of any country, territory, city or sea, or concerning the delimitation of its frontiers or boundaries.
© World Food Programme 2018.