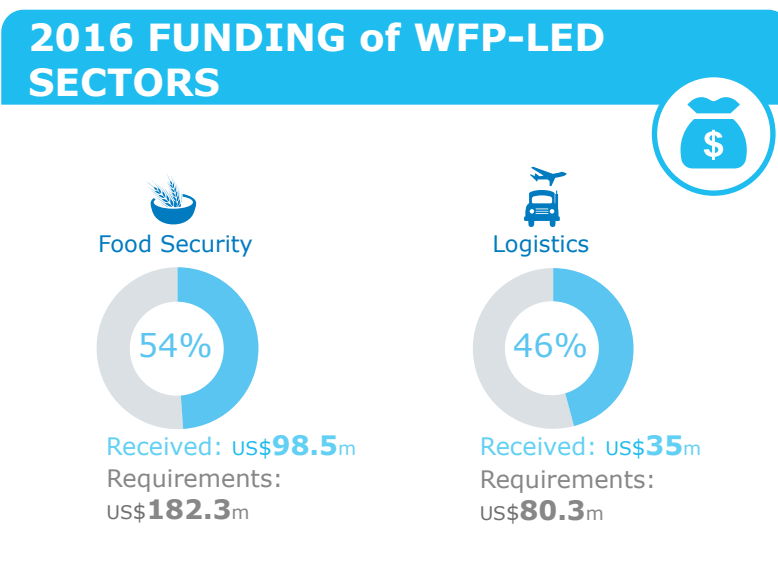
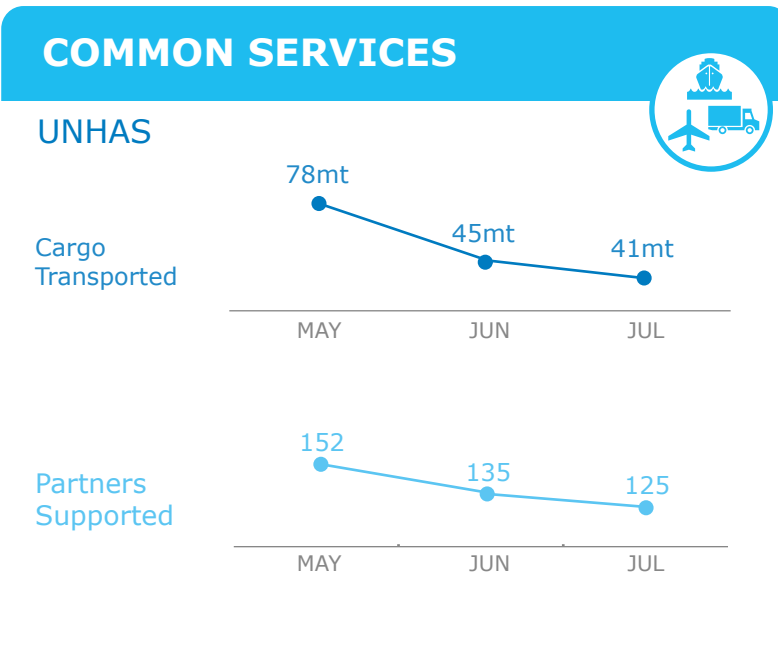
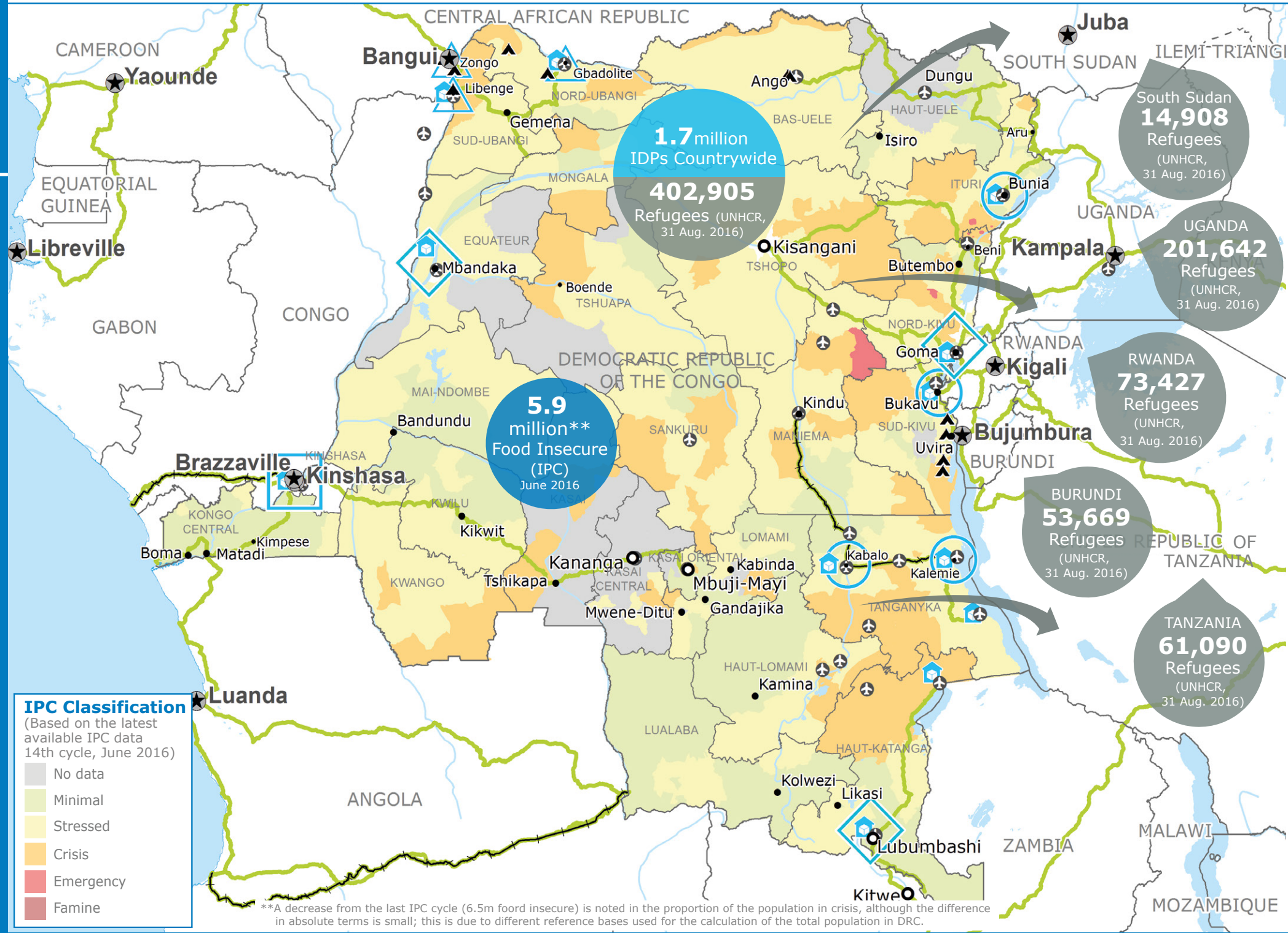


OPERATIONAL CHALLENGES

- Insecurity
- Humanitarian Access

RESOURCES



WFP LEVEL 2 EMERGENCY
SINCE 12 DECEMBER 2013

2A PRRO 200832
<http://documents.wfp.org/stellent/groups/public/documents/ep/WFP284303.pdf>

Check the **COUNTRY BRIEF**
<http://www.wfp.org/countries/congo-democratic-republic>

Produced by the WFP **Operations Centre (OPSCEN)** jointly with Country Office and Regional Bureau Johannesburg
This dashboard is based on best available information at the time of production. Future updates may vary as new information becomes available.

- Country Office
- Field Office
- UNHAS Connection
- National Capital
- International Boundary
- Area Office
- Warehouse
- Province boundary
- Major Town
- Road Supply Route
- Intermediate Town
- River
- Small town
- Sub Office
- Refugee Camp
- Surface Waterbody

Sources: WFP, UNGIWG, GAUL, GLSCS, OCHA, UNHCR, IPC
The designations employed and the presentation of material in the map(s) do not imply the expression of any opinion on the part of WFP concerning the legal or constitutional status of any country, territory, city or sea, or concerning the delimitation of its frontiers or boundaries.
© World Food Programme 2016

Source: WFP, 19 August 2016
Source: OCHA FTS, 19 September 2016