



World Food Programme

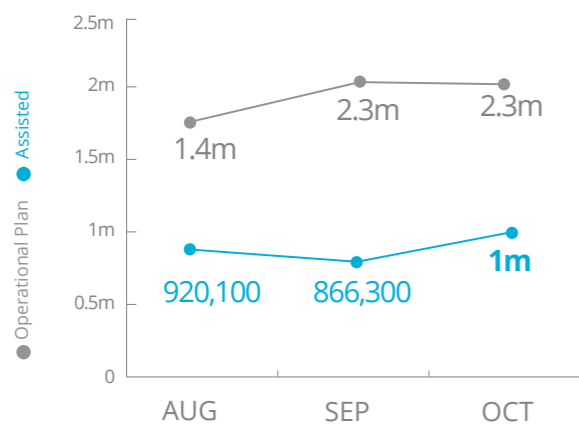
Emergency Dashboard | November 2018

SAVING LIVES
CHANGING LIVES

Democratic Republic of Congo

PEOPLE ASSISTED

DR Congo Interim Country Strategic Plan (ICSP)

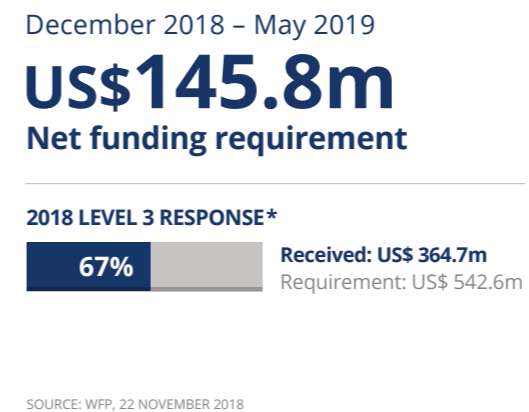


OPERATIONAL PROFILE



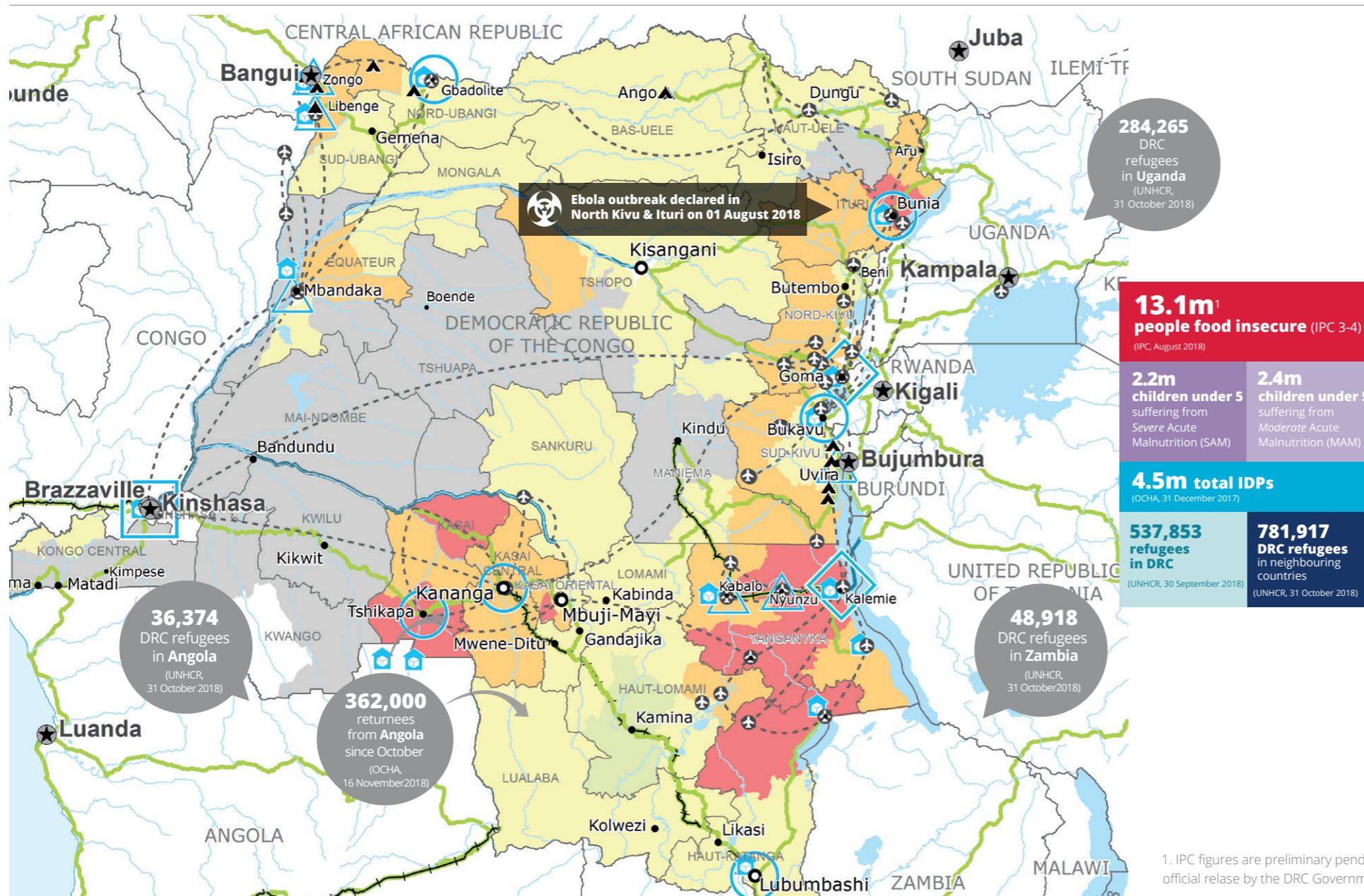
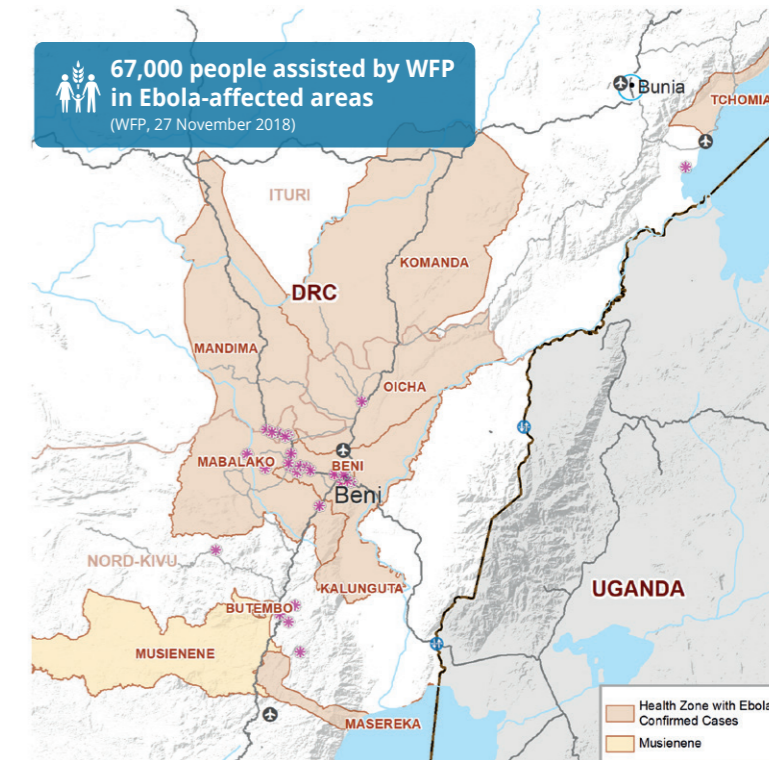
FUNDING

DR Congo Interim Country Strategic Plan (ICSP)

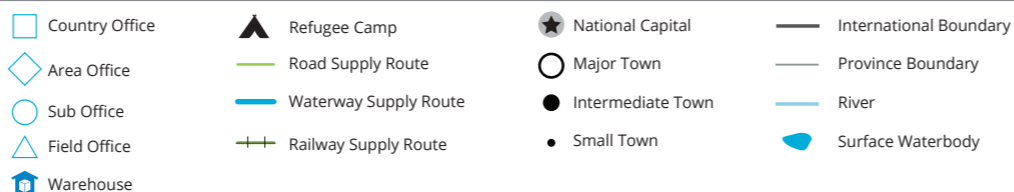
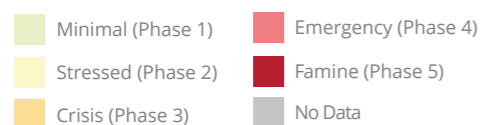


EBOLA AFFECTED HEALTH ZONES

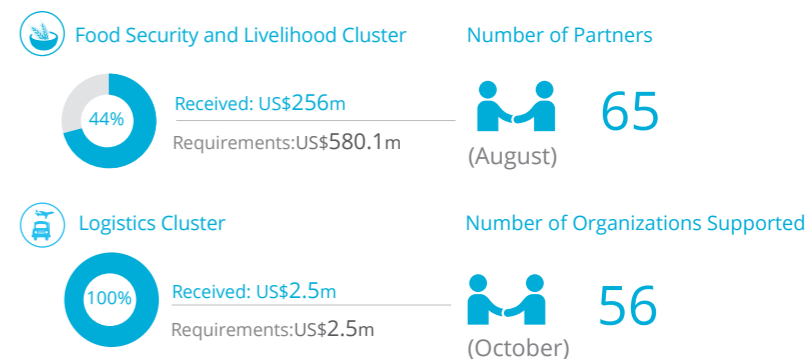
AS OF NOVEMBER 2018



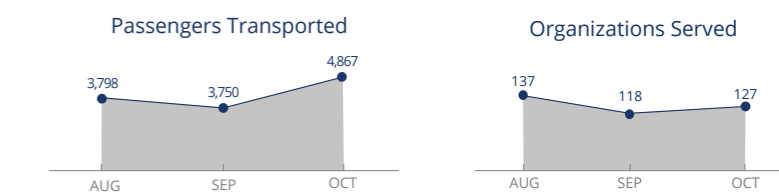
IPC Food Security Classification (August 2018)



WFP LED & SUPPORTED CLUSTERS



UN Humanitarian Air Service (UNHAS)



WFP LEVEL 3 EMERGENCY

SINCE 06 OCTOBER 2017 (LEVEL 2 EMERGENCY SINCE 12 DEC 2013)

For more information, see the SITUATION REPORT and COUNTRY BRIEF www.wfp.org/countries/congo-democratic-republic

2A Interim Country Strategic Plan (2018-2020)

Produced by the WFP Operations Centre (OPSCEN) jointly with Country Office and Regional Bureau Johannesburg. This dashboard is based on best available information at the time of production. Future updates may vary as new information becomes available.