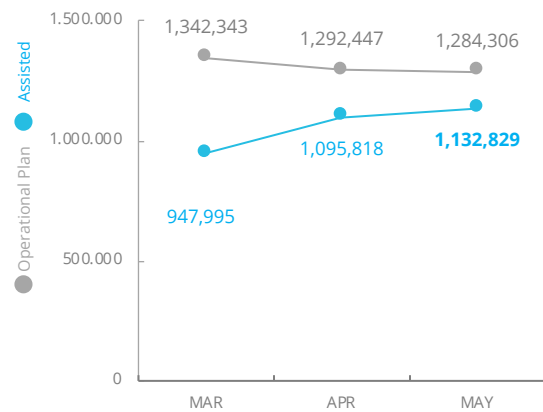


Democratic Republic of Congo

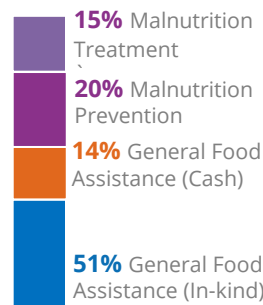
PEOPLE ASSISTED

DR Congo Interim Country Strategic Plan

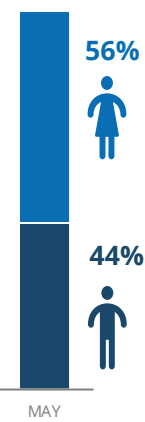


OPERATIONAL PROFILE

By Activity



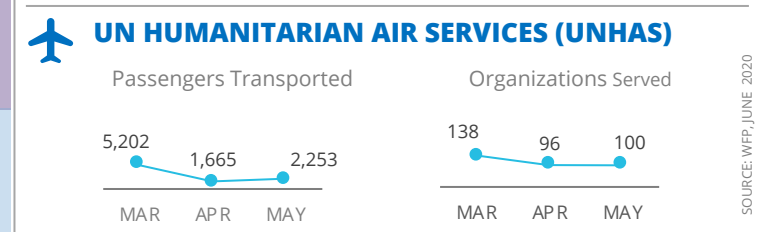
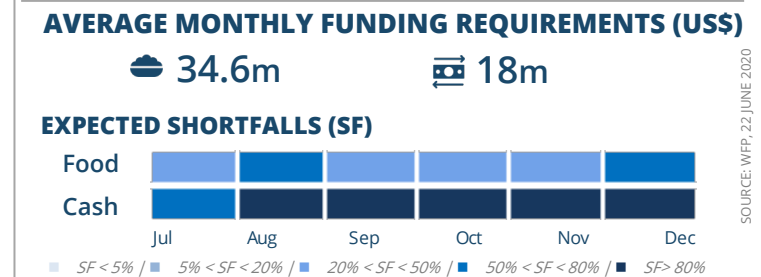
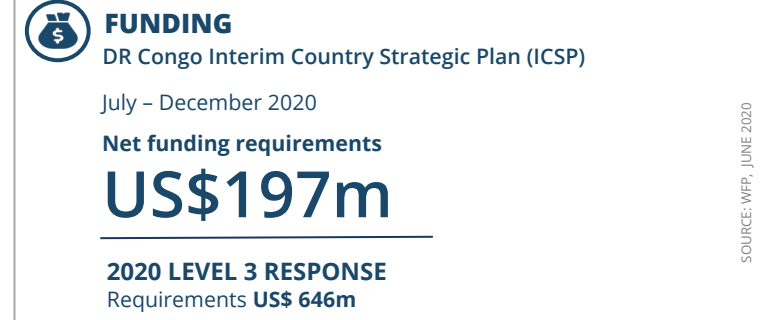
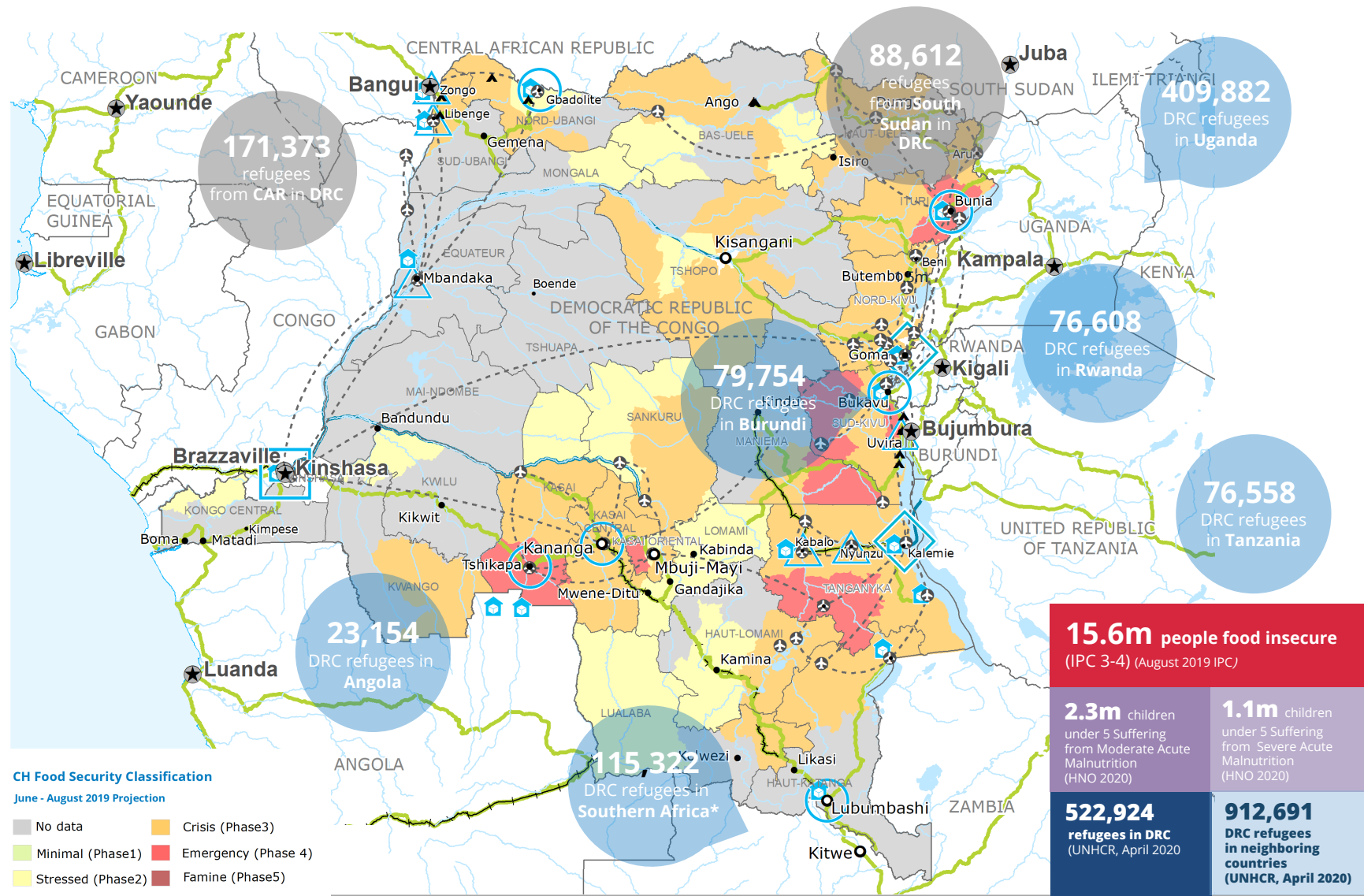
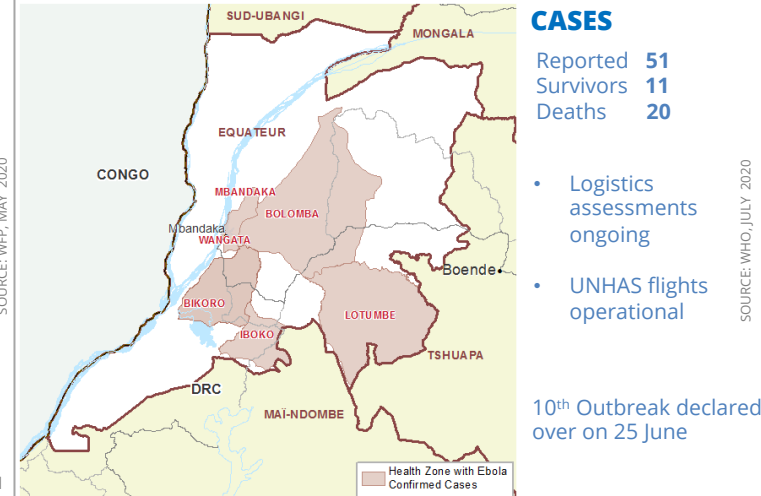
By Gender



COVID-19 OPERATIONAL IMPACT

- Status: WFP Response adjusted
- Extended distribution timelines
 - Crowd control and social distancing measures at distribution sites
 - Mandatory hygiene measures at distribution sites
 - School feeding through take home rations
- Legend: ✔ Ongoing ! Partially Suspended ✘ Suspended

EBOLA OUTBREAK IN EQUATEUR PROVINCE*



WFP LEVEL 3 EMERGENCY

SITUATION REPORT and COUNTRY BRIEF

Gender Age Marker 4