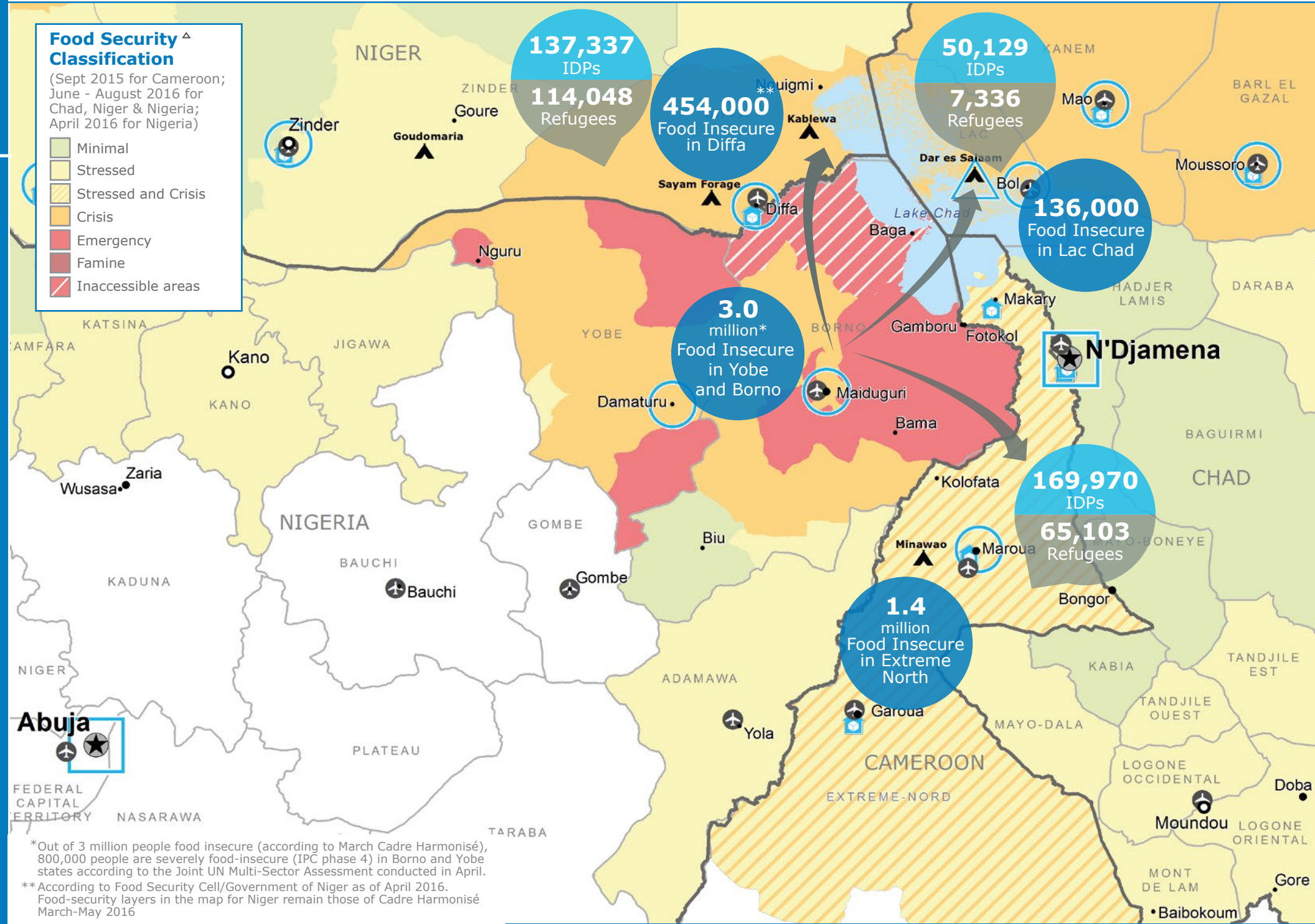


### FUNDING STATUS OF COMMON SERVICES

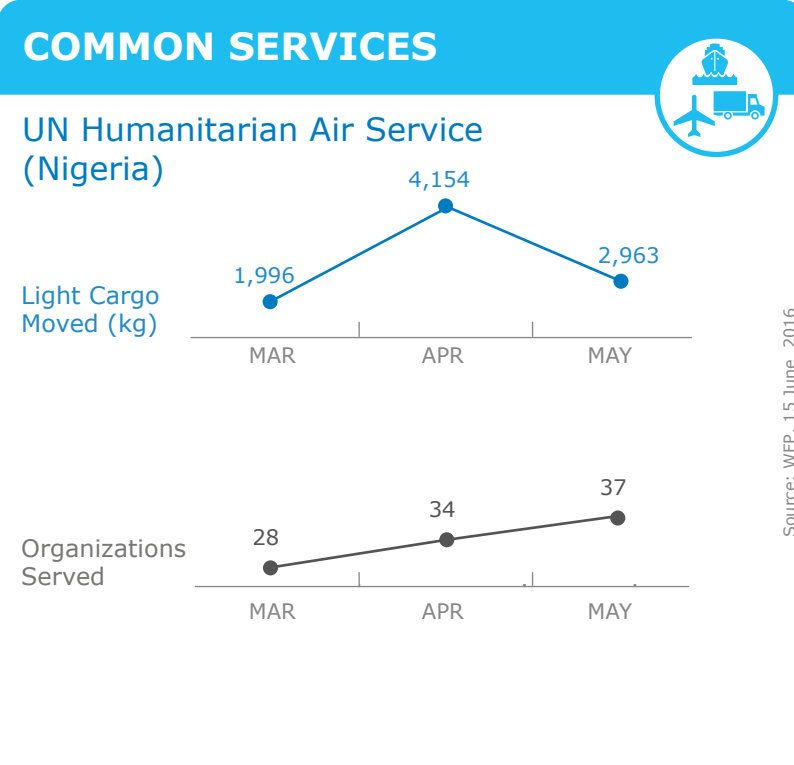
Special Operation	Received	Total Required	Percentage
Special Operation 200834 (UNHAS NIGERIA) May 2015 - June 2016	6.5m	7.7m	84%
Special Operation 200792* (UNHAS NIGER) Jan 2015 - Dec 2016	18.3m	16.3m	82%
Special Operation 200895*(UNHAS CAMEROON) Aug 2015 - Dec 2016	3m	7.1m	42%
Special Operation 200785*(UNHAS CHAD) Jan 2015 - Dec 2016	22.5m	38.7m	58%

\*Covers operations in the whole country, not only in areas affected by insecurity around Lake Chad.



### OPERATIONAL CHALLENGES

- Insecurity
- Humanitarian Access
- Resources



Check the **COUNTRY BRIEF** and **SITUATION REPORT**  
<http://www.wfp.org/countries/CAMEROON>  
<http://www.wfp.org/countries/CHAD>  
<http://www.wfp.org/countries/NIGER>

Produced by the WFP **Operations Centre (OPSCEN)** jointly with Country Office and Regional Bureau Dakar  
 This dashboard is based on best available information at the time of production. Future updates may vary as new information becomes available.



▲ Cadre Harmonisé March 2016 for Chad, Niger and Nigeria; EFSA Sept 2015 for Cameroon. Joint UN Multi-Sector Assessment April 2016 for Nigeria  
 Sources: WFP, UNGIWI, GAUL, GLCSC, UNHCR, IOM.  
 The designations employed and the presentation of material in the map(s) do not imply the expression of any opinion on the part of WFP concerning the legal or constitutional status of any country, territory, city or sea, or concerning the delimitation of its frontiers or boundaries. © World Food Programme 2016