

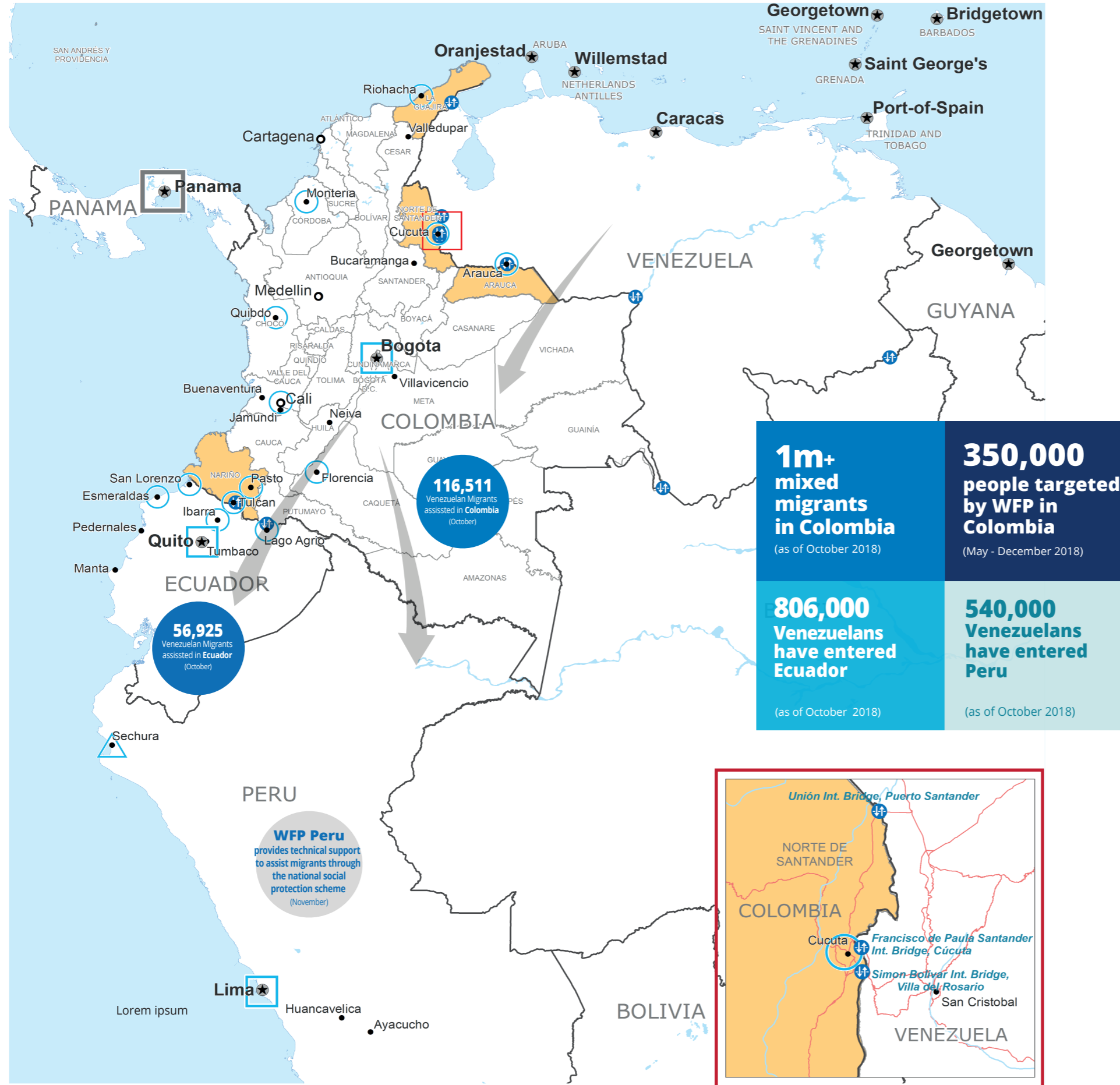


World Food Programme

Emergency Dashboard | November 2018

SAVING LIVES
CHANGING LIVES

Colombia - Venezuela Border Crisis



- Regional Bureau
- Country Office
- Sub Office
- Field Office
- WFP Operational Presence for L2 Response
- Intermediate Town
- Small Town
- Border Crossing Point
- International Boundary
- Department Boundary
- River
- Surface Waterbody

Sources: WFP, UNGIWG, GAUL, GLCSC, OCHA, UNHCR, Colombian Migration Authority

The designations employed and the presentation of material in the map(s) do not imply the expression of any opinion on the part of WFP concerning the legal or constitutional status of any country, territory, city or sea, or concerning the delimitation of its frontiers or boundaries.
© World Food Programme 2018.

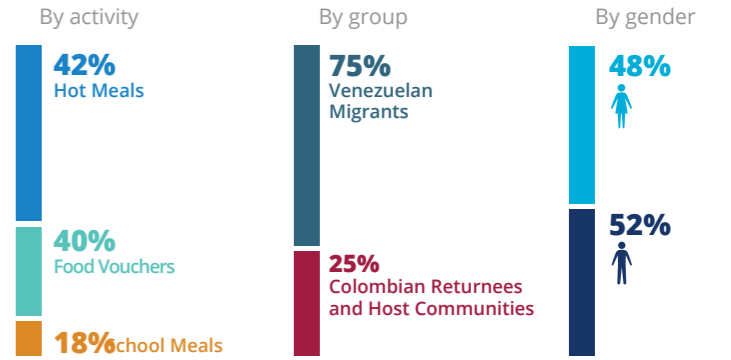


PEOPLE ASSISTED BY WFP COLOMBIA

WFP Colombia-Venezuela Border Crisis Response

116,511

people assisted (April - October 2018)



SOURCE: WFP, NOVEMBER 2018



FUNDING

WFP Colombia SO2: Colombia-Venezuela Border Crisis Response
November 2018 - April 2019



WFP Ecuador SO1: Colombia-Venezuela Border Crisis Response
November 2018 - April 2019



* INCLUDES INTERNAL LOAN OF USD 10 MILLION
SOURCE: WFP, 26 NOVEMBER 2018



COOPERATING PARTNERS

WFP Colombia-Venezuela Border Crisis Response

Number of Partners

18

(including local and international NGOs)

SOURCES: WFP, 31 OCTOBER 2018

WFP LEVEL 2 EMERGENCY

SINCE 30 March 2018

For more information, see the latest SITUATION REPORT and COUNTRY BRIEFS
www.wfp.org/countries/colombia



Colombia Country Strategic Plan (2017-2021)
<http://documents.wfp.org/stellent/groups/public/documents/ep/WFP284303.pdf>

Produced by the WFP Operations Centre (OPSCEN) jointly with Country Office and Regional Bureau Panama. This dashboard is based on best available information at the time of production. Future updates may vary as new information becomes available.