



World Food  
Programme

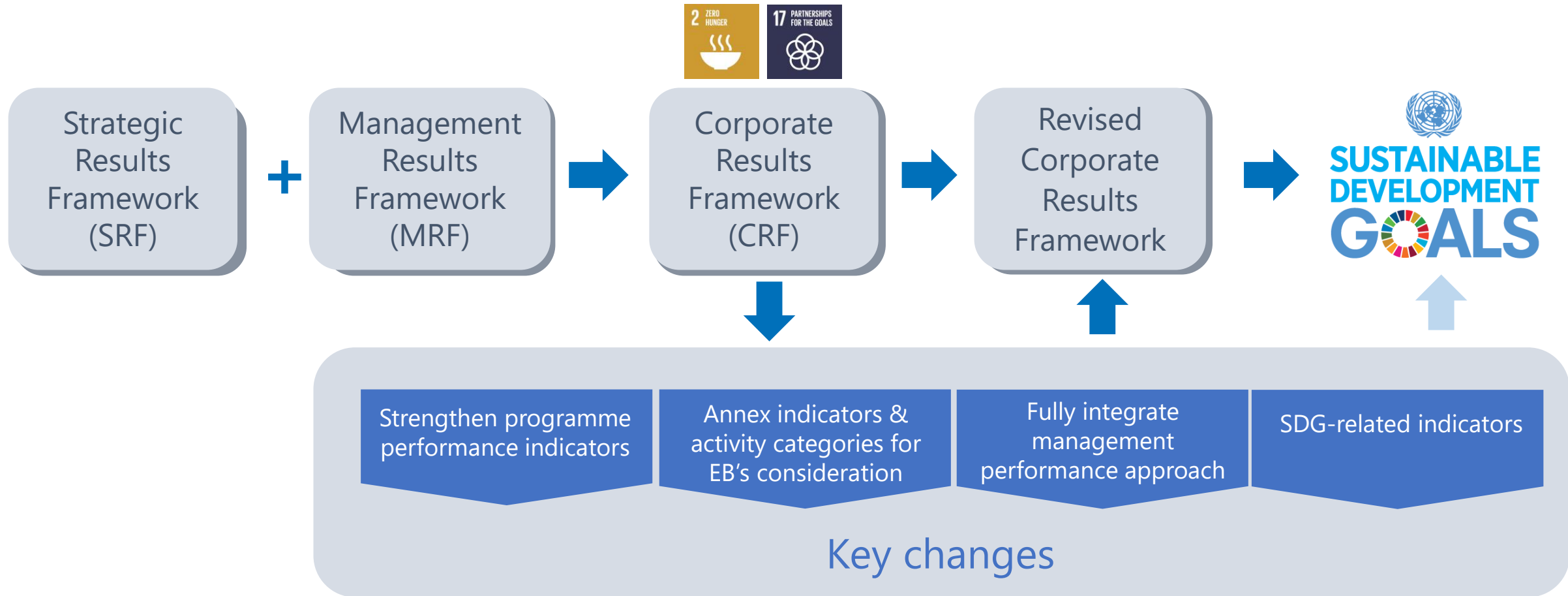
SAVING  
LIVES  
CHANGING  
LIVES



# Revised Corporate Results Framework (2017-2021)

Second Regular Session of the Executive Board  
26 November 2018

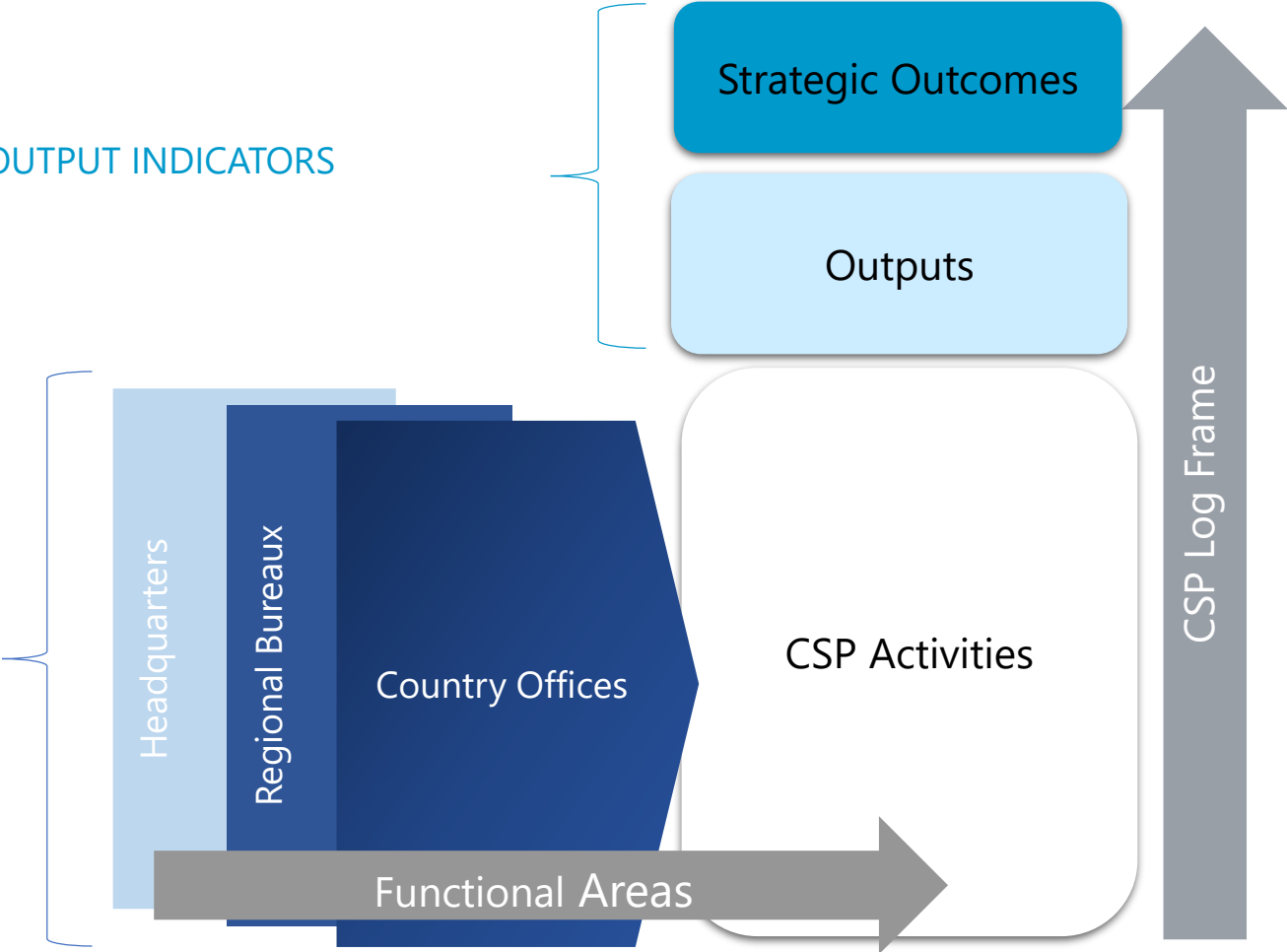
# Overview of key changes



# Performance Management Approach

PROGRAMME PERFORMANCE OUTCOME and OUTPUT INDICATORS  
(CSP LOG FRAME)

MANAGEMENT KEY PERFORMANCE  
INDICATORS (FUNCTIONAL AREAS)



# Enable WFP to measure contribution to Agenda 2030



01

Enhances country office communication on contributions to all SDGs (2, 17 and others)

02

Utilizes existing monitoring data and should not require additional data collection

03

Language is agency-neutral and aligns with national SDG indicators to the extent possible



# Strengthen programme performance indicators



01

Strengthens programme indicators in areas with gaps

02

Preserves the results chain and core indicators

03

Presents indicators in the annex by programme area and identifies mandatory indicator(s) for aggregation

# Fully integrate management performance approach



01

Integrate management performance approach in CRF main body

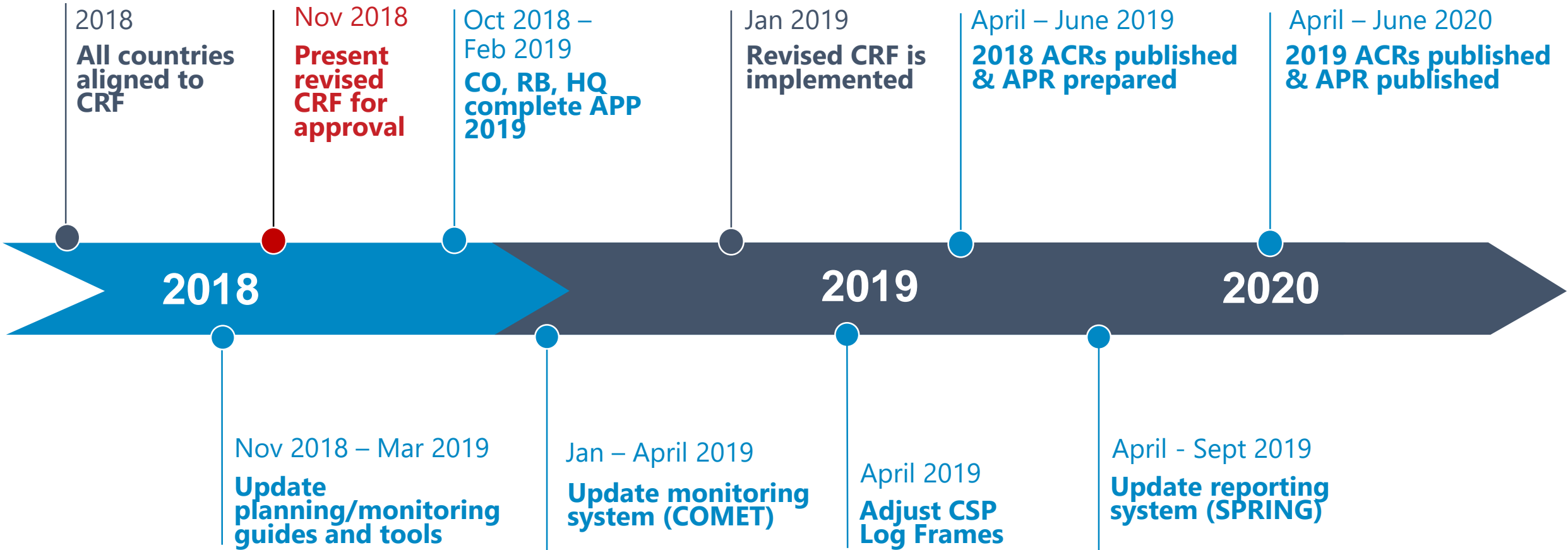
02

Include Category I Key Performance Indicators in CRF annexes

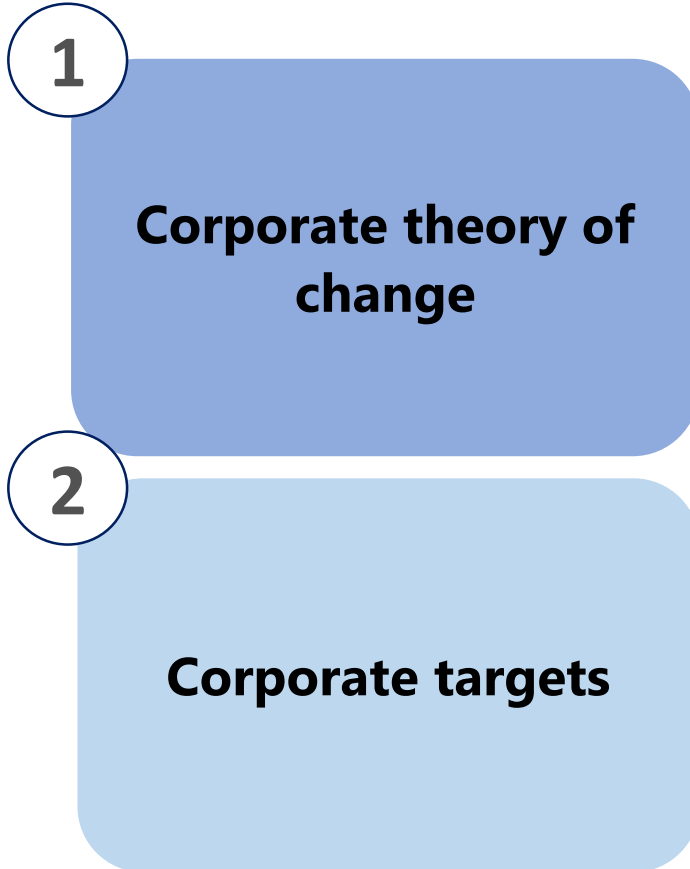
03

Select Category II Key Performance Indicators for 2019 (Management Plan)

# Implementation Timeline



# Continuing work



## Next steps

- Working Group with EB
- TOR/Concept Note being drafted
- Regular updates will be provided



# Behind the Scenes

## Corporate Monitoring Strategy



## Guidance and systems updates



## Food Security

### Food Consumption Score

Food Consumption Score (FCS)													
Acronym	FCS												
Technical unit	CSAP												
OF ref.	111/315/411												
Exact wording	Percentage of households with poor food consumption score												
	Percentage of households with acceptable food consumption score												
Unit	Percentage of households												
Definition	<p>The household Food Consumption Score (FCS) is associated with household's food access and is therefore used as a proxy for household food security. Food consumption indicators are designed to reflect the quantity and quality of people's diets.<sup>1</sup></p> <p>The FCS is used to classify households into three groups: poor, borderline or acceptable food consumption. These food consumption groups aggregate households with similar dietary patterns - in terms of frequency of consumption and diversity - and access to food.</p> <p><b>Poor food consumption:</b> Households that are not consuming staples and vegetables every day and never or very seldom consume protein-rich food such as meat and dairy.</p> <p><b>Borderline food consumption:</b> Households that are consuming staples and vegetables every day, accompanied by oil and pulses a few times a week.</p> <p><b>Acceptable food consumption:</b> Households that are consuming staples and vegetables every day, frequently accompanied by oil and pulses, and occasionally meat, fish and dairy.</p>												
Rationale	<table><tr><th></th><th>Thresholds</th><th>Adjusted thresholds<sup>2</sup></th></tr><tr><td>Poor food consumption</td><td>0-21</td><td>0-28</td></tr><tr><td>Borderline food consumption</td><td>21-35</td><td>28.5-42</td></tr><tr><td>Acceptable food consumption</td><td>&gt;35</td><td>&gt;42</td></tr></table>		Thresholds	Adjusted thresholds <sup>2</sup>	Poor food consumption	0-21	0-28	Borderline food consumption	21-35	28.5-42	Acceptable food consumption	>35	>42
	Thresholds	Adjusted thresholds <sup>2</sup>											
Poor food consumption	0-21	0-28											
Borderline food consumption	21-35	28.5-42											
Acceptable food consumption	>35	>42											

<sup>1</sup> Comprehensive Food Security and Vulnerability Analysis (CFSVA) Guidance, pg. 214

<sup>2</sup> Consult with your CD VAM Officer and/or RMEA on applicable thresholds in your country or region.

7





Thank you

