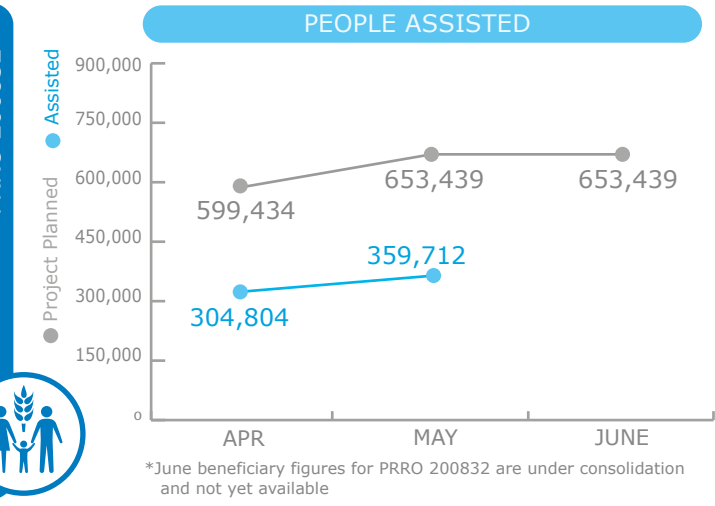
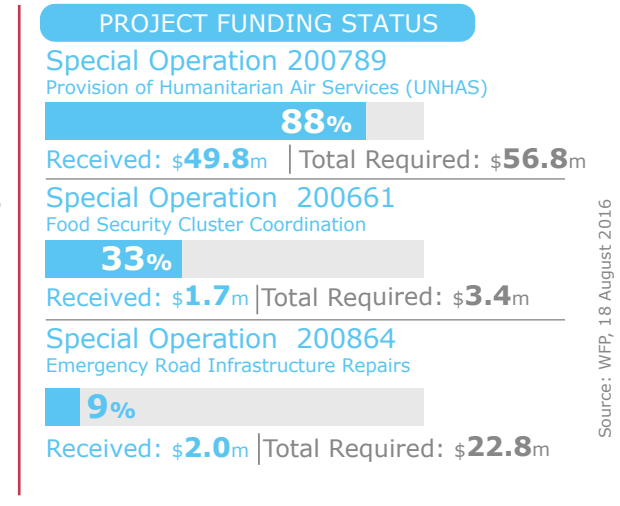
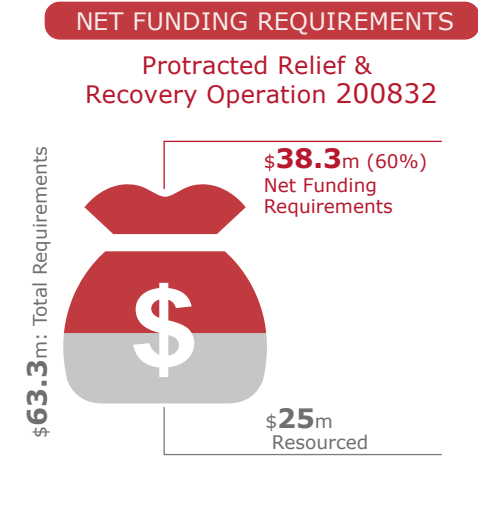


BENEFICIARIES
PRRO 200832*



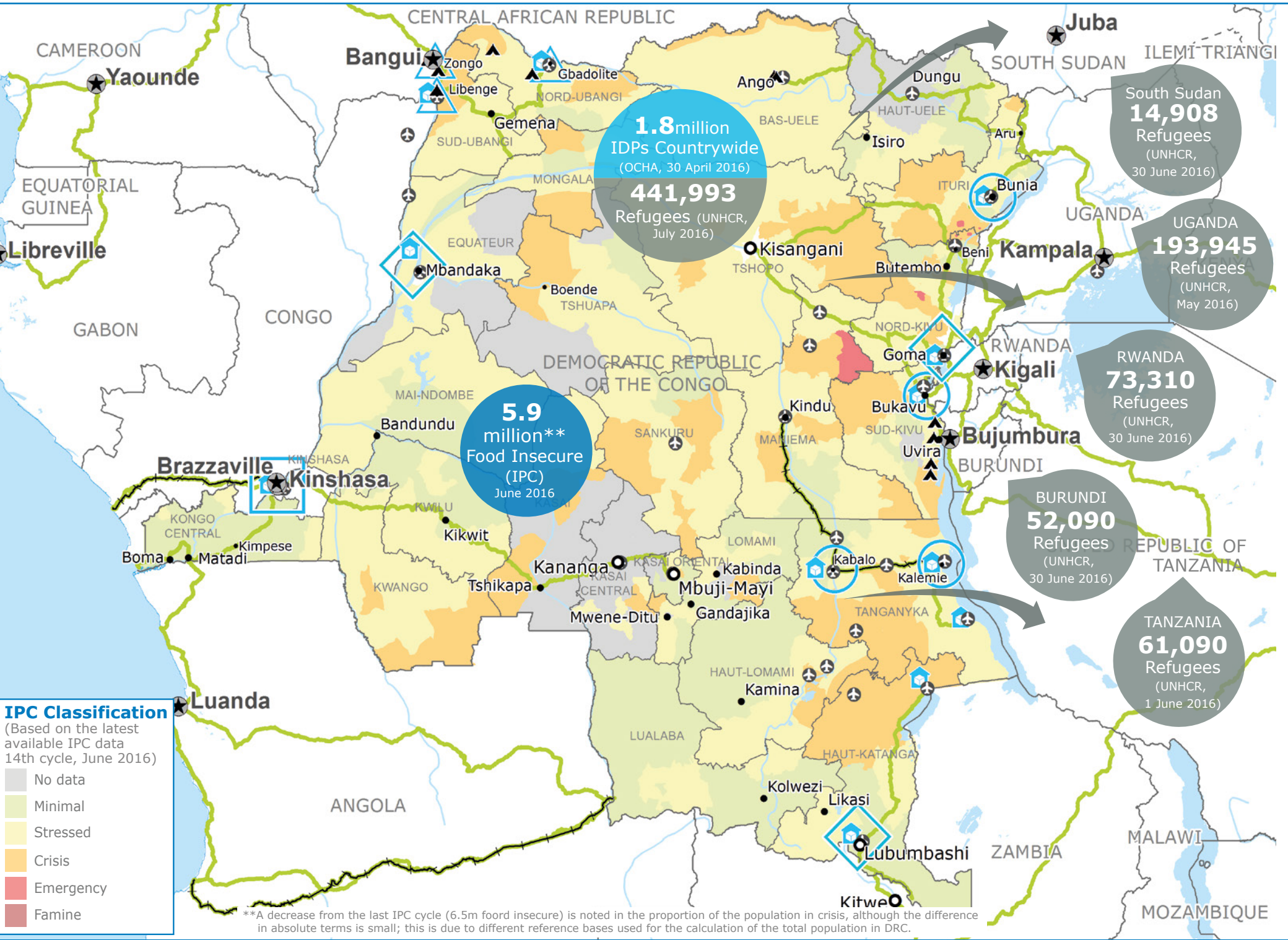
FUNDING
Six Month Outlook



OPERATIONAL CHALLENGES

- Insecurity
- Humanitarian Access

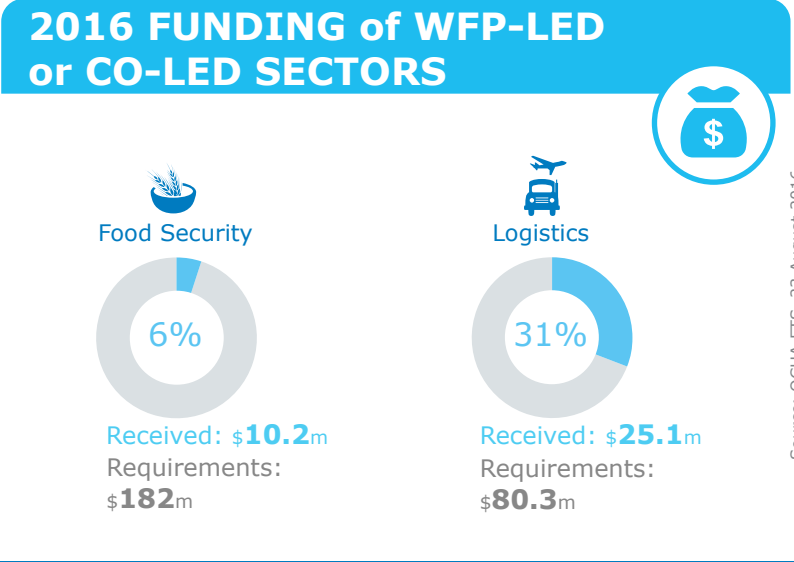
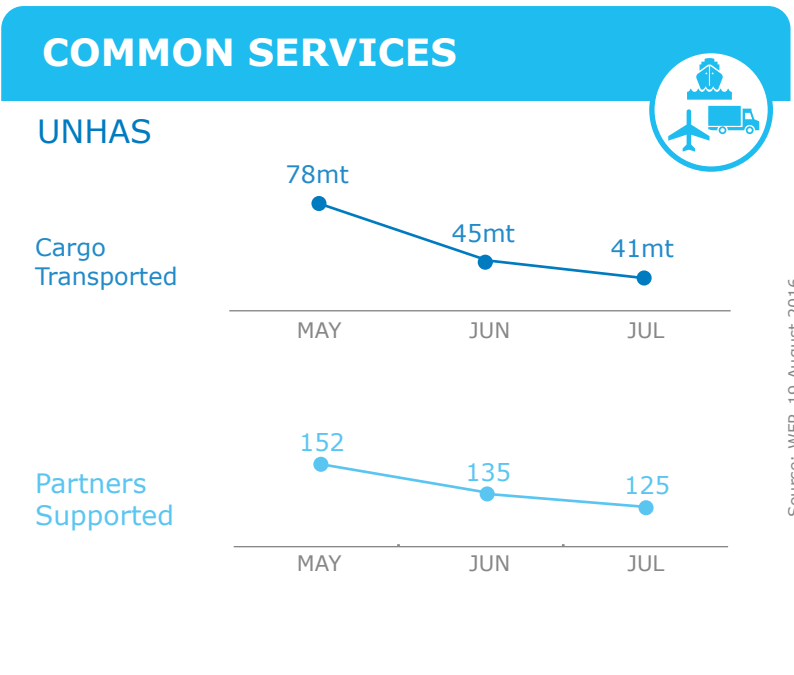
Resources



Legend:

- Country Office
- Field Office
- UNHAS Connection
- National Capital
- International Boundary
- Area Office
- Warehouse
- Province boundary
- Sub Office
- Refugee Camp
- Road Supply Route
- River
- Surface Waterbody
- Major Town
- Intermediate Town
- Small town

Sources: WFP, UNGIWG, GAUL, GLSCS, OCHA, UNHCR, IPC
The designations employed and the presentation of material in the map(s) do not imply the expression of any opinion on the part of WFP concerning the legal or constitutional status of any country, territory, city or sea, or concerning the delimitation of its frontiers or boundaries.
© World Food Programme 2016



WFP LEVEL 2 EMERGENCY
SINCE 12 DECEMBER 2013

2A PRRO 200832
<http://documents.wfp.org/stellent/groups/public/documents/ep/WFP284303.pdf>

Check the **COUNTRY BRIEF**
<http://www.wfp.org/countries/congo-democratic-republic>

Produced by the WFP **Operations Centre (OPSCEN)** jointly with Country Office and Regional Bureau Johannesburg
This dashboard is based on best available information at the time of production. Future updates may vary as new information becomes available.