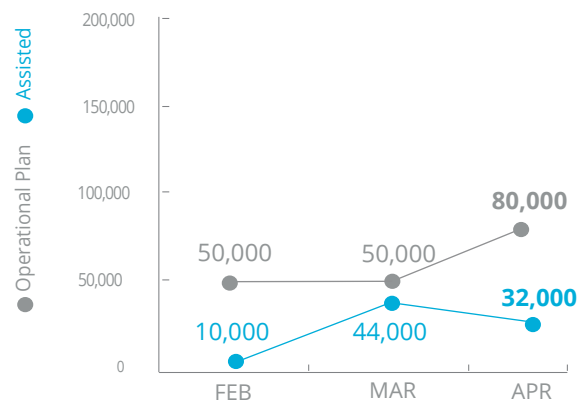


Cameroon North West and South West Crisis



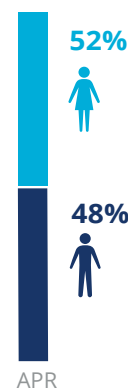
PEOPLE ASSISTED

Cameroon Country Strategic Plan (CSP)



OPERATIONAL PROFILE

By gender



FUNDING

Cameroon Country Strategic Plan (CSP)

May - October 2019
Net funding requirement*

US\$27.7m

SOURCE: WFP, 24 MAY 2019

2019 HUMANITARIAN RESPONSE PLAN (JANUARY - DECEMBER 2019)

15%

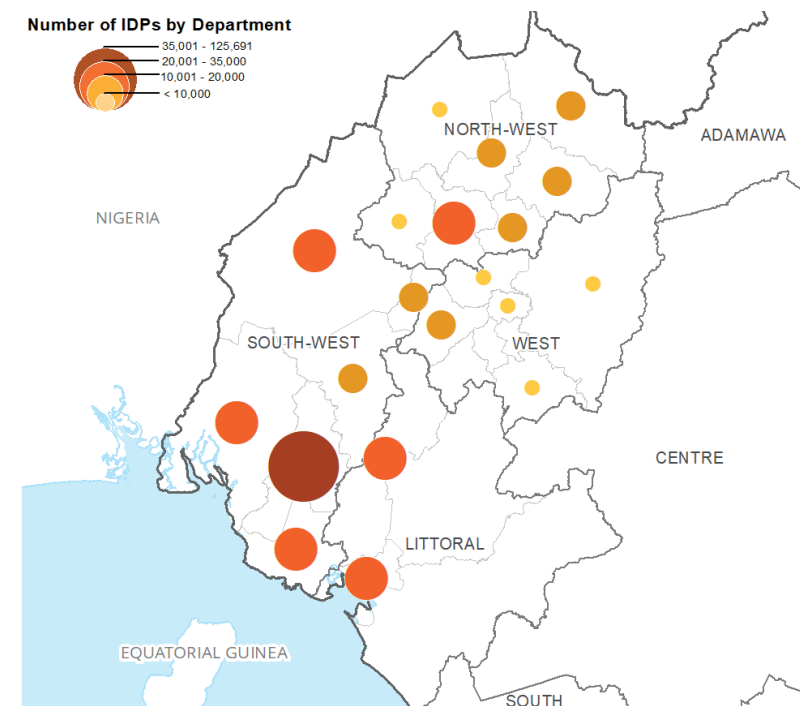
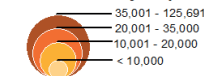
Allocated Contributions: US\$45.3m
Requirement: US\$299m

SOURCE: OCHA FTS, 31 MAY 2019

IDP CONCENTRATION

AS OF SEPTEMBER 2018

Number of IDPs by Department

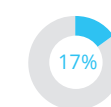


SOURCE: IOM, SEPTEMBER 2018

WFP-LED AND SUPPORTED CLUSTERS



Food Security Cluster



Received: US\$10.2m
Requirements: US\$59.8m

Number of Partners

87



Nutrition Cluster



Received: US\$0 m
Requirements: US\$23.3m

Number of Partners

11

SOURCES: OCHA FTS, Clusters, 29 April 2019

WFP LEVEL 2 EMERGENCY

SINCE 10 December 2018

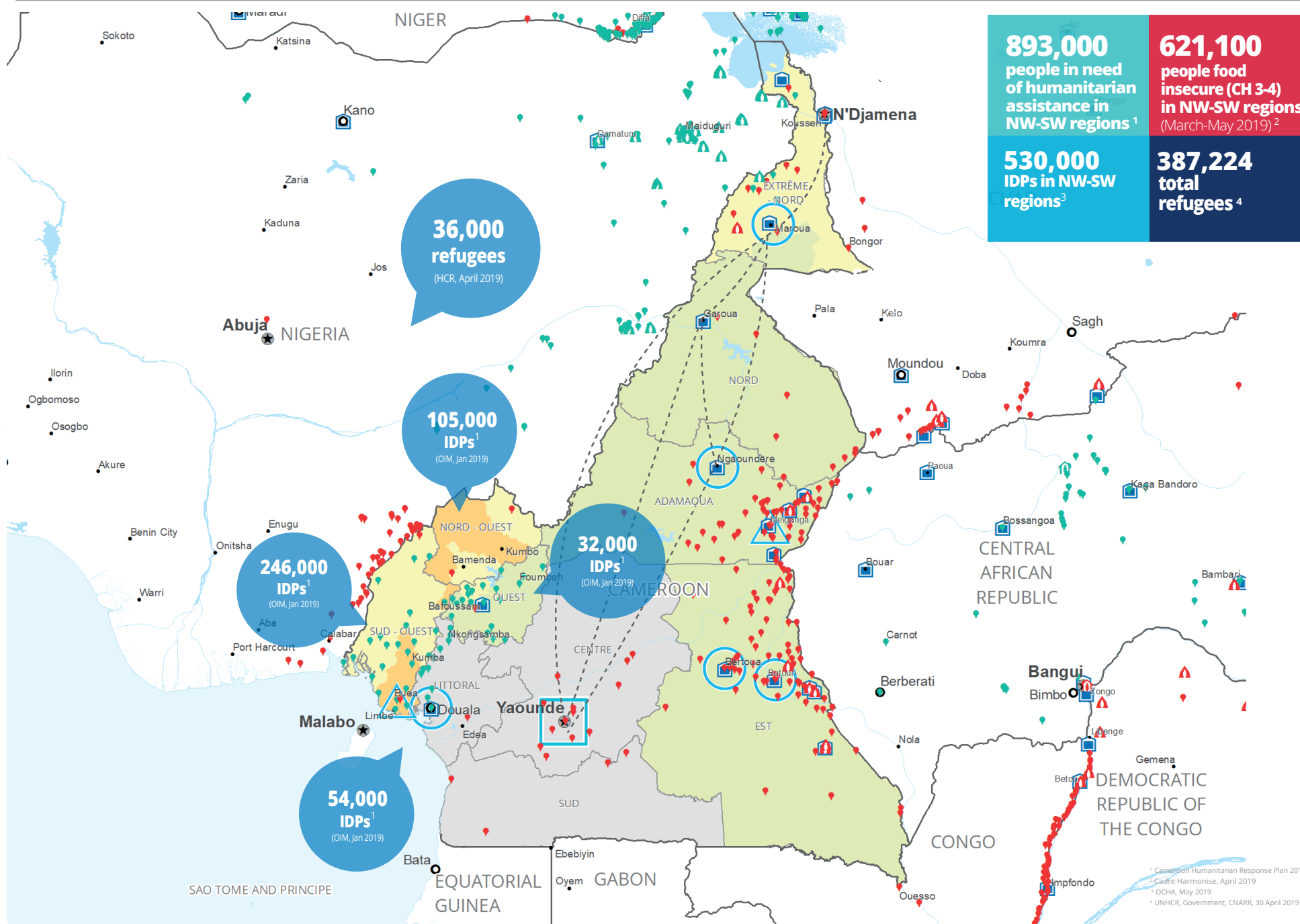
For more information, see the latest SITUATION REPORT and COUNTRY BRIEFS
www.wfp.org/countries/cameroon



Country Strategic Plan (2018-2020)

<http://documents.wfp.org/stellent/groups/public/documents/ep/WFP284303.pdf>

Produced by the WFP Operations Centre (OPSCEN) jointly with Country Office and Regional Bureau Dakar.
This dashboard is based on best available information at the time of production. Future updates may vary as new information becomes available.



- Country Office
- Sub Office
- Field Office
- Warehouse
- IDP Location
- Refugee Location
- Road Supply Route
- Railway Supply Route
- National Capital
- Major Town
- Intermediate Town
- Small Town
- International Boundary
- Region Boundary
- River
- Surface Waterbody

CH Food Security Classification
June - August 2019 Projection

- Minimal (Phase 1)
- Stressed (Phase 2)
- Crisis (Phase 3)

Sources: WFP, OCHA, UNHCR,

The designations employed and the presentation of material in the map(s) do not imply the expression of any opinion on the part of WFP concerning the legal or constitutional status of any country, territory, city or sea, or concerning the delimitation of its frontiers or boundaries.
© World Food Programme 2019.