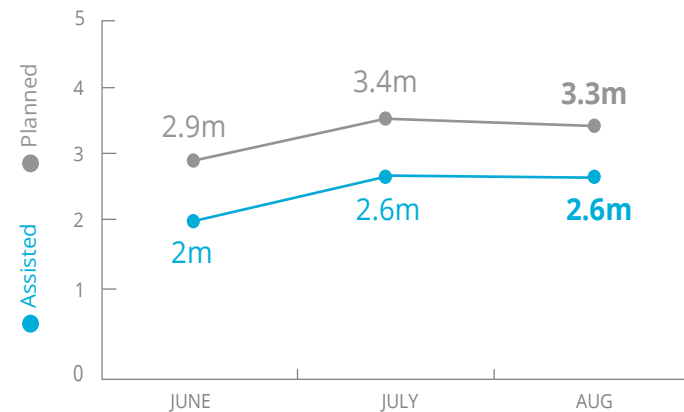


Sahel



PEOPLE TARGETED

Across Burkina Faso, Chad, Mali, Mauritania and Niger



SOURCE: RB, 21 SEPTEMBER 2018

ASSISTANCE BREAKDOWN

August

BURKINA FASO	58%	REACHED: 423,590	Targeted: 725,683
CHAD	97%	REACHED: 617,133	Targeted: 635,412
MALI	80%	REACHED: 624,020	Targeted: 776,450
MAURITANIA	59%	REACHED: 246,794	Targeted: 421,594
NIGER	75%	REACHED: 673,328	Targeted: 902,041

SOURCE: RB, 21 SEPTEMBER 2018



OPERATIONAL PROFILE

WFP Country Operations

	Activity/modality
BURKINA FASO	General Food Assistance (in-kind food)
CHAD	General Food Assistance (cash-based transfers)
MALI	General Food Assistance (cash-based transfers)
MAURITANIA	Food Assistance for Assets
NIGER	Nutrition



FUNDING

WFP 2018 Sahel Lean Season Response (April – September 2018)

BURKINA FASO	51%	Allocated Contributions: USD21.2m Requirement: USD41.9m
CHAD	61%	Allocated Contributions: USD42.4m Requirement: USD69m
MALI	74%	Allocated Contributions: USD52m Requirement: USD70.2m
MAURITANIA	46%	Allocated Contributions: USD15.5m Requirement: USD33.4m
NIGER	42%	Allocated Contributions: USD28.5m Requirement: USD67.8m

TOTAL:

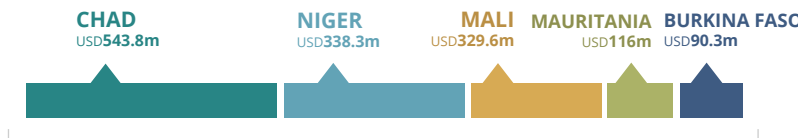
57%	Allocated Contributions: USD145.5m Requirement: USD282.3m
-----	--

SOURCE: WFP, 27 SEPTEMBER 2018



2018 HUMANITARIAN REQUIREMENTS

Inter-Agency Humanitarian Response / Work Plans



Total: **USD1.42bn**

SOURCE: OCHA, JUNE 2018

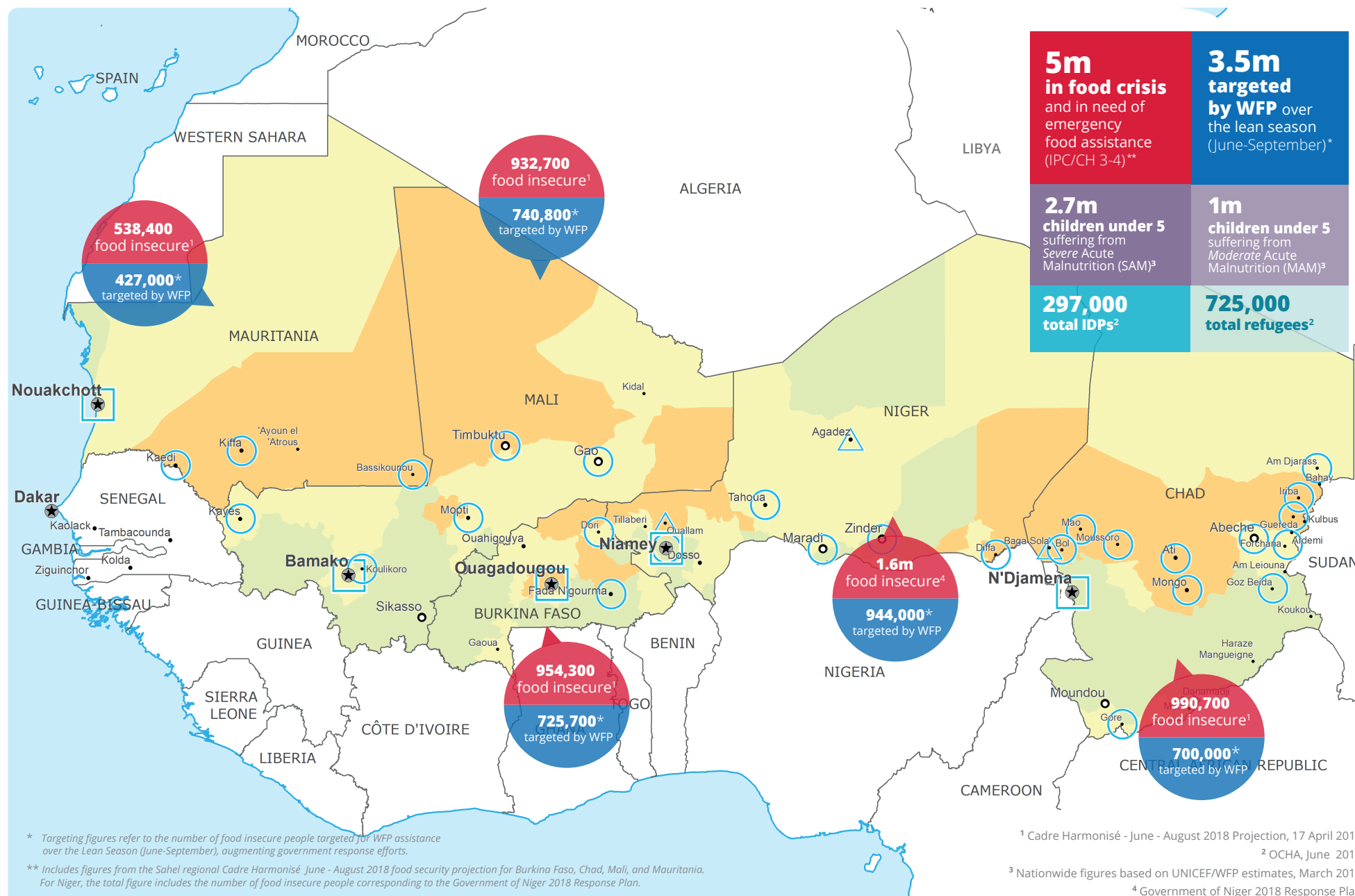
WFP LEVEL 3 EMERGENCY

SINCE 06 JUNE 2018

REGIONAL LEVEL 3 EMERGENCY COVERING WFP OPERATIONS IN
CHAD, BURKINA FASO, MALI, MAURITANIA, AND NIGER

For more information, see the [SITUATION REPORT](#) and [COUNTRY BRIEFS](#)
www.wfp.org

Produced by the WFP Operations Centre (OPSCEN) jointly with relevant Country Offices and Regional Bureau Dakar. This dashboard is based on best available information at the time of production. Future updates may vary as new information becomes available.



Cadre Harmonisé
Food Security
Projection¹
(June-August 2018)

- Minimal (Phase 1)
- Stressed (Phase 2)
- Crisis (Phase 3)
- Emergency (Phase 4)
- Famine (Phase 5)

- Country Office
- Sub Office
- Field Office
- Warehouse

- Road Supply Route
- UNHAS Route
- UNHAS Connection

- National Capital
- Major Town
- Intermediate Town
- Small Town

- International Boundary
- Region Boundary
- River
- Surface Waterbody

Sources: WFP, UNGIWG, GAUL, GLSCS, OCHA, UNHCR.

The designations employed and the presentation of material in the map(s) do not imply the expression of any opinion on the part of WFP concerning the legal or constitutional status of any country, territory, city or sea, or concerning the delimitation of its frontiers or boundaries.
© World Food Programme 2018.