



World Food Programme

May 2020

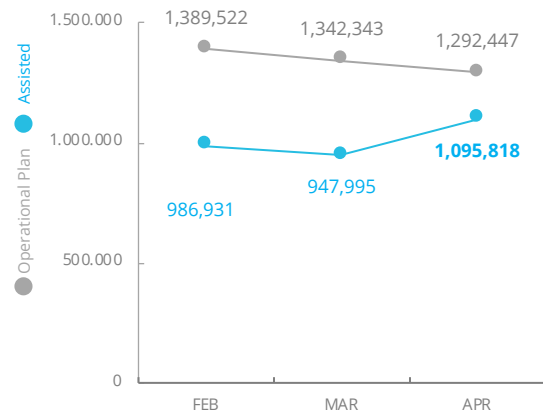
Emergency Dashboard

SAVING LIVES  
CHANGING LIVES

# Democratic Republic of Congo

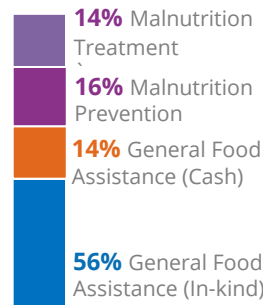
## PEOPLE ASSISTED

DR Congo Interim Country Strategic Plan

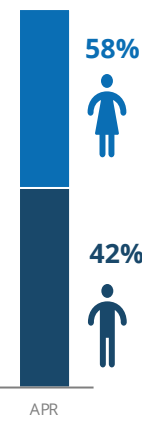


## OPERATIONAL PROFILE

By Activity



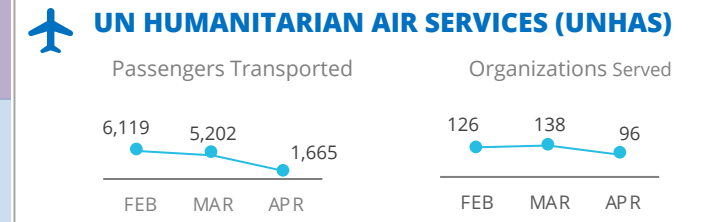
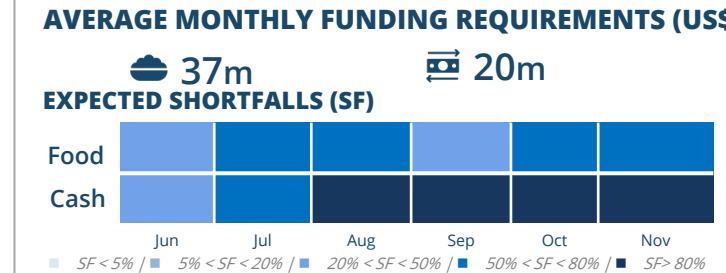
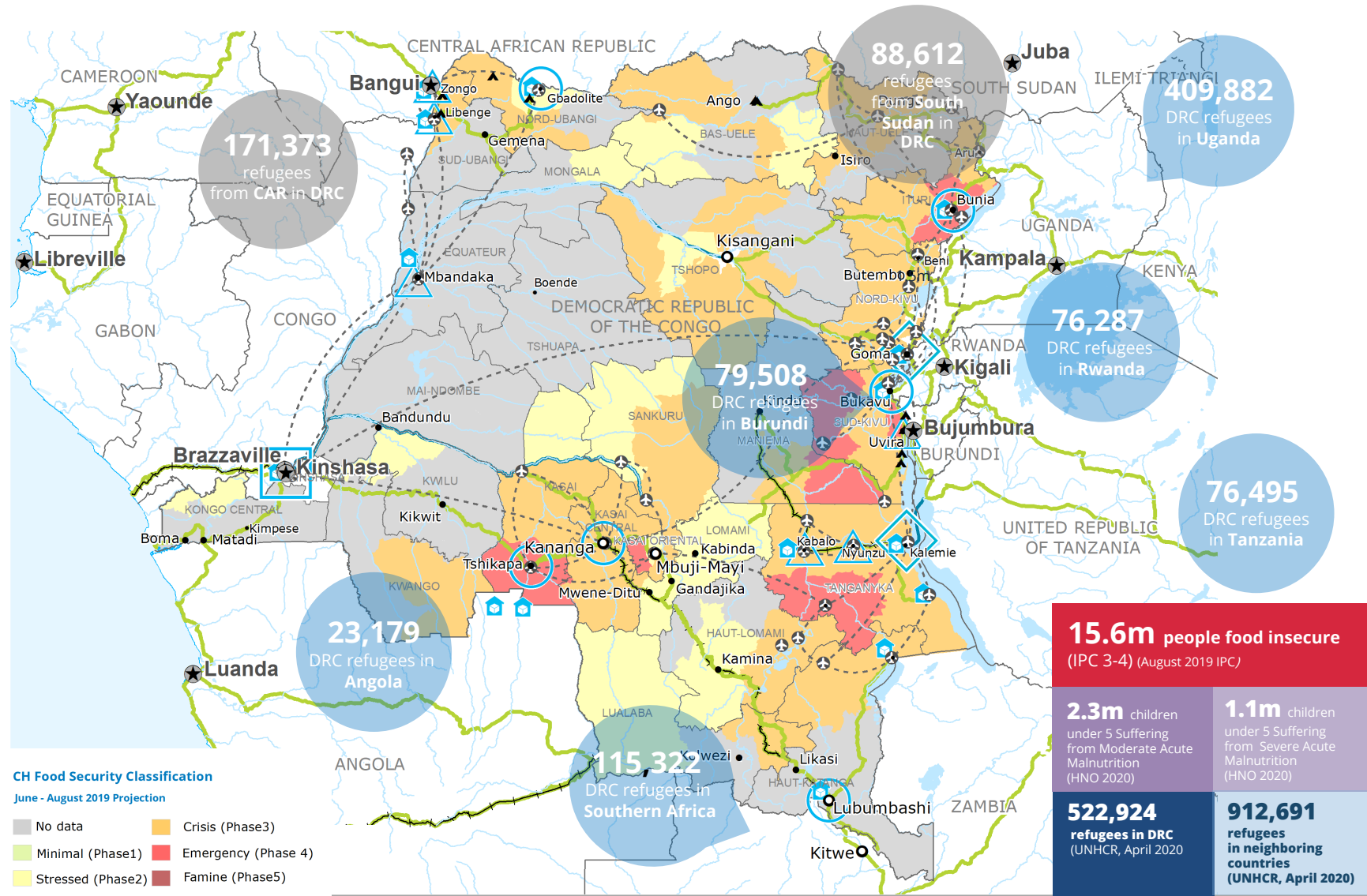
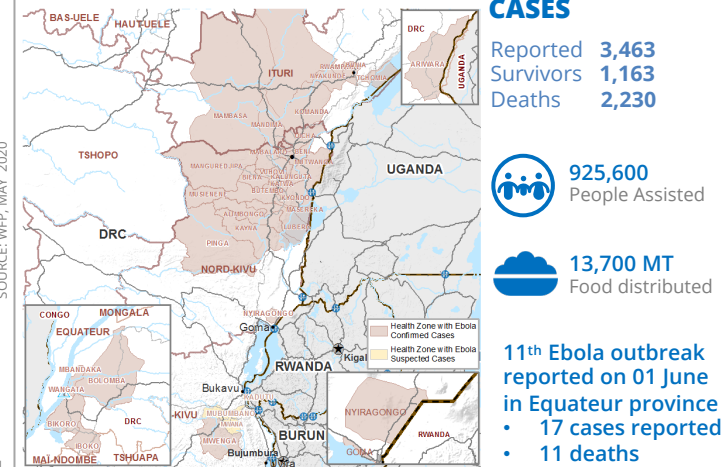
By Gender



## COVID-19 OPERATIONAL IMPACT

- Status: WFP Response adjusted
- Delayed distribution timelines
  - Crowd control and social distancing measures at distribution sites
  - Mandatory hygiene measures at distribution sites
  - School feeding through take home rations
- Legend: ✔ Ongoing ! Partially Suspended ✘ Suspended

## EBOLA OUTBREAK\*



**WFP LEVEL 3 EMERGENCY**

SITUATION REPORT and COUNTRY BRIEF

Gender Age Marker 4

Sources: WFP, UNGIWI, GAUL, GLCSC, OCHA, UNHCR, IPC. The designations employed and the presentation of material in the map(s) do not imply the expression of any opinion on the part of WFP concerning the legal or constitutional status of any country, territory, city or sea, or concerning the delimitation of its frontiers or boundaries. © World Food Programme 2020.