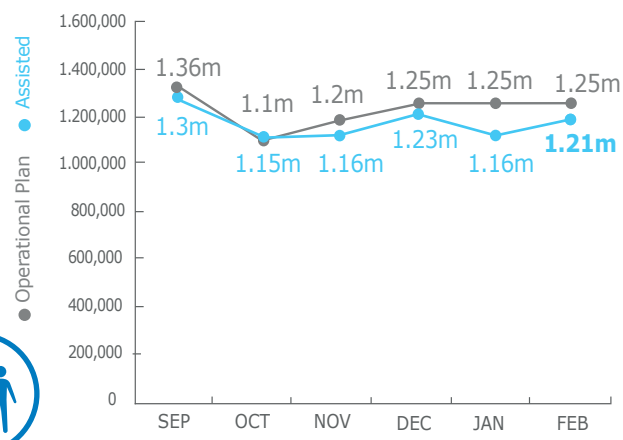


PEOPLE ASSISTED

Emergency Operation 200777



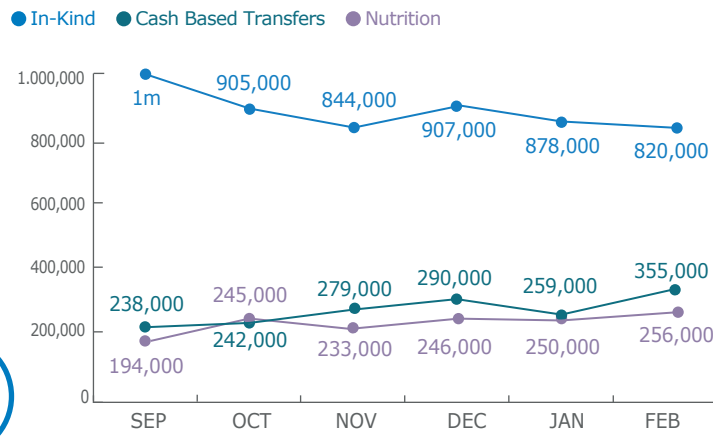
NIGERIA



OPERATIONAL PROFILE



BY ACTIVITY



Figures should not be added to avoid double-counting

Source: WFP, 15 March 2018

FUNDING



Nigeria component of Regional Emergency Operation 200777

April-September 2018
US\$93.2m*
Net Funding Requirements

*Including outstanding advances recorded at regional level for Nigeria.

Source: WFP, 29 March 2018

PROJECT RESOURCES: COMMON SERVICES

Special Operation 200834
UN Humanitarian Air Services (UNHAS) Nigeria



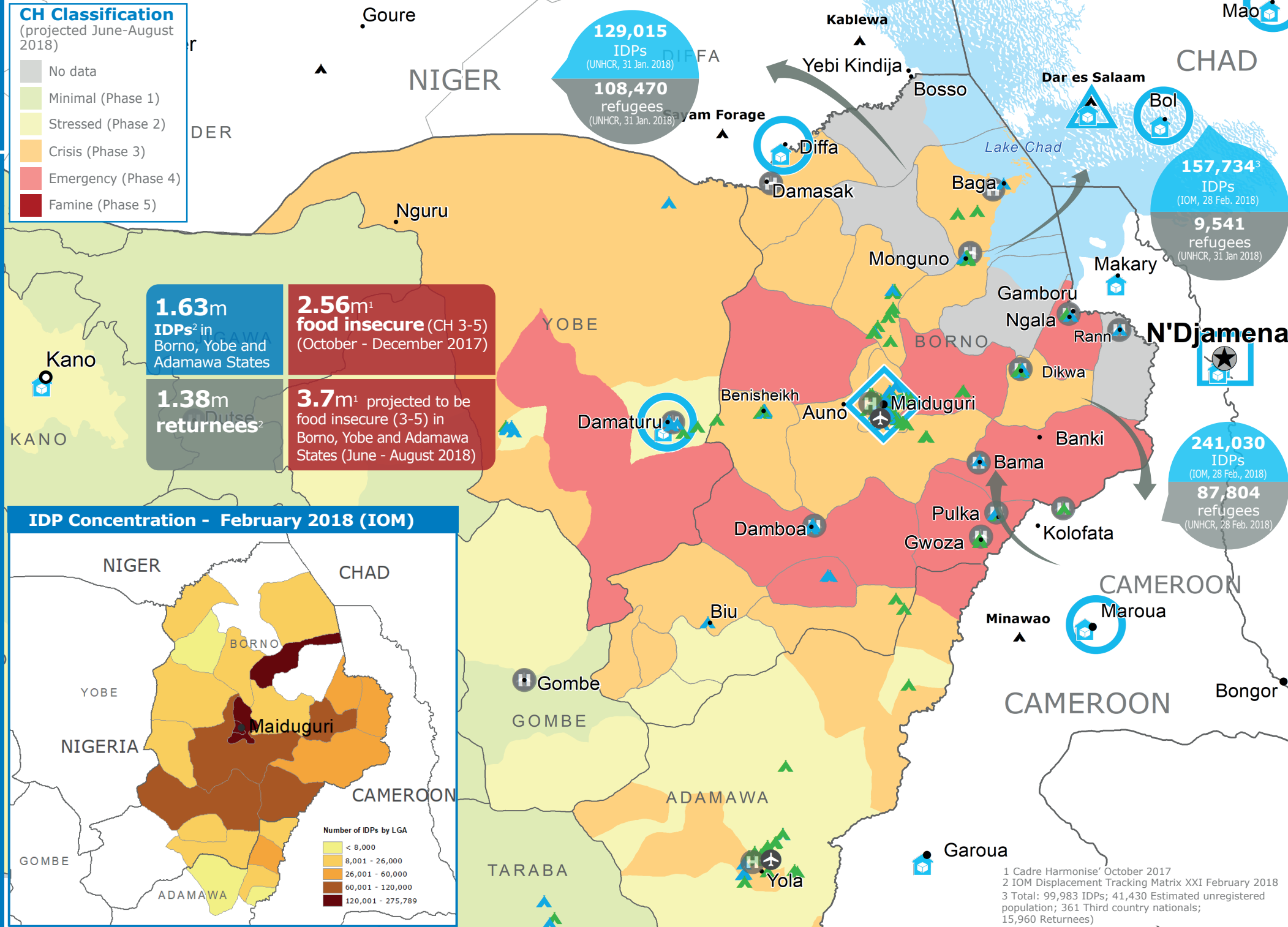
Special Operation 201032
(Logistics and Emergency Telecommunication Sectors)



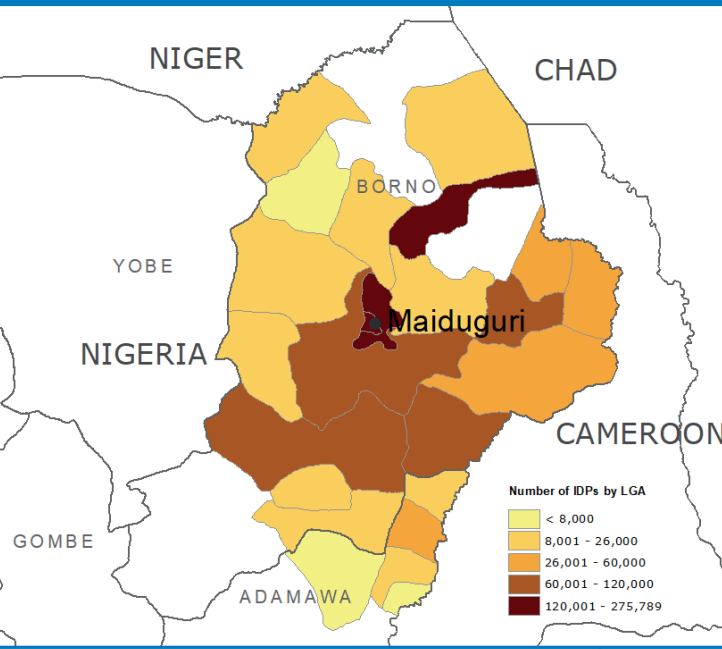
Source: WFP, 26 February 2018

CH Classification

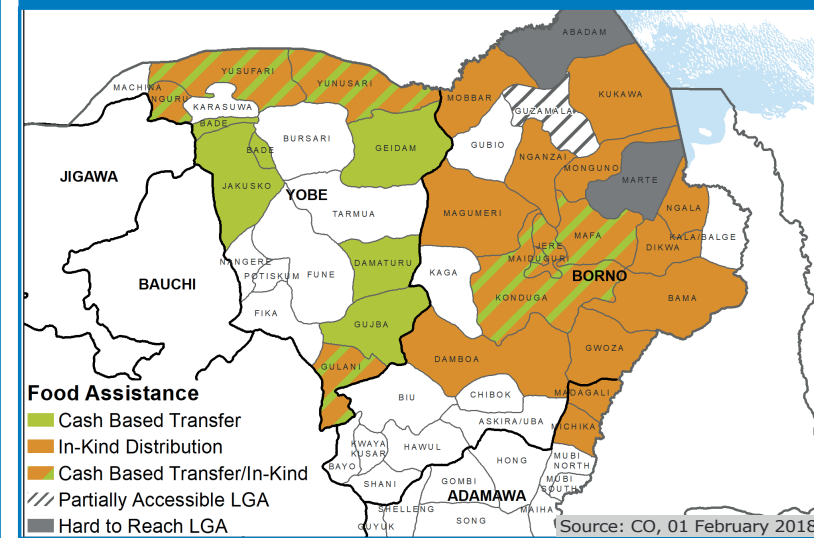
(projected June-August 2018)



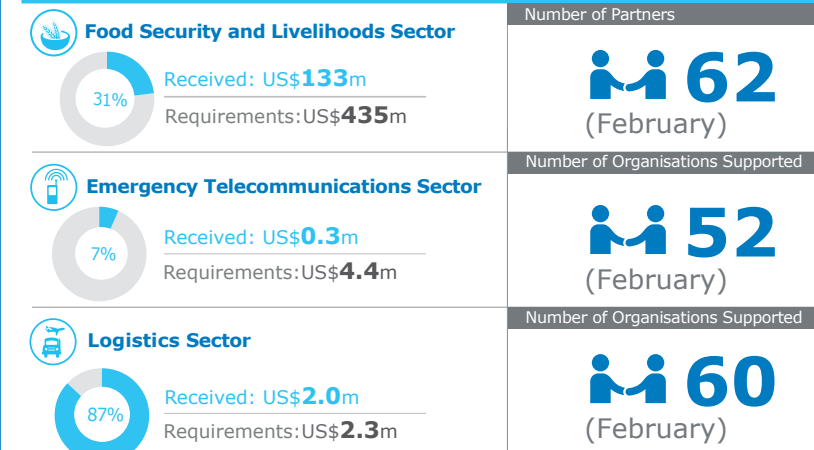
IDP Concentration - February 2018 (IOM)



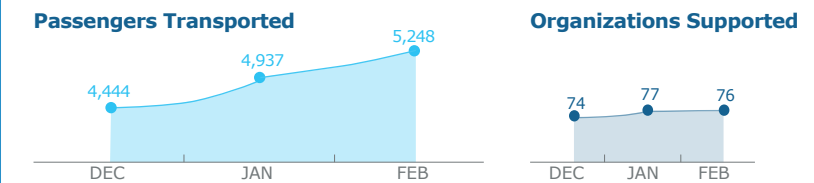
WFP OPERATIONAL PRESENCE AND FOOD ASSISTANCE MODALITIES



WFP LED & CO-LED SECTORS



UN Humanitarian Air Service (UNHAS)



Source: OCHA FTS, 21 March; Clusters, 29 March 2018

WFP LEVEL 3 EMERGENCY SINCE 11 AUGUST 2016

For more information, see the **SITUATION REPORT** and **COUNTRY BRIEF** www.wfp.org/countries/nigeria

2A Regional Emergency Operation 200777
documents.wfp.org/stellent/groups/public/documents/ep/WFP284303.pdf

Produced by the WFP Operations Centre (OPSCEN) jointly with Country Office and Regional Bureau Dakar

This dashboard is based on best available information at the time of production. Future updates may vary as new information becomes available.



Sources: WFP, UNGIWG, GAUL, GLCSC, UNHCR, IOM, IPC/CH.

The designations employed and the presentation of material in the map(s) do not imply the expression of any opinion on the part of WFP concerning the legal or constitutional status of any country, territory, city or sea, or concerning the delimitation of its frontiers or boundaries.
© World Food Programme 2018