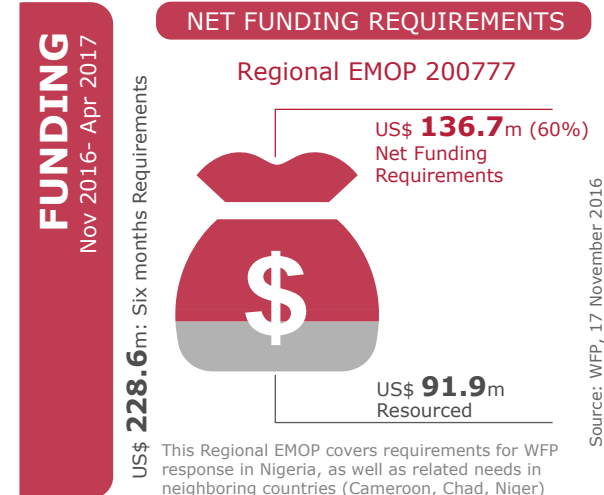
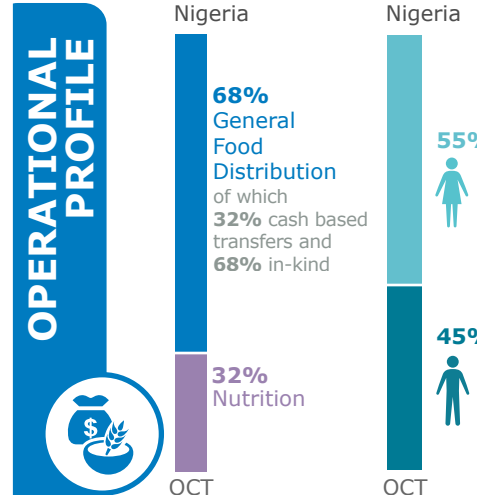
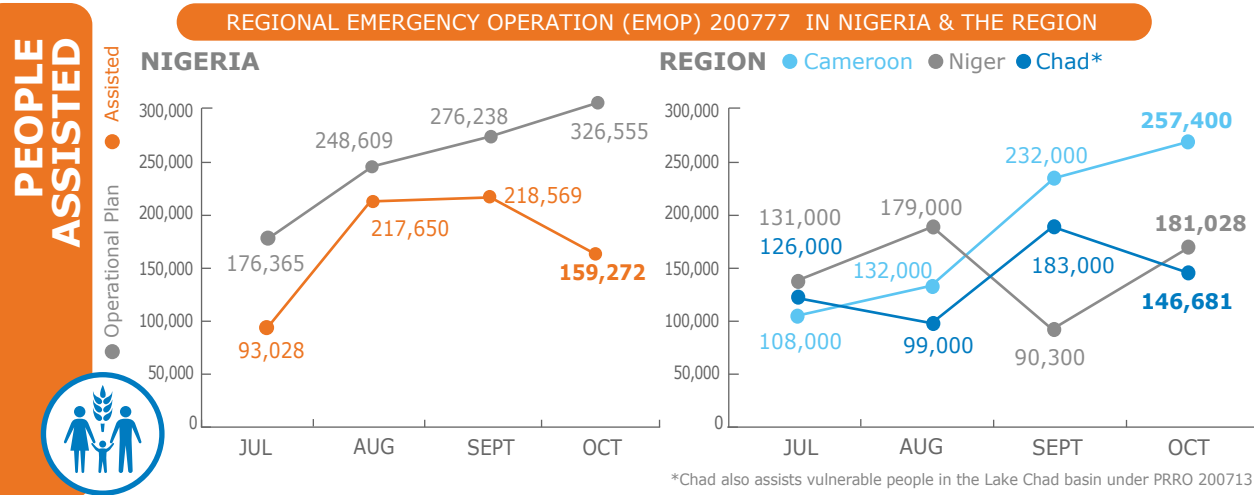
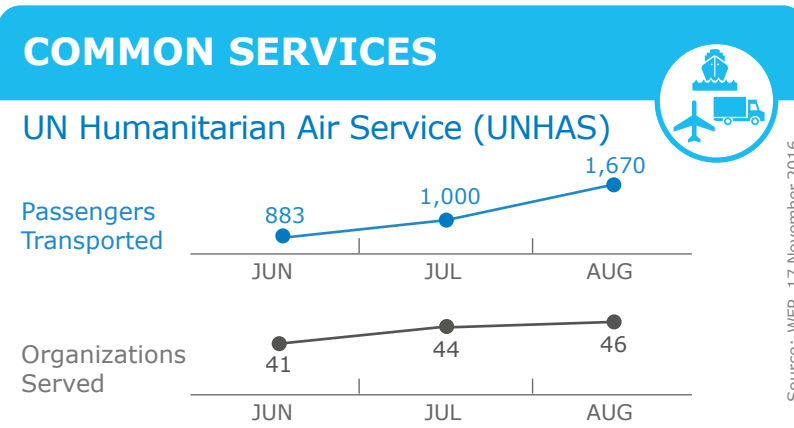
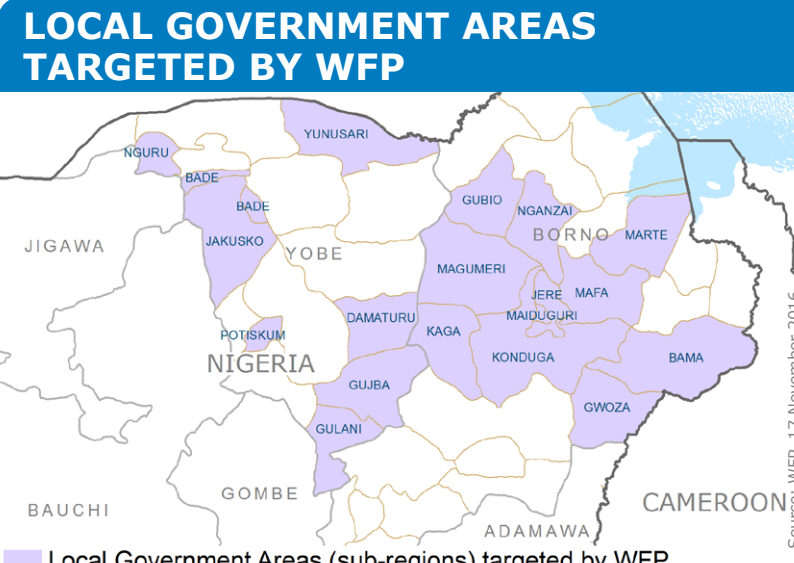
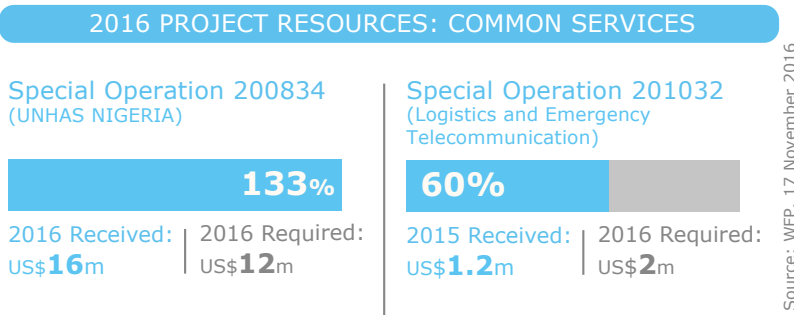
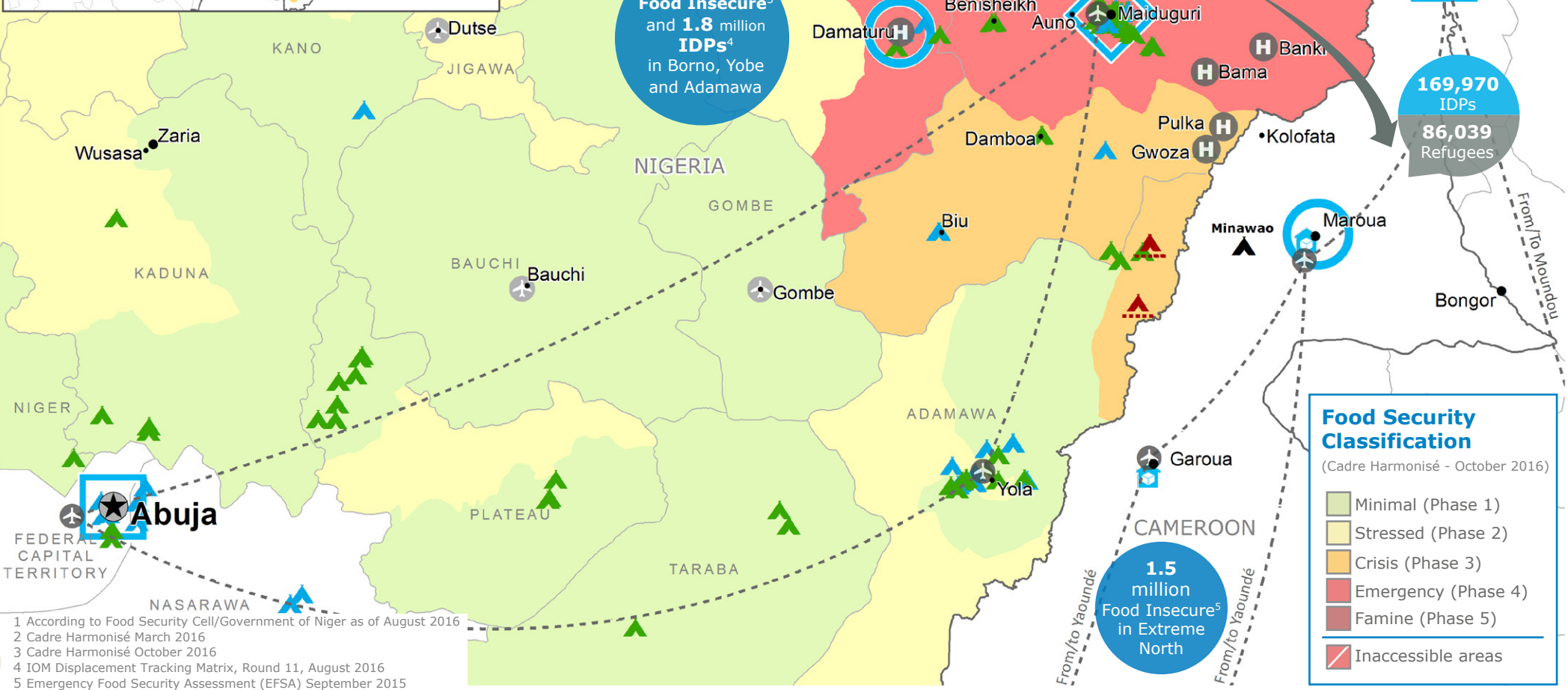
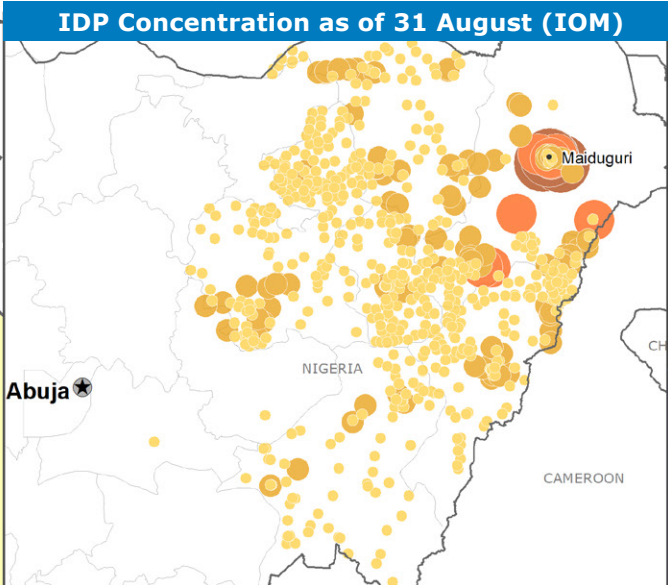


**WFP SAYS NO to GENDER BASED VIOLENCE**



### OPERATIONAL CHALLENGES

- Insecurity
- Humanitarian Access
- Economic Volatility
- Limited Partners



**WFP LEVEL 3 EMERGENCY**

SINCE 11 AUGUST 2016

For more information, see the **SITUATION REPORT** and **COUNTRY BRIEF** [www.wfp.org/countries/nigeria](http://www.wfp.org/countries/nigeria)

**2A REGIONAL EMOP 200777**

[documents.wfp.org/stellent/groups/public/documents/ep/WFP284303.pdf](http://documents.wfp.org/stellent/groups/public/documents/ep/WFP284303.pdf)

Produced by the WFP **Operations Centre (OPSCEN)** jointly with Country Office and Regional Bureau Dakar

This dashboard is based on best available information at the time of production. Future updates may vary as new information becomes available.

**Country Office** (Square) **UNHAS Connection** (Circle) **UNHAS Route** (Dashed line)

**Area Office** (Diamond) **Ad-Hoc Fixed-Wing Destination** (Circle with dot) **WFP Warehouse** (House icon)

**Sub Office** (Circle) **Ad-Hoc Rotary-Wing Destination** (Circle with dot) **Refugee Camp** (Triangle)

**Field Office** (Triangle) **IDPs Site Type** (Triangle)

**Number of IDPs in Hosted Communities - October 2016 (IOM)**

- 25,001 - 39,792
- 10,001 - 25,000
- 1,001 - 10,000
- 5 - 1,000

**National Capital** (Star) **International Boundary** (Dashed line)

**Major Town** (Circle) **Region Boundary** (Solid line)

**Intermediate Town** (Dot) **Small Town** (Dot)

Sources: WFP, UNGIWG, GAUL, GLCSC, UNHCR, IOM. UNHCR Nigeria Displacement Dashboard June 2016

The designations employed and the presentation of material in the map(s) do not imply the expression of any opinion on the part of WFP concerning the legal or constitutional status of any country, territory, city or sea, or concerning the delimitation of its frontiers or boundaries. © World Food Programme 2016