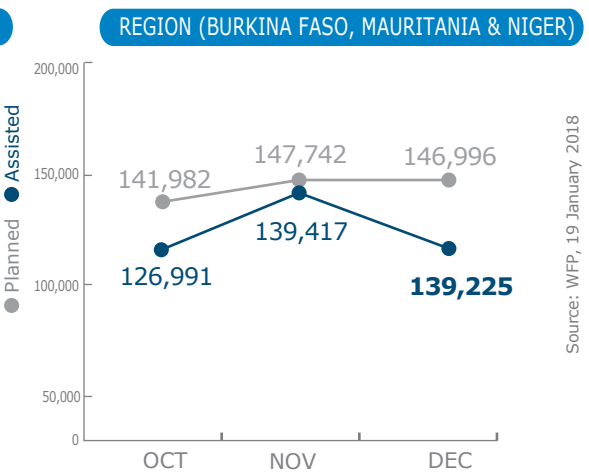
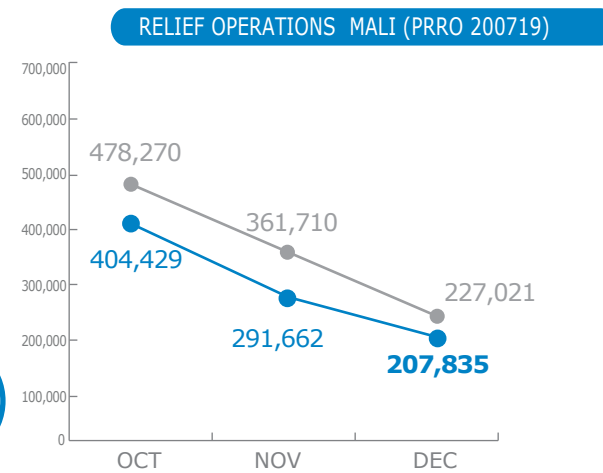
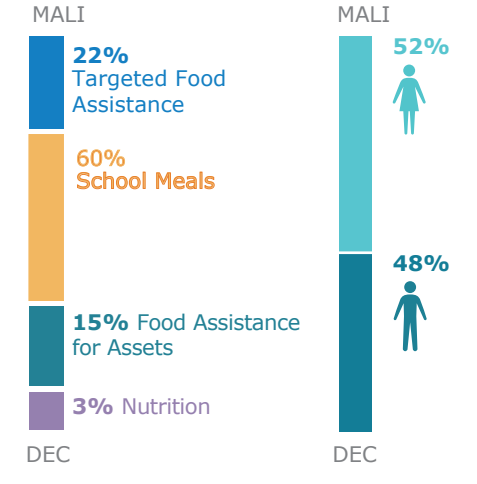


PEOPLE ASSISTED



Source: WFP, 19 January 2018

OPERATIONAL PROFILE

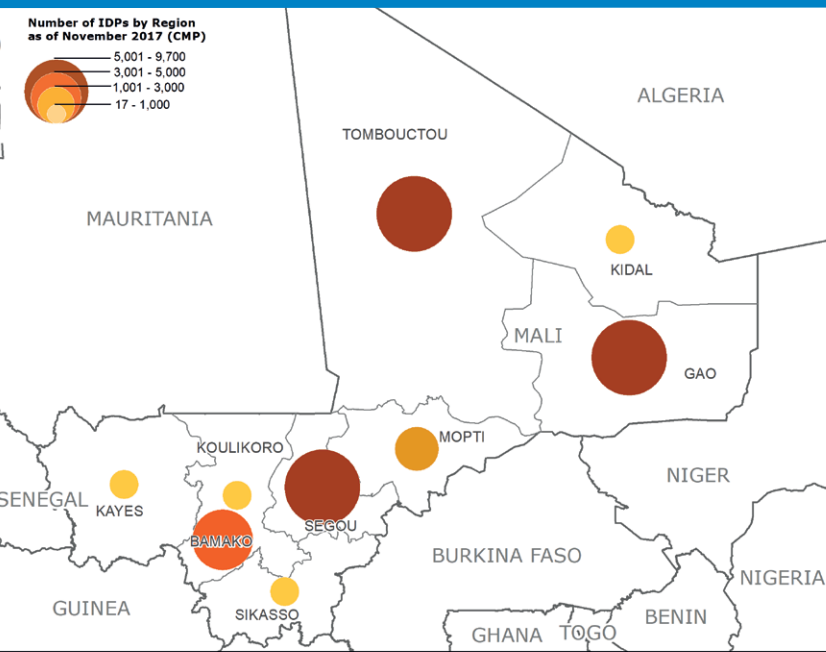


Mali Transitional Interim Country Strategic Plan (T-ICSP)

February – July 2018
US\$40m
Net Funding Requirements
2018 operations 15% funded

Source: WFP, 29 January 2018

IDP Concentration as of 09 November 2018 (CMP)



Food Security Classification

(Cadre Harmonisé - Nov 2017)

- Minimal (Phase 1)
- Stressed (Phase 2)
- Crisis (Phase 3)
- Emergency (Phase 4)
- Famine (Phase 5)

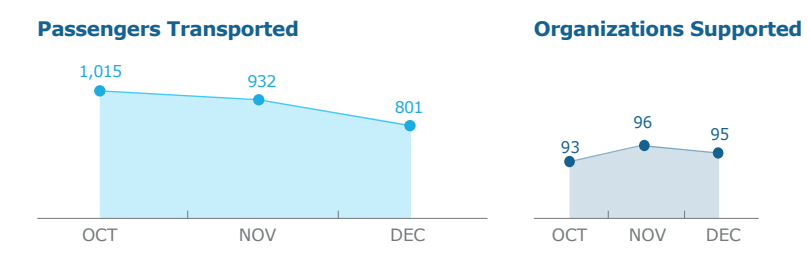
WFP LED & CO-LED SECTORS

Food Security and Livelihoods Sector

Received: US\$0m
Requirements: US\$103m

Number of Partners: **120** (2017)

UN Humanitarian Air Service (UNHAS)



Source: OCHA FTS, 26 January 2018; WFP, 22 January 2018

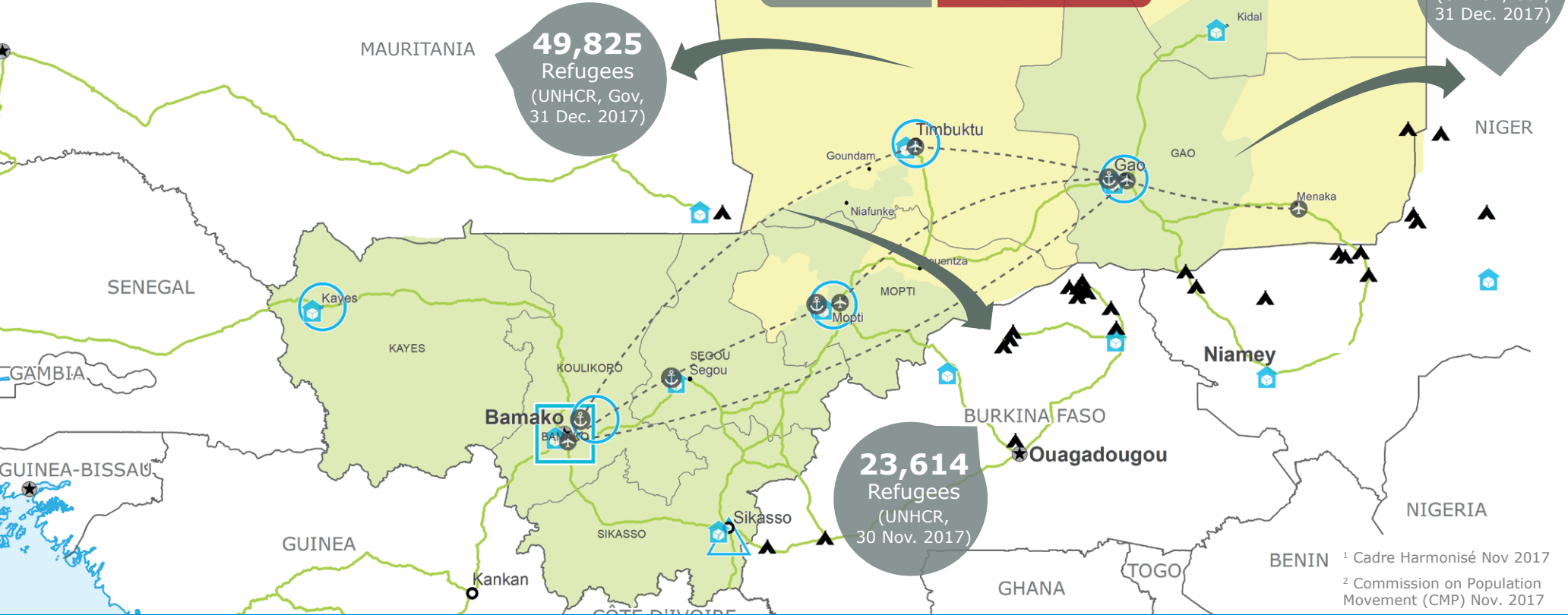
WFP LEVEL 2 EMERGENCY SINCE 12 JANUARY 2012

For more information, see the **SITUATION REPORT** and **COUNTRY BRIEF** www.wfp.org/countries/mali

2A RELIEF OPERATION 200719
<http://documents.wfp.org/stellent/groups/public/documents/ep/WFP284303.pdf>

Produced by the WFP **Operations Centre (OPSCEN)** jointly with Country Office and Regional Bureau Dakar

This dashboard is based on best available information at the time of production. Future updates may vary as new information becomes available.



Country Office	Warehouse	National Capital	International boundary
Sub Office	UNHAS Connection	Major Town	Region boundary
Field Office	UNHAS Route	Intermediate Town	River
	Road Supply Route	Small Town	Surface Waterbody

Sources: WFP, UNGIWG, GAUL, GLCSC, OCHA, UNHCR, Cadre Harmonisé (Nov 2017). The designations employed and the presentation of material in the map(s) do not imply the expression of any opinion on the part of WFP concerning the legal or constitutional status of any country, territory, city or sea, or concerning the delimitation of its frontiers or boundaries. © World Food Programme 2018.