



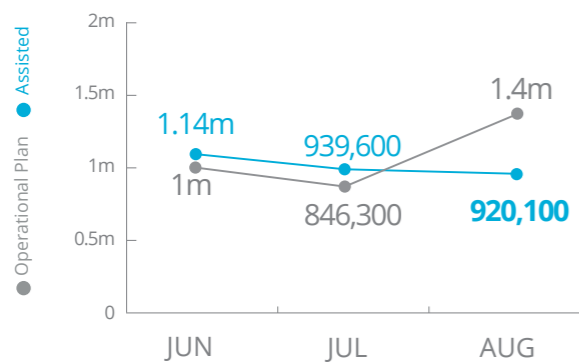
World Food Programme

# Democratic Republic of Congo



## PEOPLE ASSISTED

DR Congo Interim Country Strategic Plan (ICSP)

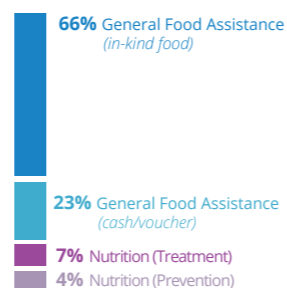


SOURCE: WFP, 24 SEPTEMBER 2018



## OPERATIONAL PROFILE

By activity/modality



AUGUST

Percentages may include overlaps, i.e. beneficiaries that have been assisted through two or more

By gender



AUGUST

SOURCE: WFP, 24 JULY 2018



## FUNDING

DR Congo Interim Country Strategic Plan (ICSP)

October 2018 – March 2019

# US\$195.3m

Net funding requirement

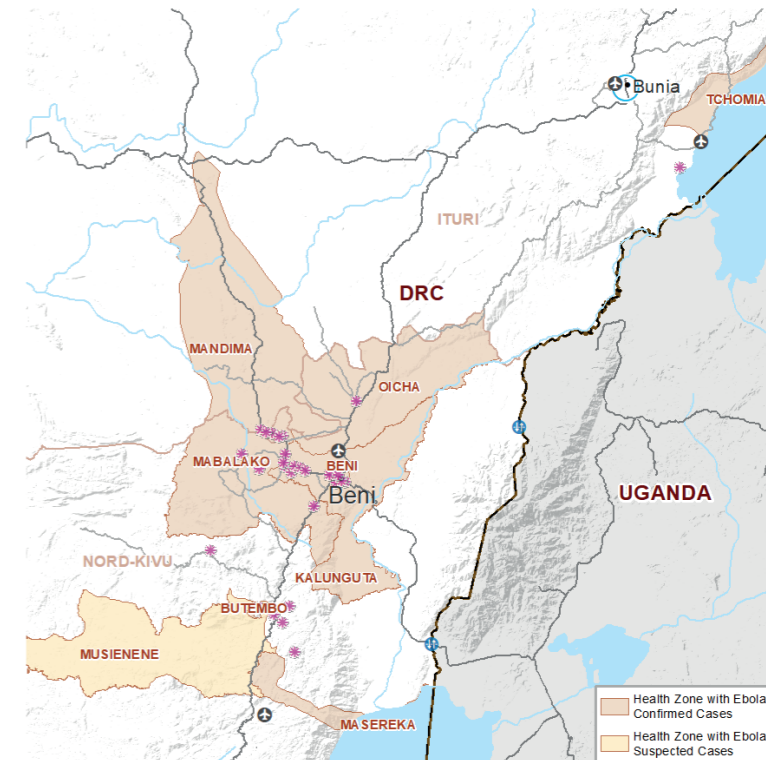
2018 LEVEL 3 RESPONSE\*



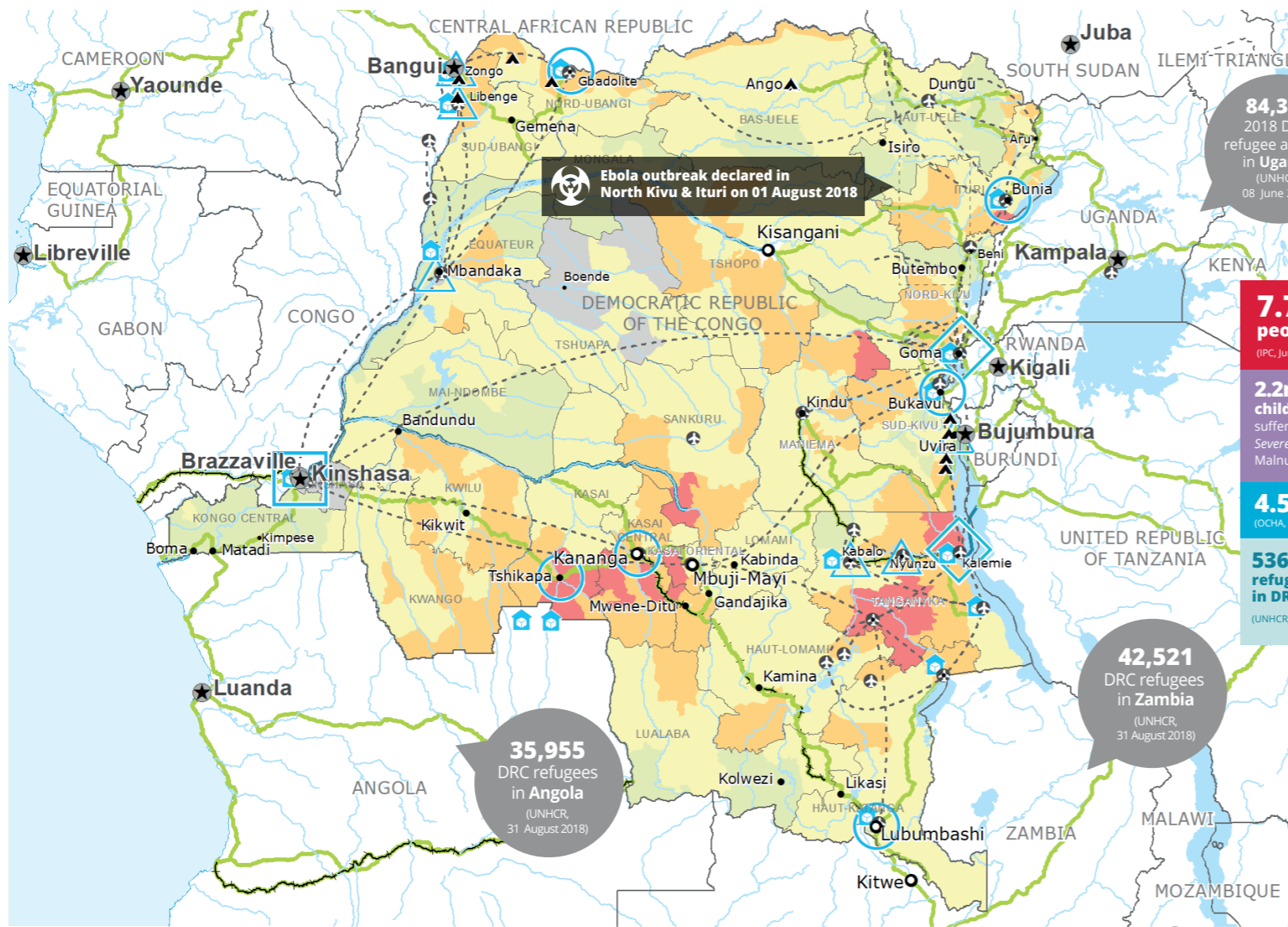
SOURCE: WFP, 27 SEPTEMBER 2018

## EBOLA AFFECTED HEALTH ZONES

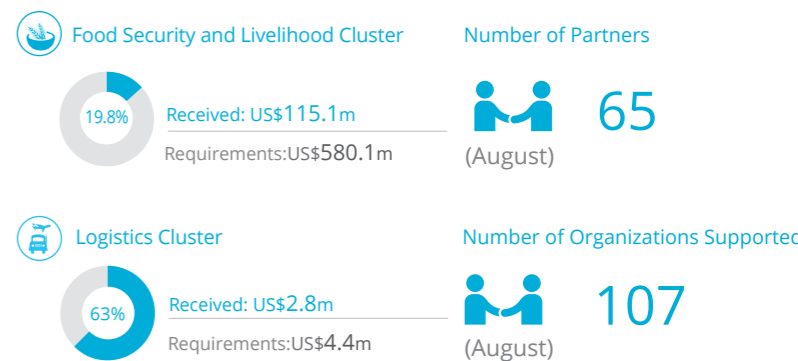
AS OF 30 AUGUST 2018



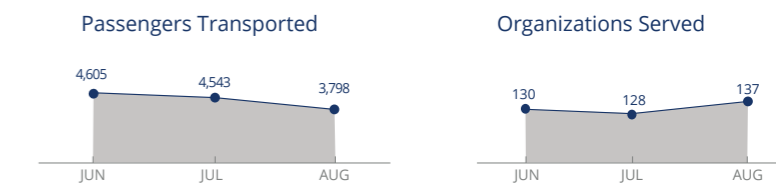
SOURCE: WHO, 30 AUGUST 2018



## WFP LED & SUPPORTED CLUSTERS



## UN Humanitarian Air Service (UNHAS)



SOURCES: OCHA FTS, 25 SEPTEMBER 2018; WFP, 24 SEPTEMBER 2018; CLUSTERS, 24 SEPTEMBER 2018

## WFP LEVEL 3 EMERGENCY

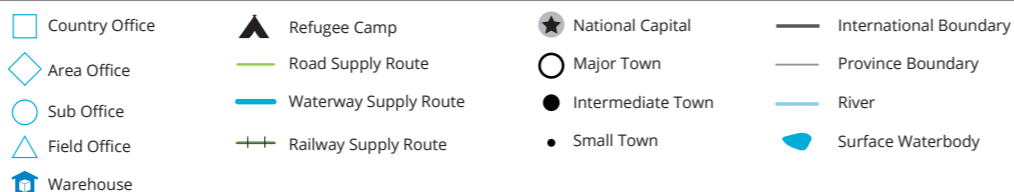
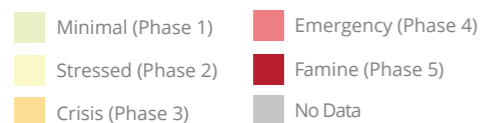
SINCE 06 OCTOBER 2017 (LEVEL 2 EMERGENCY SINCE 12 DEC 2013)

For more information, see the SITUATION REPORT and COUNTRY BRIEF [www.wfp.org/countries/congo-democratic-republic](http://www.wfp.org/countries/congo-democratic-republic)

2A Interim Country Strategic Plan (2018-2020)

Produced by the WFP Operations Centre (OPSCEN) jointly with Country Office and Regional Bureau Johannesburg. This dashboard is based on best available information at the time of production. Future updates may vary as new information becomes available.

## IPC Food Security Classification (June 2017)



Sources: WFP, UNGIWG, GAUL, GLCSO, OCHA, UNHCR, IPC.

The designations employed and the presentation of material in the map(s) do not imply the expression of any opinion on the part of WFP concerning the legal or constitutional status of any country, territory, city or sea, or concerning the delimitation of its frontiers or boundaries. © World Food Programme 2018.