

WFP Mozambique Flood Response Update

21 June 2019



In Numbers

Cyclone Idai

1.85 million people affected

4 provinces and **50** districts affected

3,564 people displaced in **6** accommodation centres and **43,348** people displaced in **44** resettlement sites

1.6 million people received food assistance

Cyclone Kenneth

373,857 people in need of humanitarian assistance in Nampula and Cabo Delgado (HRP)

2 provinces and **21** districts affected

20,038 people displaced in accommodation centres

231,589 people received regular food assistance

Highlights

- Since 14 March, WFP has assisted **1.8 million** people affected by **cyclone Idai** (Sofala, Manica, Tete and Zambezia provinces) and **cyclone Kenneth** (Cabo Delgado and Nampula provinces).
- For **cyclone Idai**, **1,614,872** people have been reached with food assistance.
- Since the beginning of the **cyclone Kenneth** response, WFP has assisted **231,589** people with regular food rations, and **55,626** people with immediate assistance at the onset, in the disaster-affected districts of Macomia, Ibo, Quissanga, Metuge, Meluco, Pemba (Cabo Delgado) and Erati and Memba (Nampula).

Overview

- The initial **Idai emergency response** phase is expected to be finalized by the end of June. Planning is ongoing for transition to the next response phase to help foster recovery and resilience of the most vulnerable affected populations who will continue to face food security challenges in the aftermath of the shock.
- In provinces affected by **cyclone Idai**, Fall Armyworm outbreaks have been reported in numerous locations, which could further impact crop damages and losses.
- A handover ceremony took place with a delegation from the embassy of Japan in Beira on 21 June, in presence of the Governor of Sofala, the Ambassador of Japan and the WFP Country Director, to acknowledge the recent contribution to the **Idai response**.
- A delegation from the Kuwait Red Crescent Society (KRCS) will conduct a mission in cyclone Idai affected areas from 24 to 26 June.
- On 12 June, the ECHO representative from the Nairobi regional office visited Matemo island, part of the Ibo district that was affected by **cyclone Kenneth** and observed food distribution activities. The donor representative also received briefings on the operation, coordination with other actors, challenges and way forward, including on the transition to the early recovery phase.
- Last week, the Governor of Cabo Delgado received a briefing on the post-emergency plans and pledged his support to the operation.
- As part of the Kenneth post-recovery preparatory process, a WFP workshop took place on 19-20 June in Pemba to present the early recovery phase. The meeting was well attended and open to current and potential cooperating partners, FAO and other UN agencies, and government officials.
- A story on Mozambican women affected by the cyclones, mainstreaming WFP's gender approach, has been published on [WFP Insight](#).
- TSF radio interviewed WFP about its cyclone Idai response and can be found [here](#) (only available in Portuguese).
- A documentary from ARTE TV showcasing WFP's response post cyclone Idai, was released and is available in French [here](#).

WFP Response

Cyclone Idai

- In collaboration with the authorities and humanitarian partners, WFP has assisted **1.6 million people** (1,614,872) with food assistance in Sofala, Manica, Zambezia, and Tete provinces. WFP is wrapping up the initial emergency response phase with the third and last food distribution round underway. Through the third distribution cycle, WFP has assisted 800,000 people so far (50% of the plan). A geographic prioritization exercise is ongoing to identify the most vulnerable areas for inclusion in the recovery phase. Once identified, WFP and partners will launch a community consultation exercise to identify community priorities and linkages with partner interventions.

- WFP continues to scale up **cash-based transfer** (CBT) programmes (commodity and value vouchers) aiming to reach 400,000 people. The third cycle of intervention is ongoing.

Since the start of value voucher distributions on 28 May in Dondo in Mafabisse Sede and Nhamatanda, a total of 17,256 families (86,280 people) have received a total value of 64,537,440 metical (USD 1,040,214), representing 59% of the plan. Value voucher distribution in Nhamatanda commenced on 12 June. WFP continues to work with the contracted retailers to enhance the shopping experience and reduce crowding in the shops. WFP and partners are finalizing the recovery phase planning including cash and voucher initiatives.

Affected Provinces	Number of beneficiaries reached
Sofala (Beira, Buzi, Caia, Cheringoma, Chibabava, Dondo, Gorongosa, Machanga, Maringue, Marromeu, Muanza, Nhamatanda)	1,015,245
Tete (Doa, Mutarara, Tete City)	133,680
Zambezia (Chinde, Derre, Gurue, Luabo, Lugela, Maganja da Costa, Milange, Molumbo Mopeia, Namacura, Nicoadala)	188,396
Manica (Gondola, Macate, Manica, Mossurize, Sussundenga, Vanduzi)	277,551
TOTAL	1,614,872

Cyclone Kenneth

- Since the beginning of the **cyclone Kenneth** response, WFP in collaboration with the authorities and humanitarian partners, has assisted **231,589 people**, representing 91.3% of the plan, in the disaster-affected districts of Ibo, Macomia (including Mucojo), Quissanga, Meluco, and Metuge in Cabo Delgado, and Erati and Memba in Nampula, through in-kind food distributions. In addition, WFP reached **55,626 people at the beginning of the response with assistance**, including High Energy Biscuits (HEB) and other food items.
- The emergency response phase continues with the first round of Cycle 1 food distributions being finalized in four districts and Cycle 1 completed in Macomia district.

Planning is ongoing for transition to the next phase with a focus on recovery and resilience of the most vulnerable populations in the affected districts.

Affected Provinces	Affected Districts in Cabo Delgado & Nampula	Number of beneficiaries reached
Cabo Delgado	Ibo	20,877
	Macomia	85,122
	Metuge	20,620
	Meluco	17,595
	Quissanga	14,885
	Macomia (Mucojo)	41,740
Nampula	Erati	20,000
	Memba	10,750
TOTAL		231,589

**Beneficiary figures reported are cumulative. This ensures that unique beneficiaries are counted, and not individuals reached multiple times. WFP is however reaching beneficiaries by cycles. Currently the response to cyclone Idai is under the third cycle, which is expected to be completed end of June.*

The response to cyclone Kenneth is still under the first cycle. For the Kenneth response, WFP also reached 55,626 people with an emergency 3-day ration of HEB. These people are not reported in this table where the regularly assisted beneficiaries are reported by cycle of general food distributions.

Nutrition Assistance – Idai Response

- WFP is supporting the Ministry of Health's Nutrition Rehabilitation Programme with the provision of ready-to-use supplementary food (RUSF) and Super Cereal (CSB+) to treat moderate acute malnutrition in 53,000 children under the age of five and acute malnutrition in 45,000 pregnant and lactating women (PLW), for 6 months.
- In the last week, WFP dispatched enough ready-to-use supplementary food (RUSF) and Super Cereal (CSB+) to treat moderate acute malnutrition in 1,440 children aged 6 – 59 months and acute malnutrition in 800 pregnant and lactating women for one month, in health facilities in the districts of Gorongosa (13 health facilities) and Maringue (9 health facilities), Sofala province.
- WFP, jointly with UNICEF, started to deliver training on Moderate and Severe Acute Malnutrition (MAM and SAM) outpatient treatment and Infant and Young Child Feeding (IYCF) practices. The training covers 42 health staff from Beira district and 36 from Dondo.
- WFP has started to train 115 health staff in Manica province, representing 93 health facilities that WFP is supporting for Moderate Acute Malnutrition treatment in the 12 districts of Manica Province.

Protection

- With the 24/7 inter-agency hotline (Linha Verde) now fully operational, WFP continues to monitor specific locations that have registered complaints. One of the main complaints is regarding exclusion from the distribution lists. Between 10-12 June, WFP carried out missions to several locations in Dondo district to assess these allegations and ensure implementation of identified corrective measures. An assessment mission also took place in Bebedo and Nhamatanda to assess allegations on sexual harassment. WFP in collaboration

with UNICEF is organizing a Protection from Sexual Exploitation and Abuse (PSEA) briefing with government district authorities.

- A protection mission will take part in the WFP workshop session on the next phase of the Kenneth response to advise on protection concerns and ways to mitigate protection risks during the recovery phase.

Assessments

- **The Integrated Phase Classification (IPC):** the IPC review was concluded in Maputo on 14 June and the outcome of the review will be presented to the government for endorsement. Results will be officially released upon validation from the government, expected in one week. The analysis on the food security and nutrition situation following cyclones Idai and Kenneth and subsequent flooding, carried out by the Technical Secretariat for Food Security (SETSAN) with the collaboration of WFP, UNICEF, FAO and FEWSNET, will inform future planning of the response.
- The International Organization for Migration (IOM) is expected to conduct the next round of site assessments (Displacement Tracking Matrix - DTM) the week of 17 June in the cyclone Idai affected districts, incorporating food security indicators to provide a better overview of the situation in resettlement camps, including concerning land accessibility.
- An assessment of retailers in support of a possible shift from in-kind food assistance to cash-based transfers (value vouchers) has been completed, results are expected to be shared before the end of June. Preliminary findings of the Rapid Assessment Mission indicate that value vouchers are a viable modality in Macomia district for the selected communities as retailers have enough stocks and beneficiaries are close to the market.

Funding Situation

WFP launched an appeal for USD 140 million for the **cyclone Idai** emergency response. As of 19 June, **the funding shortfall stands at USD 70.4 million**, based on confirmed and high probability contributions. Additional resources are also needed to commence the recovery phase as of June onwards.

WFP requires USD 30 million for the **cyclone Kenneth** emergency response. As of 19 June, the **funding shortfall stands at USD 14.9 million**. These funds are required to enable the provision of food and nutrition assistance to affected populations, as well as logistics and telecommunications support to 320,000 people, for three months.

Funding for the continuation of air operations in Cabo Delgado is urgently required.

Humanitarian Coordination

Food Security Cluster

- In response to **cyclone Idai**, **FSC partners had assisted 1,734,142 people** with food assistance and **158,627** with

livelihoods assistance, as of 17 June, in the provinces of Sofala, Tete, Zambezia and Manica. Food security cluster partners are preparing for the transition to recovery, projecting for agricultural livelihood activities. Coordination meetings on livelihood agricultural activities are held to ensure that existing gaps are covered.

- In response to **cyclone Kenneth**, **FSC partners had assisted 565,890 people** with food assistance as of 16 June, in the provinces of Cabo Delgado and Nampula. As part of the livelihood response scale-up in Cabo Delgado and Nampula provinces, 2,700 people received livelihoods support in Metuge and Mueda while horticulture kits are being distributed to 2,000 families in Metuge, Mueda, Quissanga districts.
- The FSC is engaging with partners operating under the Kenneth response to define an early recovery plan, including agricultural support for the seasonal window of opportunity, in coordination with local authorities and line ministries.
- A FSC dynamic dashboard was developed and can be found [here](#). This interactive tool provides a user-friendly way to navigate through reported activities from FSC partners in Mozambique (Idai and Kenneth response), along with an integrated operational map.

Logistics Cluster

Cyclone Idai

- Logistics Cluster partners reported that there are no existing logistics gaps in Beira, and that the private sector is functioning with regards to storage and road transport needs.
- Following consultations with partners, the Logistics Cluster will cease common logistics services in Beira on 30 June.
- The Logistics Cluster has supported 75 organizations throughout the cyclone Idai response.

Cyclone Kenneth

- The Logistics Cluster continues to facilitate access to common storage spaces in Macomia, Mucojo and Ibo.
- The Mi-8 made available to the humanitarian community by WFP, as lead agency of the Logistics Cluster, performed its last rotations on Friday 14 June and left the operation on the following day.
- From 10 to 14 June, the Logistics Cluster facilitated the air transport of 21.2 MT of relief items to Mucojo on behalf of ICRC and WHO.
- This service continues to be necessary due to access constraints. While DFID funding will enable new mobilization, additional funding is needed to cover at least 3-4 weeks.
- Overall, the Logistics Cluster has supported 49 organisations during the Kenneth response through coordination and information management services, and by facilitating transport and storage services.

Emergency Telecommunications Cluster

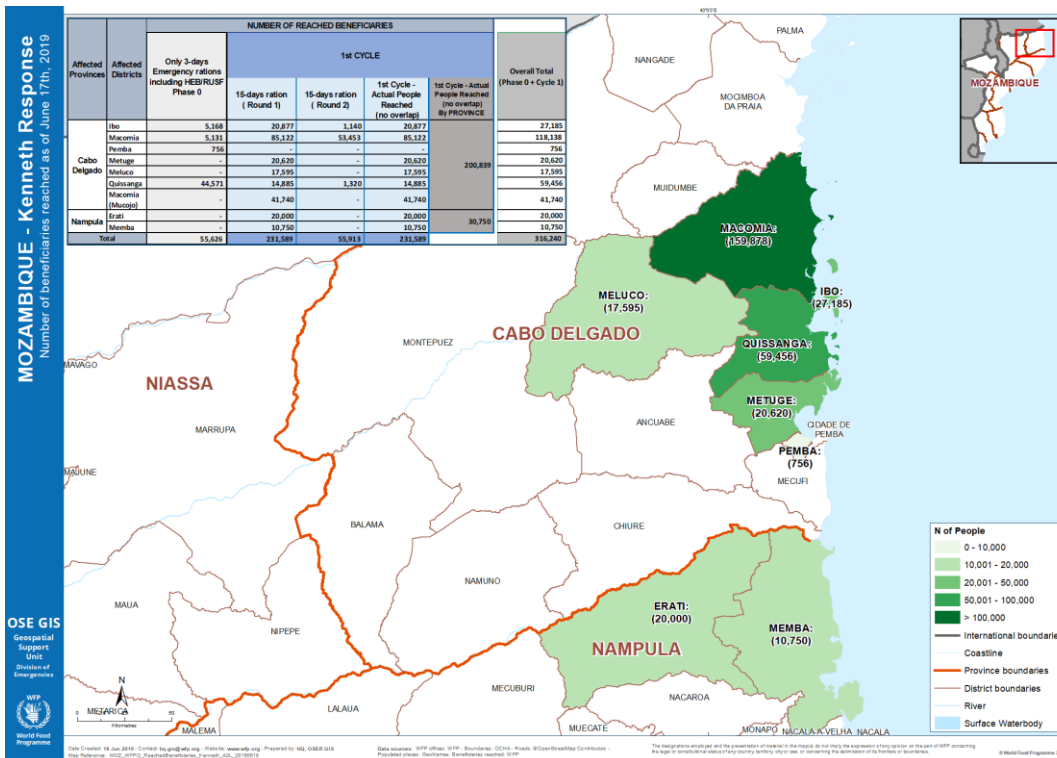
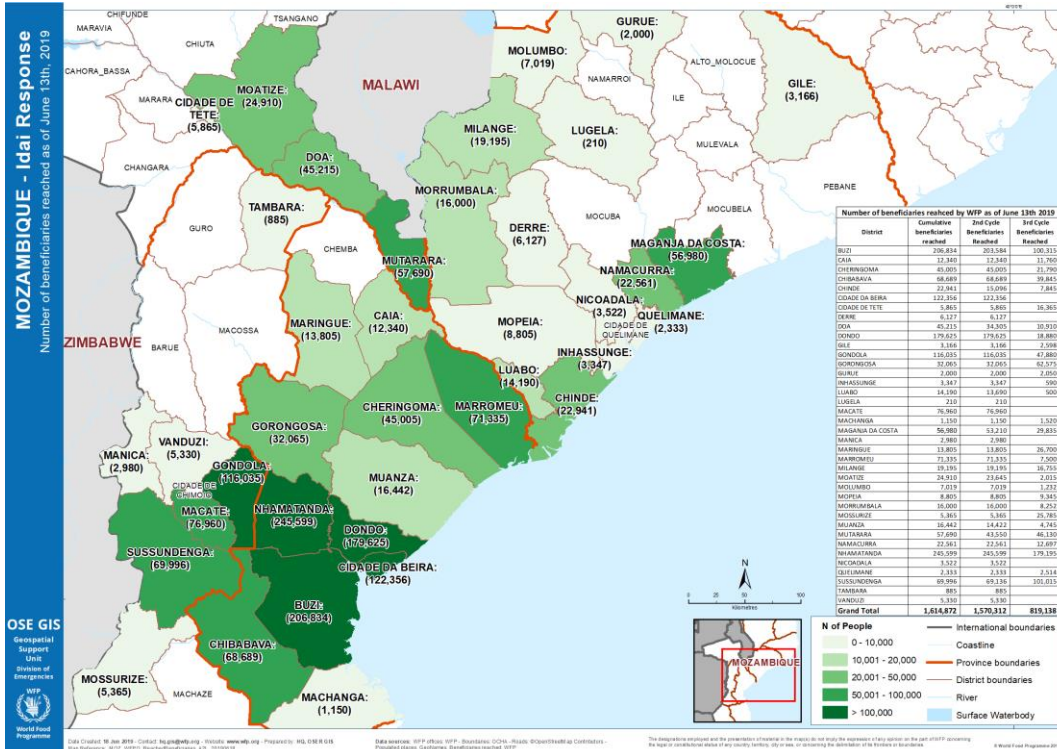
- The ETC plans to phase out all internet connectivity services in the cyclone Kenneth response by 12 July as local providers and services are restored. The ETC has

advised partners that no new internet connections will be planned after 24 June.

- The ETC conducted a mission to Ibo island to check on the connectivity services there and to discontinue connectivity services in 2 locations as they are no longer required.
- The ETC plans to install the Security Operations Centre

(SOC) for VHF and HF radio in Macomia this week. The SOC will ensure the safety and security of humanitarians in and around Macomia.

- The ETC continues to programme VHF and HF radios for various organizations and is loaning satellite phones to organisations for up to one week when requested.



Maps indicating the number of people reached by WFP, in collaboration with partners, in provinces affected by cyclones Idai and Kenneth and floods (as of 17 June).

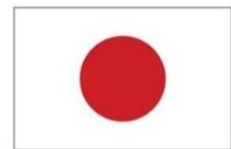
Emergency response to tropical cyclones Idai and Kenneth has been made possible thanks to generous contributions received so far from (in alphabetical order):



European Union
Civil Protection and
Humanitarian Aid



MINISTRY FOR FOREIGN
AFFAIRS OF ICELAND



From
the People of Japan



spanish aid



USAID
FROM THE AMERICAN PEOPLE



UNITED ARAB EMIRATES
MINISTRY OF INTERNATIONAL
COOPERATION AND DEVELOPMENT