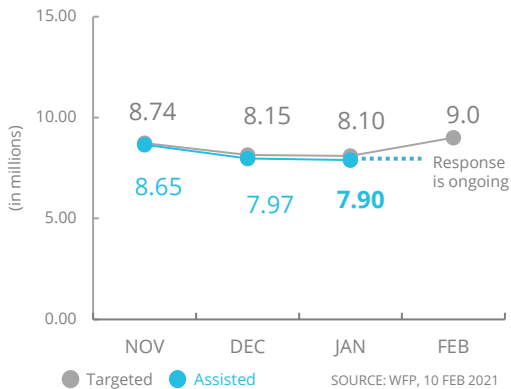
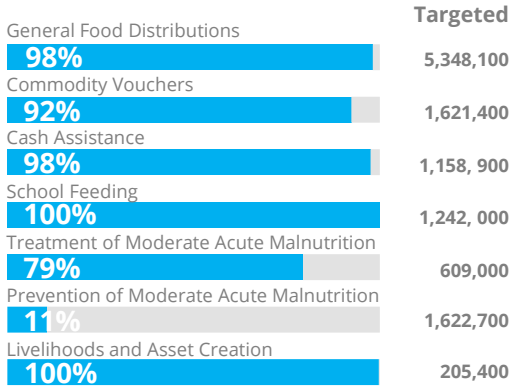


# Yemen

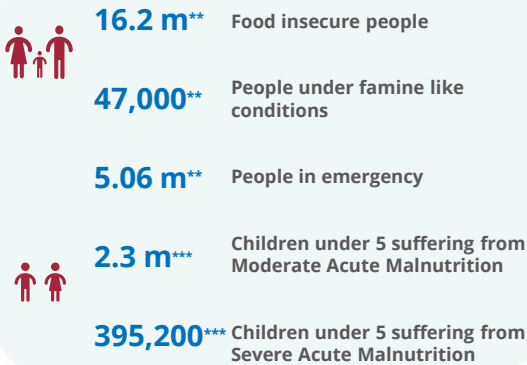
## PEOPLE ASSISTED\* Yemen Interim Country Strategic Plan (ICSP)



## OPERATIONAL PROFILE By Activity (January)



## PEOPLE IN NEED



## FUNDING

Yemen Interim Country Strategic Plan (ICSP)

March - August 2021

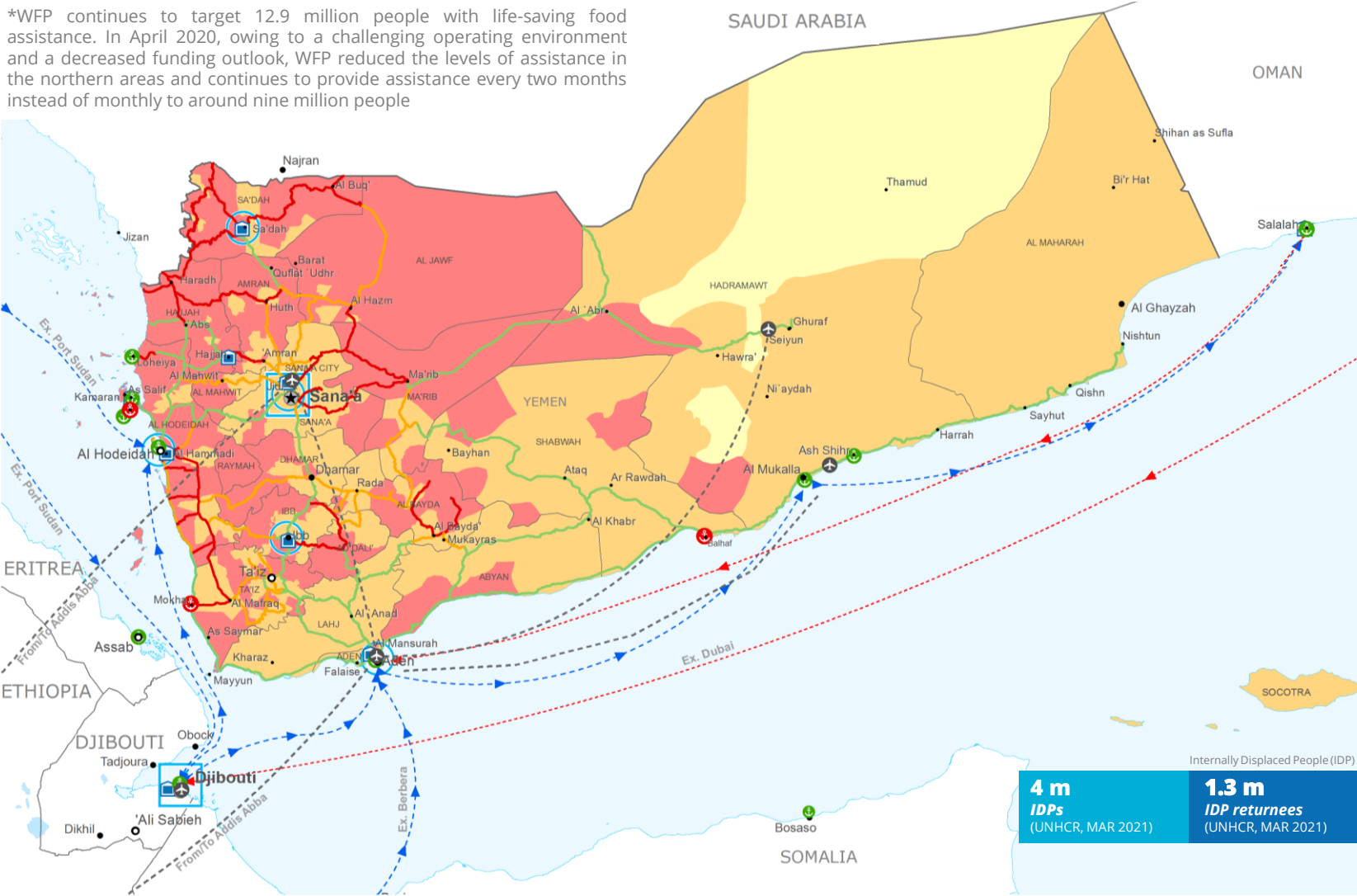
**US\$479.5 m**

Net funding requirements

**2020 LEVEL 3 RESPONSE**  
Requirements: US\$1.9 bn  
Funded: US\$880.4 m



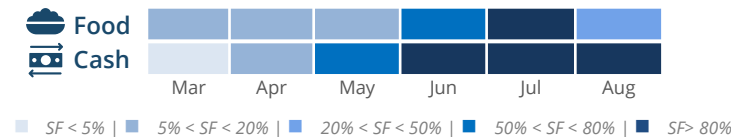
\*WFP continues to target 12.9 million people with life-saving food assistance. In April 2020, owing to a challenging operating environment and a decreased funding outlook, WFP reduced the levels of assistance in the northern areas and continues to provide assistance every two months instead of monthly to around nine million people



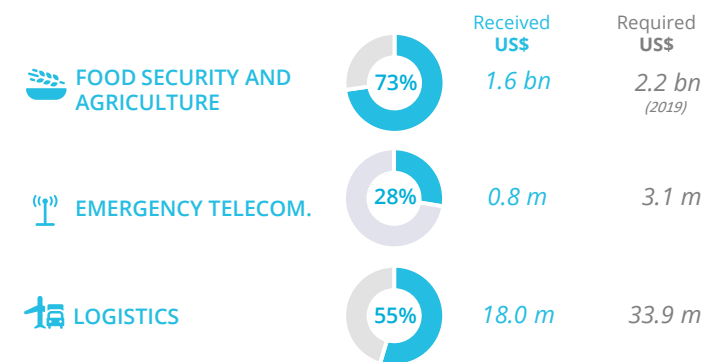
## AVERAGE MONTHLY FUNDING REQUIREMENTS (2021) (6 Months - US\$)



### EXPECTED SHORTFALLS (SF)



## WFP-LED AND SUPPORTED CLUSTERS



## UN HUMANITARIAN AIR SERVICES (UNHAS)



**UNHAS Operating Flights in March 2021**

Origin	Destination	Origin	Destination
Addis Abba	Aden	Addis Abba	Addis Abba
Aden	Seiyun	Aden	Aden
Addis Abba	Sana'a	Addis Abba	Addis Abba
Aden	Sana'a	Aden	Aden
Amman	Sana'a	Amman	Amman

**WFP LEVEL 3 EMERGENCY SINCE 03 JULY 2015**

SITUATION REPORT and COUNTRY BRIEF

Sources: WFP, UNGIWG, GAUL, GLSCS, OCHA, UNHCR.  
The designations employed and the presentation of material in the map(s) do not imply the expression of any opinion on the part of WFP concerning the legal or constitutional status of any country, territory, city or sea, or concerning the delimitation of its frontiers or boundaries. © World Food Programme 2020.

**Integrated Phase Classification Projection (Jan - Jun 2021)**

- No data
- Minimal (Phase 1)
- Stressed (Phase 2)
- Crisis (Phase 3)
- Emergency (Phase 4)
- Famine (Phase 5)

**Country Office** (Square), **Field Office** (Triangle), **Warehouse** (Square with X)

**Port Closed** (Red circle), **Port Operational** (Green circle), **Port with Restricted Access** (Yellow circle)

**UNHAS Connection** (Star), **UNHAS Route** (Dashed line), **Supply Route Open** (Blue arrow), **Supply Route Closed** (Red arrow)

**Road Open** (Green line), **Road with Restricted Access** (Yellow line), **Road Closed** (Red line)

**IDP Camp** (Green triangle), **Refugee Camp** (Red triangle), **Refugee Center** (Red house)

**National Capital** (Star), **Major Town** (Circle), **Intermediate Town** (Dot), **Small Town** (Dot)

**International Boundary** (Thick grey line), **Governorate Boundary** (Thin grey line)

Produced by the WFP Operations Centre (OPSCEN) jointly with Country Office and Regional Bureau Cairo. This dashboard is based on best available information at the time of production. Future updates may vary as new information becomes available.