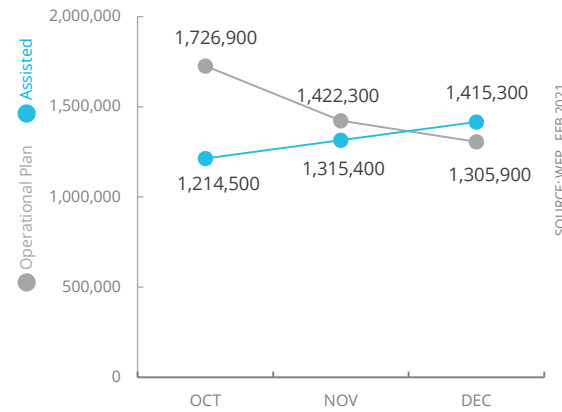


Democratic Republic of Congo

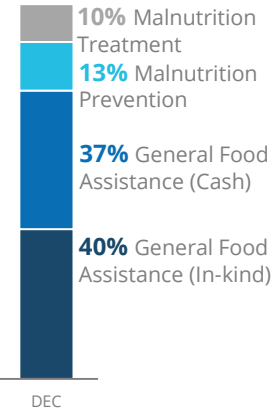
PEOPLE ASSISTED

DR Congo Interim Country Strategic Plan

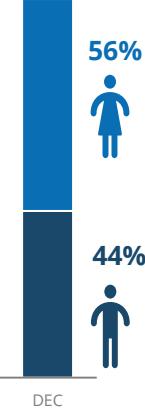


OPERATIONAL PROFILE

By Activity

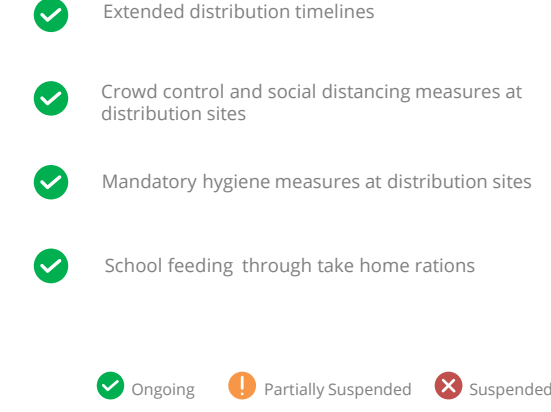


By Gender



COVID-19 OPERATIONAL IMPACT

Status WFP Response adjusted



FUNDING

DR Congo Country Strategic Plan (CSP)
February 2021 – July 2021

Net funding requirements
US\$161.3m

2021 LEVEL 3 RESPONSE
Requirements US\$662.5m

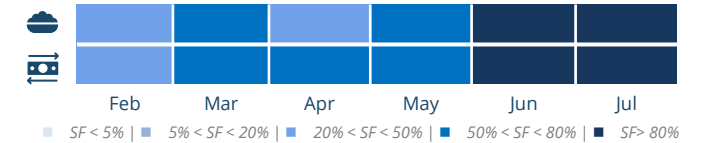
SOURCE: WFP, FEB 2021

SOURCE: WFP, FEB 2021

AVERAGE MONTHLY FUNDING REQUIREMENTS (US\$)

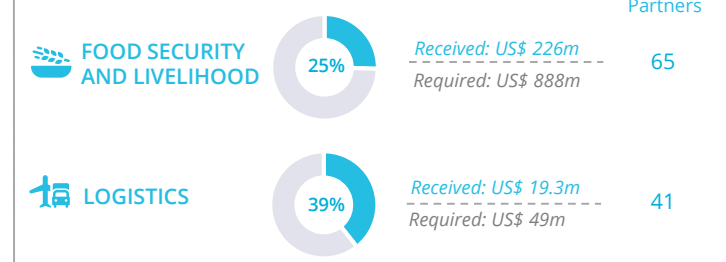
Food: 39.1m **Cash: 22.1m**

EXPECTED SHORTFALLS



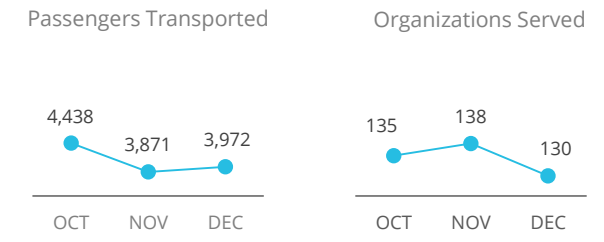
SOURCE: WFP, 02 FEB 2021

WFP-LED AND SUPPORTED CLUSTERS



SOURCE: WFP, FEB 2021

UN HUMANITARIAN AIR SERVICES (UNHAS)

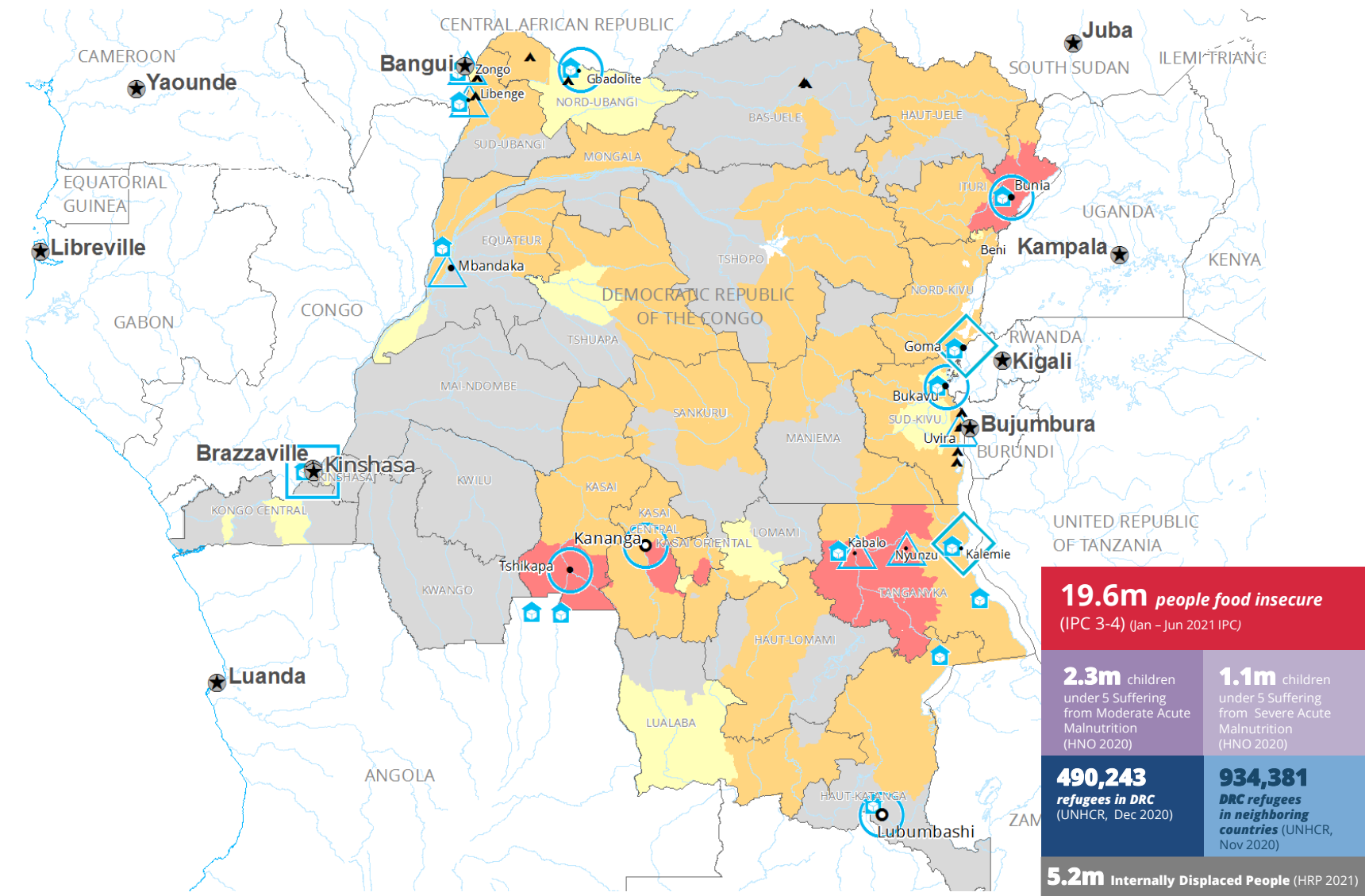


SOURCE: WFP, FEB 2021

WFP LEVEL 3 EMERGENCY

SITUATION REPORT and COUNTRY BRIEF

Gender and Age Marker **3**



Sources: WFP, UNGIWI, GAUL, GLCSC, OCHA, UNHCR, IPC.
The designations employed and the presentation of material in the map(s) do not imply the expression of any opinion on the part of WFP concerning the legal or constitutional status of any country, territory, city or sea, or concerning the delimitation of its frontiers or boundaries.
© World Food Programme 2020.