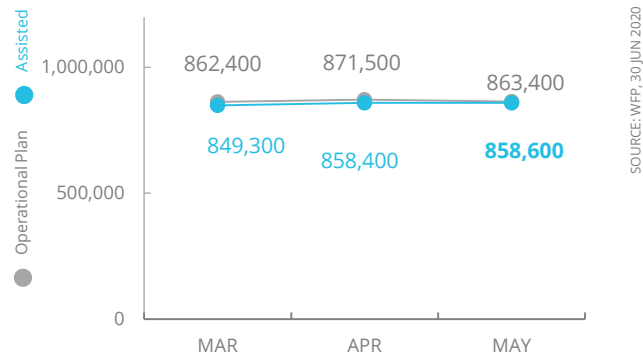


# Bangladesh

## PEOPLE ASSISTED Bangladesh Rohingya Refugee Response



## OPERATIONAL PROFILE (May)

### Refugee Communities

General Food Assistance: In-kind / E-Voucher

144,400 / 714,200

Nutrition Refugees TSFP CU5 / PLW\*

12,800 / 800

Nutrition Refugees BSFP CU5 / PLW\*\*

155,600 / 21,300

### Host Communities

Nutrition Host Communities TSFP CU5 / PLW\*

2,600 / 1,600

\* Targeted Supplementary Feeding for Children under 5 / Pregnant and Lactating Women

\*\* Blanket Supplementary Feeding for Children under 5 / Pregnant and Lactating Women

SOURCE: WFP, 30 JUN 2020

## COVID-19 OPERATIONAL IMPACT

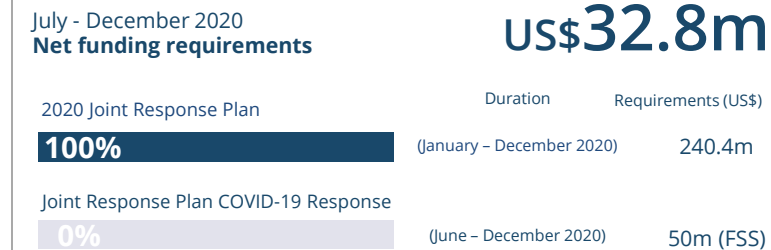
Status	WFP Response	Beneficiaries targeted
✓	COVID-19 emergency support to the Bangladeshi host community in Cox's Bazar	105,000 households*
✓	School Feeding in the Host Community	130,000

✓ Ongoing 
 ! Partially Suspended 
 ✗ Suspended

\* (incl. 24,000 beneficiaries from the Livelihoods programme)

SOURCE: WFP, 02 JUN 2020

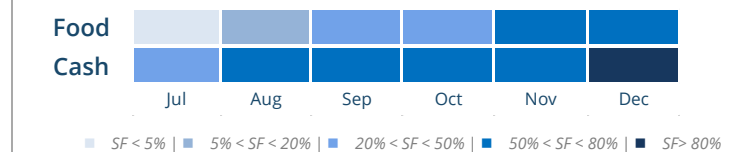
## FUNDING Cox's Bazar Level 2 Emergency Response:



## AVERAGE MONTHLY FUNDING REQUIREMENTS (US\$)

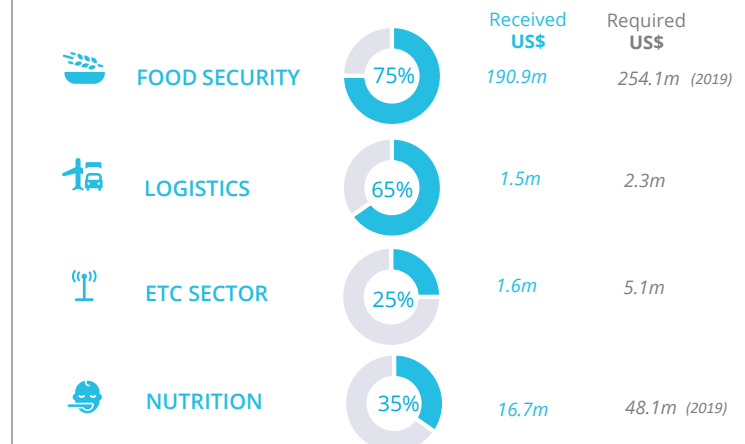


## EXPECTED SHORTFALLS (SF)

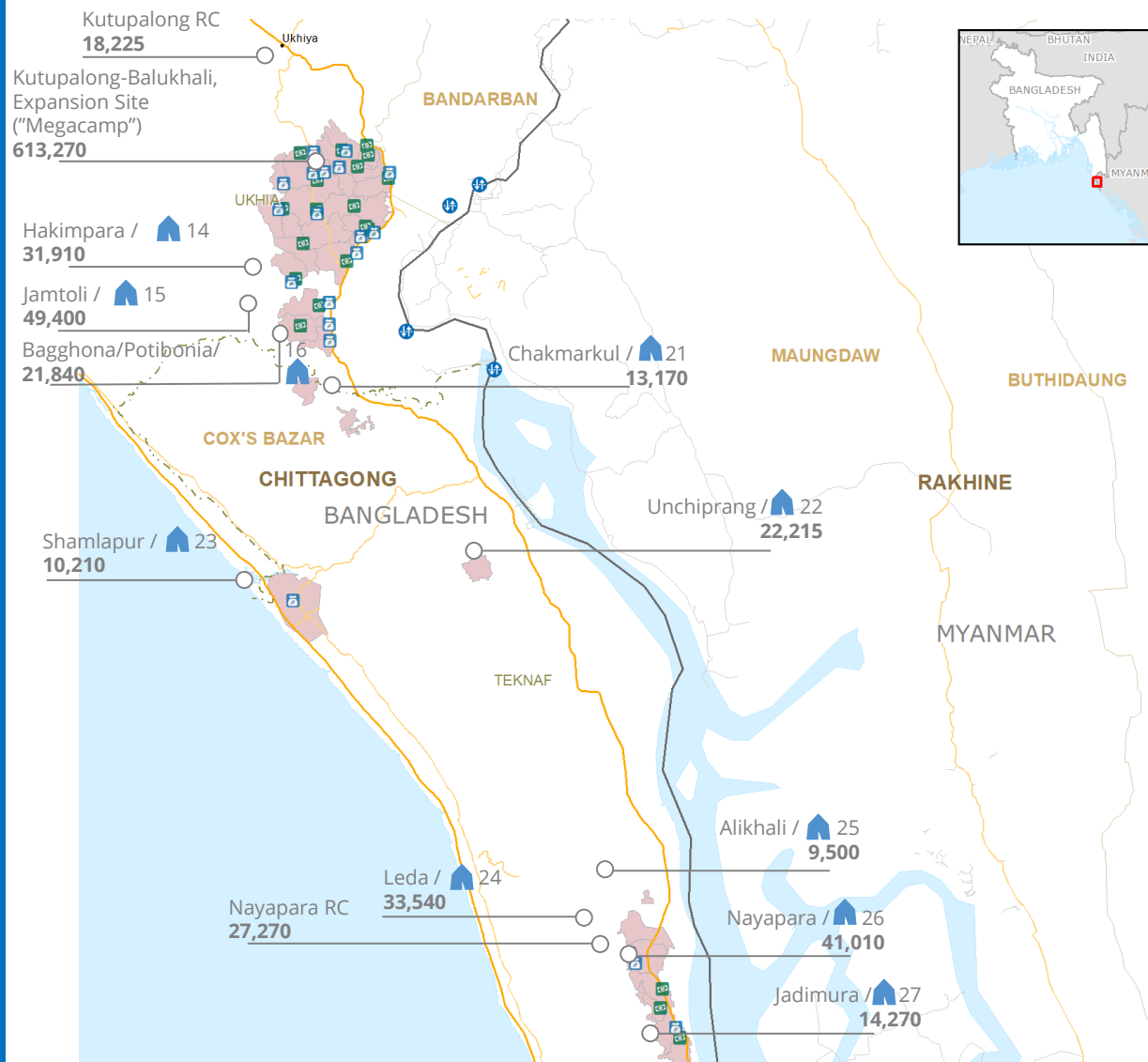


SOURCE: WFP, 07 MAY 2020

## WFP-LED AND SUPPORTED SECTORS



SOURCE: WFP/FITS, 30 JUN 2020



- Food Distribution Point
- WFP Voucher Outlet
- Number of camps
- Refugees in Host Communities
- # Numbers indicate camp population figures
- Border Crossing Point
- Primary
- Secondary
- Tertiary
- Track/Trail
- International boundary
- State boundary
- Township Boundary
- Union Boundary

\* Targeted Supplementary Feeding for Children under 5 / Pregnant and Lactating Women

\*\* Blanket Supplementary Feeding for Children under 5 / Pregnant and Lactating Women