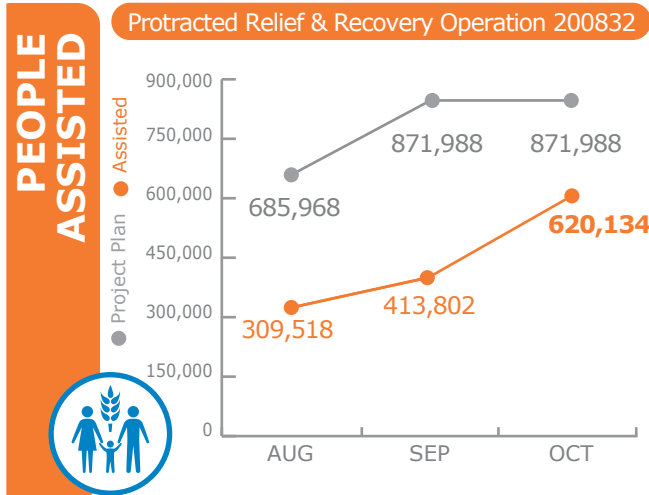


WFP SAYS NO to GENDER BASED VIOLENCE



FUNDING

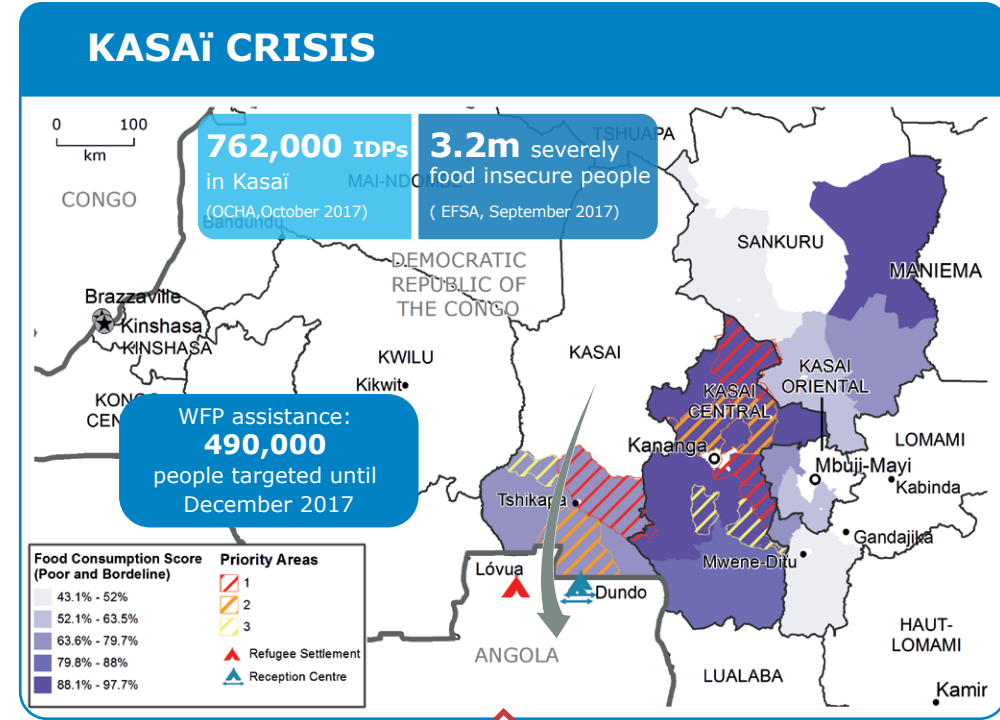
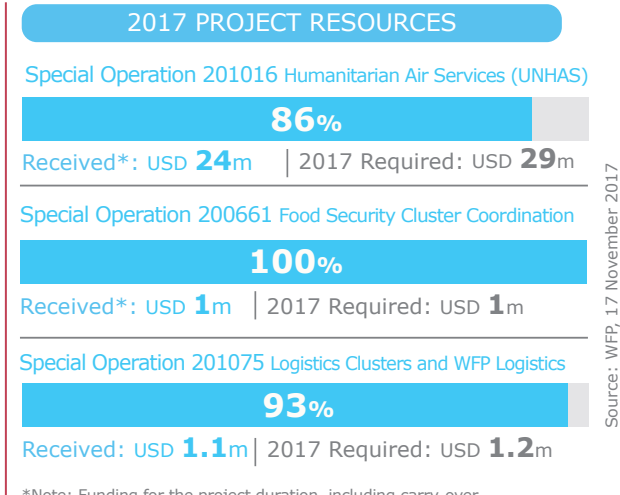
DRC Protracted Relief & Recovery Operation 200832

November 2017 - April 2018

US\$44m Funding Shortfall*

2017 operations 65% funded

*Does not include the funding requirements for Kasai
Source: WFP, 13 November 2017



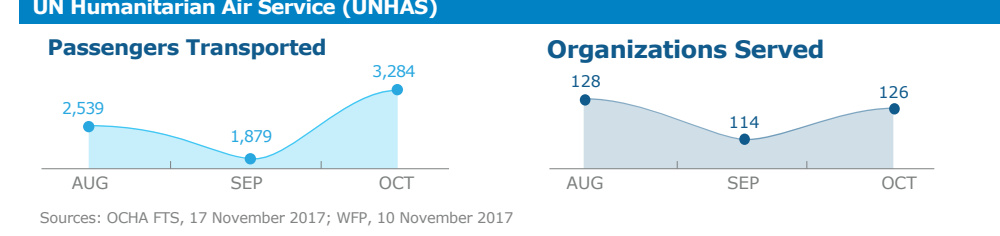
WFP Emergency Assistance in Kasai

Funding shortfall US\$91.9m (Nov 2017- Apr 2018)

2017 operations for Kasai 48% funded

Total beneficiaries reached under EMOP 201092: 205,000 as of 28 November 2017

Source: PGG, 29 November 2017



WFP LEVEL 3 EMERGENCY

SINCE 06 OCTOBER 2017

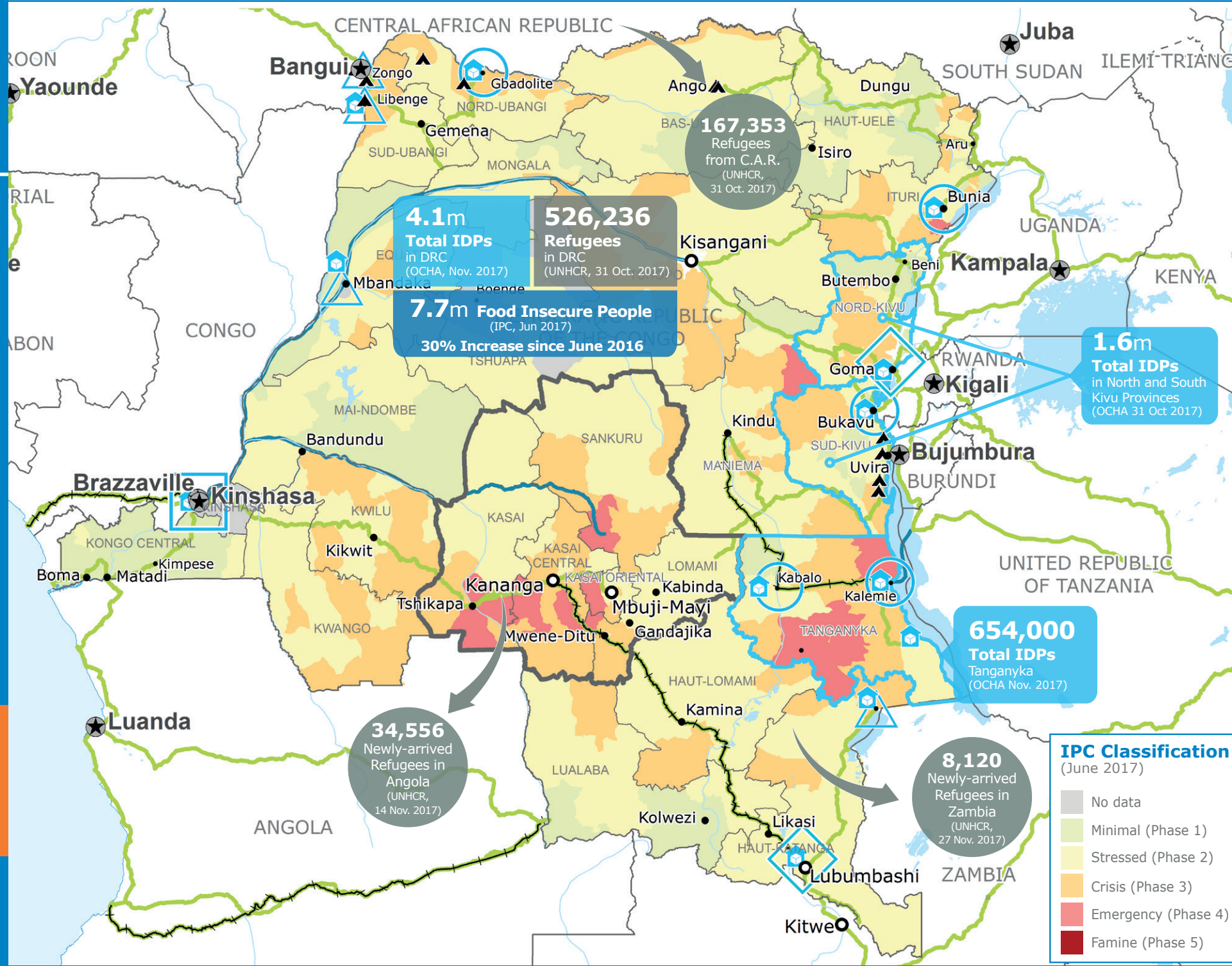
For more information, see the **SITUATION REPORT** and **COUNTRY BRIEF** www.wfp.org/countries/congo-democratic-republic

2A PRRO 200832

<http://documents.wfp.org/stellent/groups/public/documents/ep/WFP284303.pdf>

Produced by the WFP **Operations Centre (OPSCEN)** jointly with Country Office and Regional Bureau Johannesburg

This dashboard is based on best available information at the time of production. Future updates may vary as new information becomes available.



Legend:

- Country Office
- Field Office
- Road Supply Route
- National Capital
- International Boundary
- Area Office
- Warehouse
- Railway Supply Route
- Major Town
- Province boundary
- Sub Office
- Refugee Camp
- Water Supply Route
- Intermediate Town
- River
- Small town
- Surface Waterbody

Sources: WFP, UNGIWG, GAUL, GLCSC, OCHA, UNHCR, IPC
The designations employed and the presentation of material in the map(s) do not imply the expression of any opinion on the part of WFP concerning the legal or constitutional status of any country, territory, city or sea, or concerning the delimitation of its frontiers or boundaries. © World Food Programme 2017