



World Food Programme

SAVING
LIVES
CHANGING
LIVES



April 2020

WFP/Jessica Lawson

Regional Syrian Refugee Crisis Overview

In Numbers

Net Funding Requirements:
(June - November 2020)

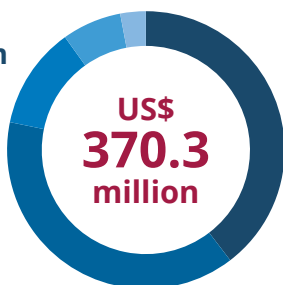
Lebanon: US\$147.4 m

Jordan: US\$143.5 m

Egypt: US\$42.7 m

Iraq: US\$25.1 m

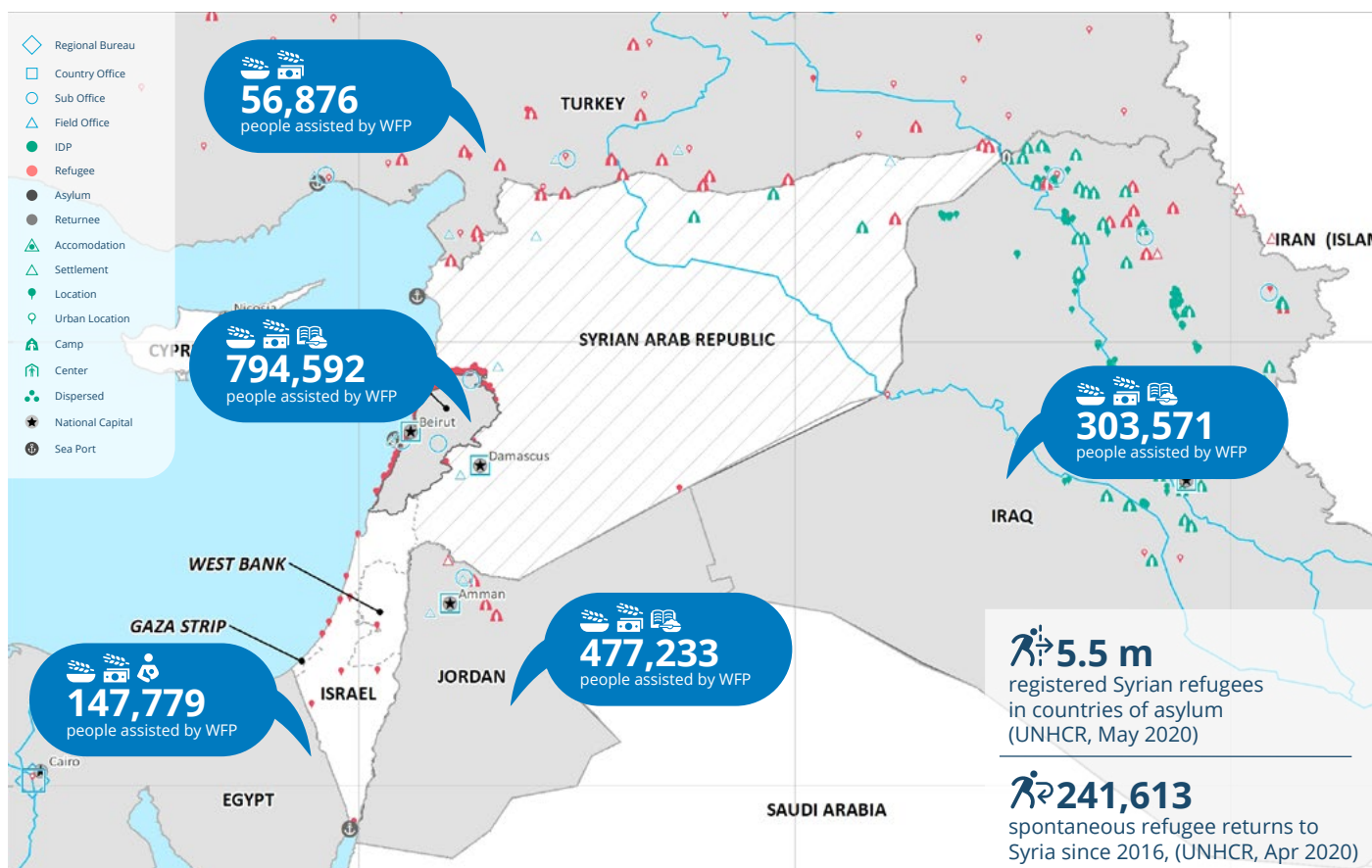
Turkey: US\$11.6 m



Highlights

- **1.8 million*** Syrian refugees, non-Syrian refugees and host community assisted by WFP in April 2020.
- With the spread of COVID-19, the provision of food assistance to affected populations continued but at a slower pace due to limitations on banking hours, movement, staffing, and COVID-19 related health protocols and regulations.

*The reduction in number of assisted refugees compared to the previous month is due to the handover of the ESSN programme in Turkey.



Unconditional Resource Transfers Asset Creation and Livelihoods Malnutrition Prevention School Feeding

These icons represent all WFP activities planned and implemented in each country in response to the Syrian refugee crisis. Figures above may include host community members and non-Syrian refugees. UNHCR locations are partially represented at this scale. **Map updated as of May 2020**



Situation Updates

Government and regional authorities' travel restrictions and curfews continued to hamper operations, distributions and delivery times. Food price increase has been a growing concern across the region. WFP continued to monitor market functionality and food access to understand possible implications on people's food security status.



WFP Response

In addition to managing existing operations, WFP has been carefully monitoring the developments and assessing the new needs in order to scale up operations and to capture additional vulnerable people as a result of this pandemic.



Unconditional Resource Transfers



Egypt: In response to growing needs due to COVID-19, WFP extended general food assistance (GFA) to an additional 20,000 vulnerable refugees identified in partnership with UNHCR. In collaboration with the Ministry of Manpower, GFA was also provided to 40,512 casual labour workers, adding to a total of about 147,779 refugees, asylum seekers and casual labour workers in April.



Jordan: WFP assisted 480,000 refugees with general food assistance through cash-based transfers. To allow refugees access to food commodities before the beginning of Ramadan, WFP reloaded May cash assistance for refugees on 20 April (earlier than originally planned). A staggered approach was adapted in camps, using blockchain technology, to limit overcrowding at contracted shops.



Lebanon: WFP assisted 113,230 vulnerable Lebanese, 646,290 Syrian refugees, 27,122 Palestinian refugees from Syria and 7,950 refugees of other nationalities, through cash-based transfer modalities. WFP adjusted the transfer value of the food assistance component from LBP40,500 to LBP 50,000 in order to align it with the average retail price of the food component of Survival Minimum Expenditure Basket (SMEB) observed in Lebanon in the last three months and to allow beneficiaries to fully meet their food needs.



Iraq: In response to the impact of COVID-19, WFP has worked with UNHCR and partners to identify and include an additional 35,000 Syrian refugees and 10,000 IDPs in relief food assistance, and to continue to reach a further 25-30 percent of IDPs who were at the borderline to self-sufficiency before the pandemic.



Turkey: WFP continues its support to 55,777 refugees in six camps with a monthly e-voucher payment of TRY 100 (USD 15) per person. In April, WFP also provided a one-off top-up of TRY 1,000 (USD 150) per household in line with the government transfer amount to vulnerable Turkish households.



Asset Creation and Livelihoods



Turkey: Online vocational training for the Kitchen of Hope project continued to air on a dedicated YouTube channel, following the established curriculum. The classes are taught by well-known Turkish chefs, with Arabic translation provided live. A total of 177 participants received their monthly entitlement of TRY 750 (USD 115) and 50 TL (USD 7.6) top-up for internet data credit.



School Feeding

Schools closures across the region had a significant impact on refugee children who were receiving school meals but WFP is quickly adapting its operations shifting to alternative modalities such as take-home rations or unconditional cash transfers.

WFP assistance amid COVID-19

WFP Lebanon and its partners are working to ensure that all beneficiaries who redeem their assistance at WFP-contracted shops do so safely. Products, shelves, counters and trolleys are regularly disinfected as shop owners follow hygiene measures to ensure everyone returns home safely with their needed assistance.

Photo: WFP and its partners have prioritised implementing all safety and hygiene measures to ensure the safety of staff and beneficiaries amidst the COVID-19 outbreak. WFP/ Qobayat Field Office



Donors



Contacts

WFP Regional Bureau Cairo
Telephone: +202 2528 1730;
Fax: +202 2528 1735
Email: RBC_OIM@wfp.org