



The Bahamas – Hurricane Dorian Situation Report #01

04 September 2019

In Numbers

76,278 estimated affected population

Abaco and Grand Bahama islands
directly affected

**39,000 planned people to be assisted
by WFP** in coordination with the
Caribbean Disaster Emergency
Management Agency (CDEMA)

Situation Update

- Category 5 Hurricane Dorian has so far killed 7 people and caused severe damage to over 13,000 houses. Initial reports estimate that 76,278 people are directly affected.
- The Government pre-emptively requested humanitarian assistance on 29 August 2019.

WFP Response

- WFP's emergency operation is launched on a 'no regrets' basis to ensure operational readiness to provide adequate and timely support to the National Emergency Management Agency (NEMA) and other national authorities, together with the CDEMA.
- The various activities will only be called upon based on identified needs and if requested by the Government and/or CDEMA. The overall operation aims to strengthen existing national and regional humanitarian response mechanisms and systems.
- WFP is planning an initial emergency response that includes direct assistance for 39,000 shock affected people over an initial period of 3 months.
- WFP's staff, embedded within national and regional mechanisms, will support rapid assessments in the Logistics, Emergency Telecommunications, and Food Security sectors.

Highlights

- WFP has four staff in-country to support the Government-led response. Additional staff are being deployed.
- WFP has drafted a 3-month Limited Emergency Operation (LEO) for USD 5.4 million to reach 39,000 beneficiaries. Needs may increase as assessments continue to come in.
- CDEMA and WFP to establish logistics hubs and telecommunications to facilitate the response.



Food and Nutrition Assistance

- The Government is mounting sector-based assessments. Some pre-deployed teams are already on the ground conducting damage assessments where possible.
- The Rapid Needs Assessment Teams (RNAT) - led by CDEMA and which WFP staff are deployed under – are planned to start on 4 September once the 'all clear' is given by the Government to travel to the affected areas. The RNAT role is to carry out a 3-day assessment with one team in each main affected island to provide key recommendations to guide further responses. These assessments will provide more detailed information regarding the extent of the damage and support requirements on both islands.
- Total WFP food requirements stand at 85 mt – focused primarily on Ready to Eat Meals for initial relief. Beyond the initial period, WFP's LE can support potential in-kind food or Cash Based Transfer (CBT) assistance should further international assistance be required.

Supply Chain

- The procurement of the 8 Metric Tons (MT) of Meals, Ready to Eat (MREs) available from a supplier in Miami is underway. WFP is looking for additional MREs.

Sectors and Common Services

Food Security Sector

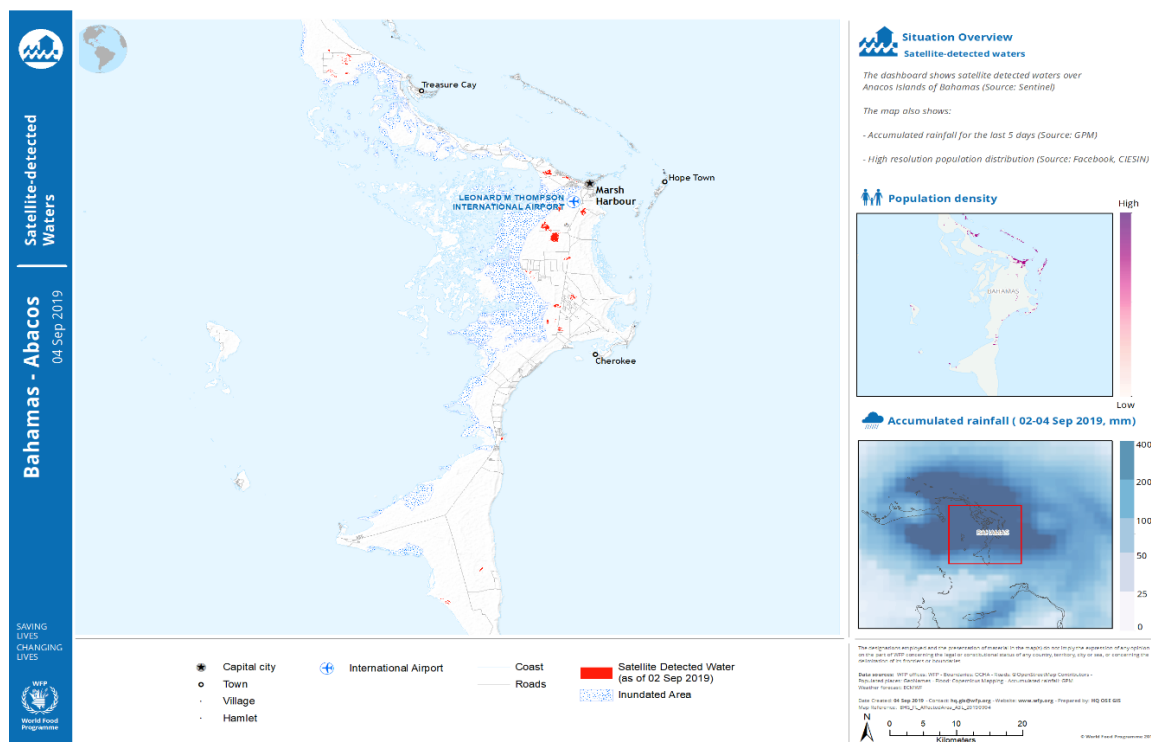
- WFP has two staff with VAM and IM/Coordination expertise on the ground

Logistics Sector

- CDEMA and NEMA have requested WFP to support the establishment of logistics hubs (2 kits of 4 Mobile Storage Units, 2 generators, 3 prefabricated offices and lighting) under the leadership of CDEMA.

Emergency Telecommunications Sector

- One WFP ETC Staff is currently in Bahamas.
- CDEMA and NEMA have requested WFP to provide ETC data connectivity equipment (VSAT kits) to ensure connectivity at the National Emergency Operations Center and the Emergency Operations Centers on the affected islands.
- A team of ETC specialist is currently in Barbados for a workshop with CDEMA and various emergency telecommunications experts from throughout the Caribbean. The team is on standby and ready to deploy if required.
- The Rapid Needs Assessment Team (RNAT) will deploy with 2 drones to capture high-resolution aerial imagery for situation monitoring and mapping. WFP is providing technical support to set up the drone teams and coordination mechanisms flights, data capture and processing.



Contacts

Regional Director: Miguel Barreto (Miguel.barreto@wfp.org)

Emergency Coordinator: Regis Chapman (regis.chapman@wfp.org)

Information Management Officer: Carolina Barreto (carolina.barreto@wfp.org)